

MATERIALS AND FINISHES:

SMA JACK STR RP

BODY, JAM NUT BRASS
PLATED GOLD

CONTACT BRASS
PLATED GOLD

INSULATOR TEFLON

LOCK WASHER SPCC
PLATED GOLD

CMP CONNECTOR

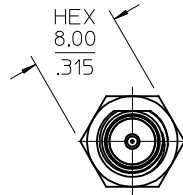
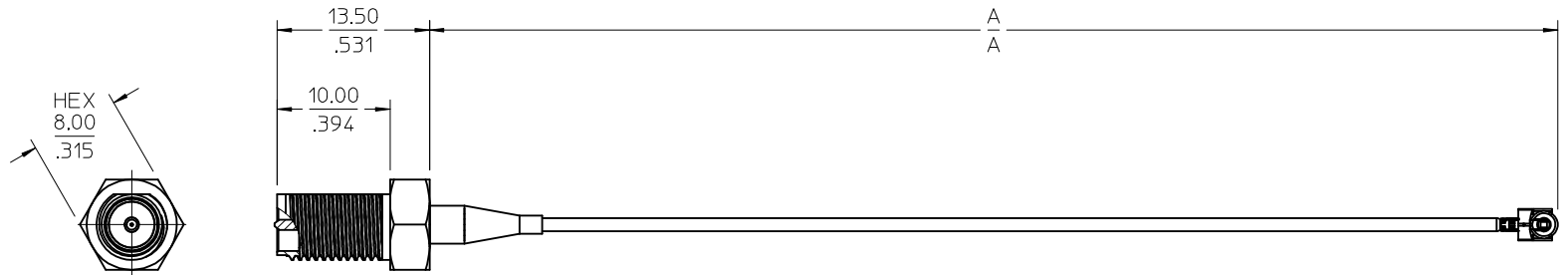
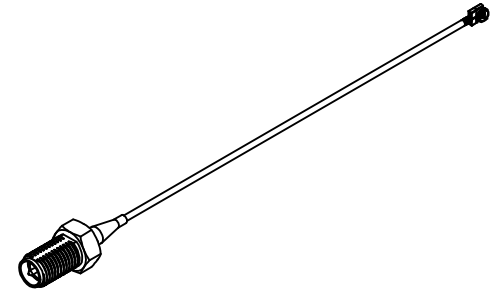
BODY PHOSPHOR BRONZE
PLATED GOLD

PIN PHOSPHOR BRONZE
PLATED GOLD

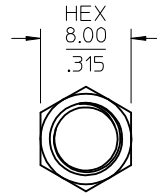
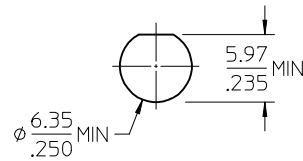
INSULATOR PBT

CABLE DIA. 1.13
COLOR GRAY
OR EQUIVALENT

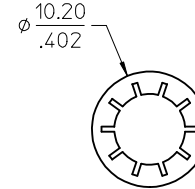
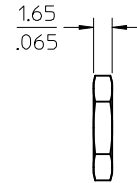
SHRINK TUBE VERSAFIT
OR EQUIVALENT



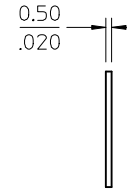
RECOMMENDED PANEL CUTOUT
MAX PANEL THICKNESS 2.01/.079



JAM NUT



LOCK WASHER



89762-5582	5.118±.197	130.00±5.00
89762-5581	3.937±.197	100.00±5.00
89762-5580	5.905±.197	150.00±5.00
PART NO.	IN	MM
DIM	A	

CHG: ADDING 5582 PDR: 15051925 IEC NO: URF2015-0618 DRW: SH001 CHKD: APPR: YCHENG 2015/05/05 2015/05/21	QUALITY SYMBOLS ▽=0 ▽=0 ▽=0	GENERAL TOLERANCES (UNLESS SPECIFIED) mm INCH 4 PLACES ± --- ± --- 3 PLACES ± --- ± --- 2 PLACES ± --- ± --- 1 PLACE ± --- ± --- 0 PLACE ± --- ± ---	DIMENSION STYLE MM/IN DRAWN BY DATE RYEH 2014/02/12 CHECKED BY DATE KERRIE 2014/02/12 APPROVED BY DATE YCHENG 2015/04/13	SCALE 3:1 DESIGN UNITS METRIC THIRD ANGLE PROJECTION	TITLE CA SMA JACK STR RP TO CMP W/DIA 1.13 CABLE CA-SMAJ/CMP molex	MATERIAL NO. SEE TABLE SIZE C	DOCUMENT NO. SD-89762-558	SHEET NO. 1 OF 1
		ANGULAR ± 2 °		DRAFT WHERE APPLICABLE MUST REMAIN WITHIN DIMENSIONS		THIS DRAWING CONTAINS INFORMATION THAT IS PROPRIETARY TO MOLEX INCORPORATED AND SHOULD NOT BE USED WITHOUT WRITTEN PERMISSION		
		A1		A		A		
		A		A		A		

MATERIALS AND FINISHES:

SMA JACK STR RP

BODY, JAM NUT BRASS
PLATED GOLD

CONTACT BRASS
PLATED GOLD

INSULATOR TEFLON

LOCK WASHER SPCC
PLATED GOLD

CMP CONNECTOR

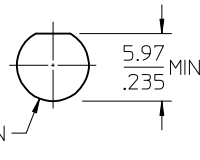
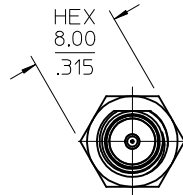
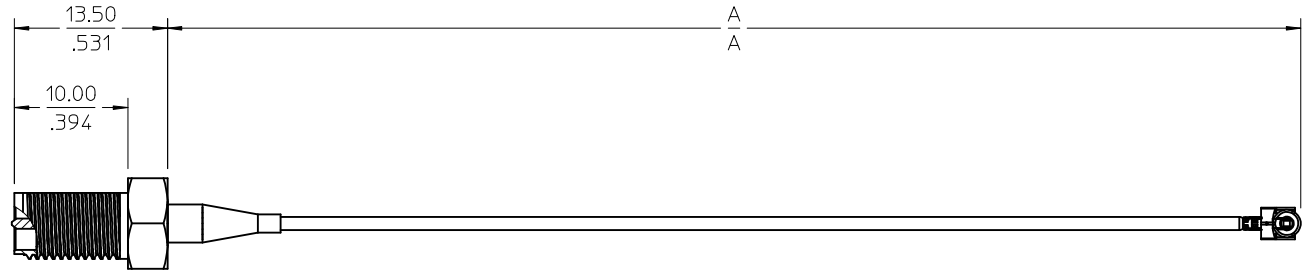
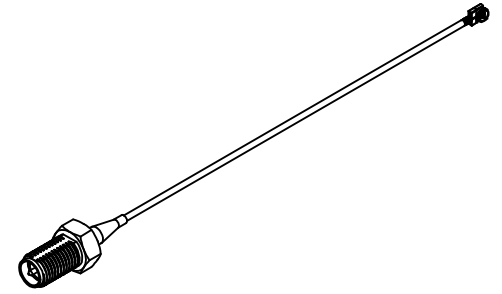
BODY PHOSPHOR BRONZE
PLATED GOLD

PIN PHOSPHOR BRONZE
PLATED GOLD

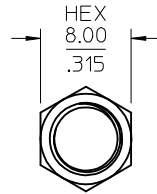
INSULATOR PBT

CABLE DIA. 1.13
COLOR GRAY
OR EQUIVALENT

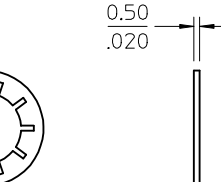
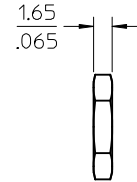
SHRINK TUBE VERSAFIT
OR EQUIVALENT



RECOMMENDED PANEL CUTOUT
MAX PANEL THICKNESS 2.01/.079



JAM NUT



LOCK WASHER

89762-5582	5.118±.197	130.00±5.00
89762-5581	3.937±.197	100.00±5.00
89762-5580	5.905±.197	150.00±5.00
PART NO.	IN	MM
DIM	A	

CHG: ADDING 5582 PDR: 15051925 IEC NO: URF2015-0618 DRWNS: SH001 CHKD: APPR: YCHENG 2015/05/05 2015/05/21	QUALITY SYMBOLS ▽=0 ▽=0 ▽=0	GENERAL TOLERANCES (UNLESS SPECIFIED) mm INCH 4 PLACES ± --- ± --- 3 PLACES ± --- ± --- 2 PLACES ± --- ± --- 1 PLACE ± --- ± --- 0 PLACE ± --- ± ---	DIMENSION STYLE MM/IN DRAWN BY DATE RYEH 2014/02/12 CHECKED BY DATE KERRIE 2014/02/12 APPROVED BY DATE YCHENG 2015/04/13	SCALE 3:1 DESIGN UNITS METRIC THIRD ANGLE PROJECTION	TITLE CA SMA JACK STR RP TO CMP W/DIA 1.13 CABLE CA-SMAJ/CMP molex	MATERIAL NO. SEE TABLE SIZE C	DOCUMENT NO. SD-89762-558 SHEET NO. 1 OF 1
		ANGULAR ± 2 °		DRAFT WHERE APPLICABLE MUST REMAIN WITHIN DIMENSIONS		THIS DRAWING CONTAINS INFORMATION THAT IS PROPRIETARY TO MOLEX INCORPORATED AND SHOULD NOT BE USED WITHOUT WRITTEN PERMISSION	
		A1		A		A	
		A1		A		A	