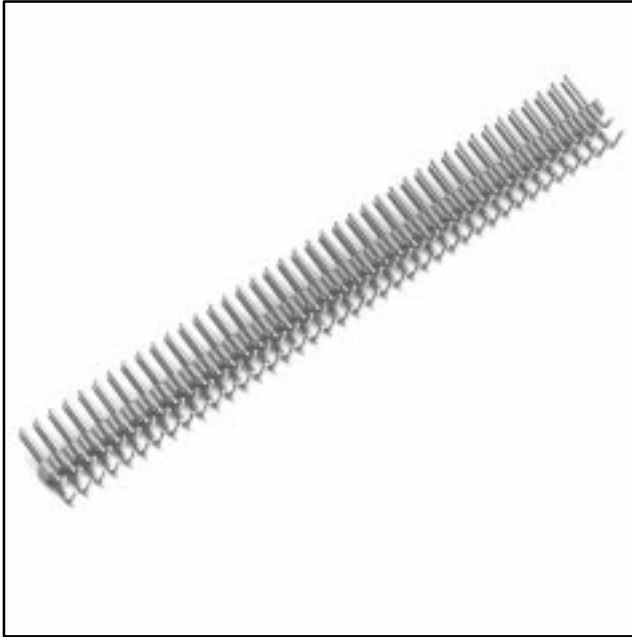


.100" and .100" × .100" Pin Strip Header

Straight & Right Angle, Solder Tail

2400 Series



- One and two row versions
- Straight and right angle versions
- Break to length for faster delivery, lower inventory costs, and faster prototyping
- Tapered tip does not cut the socket wipe during insertion, reducing operational failures and repairs
- Solder standoffs facilitate wash of flux residue, reducing costly rework
- Board pin retention feature available

Date Modified: December 28, 1999

TS-0767-03
Sheet 1 of 3

14

Physical

Insulation

Material: Glass Filled Polyester (PBT)
Flammability: UL 94V-0
Color: Gray

Contact

Material: Copper Alloy
Plating
Underplate: 100 μ " [2.54 μ m] Nickel — QQ-N-290, Class 2
Wiping Area: 30 μ " [0.76 μ m] Gold — MIL-G-45204, Type II, Grade C
Solder Tails: 200 μ " [5.08 μ m] 90/10 Tin Lead — MIL-P-81728

Electrical

Current Rating: 3 A
Insulation Resistance: $> 1 \times 10^9 \Omega$ at 500 Vdc
Withstanding Voltage: 1000 Vrms at Sea Level

Environmental

Temperature Rating: -55°C to $+105^\circ\text{C}$

UL File No.: E68080

3M Interconnect Solutions Division

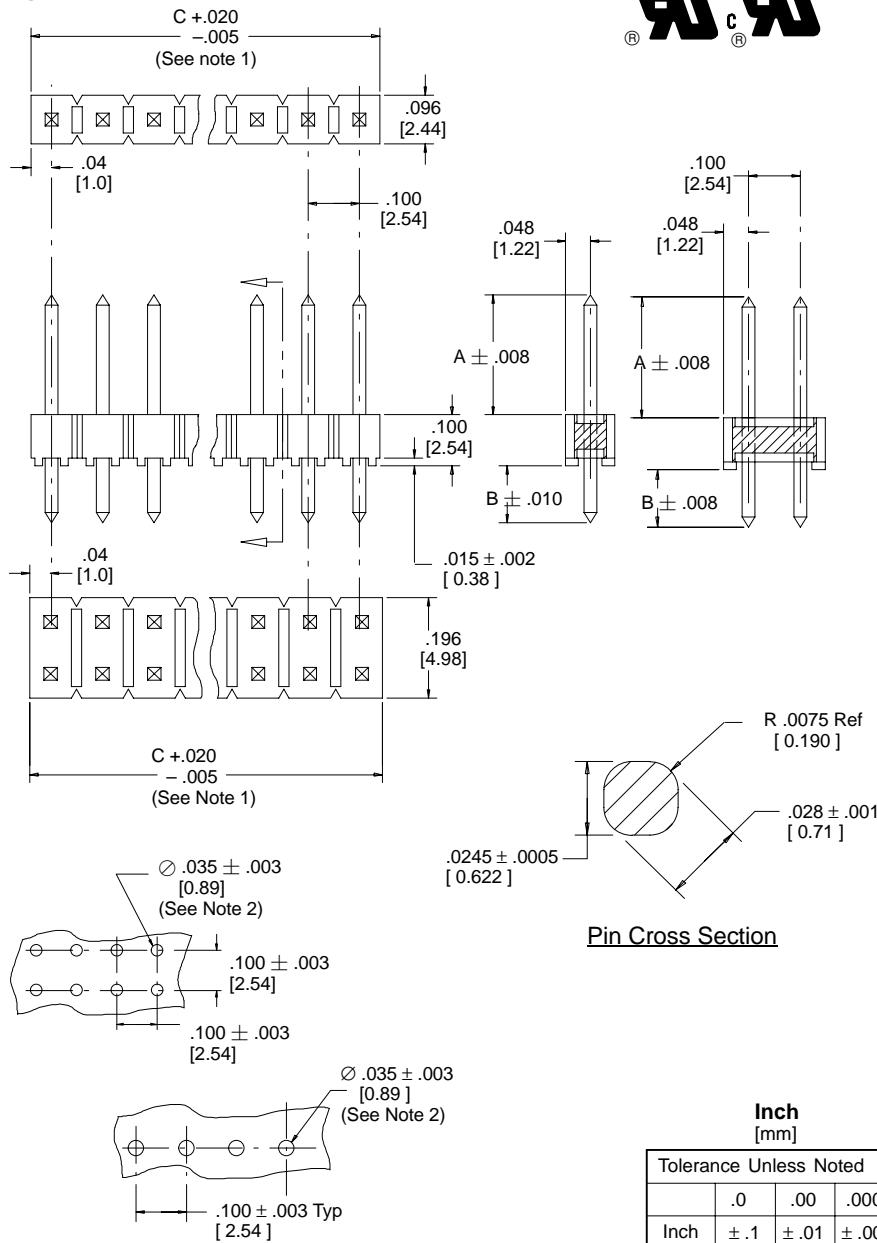
6801 River Place Blvd.
Austin, TX 78726-9000

For technical, sales or ordering information call
800-225-5373

.100" and .100" × .100" Pin Strip Header Straight & Right Angle, Solder Tail

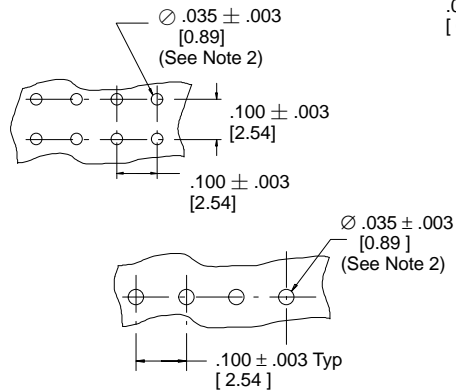
2400 Series

Straight



Pin Cross Section

Recommended Mounting Hole Pattern



Inch [mm]			
Tolerance Unless Noted			
	.0	.00	.000
Inch	$\pm .1$	$\pm .01$	$\pm .005$

[] Dimensions for Reference Only

Pin Quantity		Dimension C
One Row	Two Row	
01		0.09 [2.3]
02	04	0.19 [4.8]
03	06	0.29 [7.4]
04	08	0.39 [9.9]
05	10	0.49 [12.4]
06	12	0.59 [15.0]
07	14	0.69 [17.5]
08	16	0.79 [20.1]
09	18	0.89 [22.6]
10	20	0.99 [25.1]
11	22	1.09 [27.7]
12	24	1.19 [30.2]
13	26	1.29 [32.8]
14	28	1.39 [35.3]
15	30	1.49 [37.8]
16	32	1.59 [40.4]
17	34	1.69 [42.9]
18	36	1.79 [45.5]
19	38	1.89 [48.0]
20	40	1.99 [50.5]
21	42	2.09 [53.1]
22	44	2.19 [55.6]
23	46	2.29 [58.2]
24	48	2.39 [60.7]
25	50	2.49 [63.2]
26	52	2.59 [65.8]
27	54	2.69 [68.3]
28	56	2.79 [70.9]
29	58	2.89 [73.4]
30	60	2.99 [75.9]
31	62	3.09 [78.5]
32	64	3.19 [81.0]
33	66	3.29 [83.6]
34	68	3.39 [86.1]
35	70	3.49 [88.6]
36	72	3.59 [91.2]
37	74	3.69 [93.7]
38	76	3.79 [96.3]
39	78	3.89 [98.8]
40	80	3.98 [101.1]

Notes:

- This part is molded in the 40 contact quantity version. Parts that require fewer contacts are broken to length. Dimension "C" is measured from a "Molded End" to the "Center of the Break Point" beyond the desired quantity. On Pin Strips, which have break points on both ends, "C" = $.100'' \times$ contact quantity per row.
- The recommended PCB hole size for the kinked tail positions on the $.112''$ solder tail connector is $.035'' \pm .002$. Refer to TS-0971 for the number of tails kinked and the position kinked.

Ordering Information

24XX-6XXXXTB

Pin Quantity:
(See Table)
One Row (01-40)
Two Row (04-80)

Pin Length
(Dim A)
1 = .235"
2 = .318"

Tail (Dim B)

One Row
12=.112" Solder Tails
13=.155" Solder Tails
32=.112" Kinked Solder Tails

Two Row
22=.112" Solder Tails
23=.155" Solder Tails
72=.112" Kinked Solder Tails

TS-0767-03
Sheet 2 of 3

3M Interconnect Solutions Division

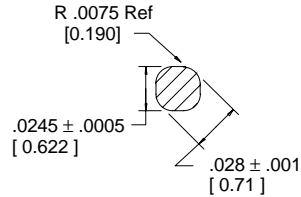
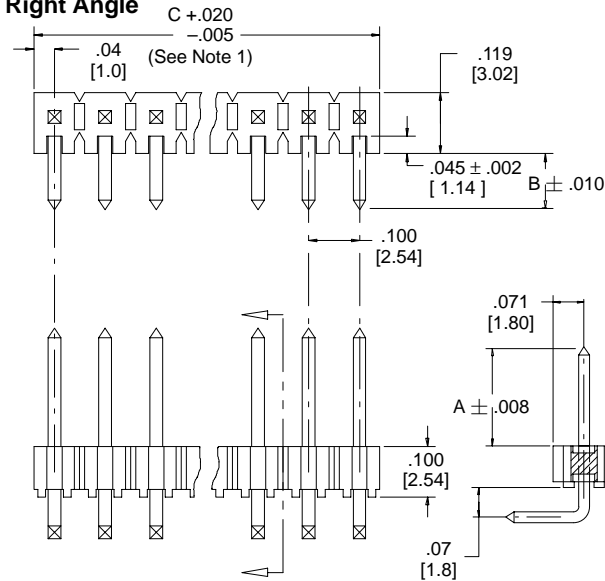
6801 River Place Blvd.
Austin, TX 78726-9000

For technical, sales or ordering information call
800-225-5373

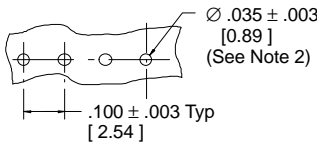
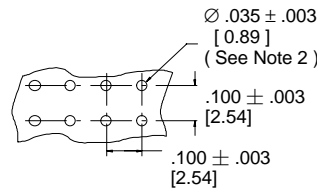
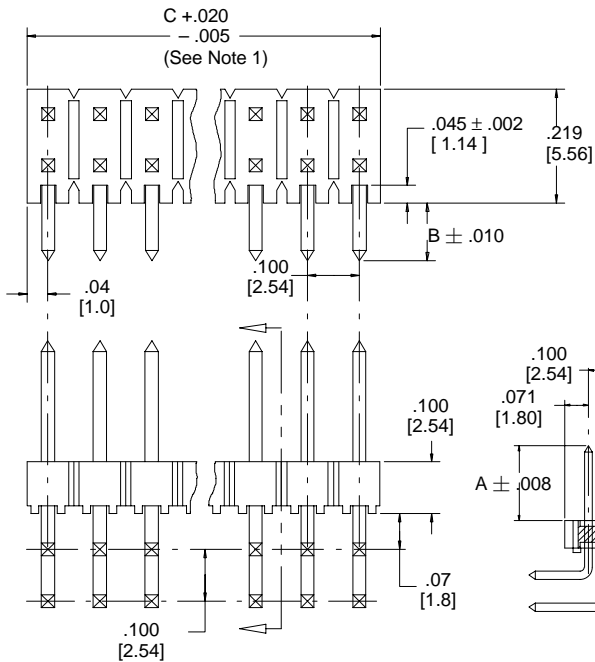
.100" and .100" × .100" Pin Strip Header Straight & Right Angle, Solder Tail

2400 Series

Right Angle



Pin Cross Section



Recommended Mounting Hole Pattern

Notes:

1. This part is molded in the 40 contact quantity version. Parts that require fewer contacts are broken to length. Dimension "C" is measured from a "Molded End" to the "Center of the Break Point" beyond the desired quantity. On Pin Strips, which have break points on both ends, "C" = .100" x contact quantity per row.
2. The recommended PCB hole size for the kinked tail positions on the .112" solder tail connector is .035" ± .002. Refer to ts-0971 for the number of tails kinked and the position kinked.

Inch
[mm]

Tolerance Unless Noted			
	.0	.00	.000
Inch	± .1	± .01	± .005

[] Dimensions for Reference only

Pin Quantity		Dimension C
One Row	Two Row	
01	02	0.09 [2.3]
02	04	0.19 [4.8]
03	06	0.29 [7.4]
04	08	0.39 [9.9]
05	10	0.49 [12.4]
06	12	0.59 [15.0]
07	14	0.69 [17.5]
08	16	0.79 [20.1]
09	18	0.89 [22.6]
10	20	0.99 [25.1]
11	22	1.09 [27.7]
12	24	1.19 [30.2]
13	26	1.29 [32.8]
14	28	1.39 [35.3]
15	30	1.49 [37.8]
16	32	1.59 [40.4]
17	34	1.69 [42.9]
18	36	1.79 [45.5]
19	38	1.89 [48.0]
20	40	1.99 [50.5]
21	42	2.09 [53.1]
22	44	2.19 [55.6]
23	46	2.29 [58.2]
24	48	2.39 [60.7]
25	50	2.49 [63.2]
26	52	2.59 [65.8]
27	54	2.69 [68.3]
28	56	2.79 [70.9]
29	58	2.89 [73.4]
30	60	2.99 [75.9]
31	62	3.09 [78.5]
32	64	3.19 [81.0]
33	66	3.29 [83.6]
34	68	3.39 [86.1]
35	70	3.49 [88.6]
36	72	3.59 [91.2]
37	74	3.69 [93.7]
38	76	3.79 [96.3]
39	78	3.89 [98.8]
40	80	3.98 [101.1]

Ordering Information

24XX-5XXXTB

Pin Quantity:
(See Table)
One Row (01-40)
Two Row (02-80)

Pin Length
(Dim A)
1 = .235"
2 = .318"

Tail (Dim B)
One Row
12=.112" Solder Tails
13=.155" Solder Tails
32=.112" Kinked Solder Tails

Two Row
22=.112" Solder Tails
23=.155" Solder Tails
72=.112" Kinked Solder Tails

TS-0767-03
Sheet 3 of 3

3M Interconnect Solutions Division

6801 River Place Blvd.
Austin, TX 78726-9000

For technical, sales or ordering information call
800-225-5373