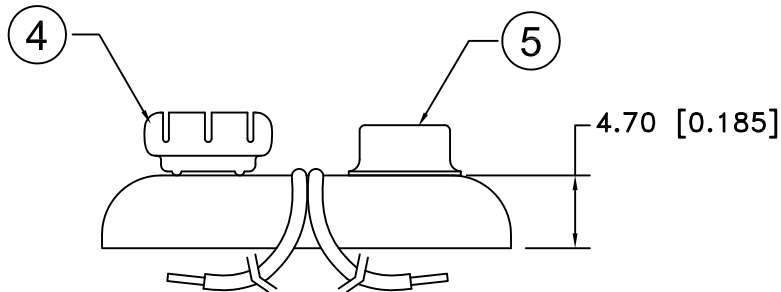
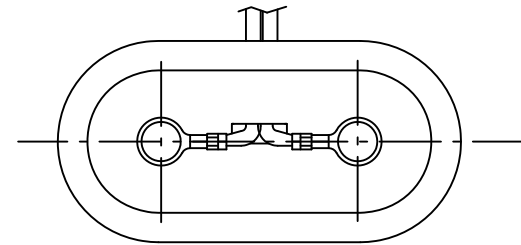



Date	SYM	REVISION RECORD	AUTH	DR.	CK.
5/26/07	A	ADDED "ROHS COMPLIANT"	T.B.	B.S.	
10/03/14	B	UPDATED TO ROHS 2 COMPLIANT	T.B.	B.S.	



NOTES:

1. T STYLE 2 PCS. MOLDED CASE CONSTRUCTION WITH CRIMP CONNECTIONS. CRIMP ON WIRE INSULATION AND ON WIRE PROVIDES STRAIN RELIEF THAT STANDARD SOLDERED SNAPS DO NOT HAVE.
2. ROHS 2 COMPLIANT

NO.	PART NAME	MATERIAL	QTY.	Tolerance (Except as noted)	
				decimal	Fractional
1	MOLDED CASE	2 PCS., POLYETHYLENE, WHITE WITH BLUE INSERT	1	 Memory Protection Devices, Inc 200 Broad Hollow Road, Farmingdale, New York 11735	Title 9 VOLT BATTERY SNAP-T STYLE-12" WIRE LEADS, MOLDED CASE Date 10/03/14 Drawing Number BS12T-MC
2	BLACK WIRE(-)	24 AWG OR 26 AWG, UL-1007, CSA TR-64, 300V, 80°C	1		
3	RED WIRE (+)	24 AWG OR 26 AWG, UL-1007, CSA TR-64, 300V, 80°C	1		
4	FEMALE SNAP	BRASS, NICKLE PLATED	1		
5	MALE SNAP	BRASS NICKLE PLATED	1		
				Angular	± 3°

Scale
 Drawn By **B.S.**
 Approved By **T.B.**