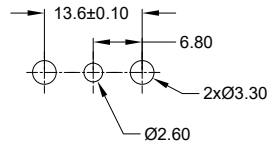
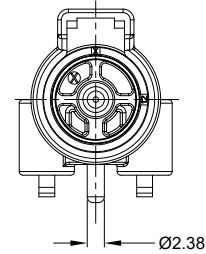


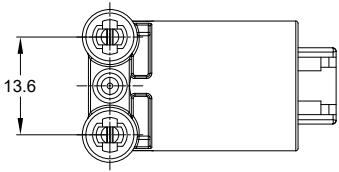
REVISIONS					
REV	ECO	DESCRIPTION	DATE	BY	APPR
A1	-	RELEASED DRAWING	MAY-10-21	VITO	TOMMY



RECOMMENDED PCB LAYOUT

NOTES: UNLESS OTHERWISE SPECIFIED

- MATERIAL:  
HOUSING: THERMOPLASTIC; COLOR:BLACK  
CONTACT: COPPER ALLOY  
SEAL:SILICONE RUBBER
- MODIFICATIONS :RIGHT ANGLE PCB MOUNT ,SNAP FIT
- SPECIFICATIONS:
  - CURRENT RATING: 25 AMPS
  - OPERATING TEMPERATURE: -55°C TO +125°C
  - DIELECTRIC WITHSTANDING VOLTAGE: LESS THAN 2 MILLIAMPS CURRENT LEAKAGE @ 1500 VOLTS AC.
  - INSULATION RESISTANCE: 1000 MEGOHMS MIN @ 25°C.
  - MOISTURE RESISTANCE: IP67&IP69K (MATED CONDITION)
  - MATING CYCLE DURABILITY: 100 CYCLES
  - RoHS COMPLIANT
- MATING PART:ATHD06-1-12S-XX PLUG (XX = MODIFICATIONS )
- ALL DIMENSIONS ARE FOR REFERENCE USE ONLY.



ATFDH13-1-12P-BM0X VARIANTS		
CONTACT PLATING	PART NUMBER	WEIGHT (GRAMS)
GOLD	ATFDH13-1-12P-BM01	7.60
TIN	ATFDH13-1-12P-BM03	7.60

ATFDH13-1-12P-BM0X		DESCRIPTION		ITEM
QUANTITY	PART NUMBER	MATERIALS LIST		
UNLESS OTHERWISE SPECIFIED: 1) All dimensions are in metric (mm). 2) Tolerances are as follows: 1 PL DEC ±0.30 Fractions ±1/64 2 PL DEC ±0.15 Angles ±1° 3 PL DEC ±0.08		SIGNATURES		DATE
DRAWN: VITOLI		MAY-10-21		<b>Amphenol</b> Sine Systems - www.amphenol-sine.com 44724 Morley Drive Clinton Township, MI 48036
CHECKED: ORION LI		MAY-12-21		
APPROVAL: TOMMY XIE		MAY-13-21		
MATERIAL SPECIFICATIONS:		CUSTOMER:		1 POS, RIGHT ANGLE RECEPTACLE, PIN, BOARDLOCK, ATHD SERIES, SIZE 12, SNAP FIT
PROCESS SPECIFICATIONS:		THIS DRAWING IS SUPPLIED FOR INFORMATION ONLY. DESIGN FEATURES, SPECIFICATIONS AND PERFORMANCE DATA SHOWN HEREON ARE THE PROPERTY OF THE AMPHENOL CORPORATION. NO RIGHTS OF REPRODUCTION ARE IMPLIED. ALL DIMENSIONS ARE SUBJECT TO NORMAL MANUFACTURING VARIATIONS.		SIZE: <b>B</b> TYPE: <b>C-</b> DWG NO: <b>ATFDH13-1-12P-BM0X</b> REVISION: <b>A1</b> SCALE: <b>NONE</b> SHEET <b>1</b> OF <b>1</b>
NEXT ASSY:				

TITLE: 1 POS,RIGHT ANGLE RECEPTACLE,PIN,ATHD SERIES,SIZE 12,SNAP FIT DWG NO: ATFDH13-1-12P-BM0X REV: A1 SH: 1 OF: 1