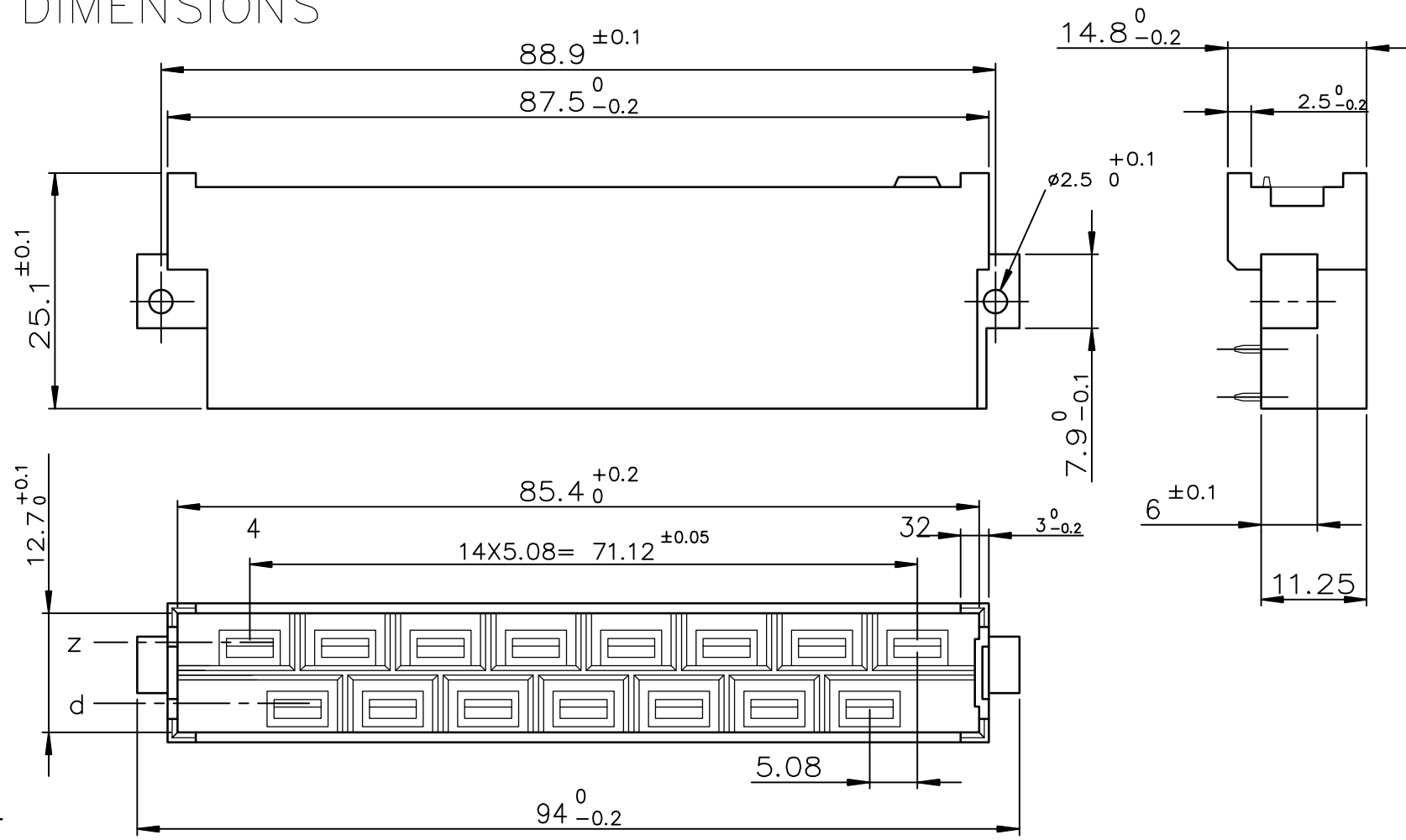


DIMENSIONS



ELECTRICAL DATA

-Current at AMB.	15 A at 20° / 10 A at 70°
-Contact resistance	≤8mΩ according to DIN 41640 Teil 4 test 2a
-Insulation resistance	≥10 ⁶ MΩ according to DIN 41640 teil 7 test 3a
-TEST VOLTAGE	according to DIN 41640 teil 21
contact/contact	3100 V
contact/ground	3100 V
grounding pin position	

MECHANICAL DATA

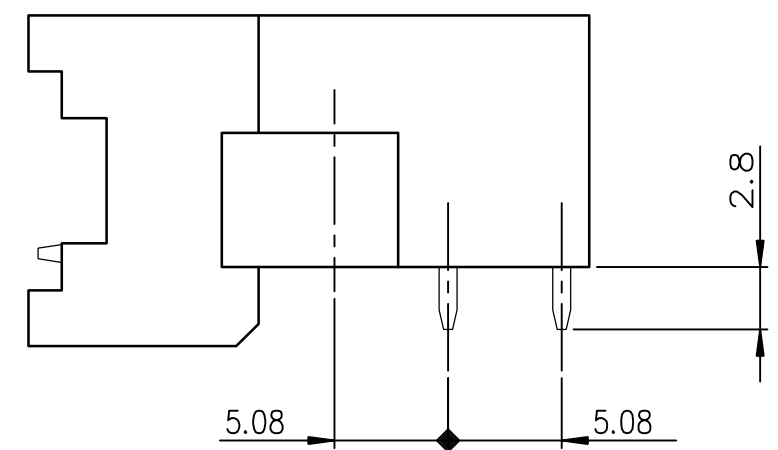
-Insertion force	≤90N
-Mechanical endurance	500 matings unmatings according to DIN41640 teil 21
-Material insulator	PA, Grey
-Material contacts	Copper alloy
-Finishing contact surface	448 - Tin (Lead Free) over Nickel, 668 - Silver over Nickel
-Finishing termination	448 - Tin (Lead Free) over Nickel, 668 - Silver over Nickel
-Schock	≤16mΩ according to DIN 41640 Teil 14 test 6c
-Vibration	10-2000Hz/20g according to DIN 41640 Teil 15

ENVIRONMENTAL DATA

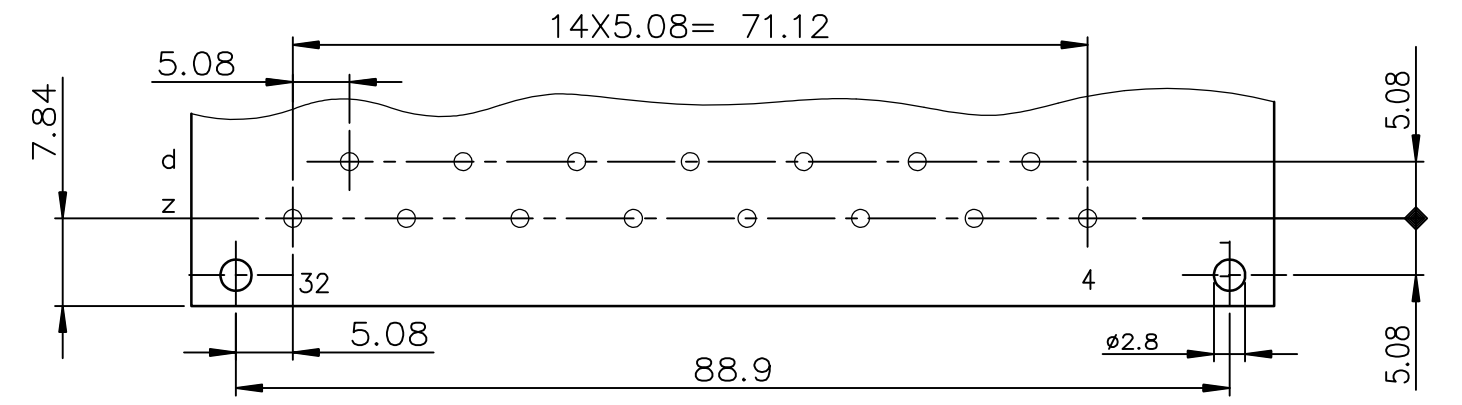
-Climatic category	According to DIN 41612 - class 1
-Corrosion	According to DIN 41612 - class 1

PERFORMANCES AS PER DIN 41612 STYLE H 15 CLASS 1

TERMINATION



P.C. CARD DRILLING



Part number 5159-029-15-23-448-ALF

Part number 5159-029-15-23-668-ALF

mat'l. code		surface		tolerance		projection		product family	
		ISO 1302 ✓		ISO 406 ISO 1101		mm		DIN POWER 5159	
ltr		ecn no		dr		date		title	
B		-		1998-12-23		1998-12-23		MALE CONNECTOR 2 ROW	
C		LS06-0097		LGO		2006-07-26		15 CONTACTS	
D		LS07-0288		LGO		2007-11-19		scale 1:1	
E		F10-0214		APA		2010-10-01		dwg no	
F		F12-0053		APA		2012-05-07		sheet 1 of 1	
G		B-17748		APA		2014-05-22		size	
H		ELX-I-36258		MJA		2020-03-11		A3	
sheet		revision		H				Amphenol FCI	
index		sheet		1				C01-5159-0026	
								type Product Customer Drawing	