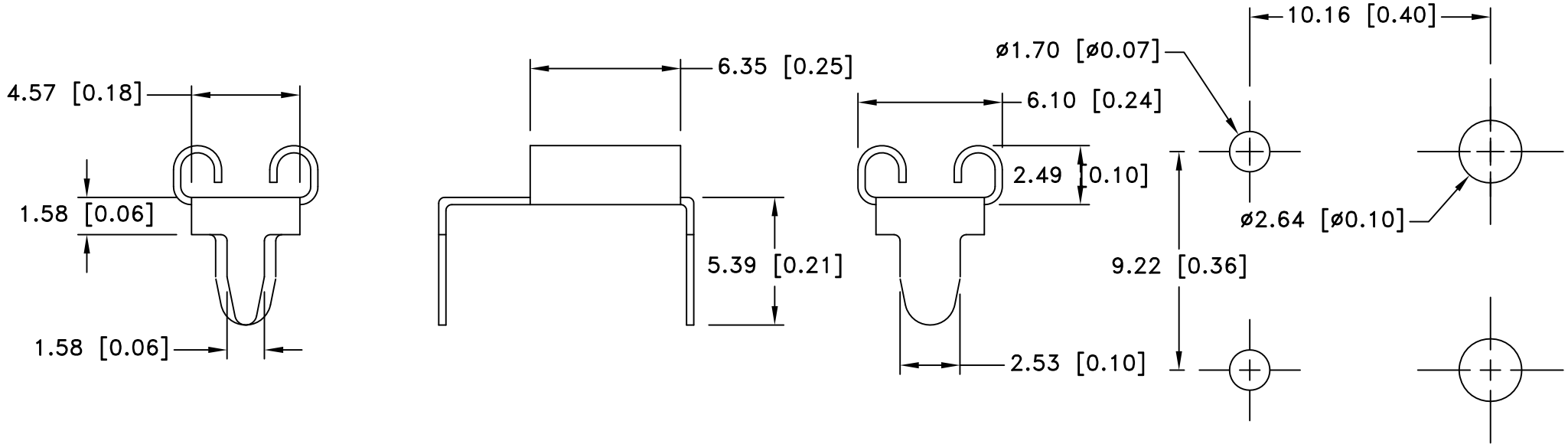



Date	SYM	REVISION RECORD	AUTH	DR.	CK.
7/08/06	A	Added "ROHS COMPLIANT"	T B	B S	
7/22/06	B	Removed "ROHS COMPLIANT"	T B	B S	
2/07/14	C	Updated Specification	T B	B S	



**SPECIFICATION:**

Current Rating: 15 Amps  
 Fuse Entry: Horizontal  
 Fuse Type: Automotive  
 Material: .012 [.30] Brass, Nickel Plate  
 Mounting: THM  
 Style: CLIP  
 Fuse Reference: Littlefuse ATO 257, Bussmann ATC, APR  
 Fuse Size: Standard  
 ROHS 2 COMPLIANT

**MOUNTING DETAIL FOR TWO CLIPS**

Tolerance (Except as noted)	 <b>Memory Protection Devices, Inc</b> 200 Broad Hollow Road, Farmingdale, New York 11735		
decimal $\pm .5$ (.020)		Scale	Drawn By B.S. Approved By T.B.
Fractional $\pm .8$ (.030)	Title AUTO FUSE CLIP FOR .205 x .025 STANDARD BLADE		
Angular $\pm 3^\circ$	Date 02/07/14	Drawing Number BK-6012	