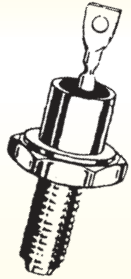




# 10 WATTS ZENER DIODES

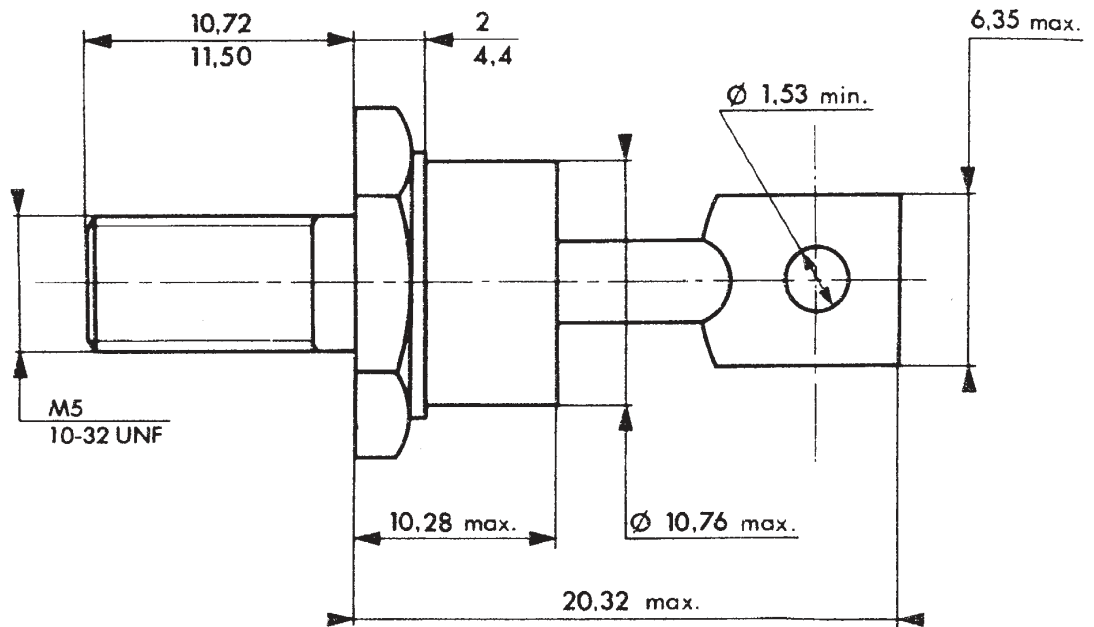


### ZENER DIODES

Available with anode-to-case and cathode-to-case connections (standard and reverse polarity, i.e., 1N2970 and 1N2970R).

The type numbers shown have standard tolerance of +20% on the nominal zener voltage. Add suffix "A" for +10% units or "B" for +5% units.

## D04



### MAXIMUM RATINGS:

Junction and Storage Temperature: -65°C to + 175°C

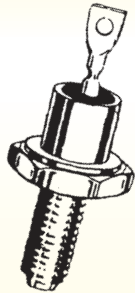
DC Power Dissipation: 10 Watts (Derate 83.3 mW/°C above 55°C)

- Standard polarity is anode-to-case
- Reverse polarity with cathode-to-case by designating R suffix in part number.





10 WATTS ZENER DIODES



- Standard voltage tolerance are +/-5% with B suffix, +/-10% with an A suffix, and +/-20% with no suffix.
• Standard polarity is anode-to-case.
• Reverse polarity with cathode-to-case by designating R suffix in part number.

ELECTRICAL CHARACTERISTICS (TC = 25°C unless otherwise specified, VF = 1.5 V max @ IF = 2 amp on all types.)

Table with 10 columns: Type Number, Nominal Zener Voltage Vz @ IZT Volts, Test Current (IZT) mA, Max Zener Impedance (ZT @ IZT Ohms, ZK @ IZT Ohms, IZT mA), Max DC Zener Current (IZM) mA, and Max Reverse Current\* (IR Max (uA), VR1, VR2). Rows list diode types from 1N2970 to 1N3015.

\*VR1 - Test Voltage for 5% Tolerance Device. VR2 - Test Voltage for 10% Tolerance Device. No Leakage Specified as 20% Tolerance Device.

