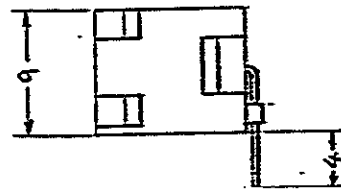
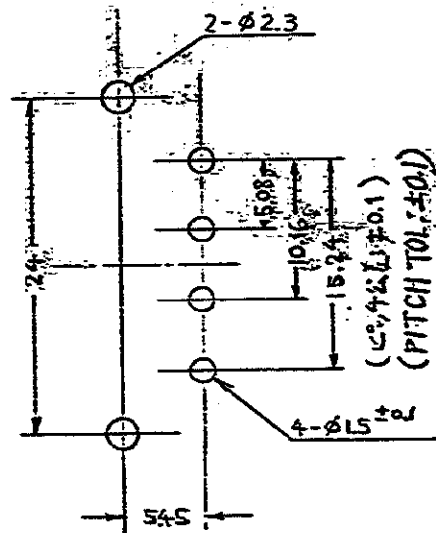
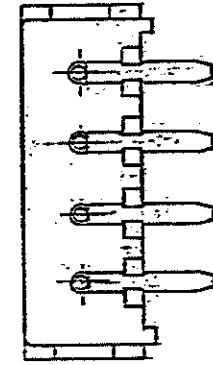
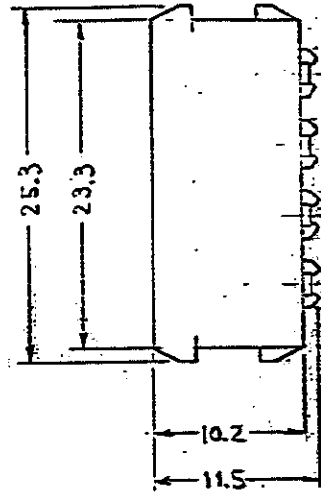
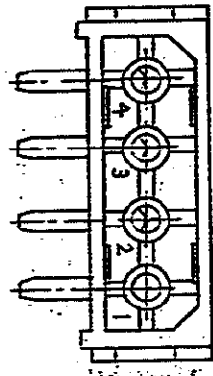


三角法 (THIRD ANGLE PROJECTION)



注:

1. 4Pプラグハウジング型番480424と適合する

NOTE

1. MATING WITH 4P PLUG HOUSING (PN:480424)

2. OBSOLETE PARTS: OBSOLETE CIS STREAMLINING PER D.RENAUD/D.SINISI

3. DIMENSION SHOWN REPRESENT PRODUCT IN DRY CONDITION. ADDITIONAL 2% GROWTH DUE TO END USE LOCATION MOISTURE ABSORPTION MAY OCCUR AND SHOULD BE ACCOUNTED FOR.

2	OBSOLETE	94V-0	172294-1
		94V-2	172294-1
	UL GRADE		P/N

推奨基板穴の位置
(一般公差: ±0.15)
RECOMMENDED P.C. BOARD LAYOUT
(GENERAL TOL: ±0.15)

材料 (MATERIAL) ハウジング: 6/6+10N HOUSING: 6/6 NYLON コンタクト: 22%の銅の青銅 CONTACT: PRE-TIN PHOSPHOR BRONZE		一般公差 TOLERANCE ±0.4 EXCEPT ± AS NOTED		品名 PIN HEADER ASSEMBLY	
注 (REMARKS)		DR		4P Commercial M-N-Lピンヘッダアセンブリ	
CHK		DE		SIZE	LOC
APR		REV		B	J
		REV		C-172294	
		REV		A2	SHEET

WAS P79-25231

UNIT: ALL DIMENSIONS IN MM. DO NOT SCALE PRINT. PROJECT NO. 255-009

2	A2	REVISED PER ECR-21-117185	PJ	VS	20OCT 2021
2	A1	ECO-10-000444	KK	AEG	JAN 10
2	A	ADDED 1-1 (FJ00-1105-2) X.I	SM		12/27
2	O	RELEASED J30-5774 J.C.P.			1/20
C		REV. REVISION RECORD	DR	CHK	DATE