

## Panel mounting frames - VS-PPC-F2-MSTB-POBK-1R-P - 1608281

Please be informed that the data shown in this PDF Document is generated from our Online Catalog. Please find the complete data in the user's documentation. Our General Terms of Use for Downloads are valid (<http://download.phoenixcontact.com>)



MSTB panel mounting frame, IP67, for push-pull interlocking, plastic, for PCB connection, for square panel cutout, with grommet, without mounting screws



### Key commercial data

Packing unit	1 1
Weight per Piece (excluding packing)	6.7 GRM
Custom tariff number	85389099
Country of origin	Germany

### Technical data

#### Mechanical characteristics

Locking type	Push Pull
Insertion/withdrawal cycles	≥ 500
Color	black

#### Ambient conditions

Ambient temperature (operation)	-40 °C ... 80 °C
Degree of protection	IP65/67

#### Material data

Inflammability class according to UL 94	V0
Housing material	PA-GF
Material	Plastic
Sealing material	NBR
Seal material	NBR

#### Electrical characteristics

Pollution degree	2
------------------	---

# Panel mounting frames - VS-PPC-F2-MSTB-POBK-1R-P - 1608281

## Classifications

eCl@ss

eCl@ss 4.0	272607xx
eCl@ss 4.1	27260701
eCl@ss 5.0	27260701
eCl@ss 5.1	27260701
eCl@ss 6.0	27260708
eCl@ss 7.0	27440312
eCl@ss 8.0	27440312

ETIM

ETIM 3.0	EC001121
ETIM 4.0	EC001121
ETIM 5.0	EC002310

UNSPSC

UNSPSC 6.01	31261501
UNSPSC 7.0901	31261501
UNSPSC 11	31261501
UNSPSC 12.01	31261501
UNSPSC 13.2	31261501

## Accessories

Accessories

Contact insert

Female insert - VS-MSTBVA 2,5/ 5-GB-5,08-BK-A - 1609565



MSTB contact insert, for PCB assembly, 24 V, 5-pos., with straight solder pins, RAL 9005 (black), for panel mounting frame VS-PPC-F2-MSTB-...-1R-P

Female insert - VS-MSTBVA 2,5/ 5-GB-5,08-RD-B - 1609581



MSTB contact insert, for PCB assembly, 400 V, 5-pos., with straight solder pins, RAL 3000 (red), for panel mounting frame VS-PPC-F2-MSTB-...-1R-P

# Panel mounting frames - VS-PPC-F2-MSTB-POBK-1R-P - 1608281

## Accessories

Female insert - VS-MSTBAH 2,5/ 5-GB-5,08-BK-A - 1657915



MSTB contact insert, for PCB assembly, 24 V, 5-pos., with angled solder pins, RAL 9005 (black), for panel mounting frame VS-PPC-F2-MSTB-...-1R-P

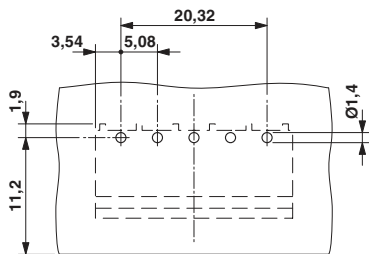
Female insert - VS-MSTBAH 2,5/ 5-GB-5,08-RD-B - 1609549



MSTB contact insert, for PCB assembly, 400 V, 5-pos., with angled solder pins, RAL 3000 (red), for panel mounting frame VS-PPC-F2-MSTB-...-1R-P

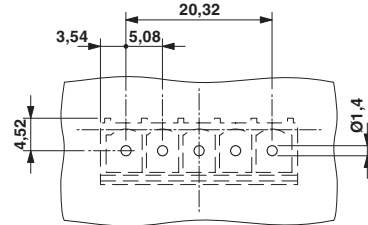
## Drawings

Drilling diagram



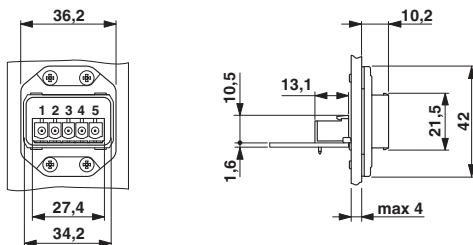
Drilling diagram

Drilling diagram



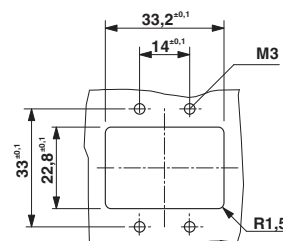
Drilling diagram

Dimensioned drawing



PROFINET POWER panel mounting frame, IP67

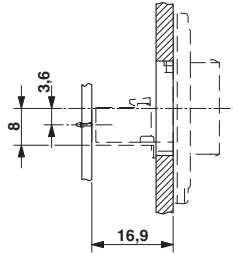
Dimensioned drawing



Panel cutout

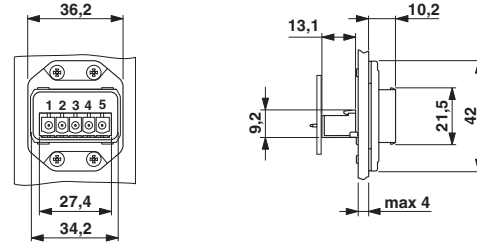
# Panel mounting frames - VS-PPC-F2-MSTB-POBK-1R-P - 1608281

Dimensioned drawing



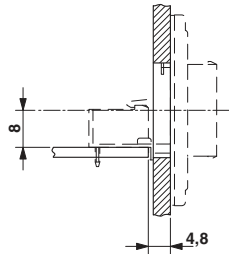
PCB alignment, straight solder pins

Dimensioned drawing



PROFINET POWER panel mounting frame, IP67

Dimensioned drawing



PCB alignment, angled solder pins