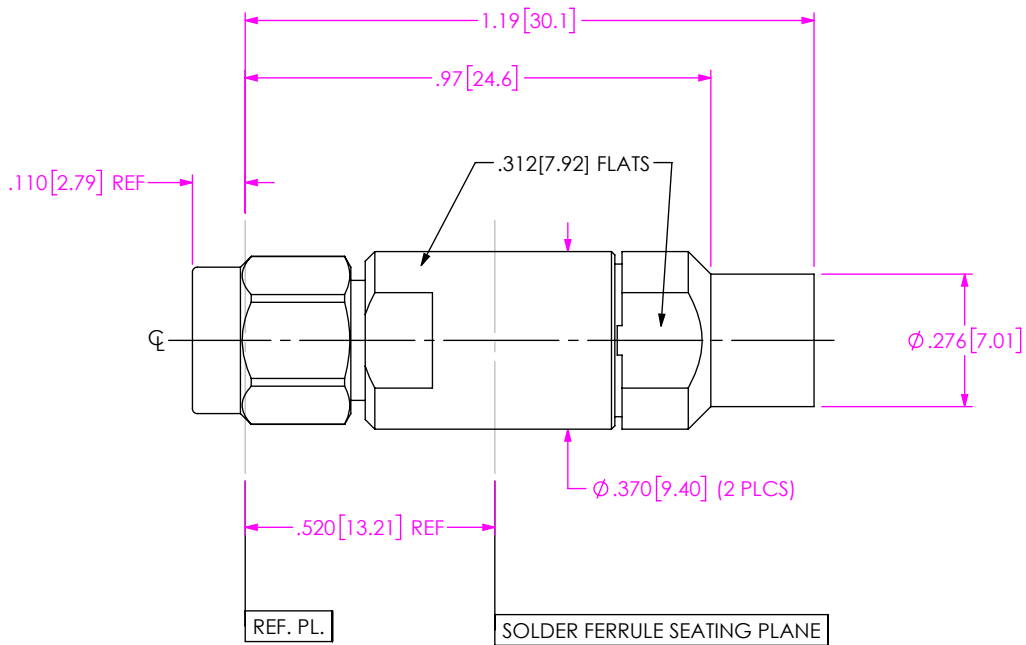


DO NOT SCALE FROM THIS PRINT

DESIGNED & DIMENSIONED IN INCHES[MILLIMETERS]



PRF01-P-C-EP-190-SS-1

SERIES
-01: SMA

GENDER
-P: PLUG

TYPE
-C: CABLE

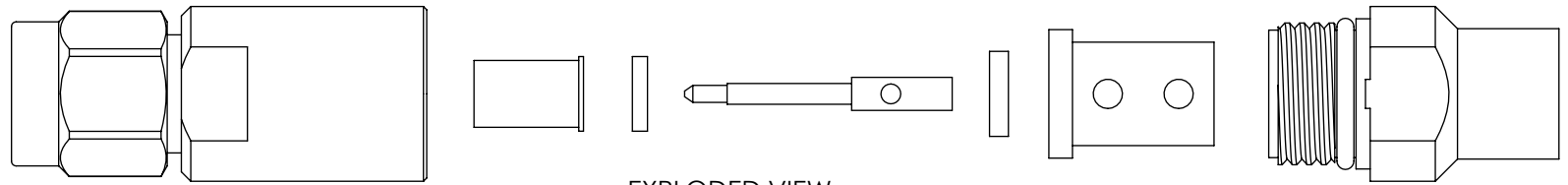
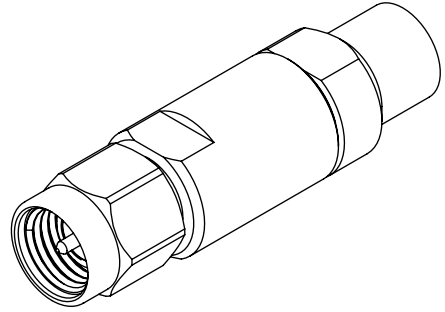
FINISH
-EP: 50μ" EXTRA HEAVY GOLD CENTER CONTACT, PASSIVATED OUTER CONTACT

OPTION
-1

TERMINATION
S: SOLDER CLAMP

ORIENTATION
-S: STRAIGHT

CABLE TYPE
-190: SEMFLEX HP190



EXPLODED VIEW
NOT TO SCALE
(FOR CLARITY ONLY)

NOTES:

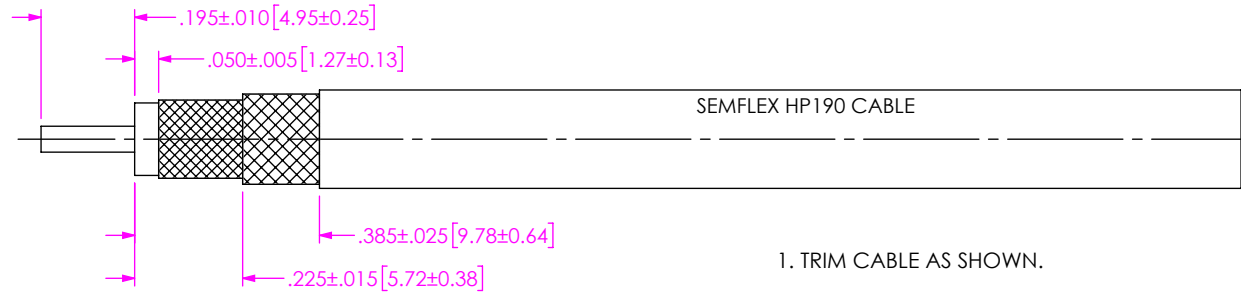
- MATERIAL:
 BODY, CLAMP NUT, COUPLING NUT: STAINLESS STEEL
 CONTACT, LOCK RING: BERYLLIUM COPPER
 SOLDER FERRULE: BRASS ALLOY
 BEADS: PEI
 INSULATOR: PTFE
 O-RING, GASKET: SILICONE RUBBER
- FINISH:
 BODY, CLAMP NUT, COUPLING NUT: PASSIVATED
 CONTACT, SOLDER FERRULE: 50μ" MIN. GOLD OVER 50μ" MIN. NICKEL PLATE
- PCI P/N: 3407

F:\DWG\MISC\MKTG\PRF01-P-C-EP-190-SS-1-MKT.SLDRW

UNLESS OTHERWISE SPECIFIED, DIMENSIONS ARE IN INCHES. TOLERANCES ARE: DECIMALS ANGLES .XX: ±.02[0.5] 1° .XXX: ±.005[0.13] .XXXX: ±.0005[0.013]	* PROPRIETARY NOTE * THIS DOCUMENT CONTAINS CONFIDENTIAL AND PROPRIETARY INFORMATION AND ALL DESIGN, MANUFACTURING, REPRODUCTION, USE, PATENT RIGHTS AND SALES RIGHTS ARE EXPRESSLY RESERVED BY SAMTEC, INC. THIS DOCUMENT SHALL NOT BE DISCLOSED, IN WHOLE OR PART, TO ANY UNAUTHORIZED PERSON OR ENTITY NOR REPRODUCED, TRANSFERRED OR INCORPORATED IN ANY OTHER PROJECT IN ANY MANNER WITHOUT THE EXPRESS WRITTEN CONSENT OF SAMTEC, INC.	
		520 PARK EAST BLVD. NEW ALBANY, IN 47150 PHONE: 812-944-6733 FAX: 812-948-5047 e-Mail: info@SAMTEC.com code 55322
		DESCRIPTION: SMA PLUG, SOLDER CLAMP FOR SEMFLEX HP 190 CABLE DWG. NO. PRF01-P-C-EP-190-SS-1 BY: CANDY W 05/14/2019 SHEET 1 OF 2
MATERIAL: DO NOT SCALE DRAWING	SHEET SCALE: 2.5:1	

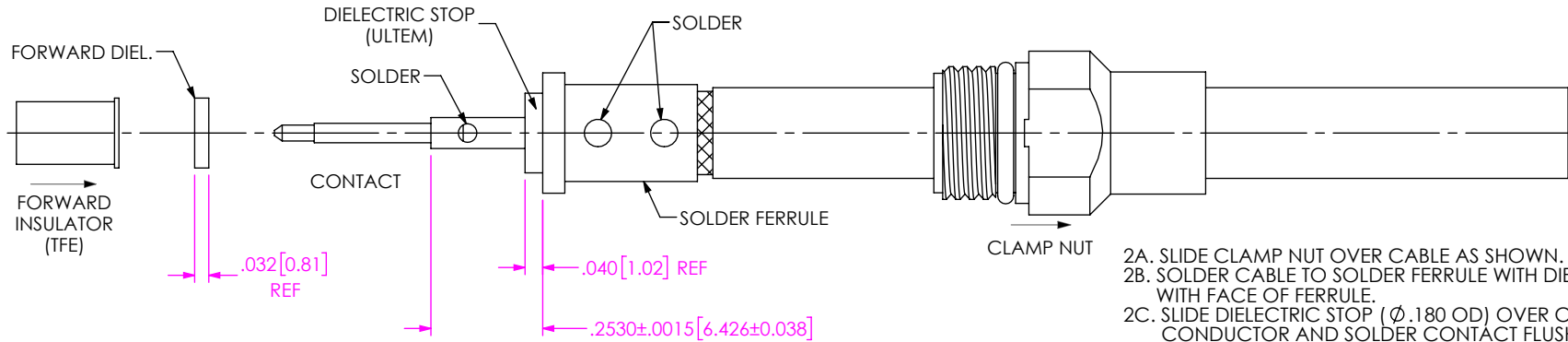
CABLE APPLICATION VIEWS

IN-PROCESS VIEW 1



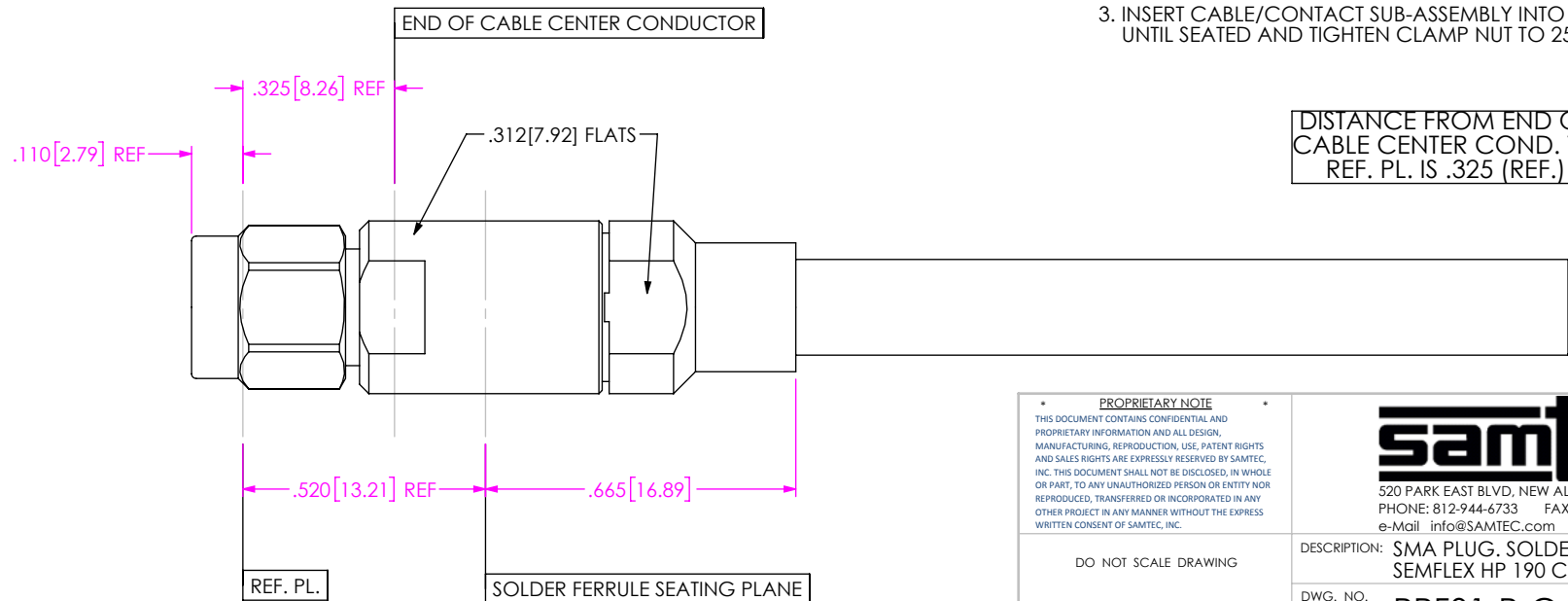
1. TRIM CABLE AS SHOWN.

IN-PROCESS VIEW 2



- 2A. SLIDE CLAMP NUT OVER CABLE AS SHOWN.
- 2B. SOLDER CABLE TO SOLDER FERRULE WITH DIELECTRIC FLUSH WITH FACE OF FERRULE.
- 2C. SLIDE DIELECTRIC STOP (Ø .180 OD) OVER CABLE CENTER CONDUCTOR AND SOLDER CONTACT FLUSH TO STOP TO DIMENSION SHOWN.
- 2D. SLIDE FORWARD INSULATOR & DIELECTRIC BEAD (Ø .158 OD) ONTO CONTACT.

IN-PROCESS VIEW 3



3. INSERT CABLE/CONTACT SUB-ASSEMBLY INTO CONNECTOR UNTIL SEATED AND TIGHTEN CLAMP NUT TO 25-35 IN.-LBS.

DISTANCE FROM END OF CABLE CENTER COND. TO REF. PL. IS .325 (REF.)

PROPRIETARY NOTE
THIS DOCUMENT CONTAINS CONFIDENTIAL AND PROPRIETARY INFORMATION AND ALL DESIGN, MANUFACTURING, REPRODUCTION, USE, PATENT RIGHTS AND SALES RIGHTS ARE EXPRESSLY RESERVED BY SAMTEC, INC. THIS DOCUMENT SHALL NOT BE DISCLOSED, IN WHOLE OR PART, TO ANY UNAUTHORIZED PERSON OR ENTITY NOR REPRODUCED, TRANSFERRED OR INCORPORATED IN ANY OTHER PROJECT IN ANY MANNER WITHOUT THE EXPRESS WRITTEN CONSENT OF SAMTEC, INC.



520 PARK EAST BLVD. NEW ALBANY, IN 47150
PHONE: 812-944-6733 FAX: 812-948-5047
e-Mail info@SAMTEC.com code 55322

DO NOT SCALE DRAWING

SHEET SCALE: 2.5:1

DESCRIPTION: SMA PLUG, SOLDER CLAMP FOR SEMFLX HP 190 CABLE

DWG. NO. PRF01-P-C-EP-190-SS-1

BY: CANDY W 05/14/2019 SHEET 2 OF 2