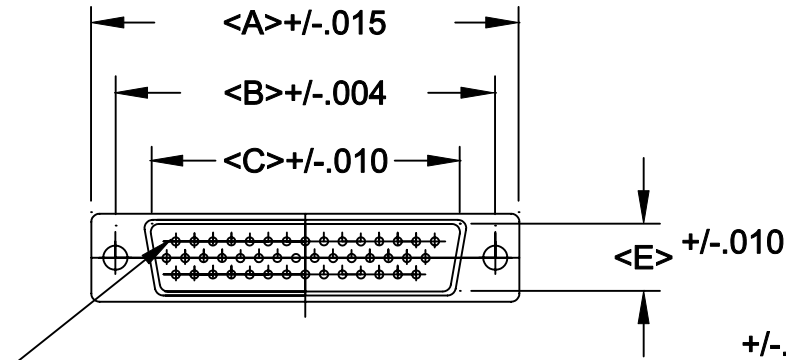
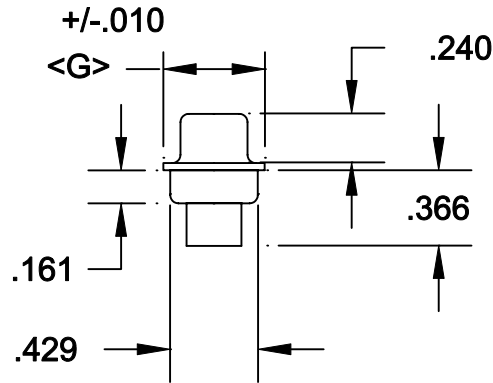
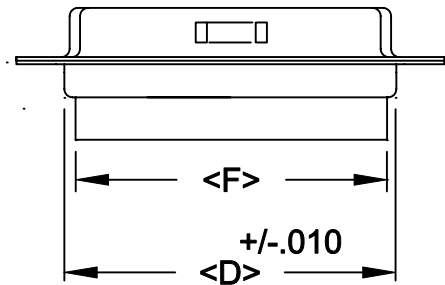


DESCRIPTION: **HIGH DENSITY MALE PIN & LOAD**

POS.	A	B	C	D	E	F	G
15	1.213	0.984	0.666	0.756	0.329	0.606	0.496
26	1.543	1.312	0.994	1.091	0.329	0.954	0.496
44	2.087	1.852	1.534	1.618	0.329	1.498	0.496
62	2.732	2.500	2.181	2.256	0.329	2.147	0.496
78	2.083	2.406	2.079	2.169	0.445	2.043	0.606



PIN #1



180-XXX-172-XX0

SERIES _____
 POSITIONS _____
 015 _____
 026 _____
 044 _____
 062 _____
 078 _____
 GENDER _____
 1 = MALE _____
 2 = FEMALE _____
 TERMINATION _____
 7 = CRIMP/POKE _____
 SHELL PLATING _____
 2 = TIN _____
 HARDWARE OPTIONS _____
 00 = NO HARDWARE _____
 01 = .098 4-40 CLINCH NUT BOARD SIDE _____
 02 = .250 4-40 CLINCH NUT BOARD SIDE _____
 03 = .250 4-40 CLINCH NUT MATING SIDE _____
 91 = .225 4-40 SPACER/BOARD LOCK _____
 PLATING OPTIONS _____
 0 = NO CONTACTS _____

SPECIFICATIONS:

MATERIALS:

SHELL: STEEL, TIN PLATED
 INSULATOR: UL 94V-0 RATED BLACK PBT
 +30% FIBER-GLASS OR NYLON-66

ELECTRICALS:

CURRENT RATING: 2 AMPS
 CONTACT RESISTANCE: 15 mOHMS MAX
 INSULTOR RESISTANCE: 1000 MOHMS MIN
 VOLTAGE: 500V AC FOR 1 MINUTE
 TEMPERATURE: -50°C TO +100°C



THESE DRAWINGS AND SPECIFICATIONS ARE THE PROPERTY OF NorComp AND SHALL NOT BE REPRODUCED, COPIED OR USED AS THE BASIS FOR THE MANUFACTURE OR SALE OF APPARATUS WITHOUT WRITTEN PERMISSION.

DRAWN: **PAM JENKINS**

DATE: **8-12-98**

CHECKED:

DATE:

NorComp

SCALE:

SHEET OF

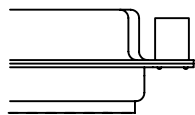
REV **3**

DWG NO.

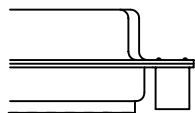
180-XXX-172-XX0

DESCRIPTION: CLINCH NUT HARDWARE

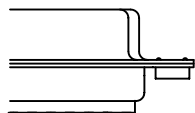
ALL CLINCH-NUTS ARE 4-40 INTERNAL THREADS



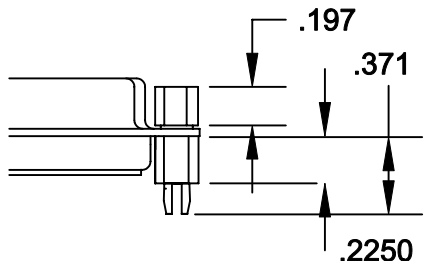
03X..... .250" (MATING SIDE) - CN8




02X250" (BOARD SIDE) - CN2



01X098" (BOARD SIDE) - CN1



91X225" (BOARD SIDE) - .197 MATING SIDE - CN10/SFS0440
 NOTE: 4-40 FEMALE SCREW LOCK IS REMOVABLE

	THESE DRAWINGS AND SPECIFICATIONS ARE THE PROPERTY OF NorComp AND SHALL NOT BE REPRODUCED, COPIED OR USED AS THE BASIS FOR THE MANUFACTURE OF SALE OF APPARATUS WITHOUT WRITTEN PERMISSION.		DRAWN: WAYNE ROBBINS	DATE: 8-23-98	
			CHECKED: PAM JENKINS	DATE: 8-24-98	
<h1>NorComp</h1>			SCALE:	SHEET 1 OF 1	REV 1
			DWG NO.		