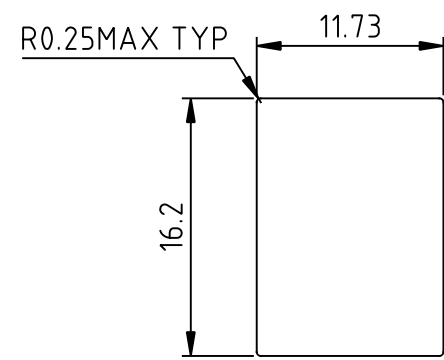
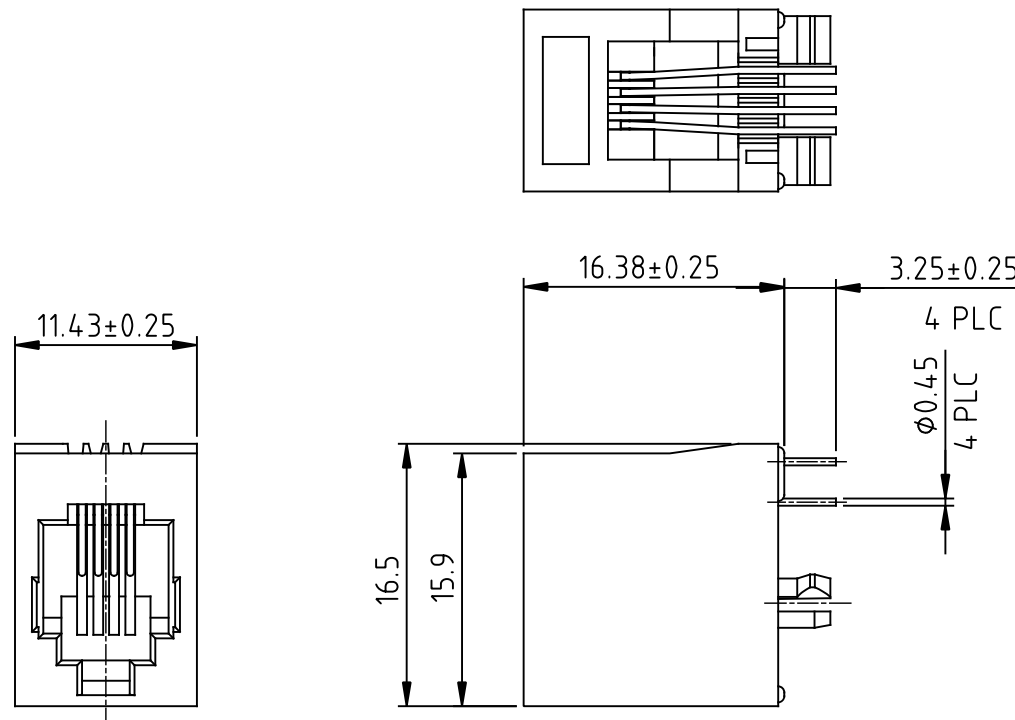


REVISIONS			
REV	DESCRIPTION, ECN, EAR NO.	DATE	APP'D
A	PROPOSAL	MAR 02/17	L.CHAN
B	UPDATING PRODUCT	JAN 27/21	KELVIN.T



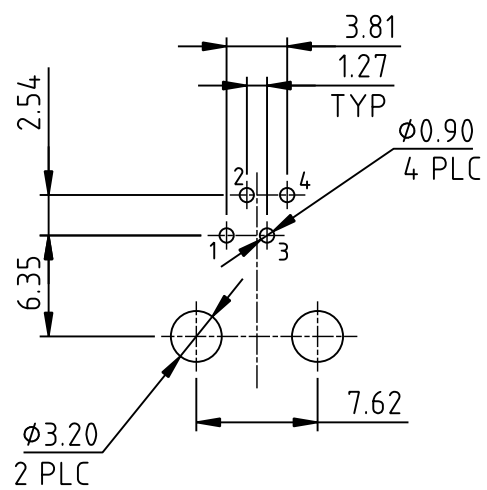
RECOMMENDED PANEL CUTOUT

MATERIALS:
 PLASTIC HOUSING: ENGINEERING THERMOPLASTIC
 FLAMMABILITY RATING UL94V-0
 COLOR:BLACK

CONTACTS: PHOSPHOR BRONZE
PLATING: SELECTIVE GOLD PLATING ON MATING SURFACES SEE AMPHENOL PART NUMBER FOR DETAIL.
 50 µ" [1.27 MICRONS]
 MIN. NICKEL UNDERPLATE.
 100 µ" [2.54 MICRONS]
 MIN. MATTE-TIN OR GOLD FLASH ON CONTACT TAILS.

PART NUMBER: RJE08-144-0X10

GOLD PLATING:
 1 = 6 µ"
 2 = 15 µ"
 3 = 30 µ"
 4 = 50 µ"



RECOMMENDED PCB LAYOUT

UNLESS SPECIFIED OTHERWISE		DRAWN	Hanson.C	DATE	Mar02,17	Amphenol Canada Corp. Commercial Products
PRIMARY UNITS	MILLIMETER	CHECKED	L.CHAN	DATE	Mar02,17	
SECONDARY	INCH	M.E. APP'D		Q.A. APP'D		TITLE
REFERENCE IN PARENTHESES		DWG APPR.		ENG. REL. NO.		RJE08 SERIES MODULAR JACK, 4 POSITION, 4 CONTACTS, WITHOUT FLANGE, UNSHIELDED, TOP ENTRY-ROHS COMPLIANT
GENERAL TOLERANCES		REF.		THIRD ANGLE PROJECTION	DO NOT SCALE DRAWING	DWG. NO.
1 DECIMAL PLACE	±0.30					P-RJE08-144-0X10
2 DECIMAL PLACES	±0.25					REV
3 DECIMAL PLACES	±0.20					B
ANGULAR DEGREES	±1.0°					CODE ID NO. 03554 DWG SIZE: C SCALE: N/A SHEET 1 OF 1