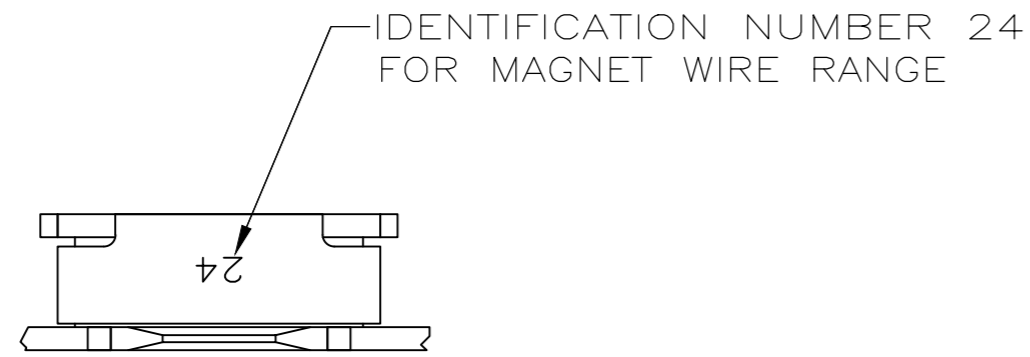
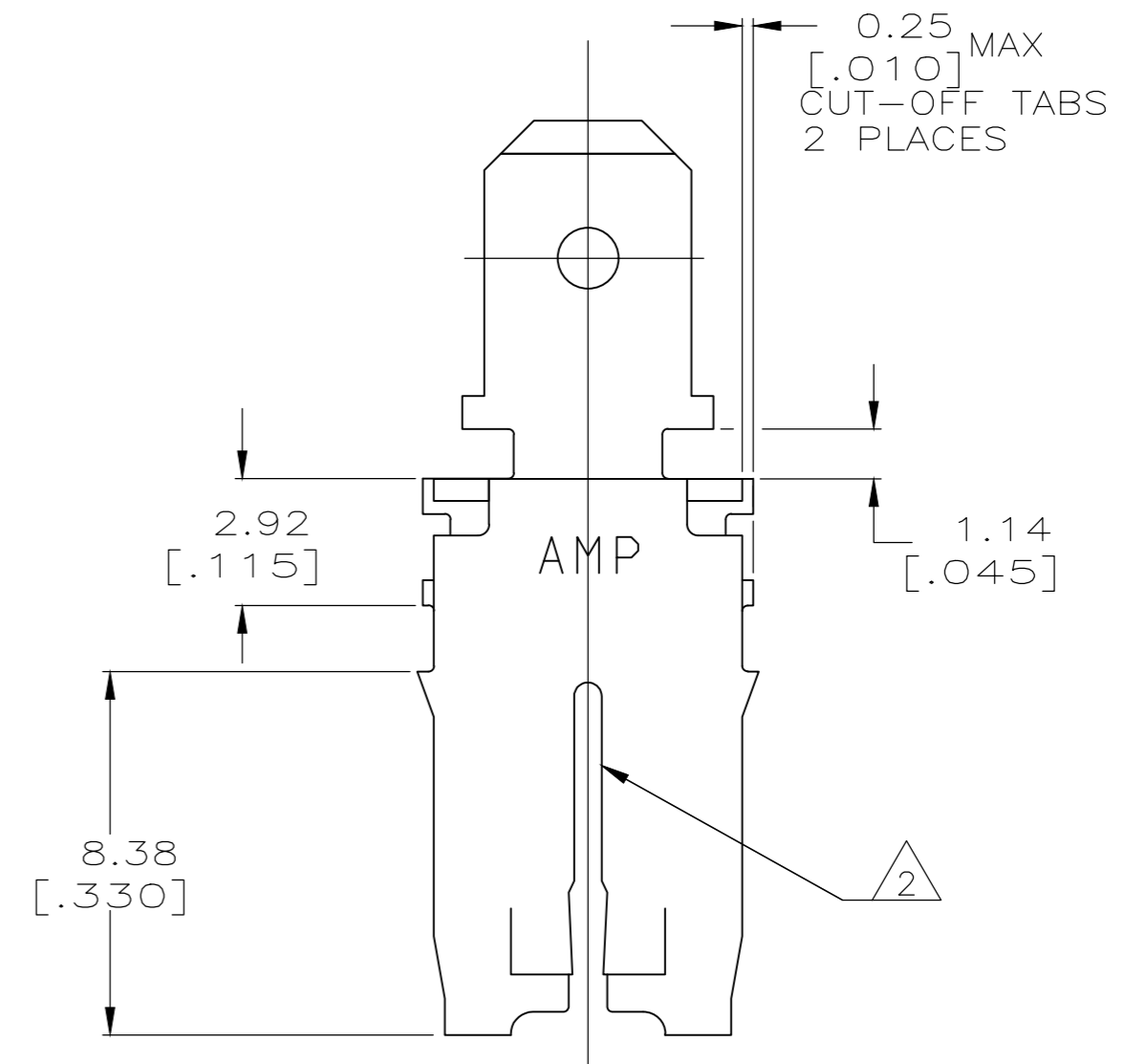
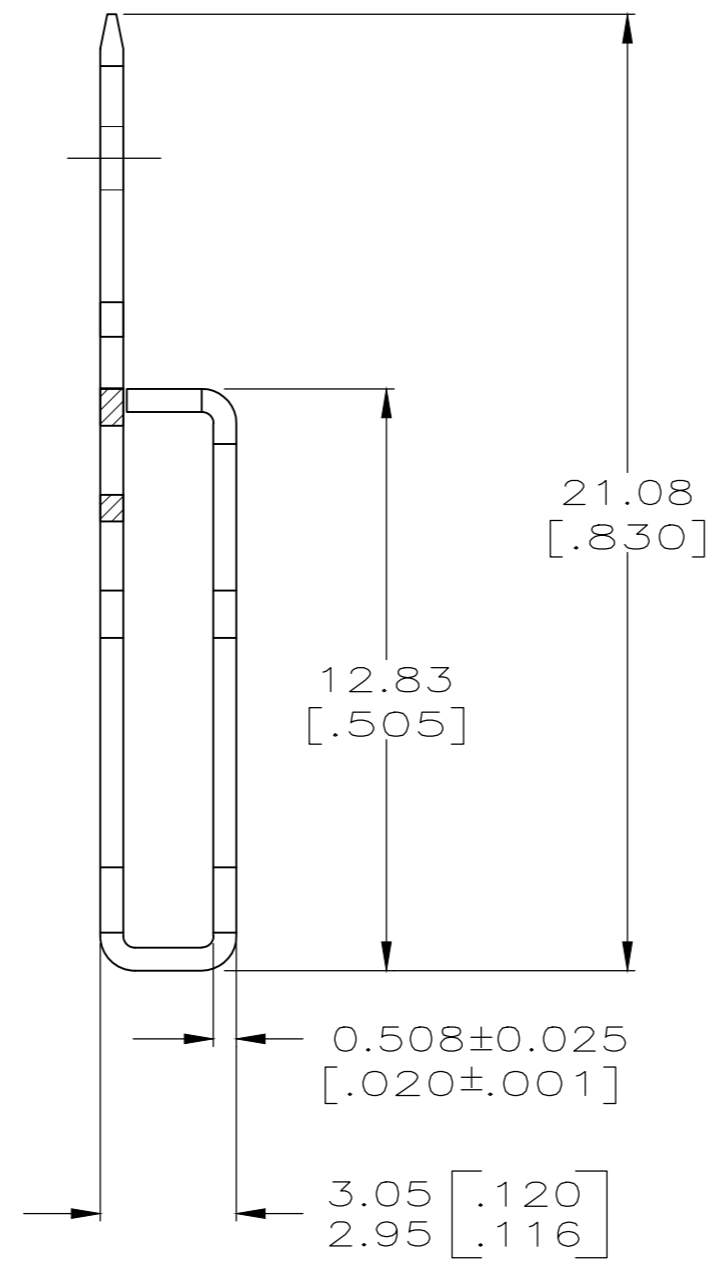
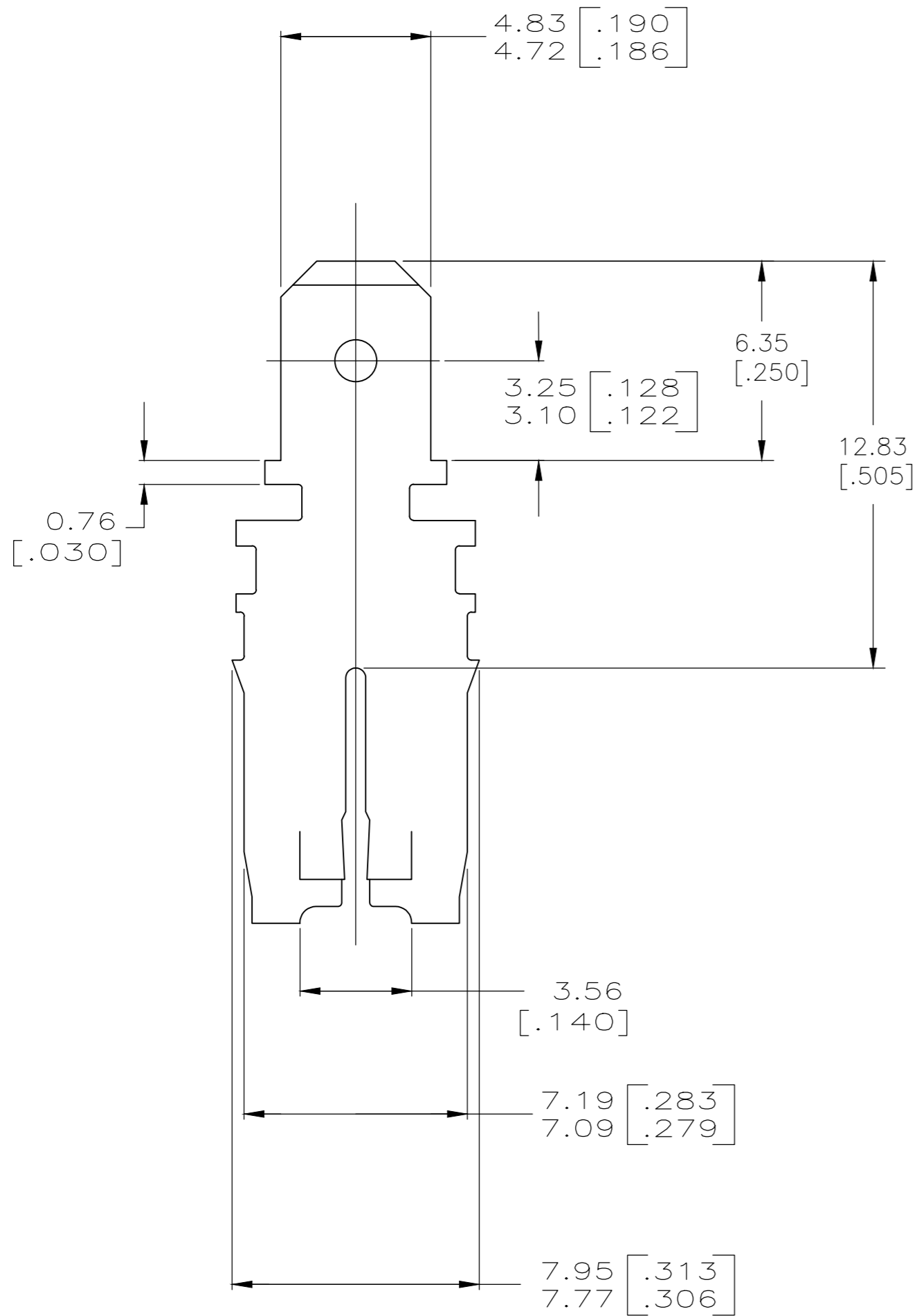


THIS DRAWING IS UNPUBLISHED. RELEASED FOR PUBLICATION
 © COPYRIGHT - By - ALL RIGHTS RESERVED.

LOC	DIST	REVISIONS			
P	LTR	DESCRIPTION	DATE	DWN	APVD
AF	50				
		A4 REVISED PER ECR-18-014989	26SEP2018	BW	JH



- 1 VARNISH RESIST OVER TIN.
- 2 SLOT ACCEPTS 0.91-1.15mm [#19-#17] AWG COPPER MAGNET WIRE OR SLOT ACCEPTS 0.97-1.22mm [#18.5-#16.5] AWG ALUMINIUM MAGNET WIRE. ALUMINIUM WIRE RANGE IS APPLICABLE FOR POST TIN PLATED PARTS ONLY. 2 WIRES OF THE SAME SIZE MAX PER SLOT.
- 3 AFTER INSERTION INTO PLASTIC HOLDER TAB PORTION MUST BE BENT OVER 45° TO 90° OR POTTED-IN TO PREVENT PULL-OUT WHEN MATING RECEPTACLE IS DISCONNECTED.



LOOSE PIECE	63643-1
TYPE	PART NO.

THIS DRAWING IS A CONTROLLED DOCUMENT.		DWN	MICHAEL S. FEHER	3/7/92	TE Connectivity	
DIMENSIONS: mm [INCHES]		CHK	JEFF R. RUTH	3/9/92	NAME	
TOLERANCES UNLESS OTHERWISE SPECIFIED:		APVD	NELSON E. NEFF	3/11/92	TAB, 4.75 [.187] FASTON™, MAG-MATE™	
0 PLC	± -	PRODUCT SPEC	108-2053	SIZE	CAGE CODE	DRAWING NO
1 PLC	± -	APPLICATION SPEC	114-2066	A2	00779	C=63643
2 PLC	± 0.25 [.010]	MATERIAL	BRASS	WEIGHT	-	RESTRICTED TO
3 PLC	± -	FINISH	1	CUSTOMER DRAWING	SCALE	6:1
4 PLC	± -			SHEET	1 of 1	REV
ANGLES	± -			A4		