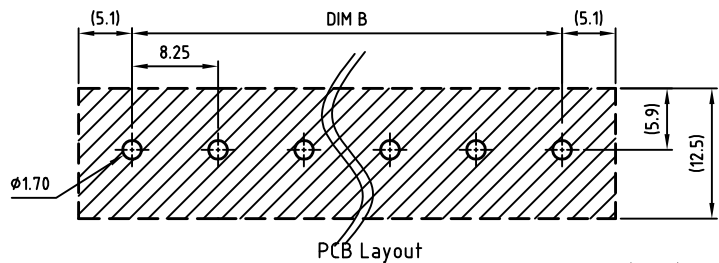
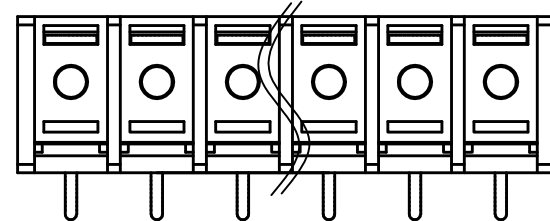
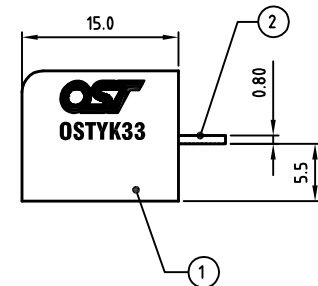
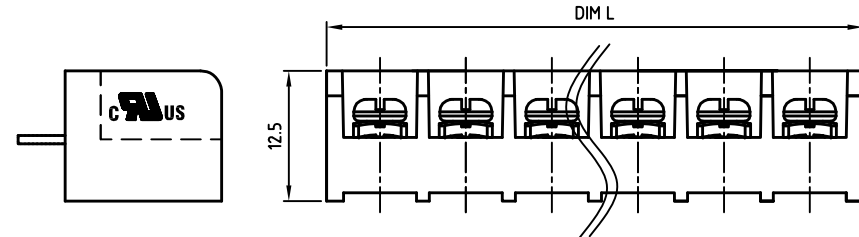
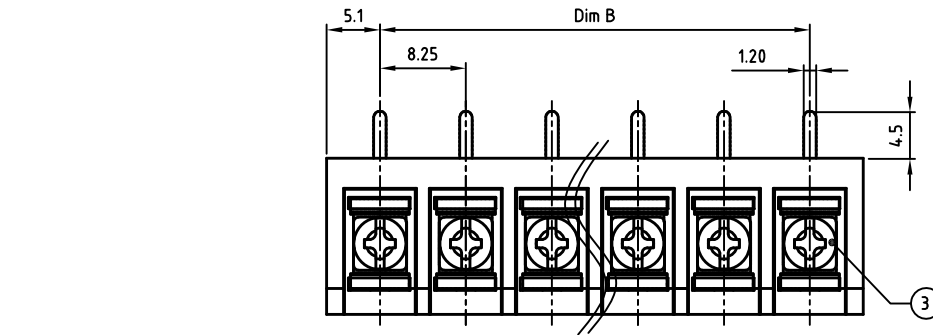


Transfer or duplication of this document as well as the utilisation or communication of its content are not permitted unless express consent is granted. Violations give rise to claims for damages. All rights reserved in case of patent, utility model or design patent registrations.



PCB Layout

Technical data

- 1.Nominal voltage: 300V/20A  
PITCH: 8.25mm
- 2.Connection capacity:  
AWG 22-12
- 3.Insulation Withstanding Voltage:  
AC 2500V/MIN
- 4.Insulation Resistance:  
1000MΩ or more at DC500V
- 5.Tightening torque:  
10.15kgf.cm (8.8 Lb-In / 1.0N.m)
- 6.Screw thread: M3
- 7.Operating temperature range:-40°C ~ 115°C  
Soldering temperature:250°C±10°C /5s
- 8.Undimensioned Tolerances:

Dim.L=Px8.25+1.95		
Dim.B=(P-1)x8.25		
P= number of poles		
0-30mm	±0.15	±0.20
over 30mm-60mm	±0.20	±0.30
over 60mm-90mm	±0.25	±0.40
over 90mm-180mm	±0.30	±0.50
over 180mm	±0.50	±0.80

- 9.Safety approval:
- 10.RoHS Compliance

Part No.: OSTYK332XX030

No. of Poles	
02	2 Poles
03	3 Poles
...	...
24	24 Poles

3	SCREW+WASHER	STEEL	M3x0.5, Ni Plated	P	
2	CONTACT	BRASS	M3x0.5, Tin PLATED	P	
1	BODY	PA66 UL94V-0	Black	1	
ITEM	NAME OF PART	MATERIAL	NOTES	Q"TY	
DWG	WF. Zhang	DATE 2018.01.05	UNITS: MM	SHEET: 1 OF 1	Tolerance
CHK.	WF. Zhang	DATE 2018.04.03	SCALE: NONE 2:1 (:)	REV.: B	X. ±0.50
APP.		DATE	TITLE: OSTYK332 8.25 Series		X.X ±0.30
			PART NO. OSTYK332XX030		X.XX ±1.0
			DWG NO. OSTYK332XX030.dwg		X* ±1*

	Dimension is changed from 1.1 to 1.2	WF.Z	4/3'18
SIGN	DESCRIPTION	CHK.	DATE



ON-SHORE TECHNOLOGY, INC.