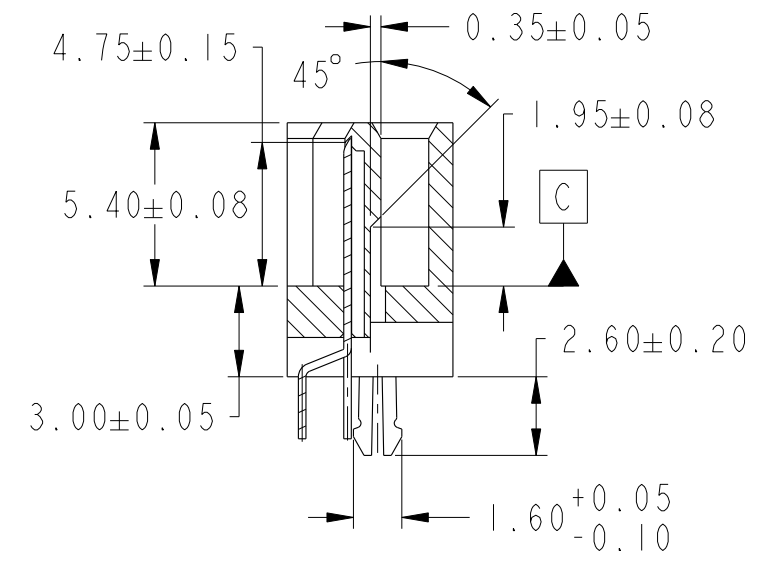
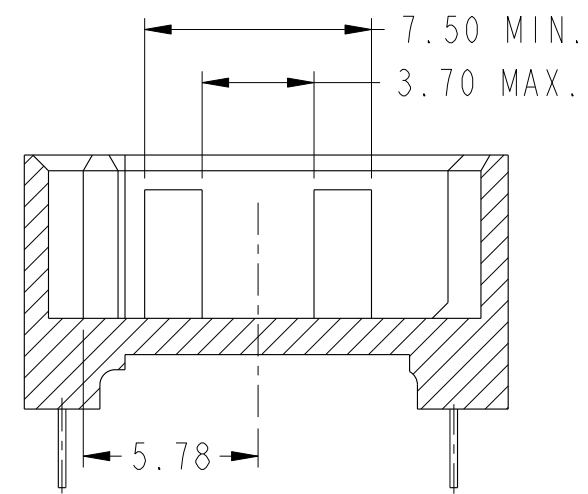
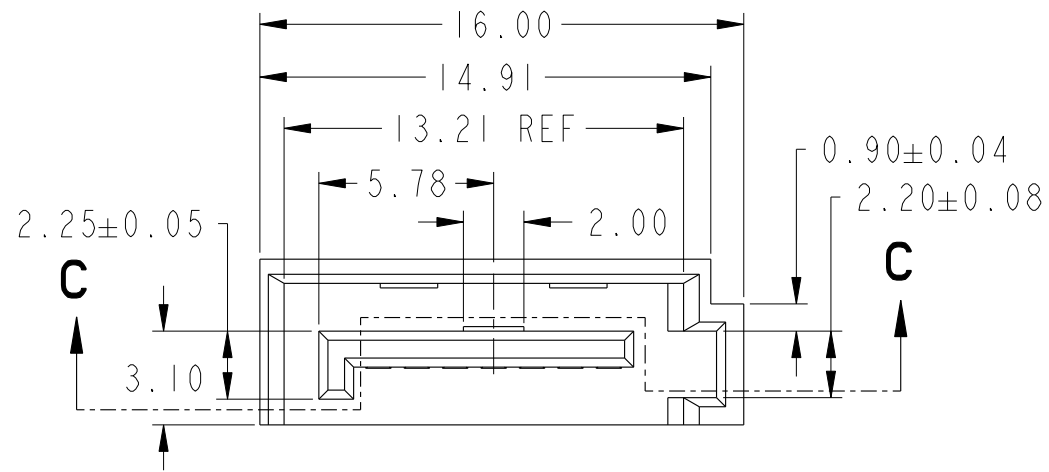
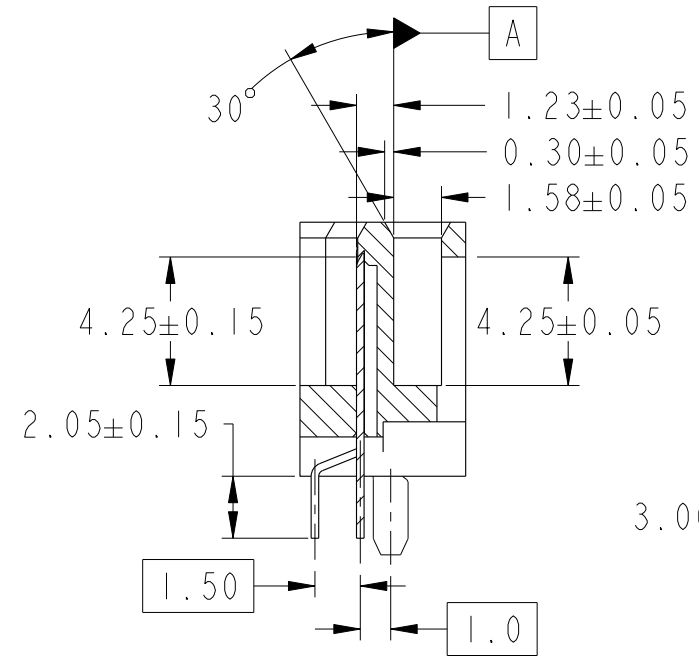
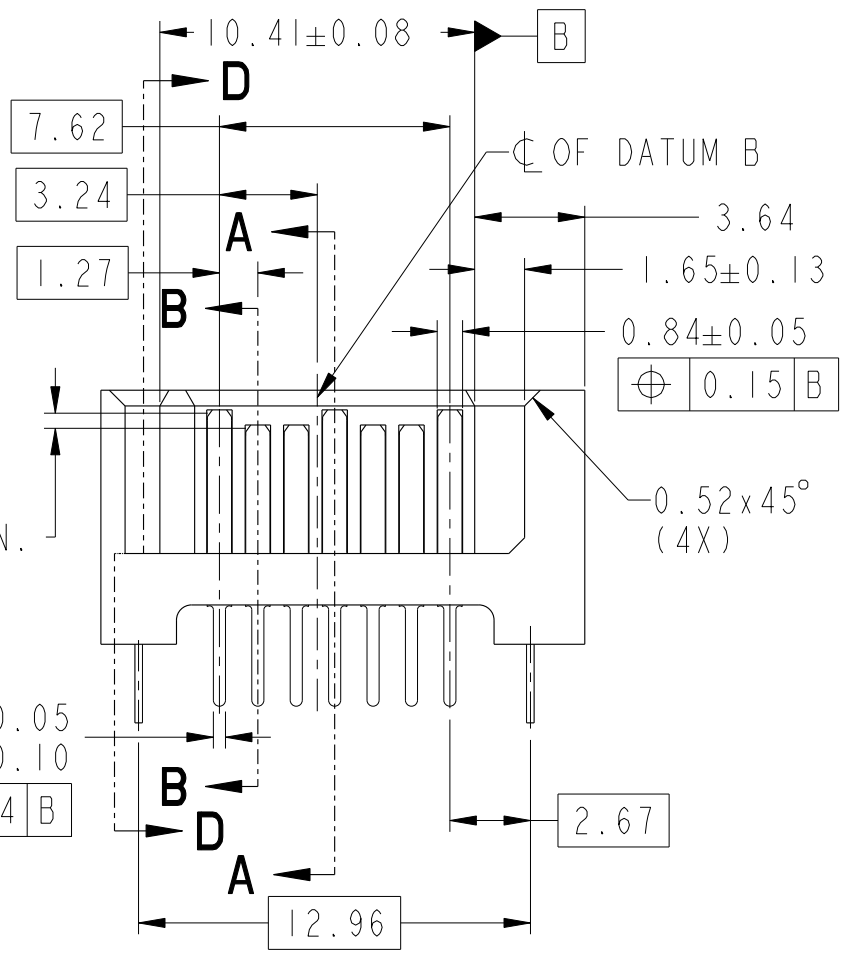


PRODUCT NO.
10035690-XXX-3W

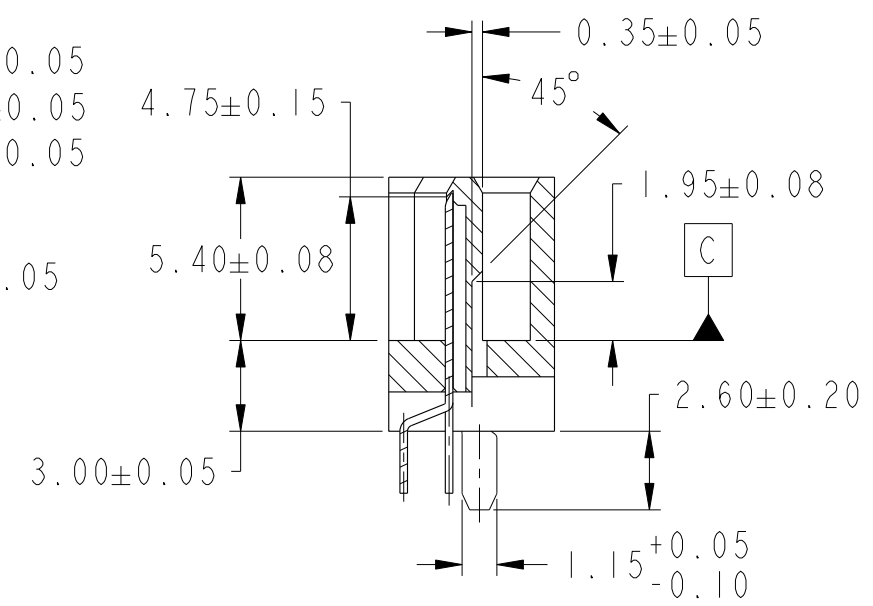


SECTION C-C

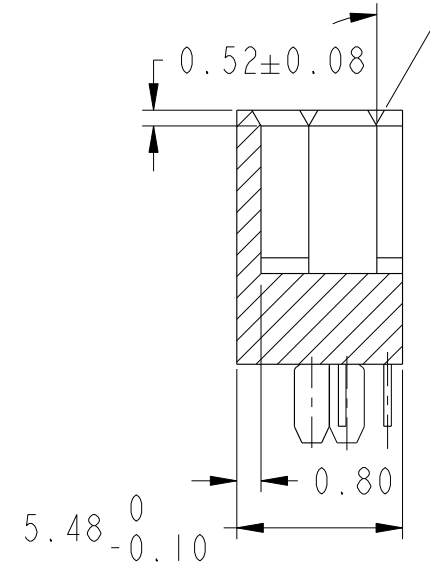
SECTION A-A
METAL CLIP A



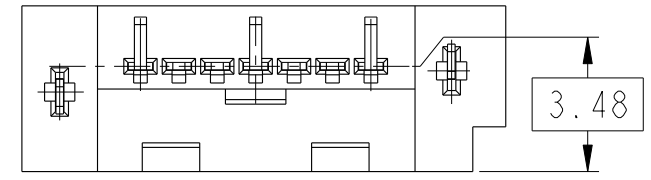
SECTION B-B



SECTION A-A
METAL CLIP B



SECTION D-D



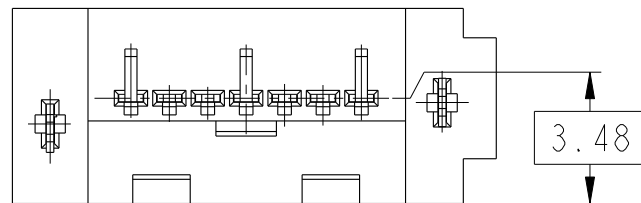
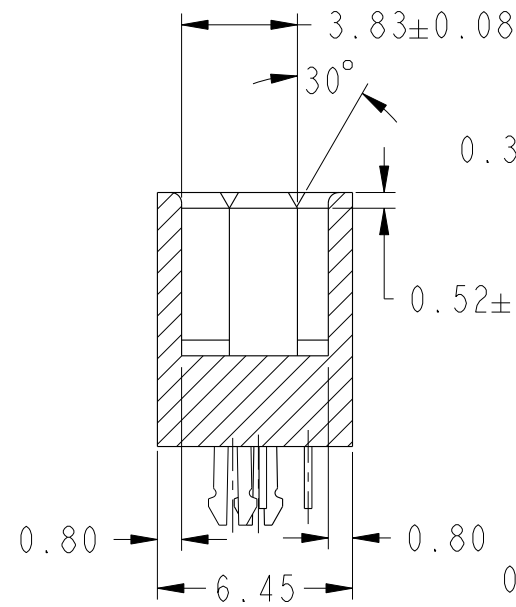
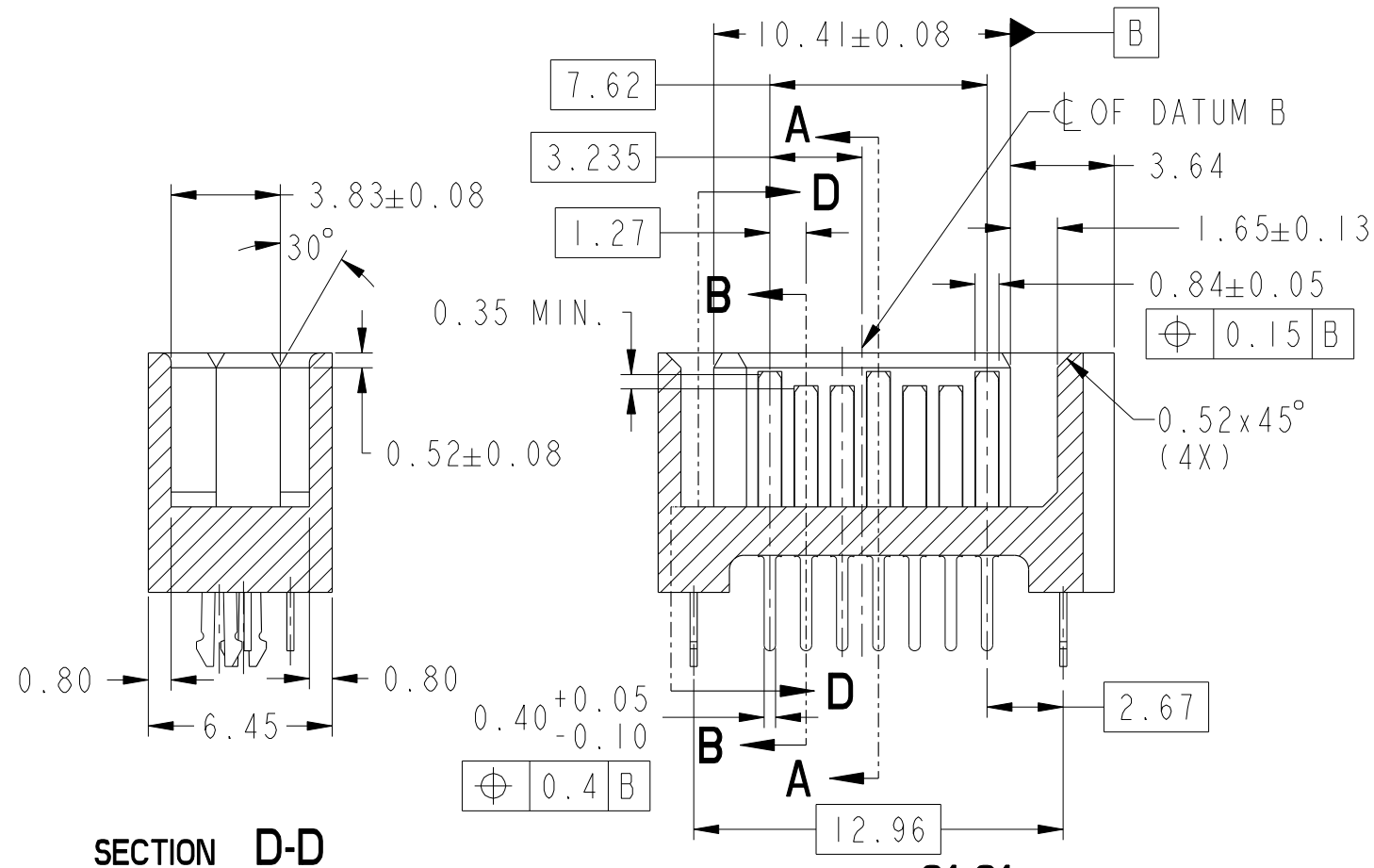
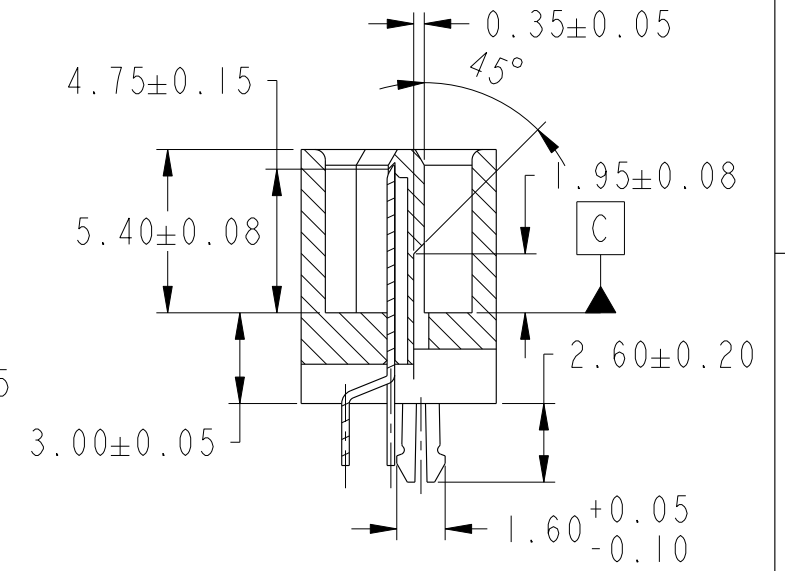
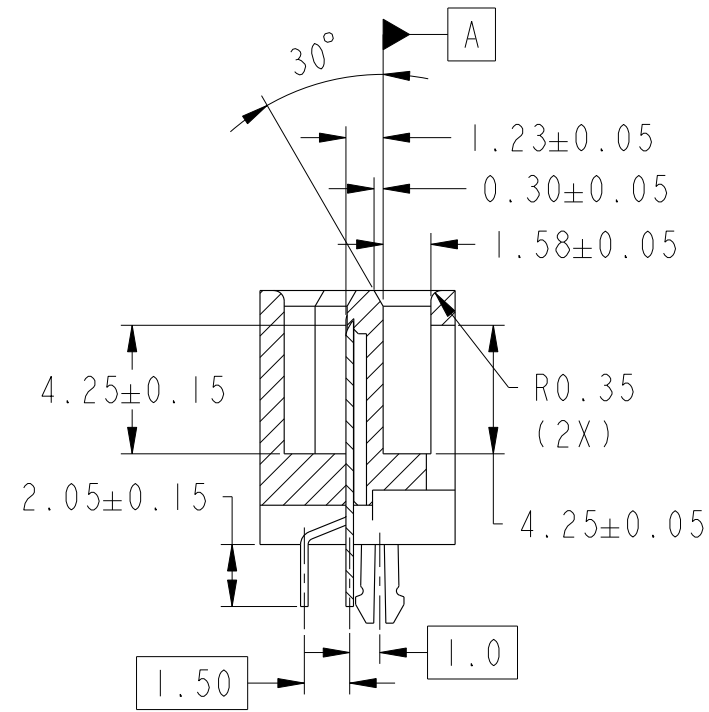
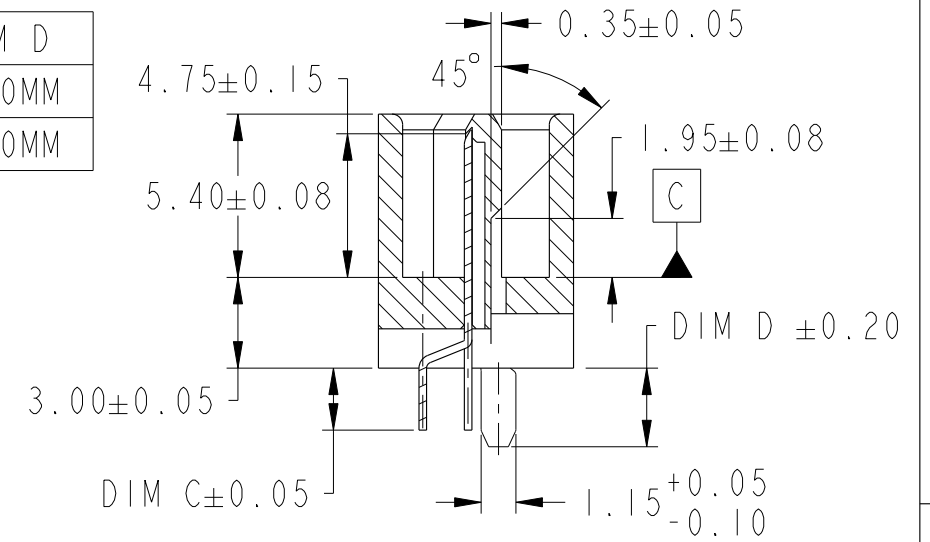
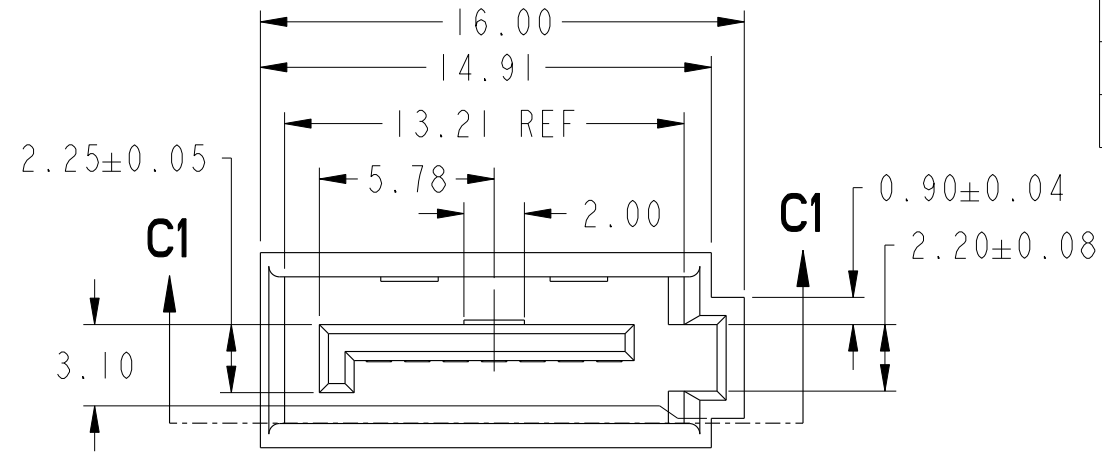
spec ref	-	dr	Wade Liu	09/09/05	projection	mm	size	A3	scale	4:1
tolerance std	ASME Y14.5M	eng	Wade Liu	09/09/05			ecn no	ELX-S-32119-1	rel level	ptc.wm.lifecycle.state
TOLERANCES UNLESS OTHERWISE SPECIFIED		chr	Wade Liu	09/09/05						
surface	linear	appr	Sterling Lin	09/09/05	S-ATA SIGNAL PLUG DIP VERTICAL TYPE ASSY		rel level	ptc.wm.lifecycle.state	dwg no	10035690
ASME Y14.5	angular				cat. no.	-	Product - Customer Drw	sheet 1 of 4	rev	C

Amphenol FCI

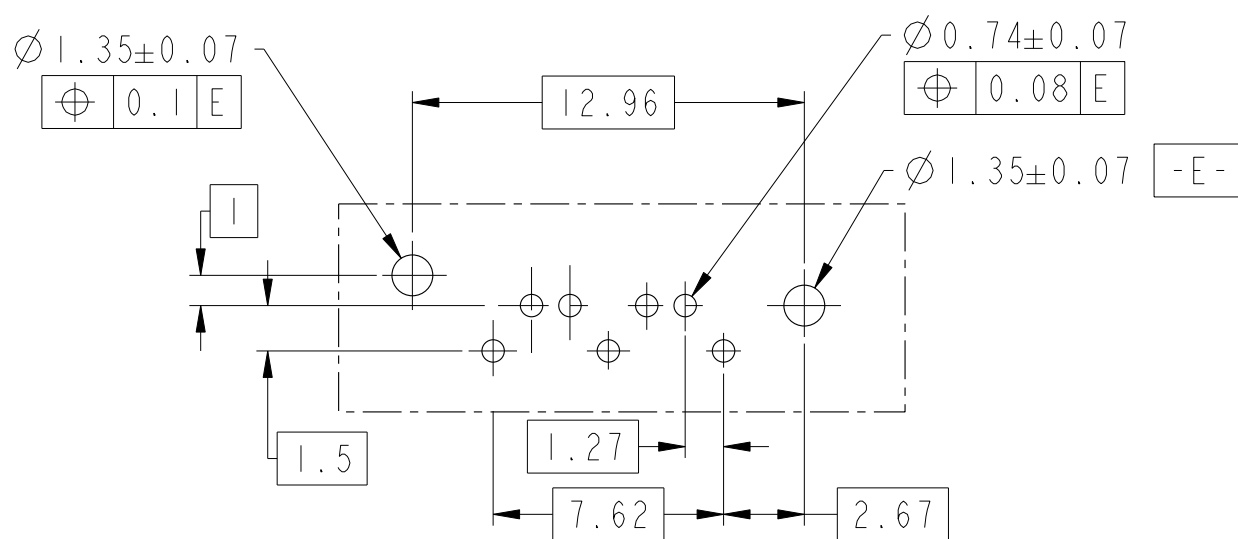
© 2016 AFCI

PRODUCT NO.
10035690-XXX-4W

SUFFIX	DIM C	DIM D
OTHERS	2.05MM	2.60MM
-XX4XLF	3.05MM	3.40MM



spec ref	-	dr	Wade Liu	09/09/05	projection	mm	size	A3	scale	4:1
tolerance std	ASME Y14.5M	eng	Wade Liu	09/09/05			ecn no	ELX-S-32119-1	rel level	ptc.wm.lifecycle.state
TOLERANCES UNLESS OTHERWISE SPECIFIED		chr	Wade Liu	09/09/05						
surface	linear	appr	Sterling Lin	09/09/05	S-ATA SIGNAL PLUG DIP VERTICAL TYPE ASSY		cat. no.	-	Product - Customer Drw	sheet 2 of 4
	angular									



RECOMMENDED MOUNTING LAYOUT
 RECOMMENDED PCB T = 1.60MM
 TOLERANCE UNLESS OTHERWISE ±0.1

10035690 - X X X-X XX

- BLANK: PLATING TIN/LEAD
- LF: PLATING LEAD FREE
- 3W: 3 WALL
- 4W: 4 WALL
- 2: METAL CLIP A WITH 2.05MM TAIL
- 3: METAL CLIP B WITH 2.05MM TAIL
- 4: METAL CLIP B WITH 3.05MM TAIL (4W ONLY)
- Au THICKNESS OF CONTACT POINT
- 0: 15μ" MIN
- 2: 3μ" MIN
- 1: 30μ" MIN.
- HOUSING COLOR
- 0: BLACK

spec ref	-	dr	Wade Liu	09/09/05	projection		size	A3	scale	4:1	
tolerance std	ASME Y14.5M	eng	Wade Liu	09/09/05	mm		ecn no	ELX-S-32119-1			
TOLERANCES UNLESS OTHERWISE SPECIFIED		chr	Wade Liu	09/09/05	product family	SATA	rel level	ptc.wm.lifecycle.state			
surface	linear	appr	Sterling Lin	09/09/05	S-ATA SIGNAL PLUG		dwg no	10035690		rev	C
	angular			cat. no.	-	Product - Customer Drw	sheet 3 of 4				
	0.X	±0.30		Amphenol FCI							
	0.XX	±0.20		DIP VERTICAL TYPE ASSY							
	0.XXX	±0.10									
	0°	±2°									

A

B

C

D


A

B

C

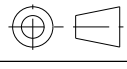

D

NOTE:

- 1. MATERIAL
 - i) HOUSING: PA9T UL94V-0.
 - ii) TERMINAL: BRASS: C2680.
 - iii) HOLD DOWN: BRASS: C2680.
- 2. FINISH
 - i) TERMINAL: Au PLATING AT CONTACT POINT
100μ" MIN Sn-Pb or PURE TIN PLATING AT SOLDER TAIL WITH NICKEL UNDERPLATE.
 - ii) HOLD DOWN: 100-200μ" Sn-Pb or PURE TIN PLATING.
- 3. P/N:10035690-XXXXLF
THE HOUSING WILL WITHSTAND EXPOSURE TO 260°C PEAK TEMPERATURE FOR 10 SECONDS IN A WAVE SOLDER APPLICATION WITH 1.6MM MINIMUM THICK CIRCUIT BOARD.
- 4. PACKAGING SPEC: GS-14-840.
- 5. PRODUCT SPEC: GS-12-194.
- 6. THIS PRODUCT MEETS EUROPEAN UNION DIRECTIVES AND OTHER CONUNTRY REGULATIONS AS DESCRIBED IN GS-47-0004.
- 7. DIMENSIONS WITH AN "OVAL" AROUND ARE CRITICAL CHARACTERISTIC (CC) DIMENSIONS OR (IPI) IN PROCESS INSPECTION. OHTER FEATURES OR STAND-ALONE GEOMETRICAL TOLERANCES THAT ARE DESIGNATED AS (CC) OR (IPI) HAVE THE NOTE "INSPECTION FEATURES" BELOW THEM.
- 8. A  SYMBOL WILL BE NEXT TO ANY DIMENSION, VIEW, OR NOTE WHICH HAS BEEN MODIFIED WITH THE CURRENT DRAWING REVISION.

Amphenol
FCi

© 2016 AFCI

spec ref		-		dr	Wade Liu	09/09/05	projection	mm	size	A3	scale	4:1
tolerance std		ASME Y14.5M		eng	Wade Liu	09/09/05			ecn no ELX-S-32119-1			
TOLERANCES UNLESS OTHERWISE SPECIFIED		chr	Wade Liu	09/09/05	product family				SATA	rel level		ptc.wm.lifecycle.state
surface	linear	0.X	±0.30	Amphenol FCi	S-ATA SIGNAL PLUG DIP VERTICAL TYPE ASSY			dwg no	10035690		rev C	
		0.XX	±0.20									
		0.XXX	±0.10									
ASME Y14.5	angular	0°	±2°	cat. no.	-	Product - Customer Drw		sheet 4 of 4				