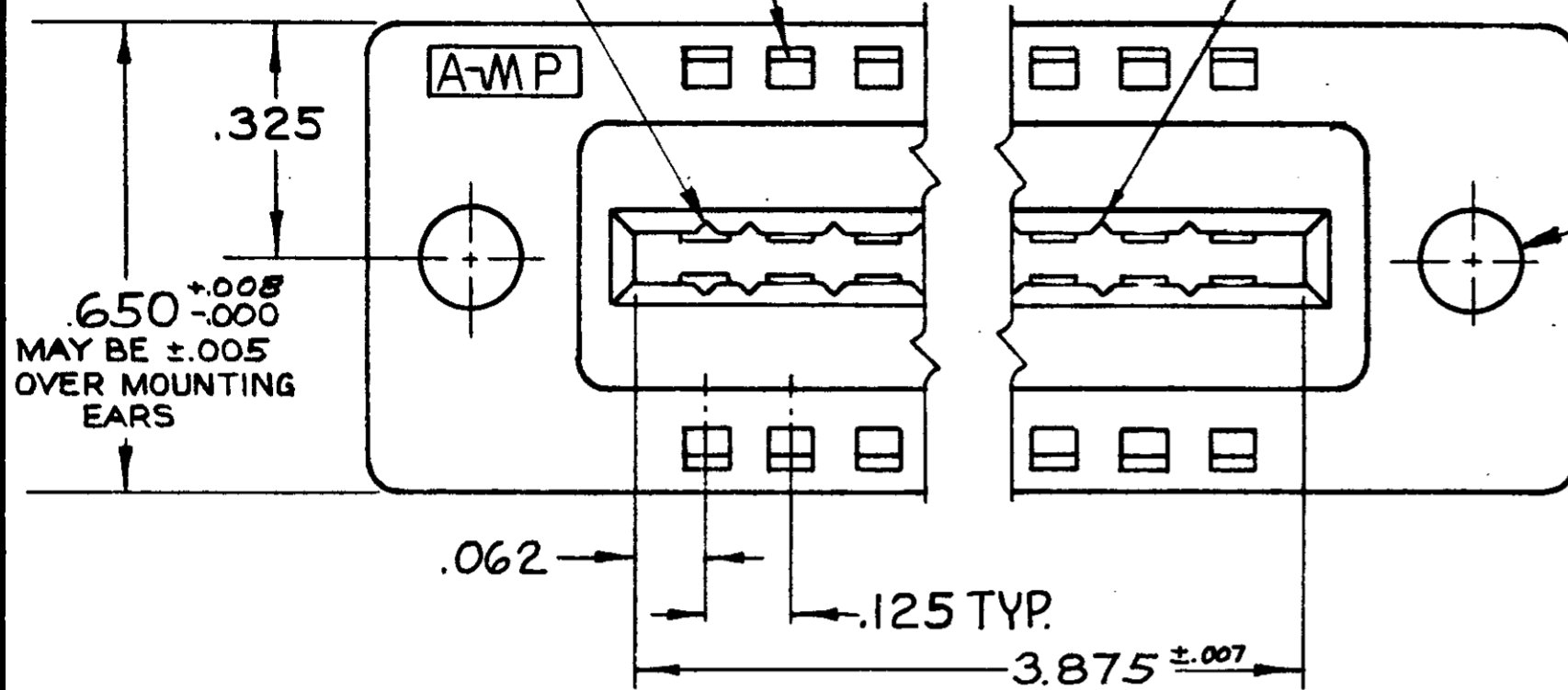


© 1964 BY AMP INCORPORATED. ALL RIGHTS RESERVED. AMP PRODUCTS COVERED BY PATENTS AND/OR PATENTS PENDING. APPROVED PER GOVT CONTRACT NO.

LOCATION FOR AMP-TAB FEMALE CONTACT

LOCATION FOR KEYING PLUG 582501-1 (FOR INTER-CONTACT KEYING)

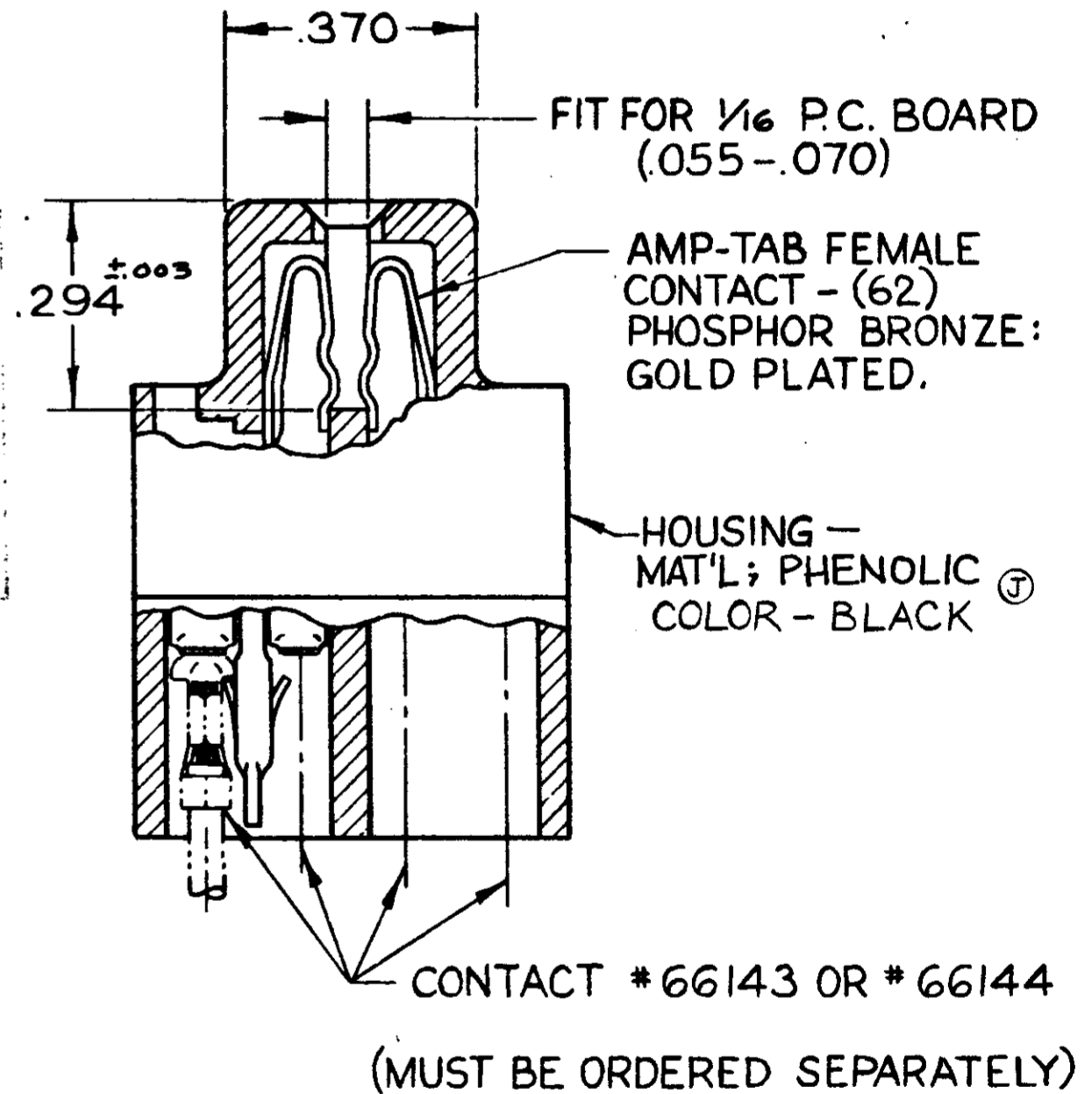
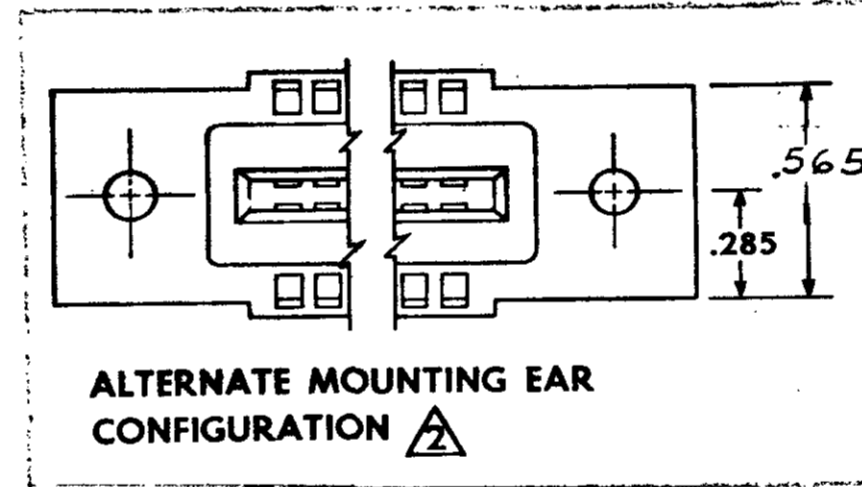
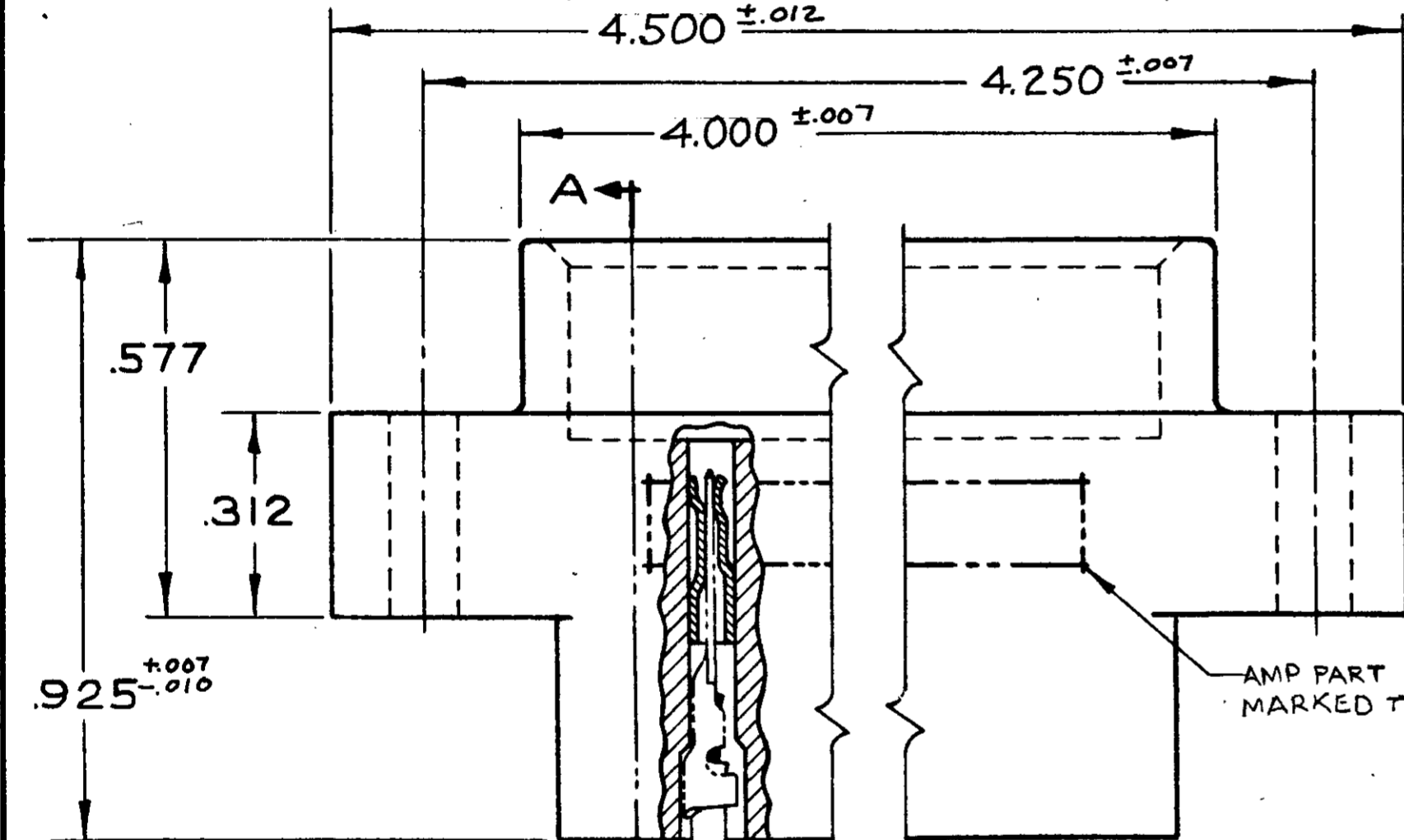
REVISIONS				
ZONE	LTR	DESCRIPTION	DATE	APPROVED
	N	ECO-08-020973	PY 11-08	JW



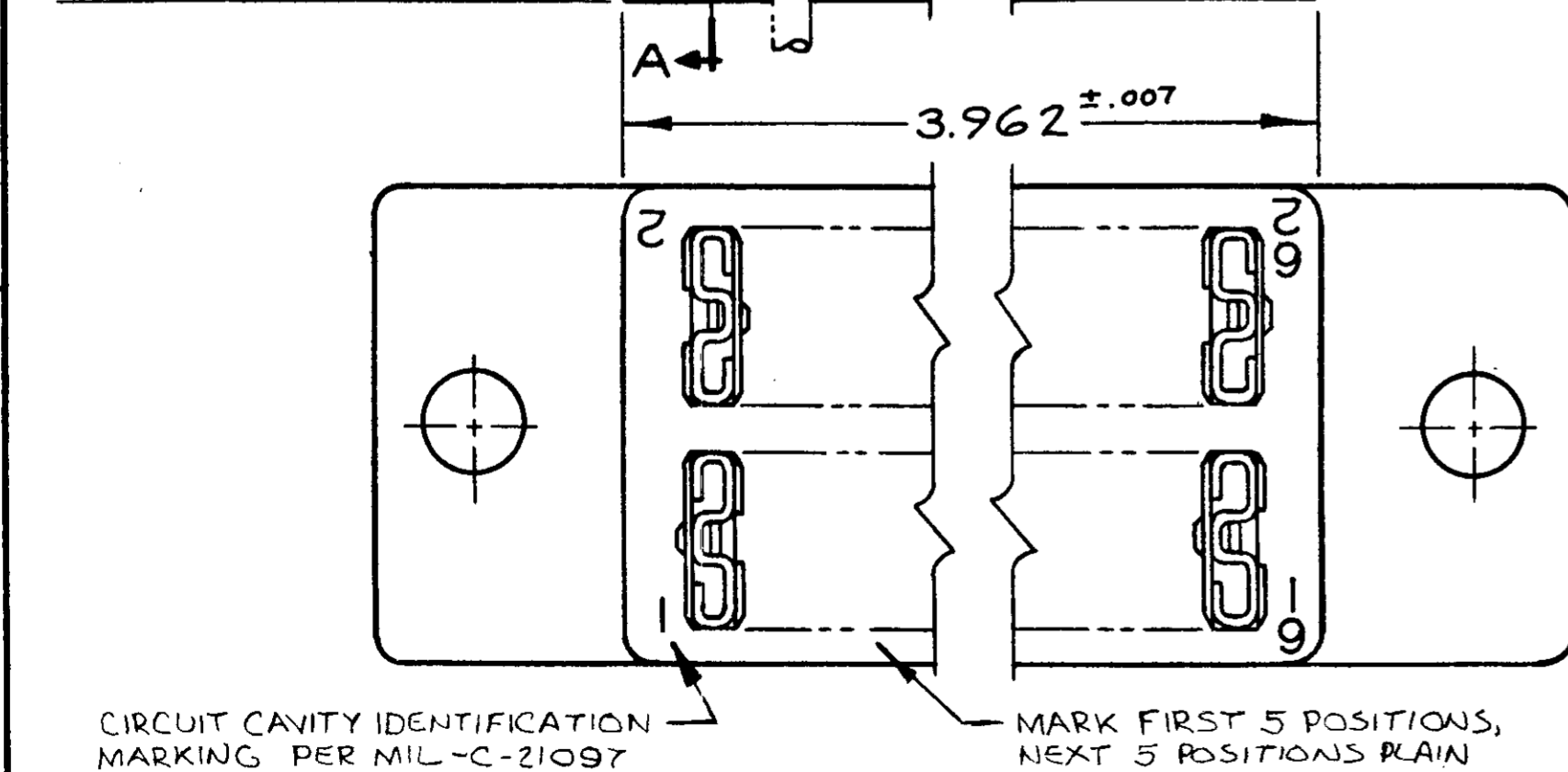
582722-1 I. AS SHOWN.

~~582722-2 SEE SHEET 2~~ **OBSOLETE**

- ▲ GROOVES FOR "ON CONTACT KEYING" AMP'S OPTION DEPENDING ON METHOD OF MANUFACTURE. FOR "ON CONTACT" KEYING USE KEYING PLUG P/N 583487-1. (MUST BE ORDERED SEPARATELY.)
- ▲ MOUNTING EAR CONFIGURATION AMP'S OPTION DEPENDS ON METHOD OF MANUFACTURE.
- 3. LASER MARKING ACCEPTABLE FOR ALL MARKING



SECTION A-A



UNLESS OTHERWISE SPECIFIED DIMENSIONS ARE IN INCHES TOLERANCES ON		CONTRACT NO.		AMP INCORPORATED HARRISBURG, PENNSYLVANIA	
FRACTIONS	DECIMALS	ANGLES	DR	DATE	NAME
±	±.005	±	J. Asich	5-13-67	31 POSITION AMP-TAB CONNECTOR .125 CENTERS QUAD
MATERIAL	HEAT TREAT	FINISH	CHK	DATE	SIZE
SEE CALLOUT	—	SEE CALLOUT	S. Verde	3/21/67	C
			DSGN ENGR	DATE	CODE IDENT NO
			APPD	DATE	NUMBER
			J. Kaufman	3/23/67	582722
			R. Shuman	3/28/67	REV
			OTHER APPD		N
					SCALE 4-1
					WT. CALC. ACTUAL SHEET

CUSTOMER DRAWING

NUMBER CUS. 582722