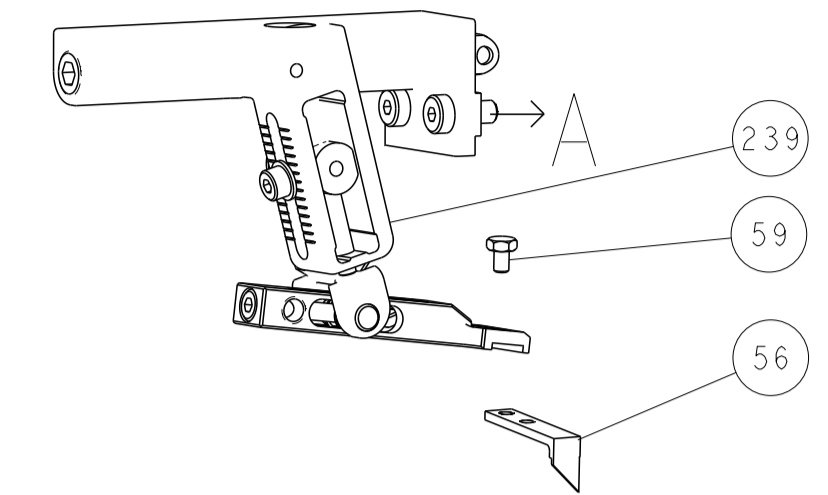


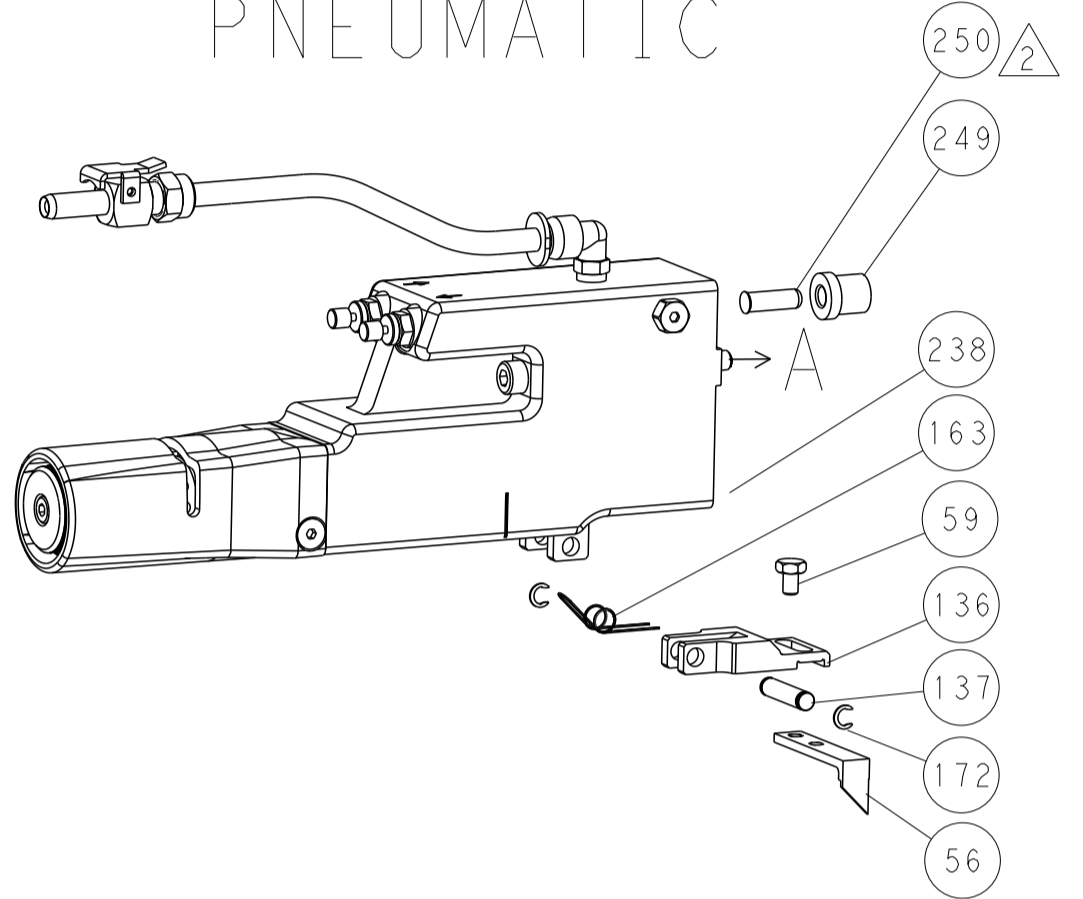


| LOC | DIST | REVISIONS |     |             |      |     |      |
|-----|------|-----------|-----|-------------|------|-----|------|
| A   | 66   | P         | LTN | DESCRIPTION | DATE | DWN | APVD |
| -   | -    | -         | -   | SEE SHEET 1 | -    | -   | -    |

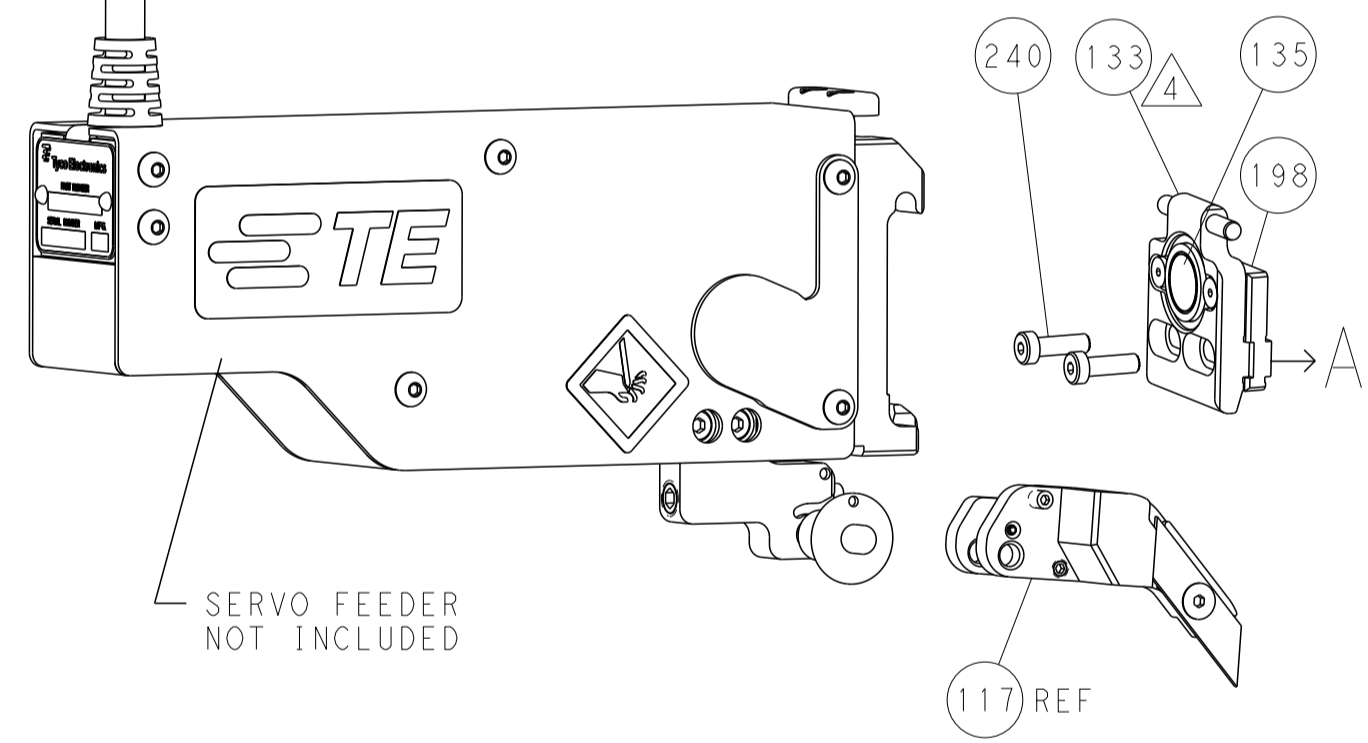
### FEED TYPE MECHANICAL



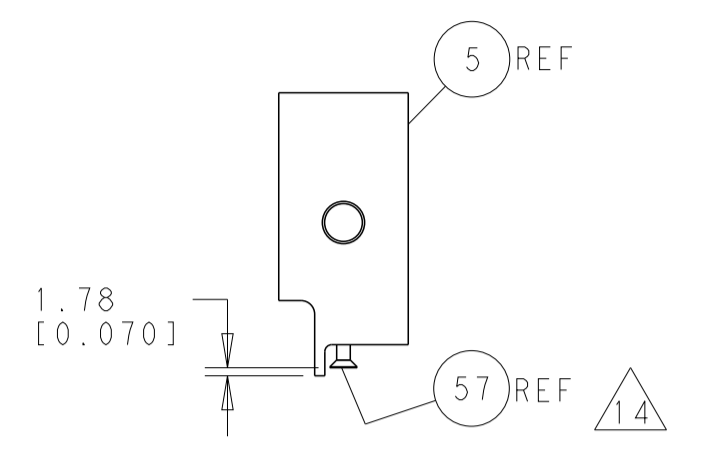
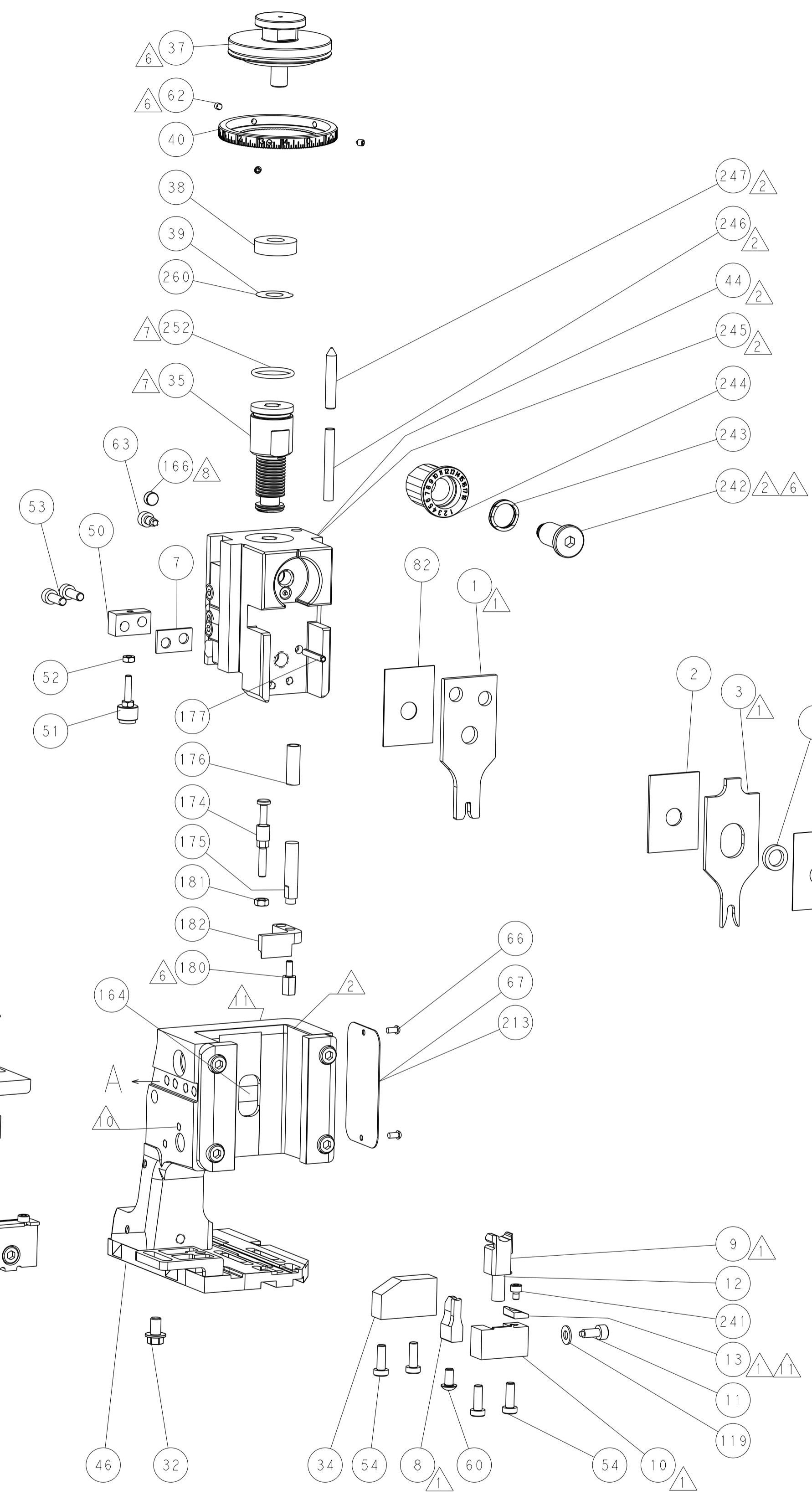
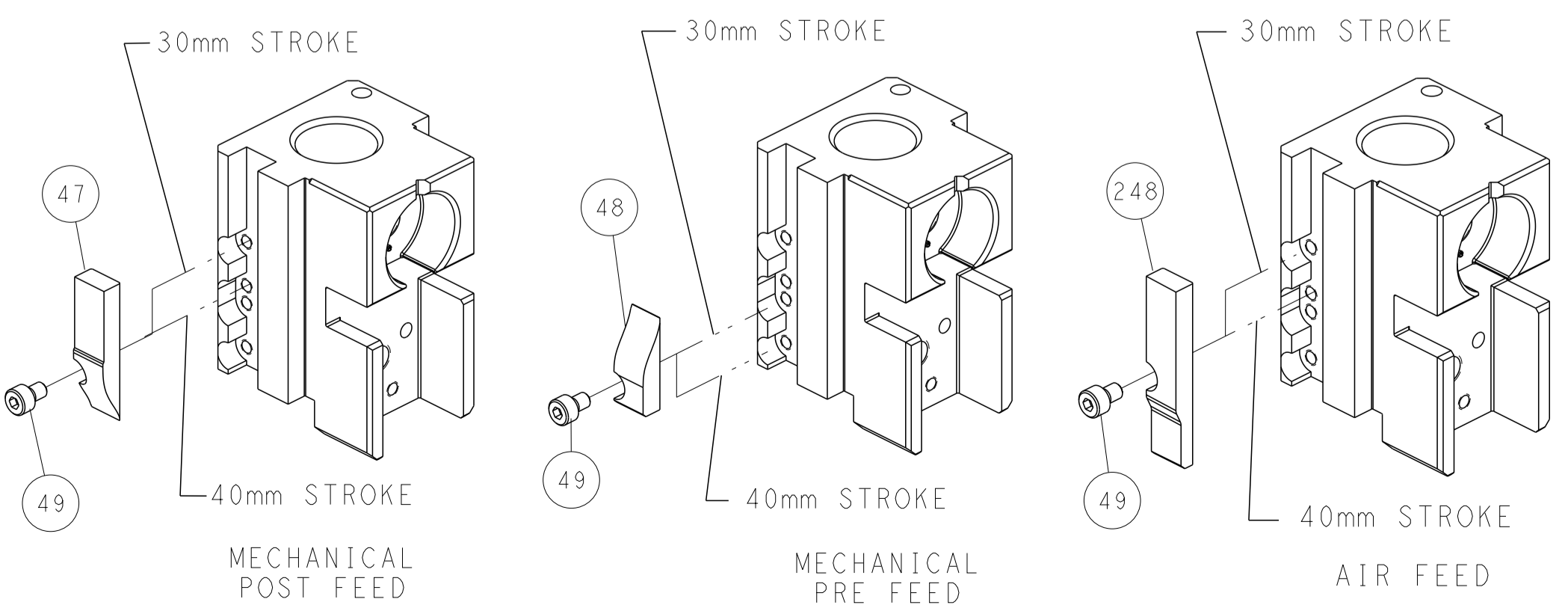
### PNEUMATIC



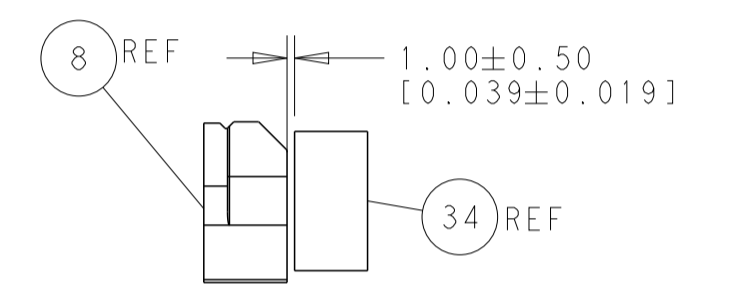
### SERVO LATCH PLATE



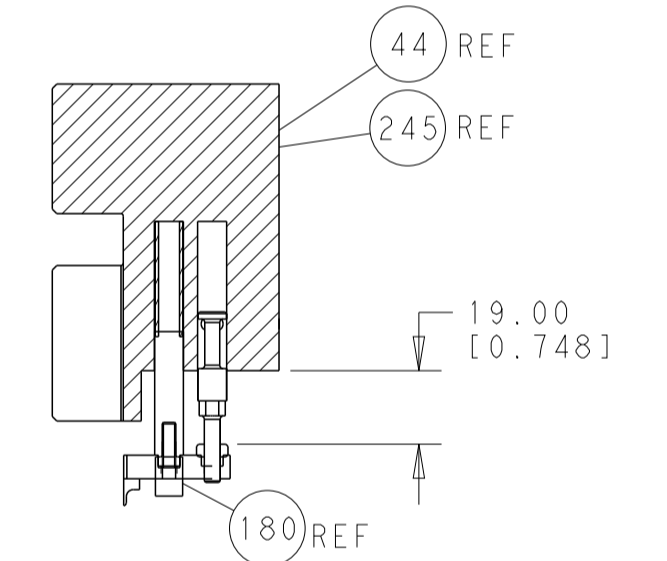
### CAM POSITIONS



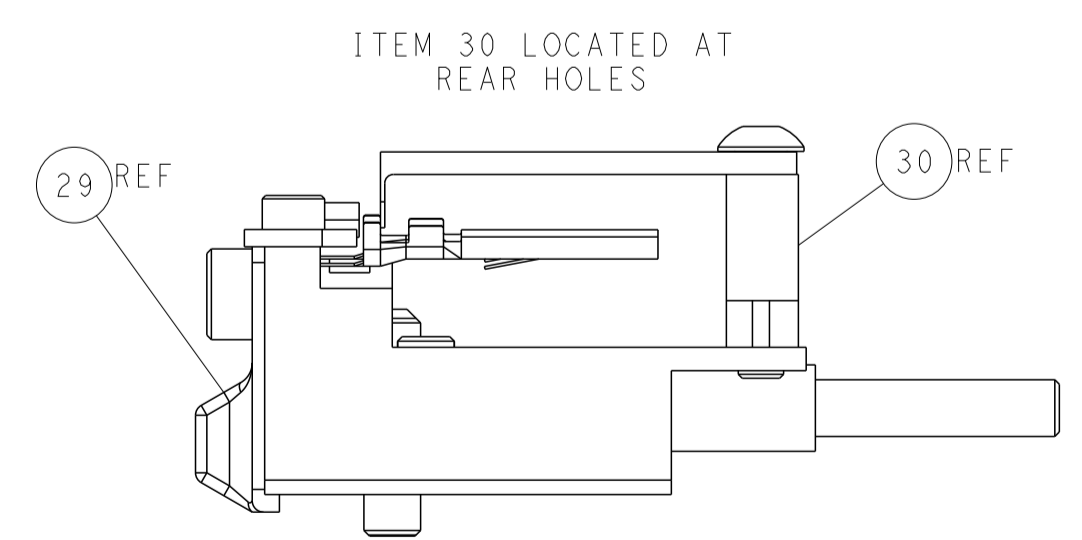
SHEAR DEPRESSOR DETAIL



TERMINAL SUPPORT LOCATION



HOLDDOWN SET-UP



FEED TRACK POSITION GUIDE BY INSULATION BARREL

**ATLANTIC VERSION**  
 Shown on sheets 1 of 4 & 2 of 4  
 (Pacific version shown on sheets 3 of 4 & 4 of 4)

|  |  |   |  |  |  |
|--|--|---|--|--|--|
| DIMENSIONS:<br>mm<br>  |  | TOLERANCES UNLESS OTHERWISE SPECIFIED:<br>0 PLC ±.5<br>1 PLC ±0.5<br>2 PLC ±0.13<br>3 PLC ±0.013<br>4 PLC ±0.001<br>ANGLES ±.0001<br>FINISH |  | DWN R. HUANG 17NOV2014<br>CHK L. ZHANG 17NOV2014<br>APVD J. GUO 17NOV2014<br>NAME Ocean Side Feed Applicator<br>SIZE CAGE CODE DRAWING NO. RESTRICTED TO<br>A1 00779 C=2266569<br>Customer Accessible Production Drawing SCALE 1:2 SHEET 2 of 4 REV A1 |  |
| THIS IS DRAWING IS UNPUBLISHED. RELEASED FOR PUBLICATION BY TYCO ELECTRONICS CORPORATION. ALL RIGHTS RESERVED. |  |   |  | TE Connectivity<br>Harrisburg, PA 17105-3608   |  |

THIS DRAWING IS UNPUBLISHED. RELEASED FOR PUBLICATION. COPYRIGHT 20 BY TYCO ELECTRONICS CORPORATION. ALL RIGHTS RESERVED. PACIFIC VERSION TERMINATOR INTERFACE ADAPTER. PART NUMBER, REVISION, DESCRIPTION, FEED TYPE, OBSOLETE. APPLICATOR DATA: CRIMP SIZE TYPE, WIRE INSUL, APPLICATOR INSTRUCTIONS.

REVISIONS table with columns for P, L, M, DESCRIPTION, DATE, DWN, APVD.

TERMINAL DATA: YAZAKI TERMINAL YAZAKI CRIMP SPECIFICATION. WIRE STRIP LENGTH, INSULATION DIAMETER RANGE, TERMINAL APPLICATION SPECIFICATION, TERMINALS APPLIED table.

TERMINAL DATA: YAZAKI TERMINAL YAZAKI CRIMP SPECIFICATION. WIRE STRIP LENGTH, INSULATION DIAMETER RANGE, TERMINAL APPLICATION SPECIFICATION, TERMINALS APPLIED table.

WIRE SIZE, CRIMP HEIGHT mm [INCH], CRIMP HEIGHT REFERENCE SETTING. Table with 3 columns.

WIRE SIZE, CRIMP HEIGHT mm [INCH], CRIMP HEIGHT REFERENCE SETTING. Table with 3 columns.

- RECOMMENDED SPARE PARTS, GREASE BEARING SURFACES LIGHTLY, LUBRICATE DAILY PER THE APPLICATOR INSTRUCTION SHEET SUPPLIED WITH THE APPLICATOR.

\*WARNING ON INSTALLATION, SET WIRE DISC, ITEM 40 TO LARGEST WIRE SIZE SETTING. USE OF SETTINGS BELOW MINIMUM REQUIRED CRIMP HEIGHT SETTING WILL CAUSE DAMAGE TO CRIMP TOOLING. THIS APPLICATOR APPLIES TERMINAL WITH A SEAL. APPLY TORQ-SEAL IN ALLEN SOCKET TO FILL HOLE AFTER FLAT HD HAS BEEN ADJUSTED TO CORRECT HEIGHT AT QUALIFICATION.

Table with 3 columns: QTY, PART NO, DESCRIPTION, ITEM NO. Includes items like FINE ADJUST HEAD ASM, PUSH ROD, AIR FEED, etc.

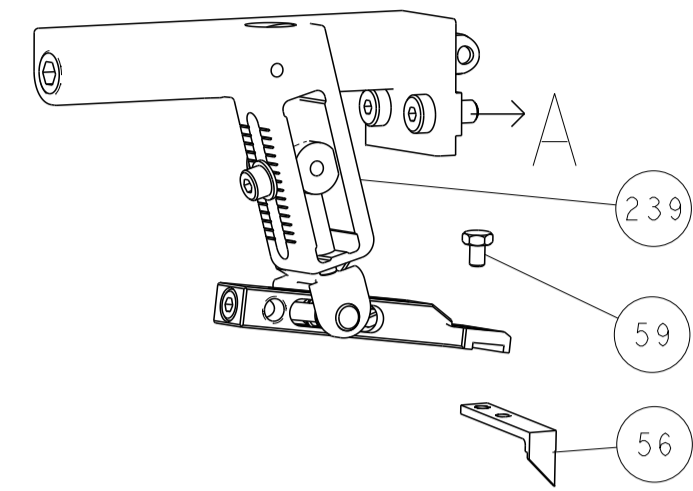
Main BOM table with 3 columns: QTY, PART NO, DESCRIPTION, ITEM NO. Includes items like WASHER, WAVE SPRING, CREST-TO-CREST, RETAINER, INSULATION DIAL, SCR, SKT HD CAP M3 X 4.0, etc.

PACIFIC VERSION Shown on sheets 3 of 4 & 4 of 4 (Atlantic version shown on sheets 1 of 4 & 2 of 4)

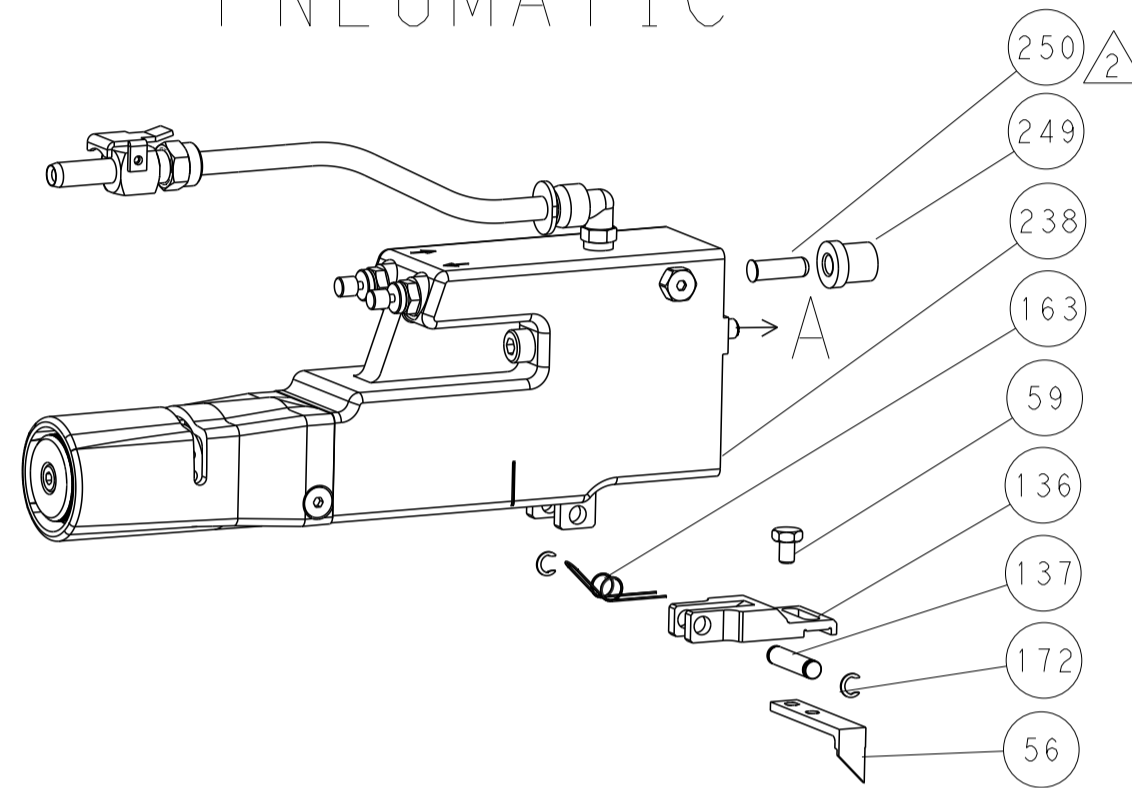
Technical drawing footer containing dimensions, tolerances, material, and manufacturer information (STE TE Connectivity).

| LOC |    | DIST |     | REVISIONS   |      |     |      |
|-----|----|------|-----|-------------|------|-----|------|
| A   | 66 | P    | LTM | DESCRIPTION | DATE | OWN | APVD |
|     |    | -    |     | SEE SHEET 1 |      |     |      |

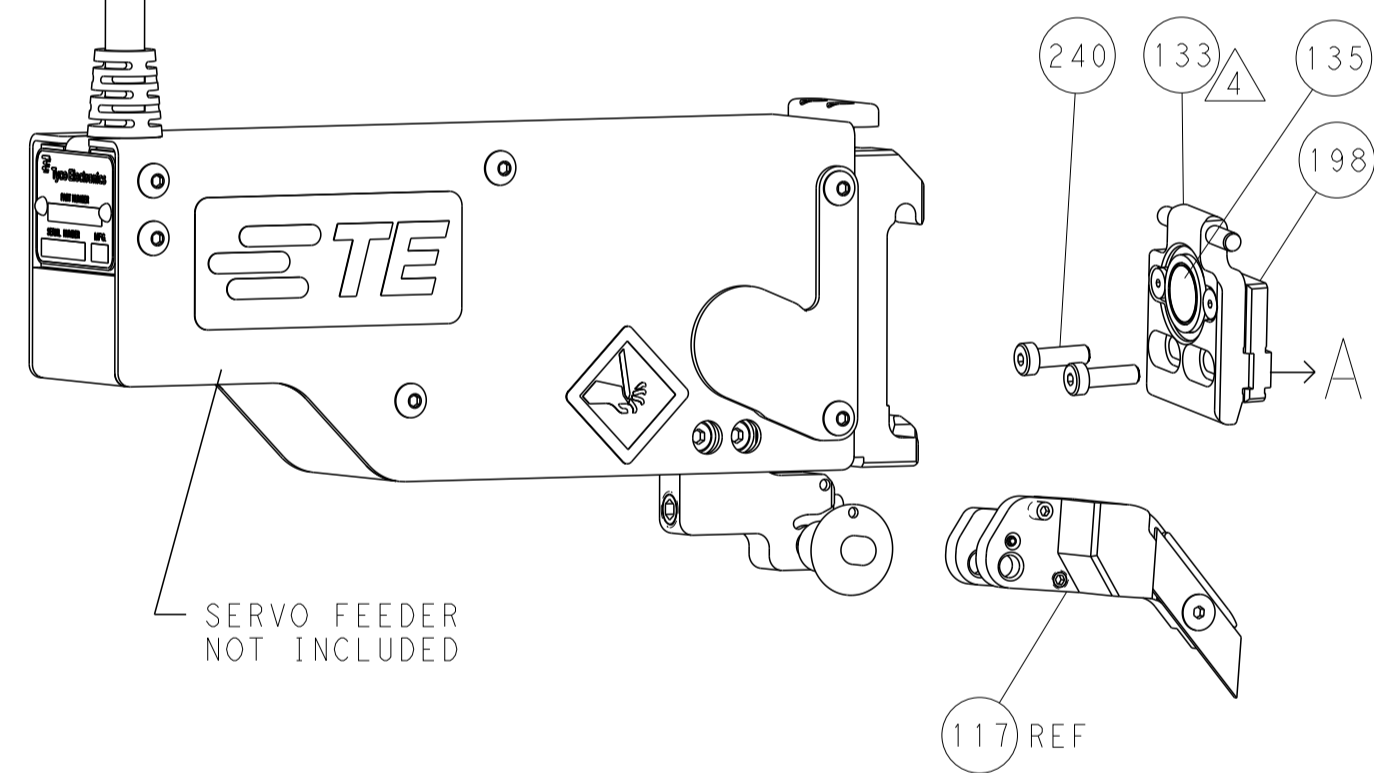
# FEED TYPE MECHANICAL



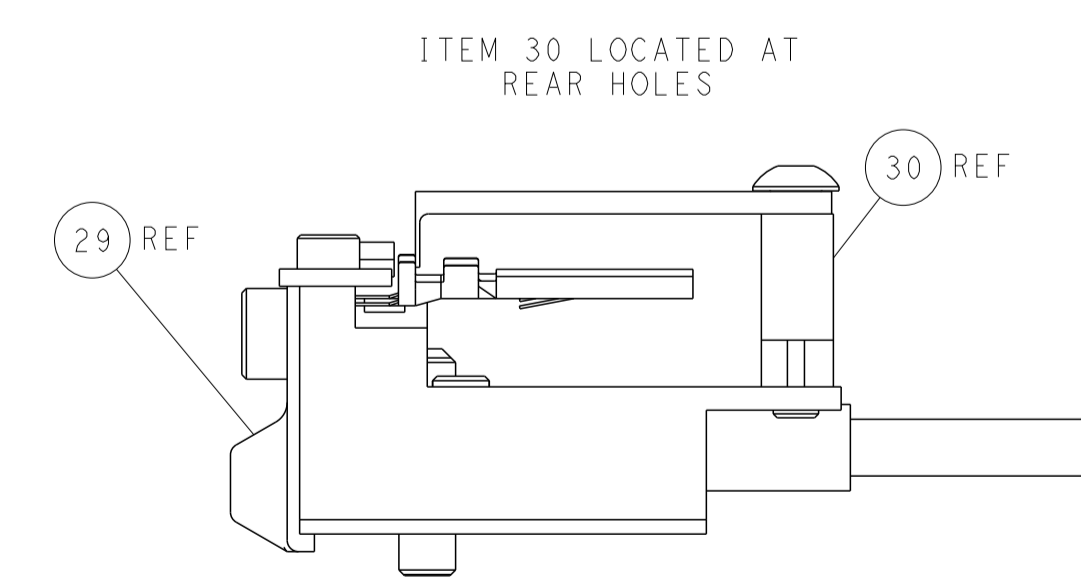
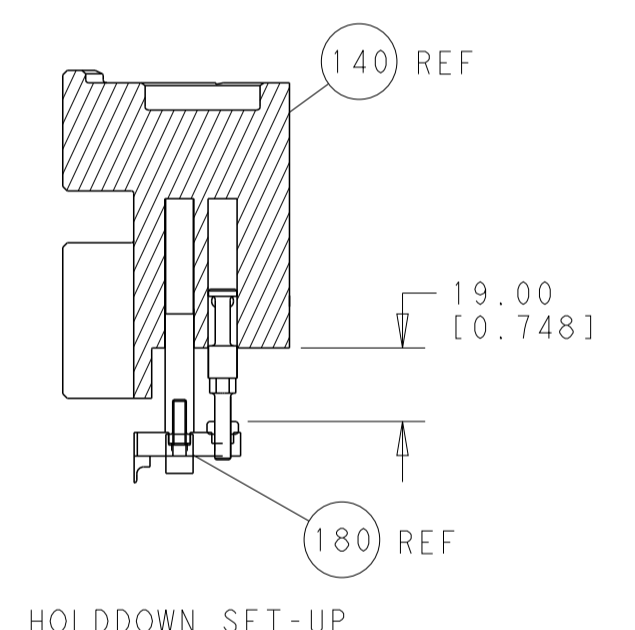
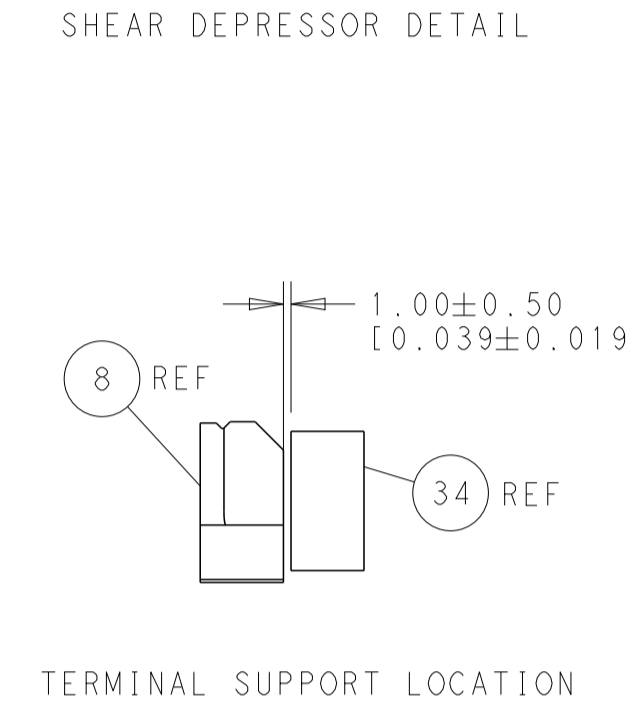
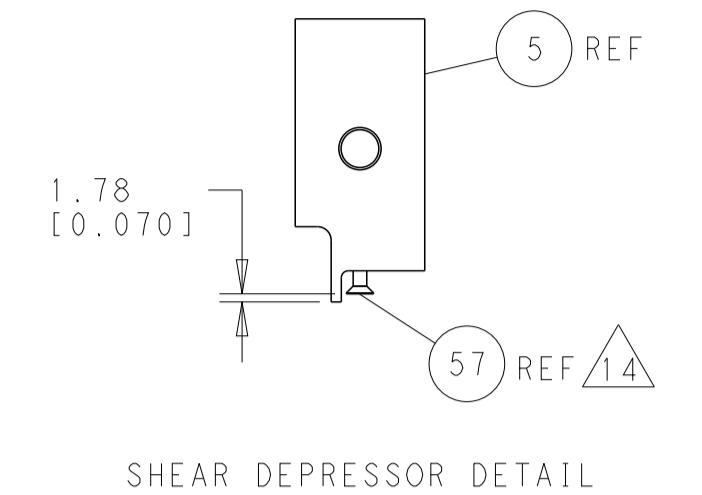
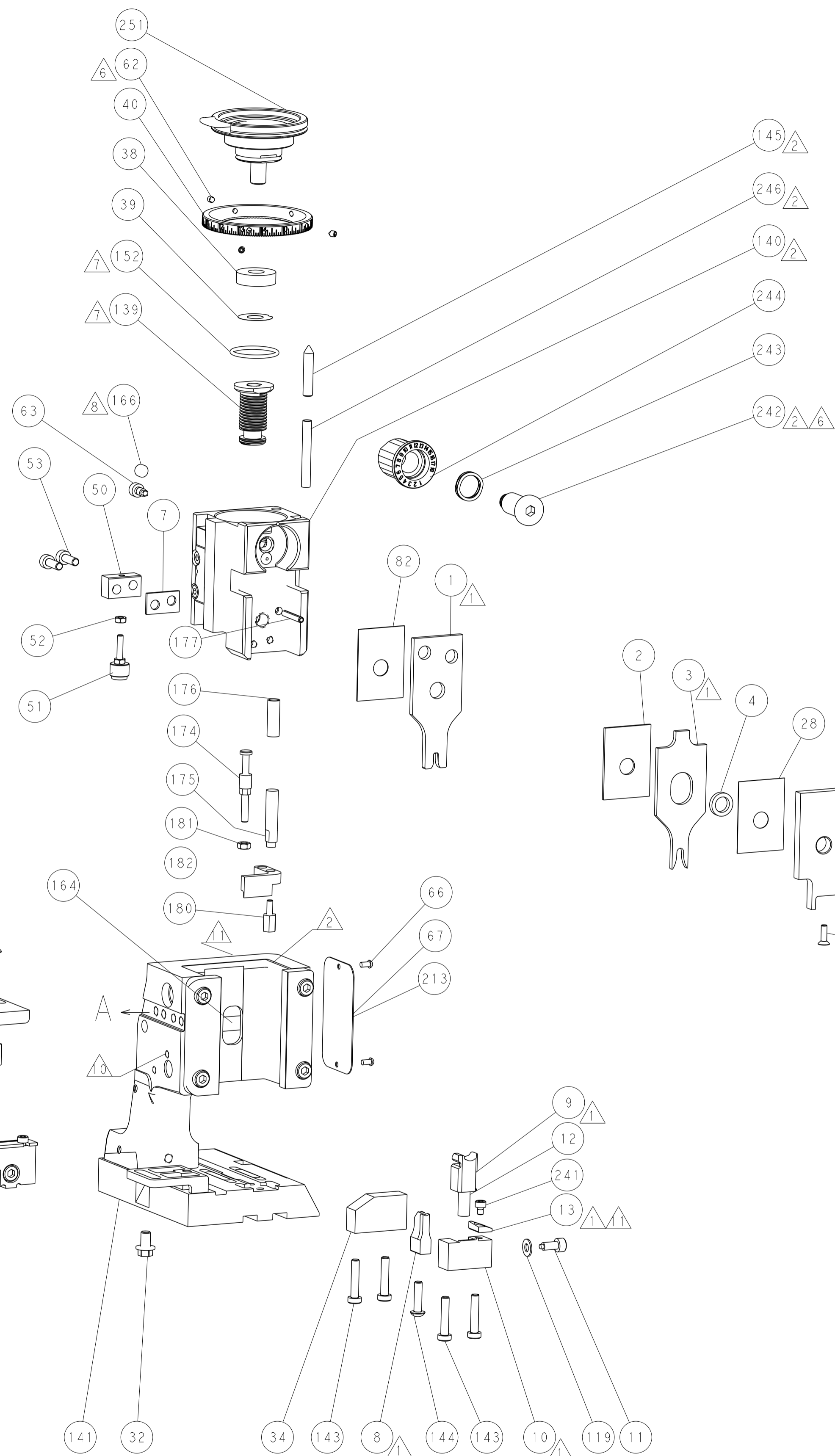
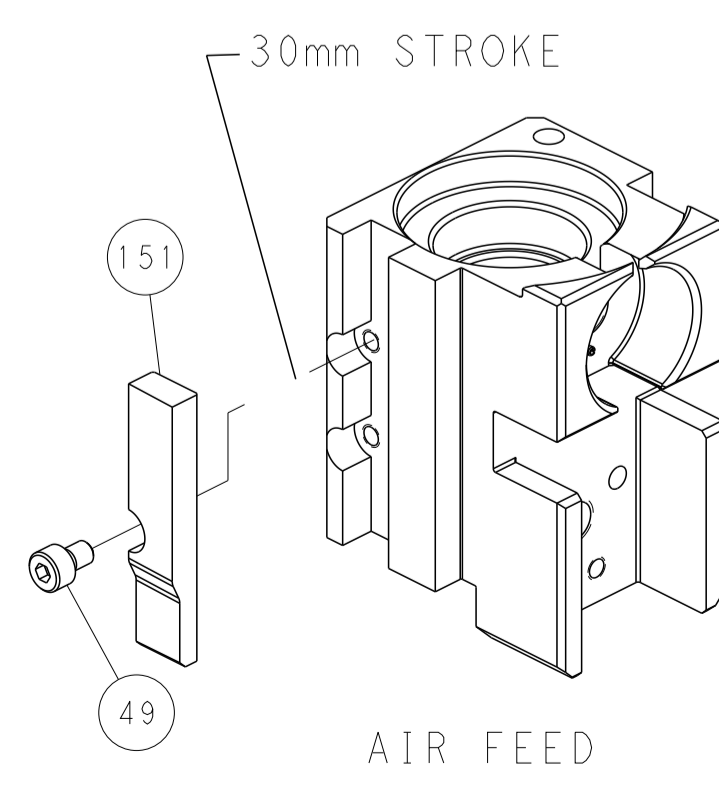
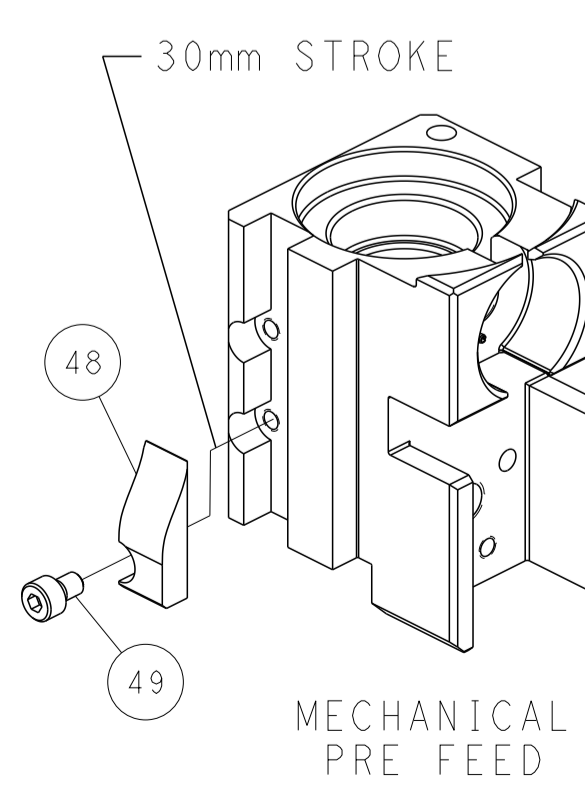
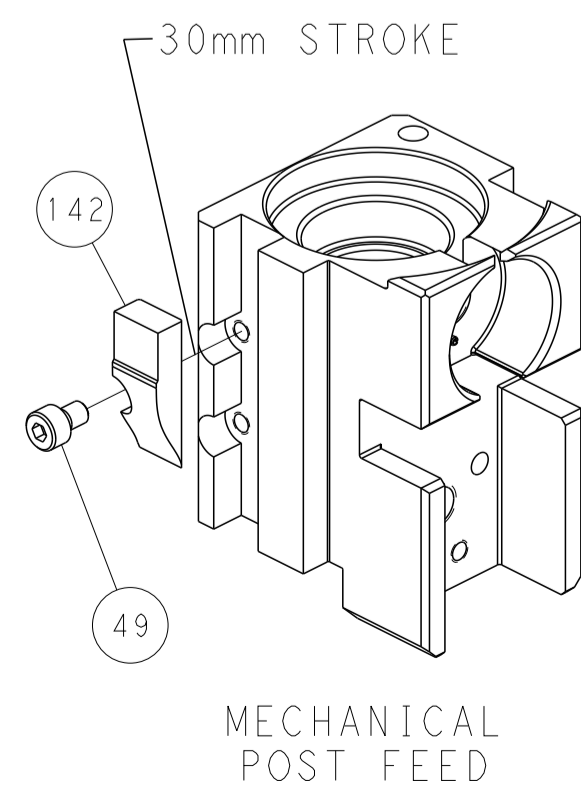
# PNEUMATIC



# SERVO LATCH PLATE



# CAM POSITIONS



**PACIFIC VERSION**  
 Shown on sheets 3 of 4 & 4 of 4  
 (Atlantic version shown on sheets 1 of 4 & 2 of 4)

|  |              |  |                |                         |  |
|--|--------------|--|----------------|-------------------------|--|
| DIMENSIONS:                            |              | TOLERANCES UNLESS OTHERWISE SPECIFIED: |                | OWN: H. HUANG 17NOV2014 | TE Connectivity<br>Harrisburg, PA 17105-3608 |
| mm                                     | 0 PLC ±0.5   | 1 PLC ±0.5                             | 2 PLC ±0.13    | CHK: L. ZHANG 17NOV2014 |  |
|  | 3 PLC ±0.013 | 4 PLC ±0.001                           | ANGLES ±0.0001 | APVD: H. GUO 17NOV2014  | NAME: Ocean Side Feed Applicator             |
| MATERIAL:                              | FINISH:      | WEIGHT:                                | SCALE: 1:2     | SIZE: A1                | CAGE CODE: 00779                             |
| Customer Accessible Production Drawing |              |  |                | DRAWING NO: C=2266569   | RESTRICTED TO: -                             |