

Han K 4/0 Pin Male Insert

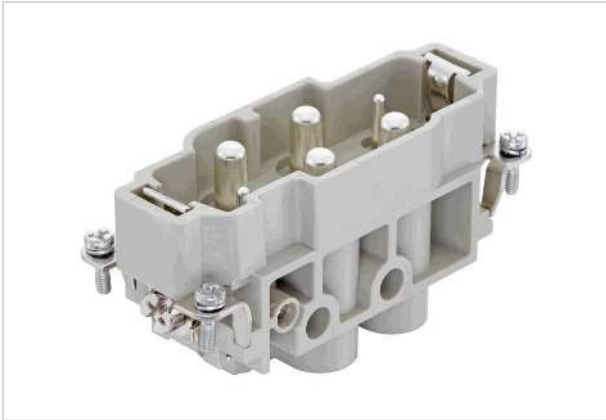


Image is for illustration purposes only. Please refer to product description.

| | |
|--------------------|---|
| Part number | 09 38 006 2611 |
| Specification | Han K 4/0 Pin Male Insert |
| HARTING eCatalogue | https://b2b.harting.com/09380062611 |

Identification

| | |
|----------------|------------------------|
| Category | Inserts |
| Series | Han-Com [®] |
| Identification | Han [®] K 4/0 |

Version

| | |
|--------------------|-------------------|
| Termination method | Screw termination |
| Gender | Male |
| Size | 16 B |
| Number of contacts | 4 |
| PE contact | Yes |

Technical characteristics

| | |
|---------------------------|----------------------------|
| Conductor cross-section | 1.5 ... 16 mm ² |
| Rated current | 80 A |
| Rated voltage | 830 V |
| Rated impulse voltage | 8 kV |
| Pollution degree | 3 |
| Rated current acc. to UL | 80 A |
| Rated voltage acc. to UL | 600 V |
| Rated current acc. to CSA | 80 A |
| Rated voltage acc. to CSA | 300 V |
| Insulation resistance | >10 ¹⁰ Ω |
| Contact resistance | ≤0.3 mΩ |



Pushing Performance
 Since 1945

Technical characteristics

| | |
|----------------------|------------------------------|
| Stripping length | 14 mm |
| Tightening torque | 1.2 Nm @ 1.5 mm ² |
| | 2 Nm @ 2.5 mm ² |
| | 3 Nm @ 4 mm ² |
| | 3 Nm @ 6 mm ² |
| | 3 Nm @ 10 mm ² |
| | 3 Nm @ 16 mm ² |
| Limiting temperature | -40 ... +125 °C |
| Mating cycles | ≥500 |

Material properties

| | |
|---|---|
| Material (insert) | Polycarbonate (PC) |
| Colour (insert) | RAL 7032 (pebble grey) |
| Material (contacts) | Copper alloy |
| Surface (contacts) | Silver plated |
| Material flammability class acc. to UL 94 | V-0 |
| RoHS | compliant with exemption |
| RoHS exemptions | 6(a) / 6(a)-I: Lead as an alloying element in steel for machining purposes and in galvanised steel containing up to 0,35 % lead by weight / Lead as an alloying element in steel for machining purposes containing up to 0,35 % lead by weight and in batch hot dip galvanised steel components containing up to 0,2 % lead by weight |
| | 6(c): Copper alloy containing up to 4 % lead by weight |
| ELV status | compliant with exemption |
| China RoHS | 50 |
| REACH Annex XVII substances | Not contained |
| REACH ANNEX XIV substances | Not contained |
| REACH SVHC substances | Yes |
| REACH SVHC substances | Lead |
| ECHA SCIP number | 5dbb3851-b94e-4e88-97a1-571845975242 |
| California Proposition 65 substances | Yes |
| California Proposition 65 substances | Lead Nickel |
| Fire protection on railway vehicles | EN 45545-2 (2020-08) |
| Requirement set with Hazard Levels | R22 (HL 1-3) |
| | R23 (HL 1-3) |



Pushing Performance
Since 1945

Specifications and approvals

| | |
|----------------|--|
| Specifications | IEC 60664-1 IEC 61984 |
| Approvals | DNV GL |
| UL / CSA | UL 1977 ECBT2.E235076 CSA-C22.2 No. 182.3 ECBT8.E235076 |

Commercial data

| | |
|--------------------------------|---|
| Packaging size | 1 |
| Net weight | 112.54 g |
| Country of origin | Romania |
| European customs tariff number | 85366990 |
| GTIN | 5713140056237 |
| eCl@ss | 27440205 Contact insert for industrial connectors |