

REVISIONS				
P.	LTN.	DESCRIPTION	DATE	APVD.
B		REVISED PER ECR-20-100642	23SEP2022	M, G, D, Z

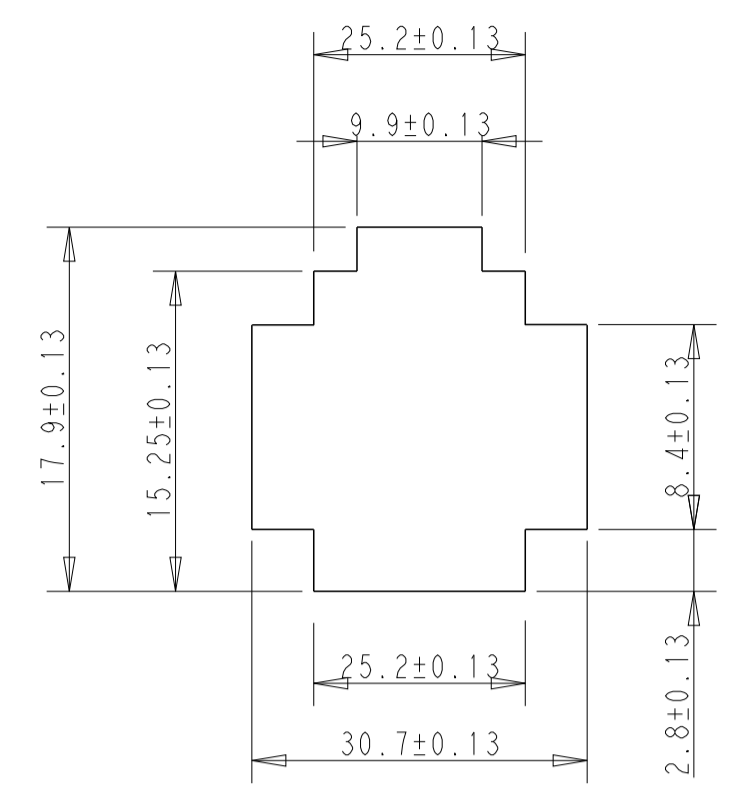
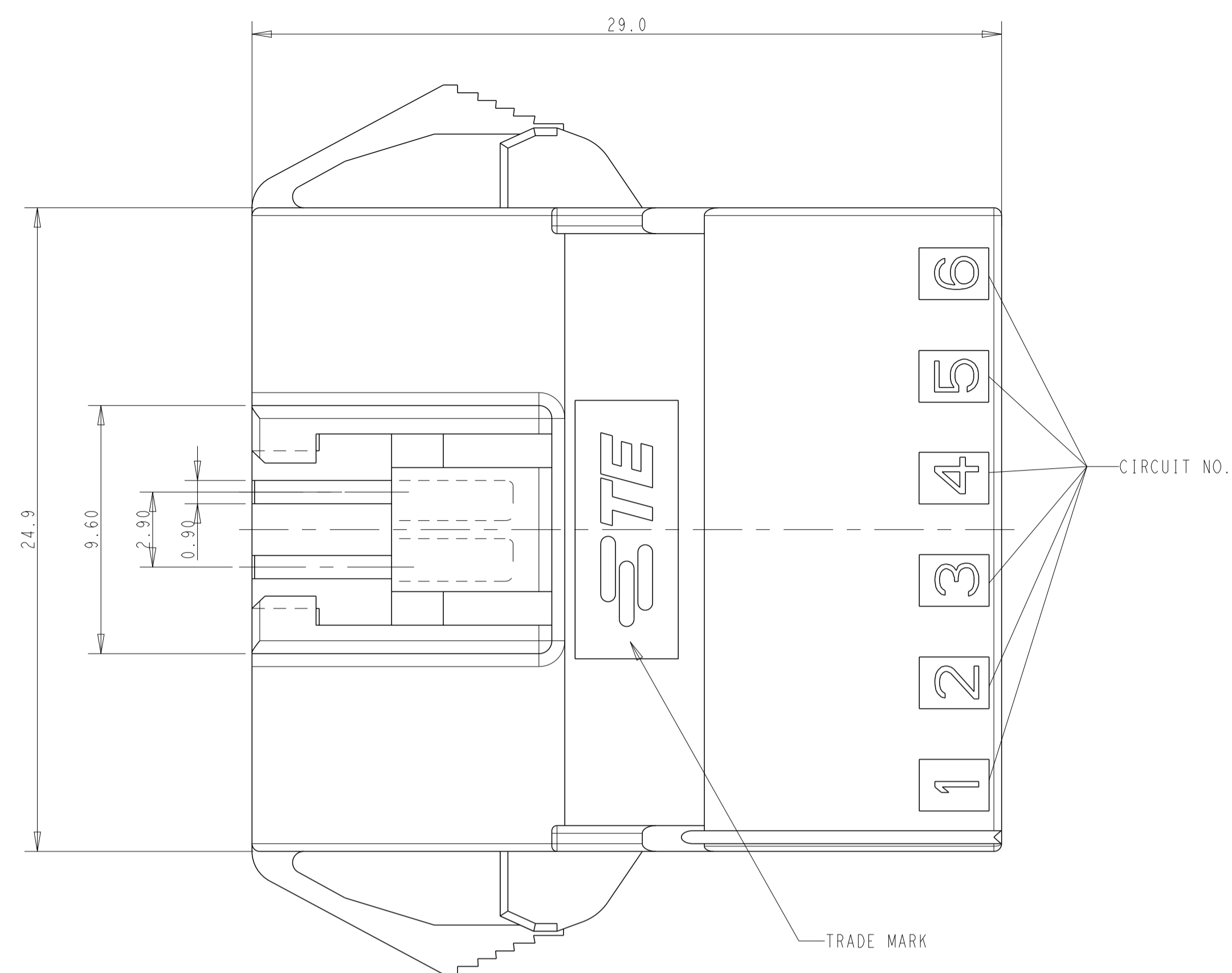
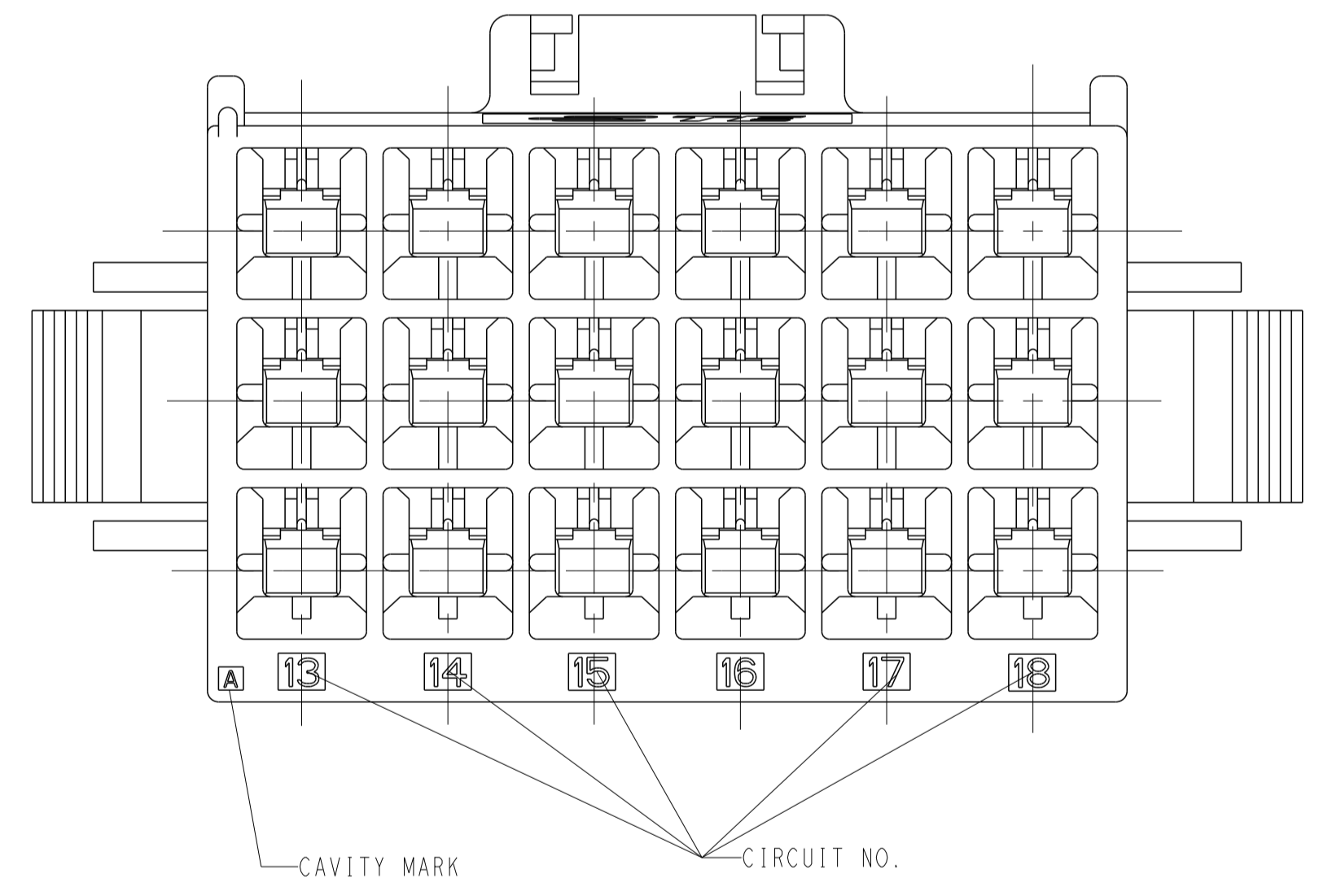
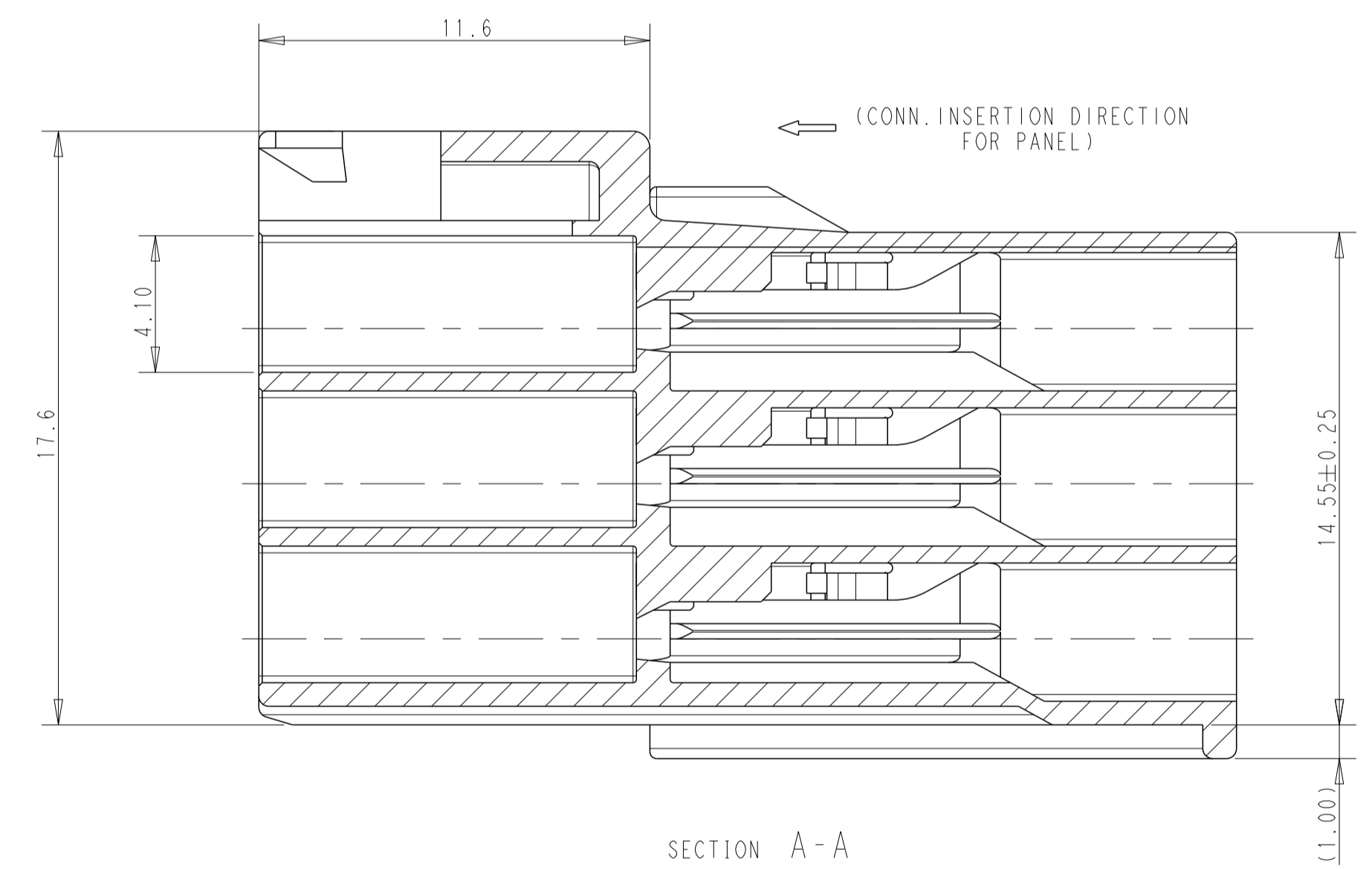
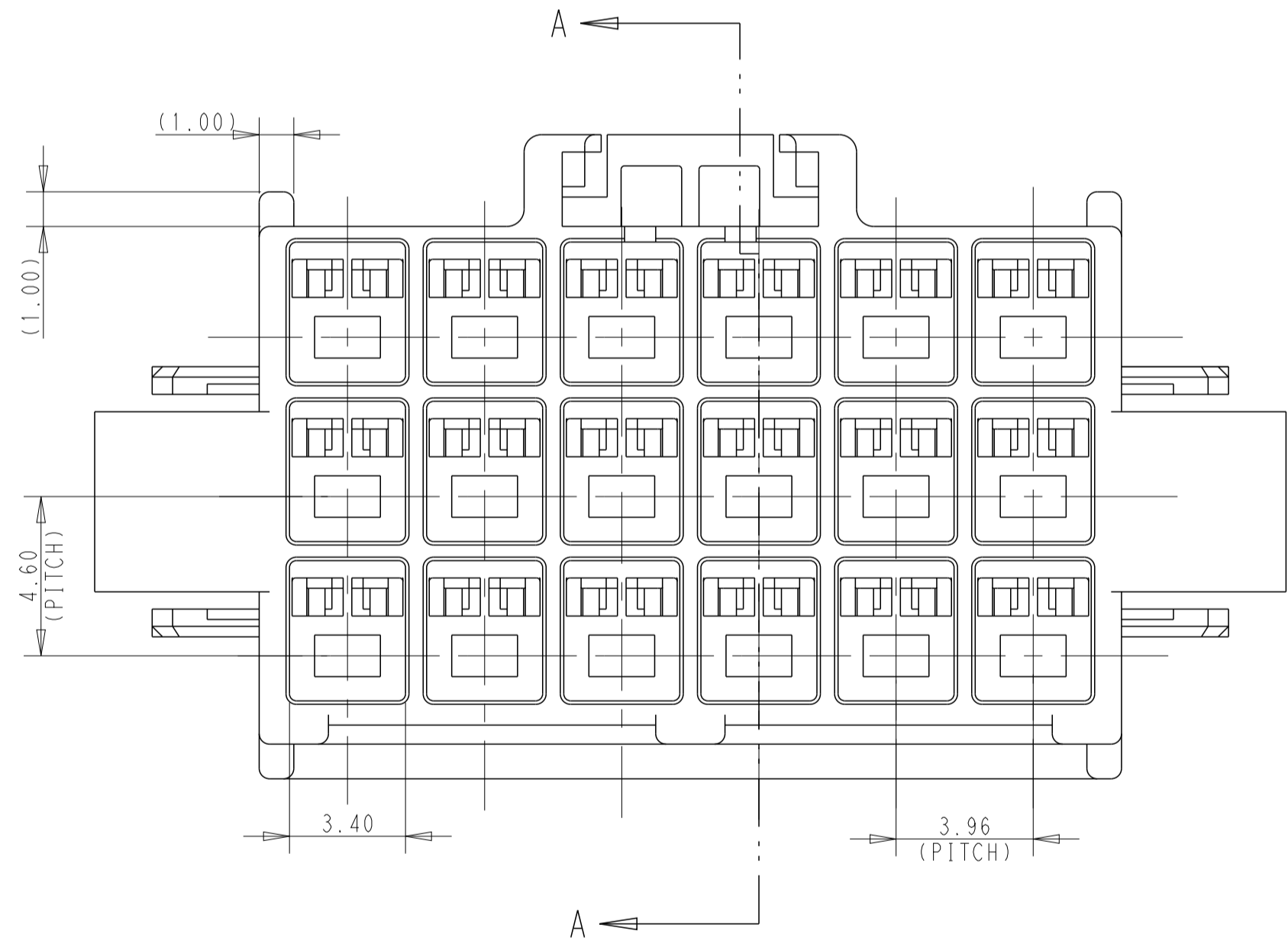


FIG 1
(RECOMMENDED PANEL OPENING DIMENSION)



- NOTES:
- 1 APPLICABLE CONTACT P/N:
TAB CONTACT: 175150- (20-16 AWG)
175149- (26-22 AWG)
 - 2 MATING CONN. P/N:
PLUG HSG: 176280-
REC CONTACT: 175152- (20-16AWG)
175151- (20-22AWG)
 - 3 INSTRUCTION SHEET: IS-503J.
 - 4 APPLICABLE PANEL THICKNESS, 0.8-2.0 (SEE FIGURE 1)
 - 5 INSERT CONN. FROM PRESS DIRECTION SIDE FOR METAL PANEL
 - 6 EDGE OF THICKNESS WAY MUST NOT ROUND FOR MOLDED PANEL



DISCONTINUED	18	BLACK	176301-9
DISCONTINUED	18	BLUE	176301-6
DISCONTINUED	18	YELLOW	176301-4
DISCONTINUED	18	RED	176301-2
	18	NATURAL	176301-1
	POS.	COLOR	PART NUMBER

THIS DRAWING IS A CONTROLLED DOCUMENT.

DIMENSIONS:	TOLERANCES UNLESS OTHERWISE SPECIFIED:	DWN Y. NARISAWA 19NOV90	CHK Y. FUJITA 19NOV90	APVD N. ONQUE 19NOV90	NAME AMP UNIVERSAL POWER CONN 3.96 MM PITCH CAP HOUSING 18 POS (PANEL MOUNT)
mm	0 PLC ±0.25 1 PLC ±0.2 2 PLC ±0.2 3 PLC ±0.2 4 PLC ±0.2 ANGLES ±3° FINISH	MATERIAL 6/6 NYLON (UL94 V-0)	WEIGHT	SIZE 114-5142	RESTRICTED TO
		CUSTOMER DRAWING		SCALE 6:1	SHEET 1 OF 1 REV B

TE Connectivity

00779 C=176301