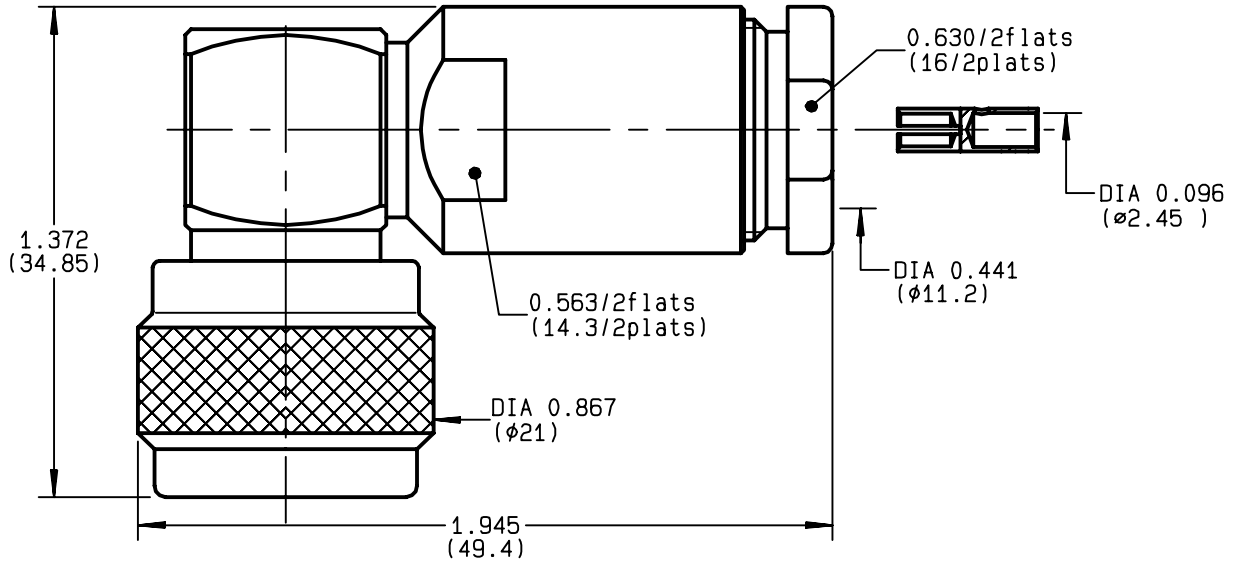


**RIGHT ANGLE PLUG CLAMP TYPE  
CABLE 10+11/50 S+D**

**R161.168.000**  
**SERIES N**



NOMINAL IMPEDANCE	<b>50</b> Ω	CABLES : <b>KX 4</b>
FREQUENCY RANGE	<b>0-11</b> GHz	<b>KX 8</b>
TEMPERATURE RATING	<b>-55/+155</b> °C	<b>RG 11</b>
V.S.W.R	<b>1.50</b> + x F(GHz)Maxi	<b>RG 144</b>
RF INSERTION LOSS	<b>0.07</b> √F(GHz) dB Maxi	<b>RG 165</b>
VOLTAGE RATING	<b>1400</b> Veff Maxi	<b>RG 213</b>
DIELECTRIC WITHSTANDING VOLTAGE	<b>2500</b> Veff Mini	<b>RG 214</b>
INSULATION RESISTANCE	<b>5000</b> MΩMini	<b>RG 216</b>
HERMETIC SEAL	<b>NA</b> Atm.cm <sup>3</sup> /s	<b>RG 225</b>
LEAKAGE (pressurized only)	<b>NA</b>	<b>RG 393</b>
MECHANICAL DURABILITY	<b>500</b> Cycles	OTHERS CHARACTERISTICS
WEIGHT	<b>69.9</b> gr	CABLE RETENTION <b>200</b> N Mini
SPECIFICATION		CENTER CONTACT RETENTION
		Axial force - mating end <b>68</b> N Mini
		Axial force - opposite end <b>68</b> N Mini
		Torque <b>NA</b> cm.N Mini
		RECOMMENDED TORQUES
		Mating <b>130</b> cm.N
		Panel nut <b>NA</b> cm.N
		Clamp nut <b>500</b> cm.N

CONNECTOR PARTS	MATERIALS	FINISH	(all values are given in micrometers)
BODY	BRASS	BBR 2	
OUTER CONTACT	BRASS	BBR 2	
CENTER CONTACT	BRASS	GOLD 0.5 OVER NICKEL 2	
INSULATOR	PTFE	-	
GASKET	SILICONE RUBBER	-	
OTHERS PIECES	BRASS	BBR 2	

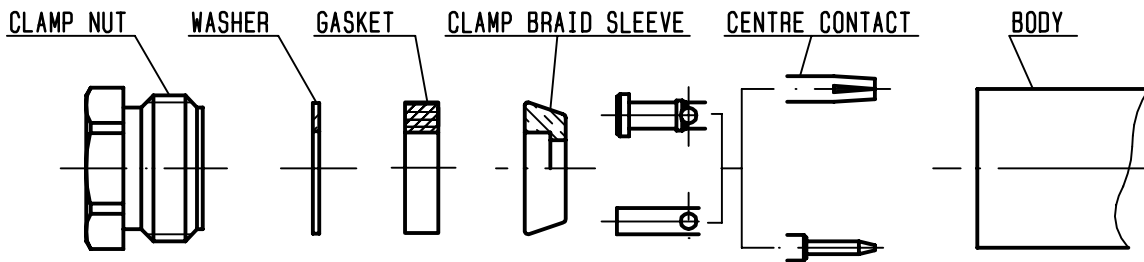
BONMINI	ISSUE	CREATION DATE	FILE PART-NUMBER	 <b>RADIALL</b> ®
	<b>9812E01</b>	<b>24/04/1993</b>	<b>EPC 96-07</b>	

The information given here is subject to change without notice. Design changes may be in order to improve the product .



**R161.168.000**

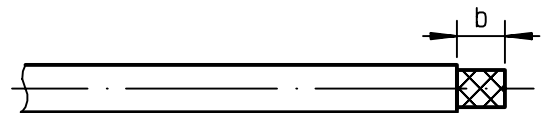
ISSUE **9812E01** SERIES **N**



①

Strip the cable .

-  
-  
-  
-



Stripping	a	b	c	d	e
inch	0.157	0.394	0	0	0.098
mm	4	10			2.5

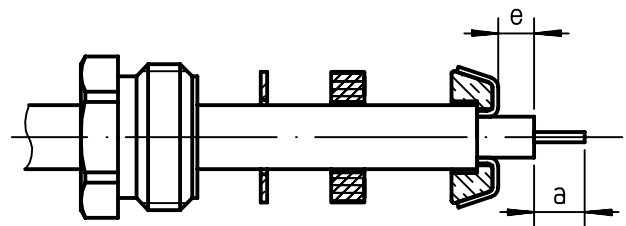
②

Slide the clamp nut , the washer and the gasket onto the cable .

Slide clamp braid sleeve over braid .  
Fold back braid and trim off surplus braid .

Trim back dielectric as shown .

-

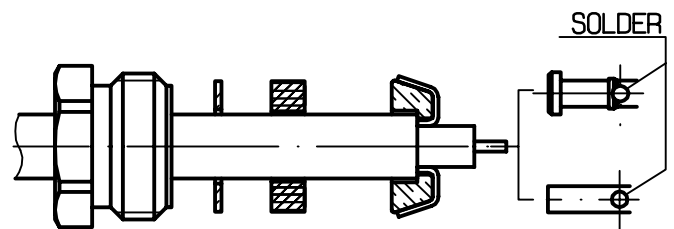


③

Solder or crimp the center contact on the center conductor .

Crimping tool R 282 231 000 ( Hex. : .10 ) or crimping tool R 282 293 000 ( M22520/5-01 ) + dies R 282 235 116 ( Y 116 DANIELS ) .

-  
-



④

Screw sub-assembly into the connector body .

( recommended coupling torque 44.25 in.lb )

-  
-

