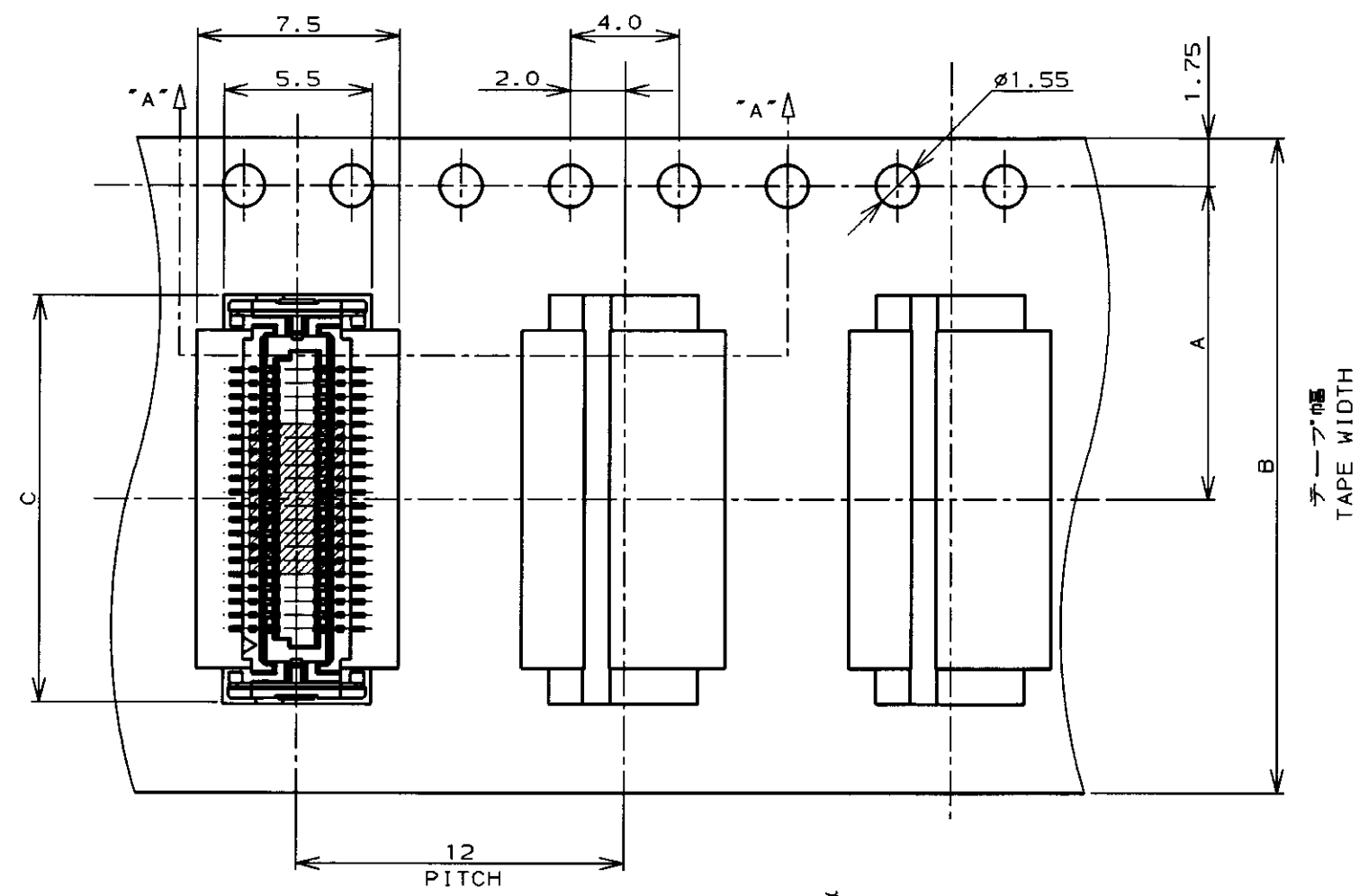
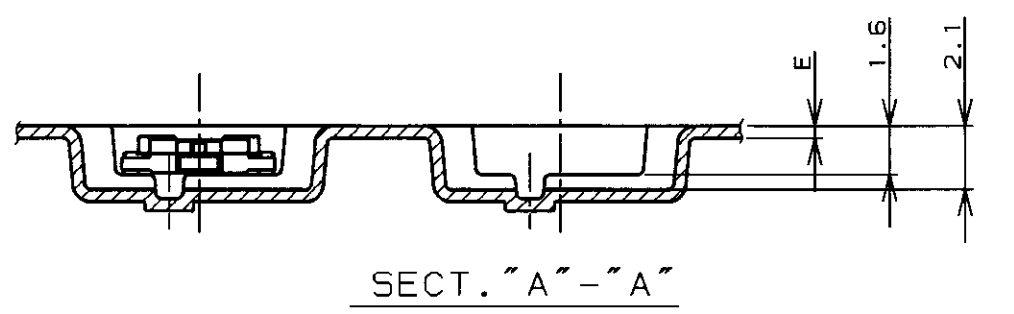
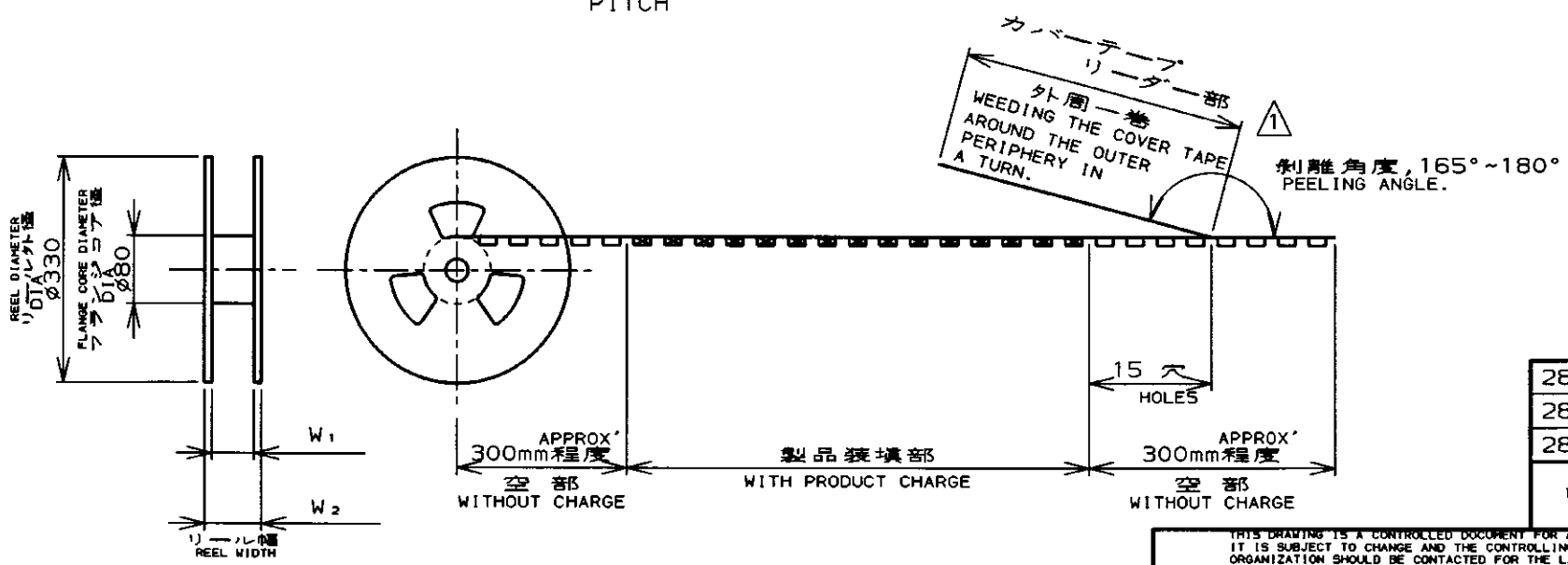


THIS DRAWING IS UNPUBLISHED. RELEASED FOR PUBLICATION .19
 (C) COPYRIGHT 19 BY AMP INCORPORATED. ALL RIGHTS RESERVED.

REVISIONS					
LOC	DIST	P	LTR	DESCRIPTION	変更
J			0	RELEASED	
				ECN	FJ00-5739-96
				DATE	11/14/96
				DWN	S.H.
				APVD	S.C.



TOP OF REEL
引出し方向
→



28.4	24.4	0.4	15.0	24	11.5	1500	40	4-353511-0	4-353512-0
28.4	24.4	0.4	12.5	24	11.5	1500	30	3-353511-0	3-353512-0
28.4	24.4	0.4	10.0	24	11.5	1500	20	2-353511-0	2-353512-0
W2	W1	E	C	B	A	数量 (ヶ) QTY/REEL	極数 Pos.	コネクタ型番 (シラ状) CONNECTOR P/N (L/P)	リール巻コネクタ型番 TAPING P/M

THIS DRAWING IS A CONTROLLED DOCUMENT FOR AMP INCORPORATED. IT IS SUBJECT TO CHANGE AND THE CONTROLLING ENGINEERING ORGANIZATION SHOULD BE CONTACTED FOR THE LATEST REVISION.

DWN: S. Kajinuma 11/14/96
 CHK: K. Mochizuki 11/14/96
 APVD: S. Kurokouchi 11/14/96

AMP 日本エー・エム・ピー株式会社
 Kawasaki, Japan

NAME: ON TAPING (EMBOSS)
 PRODUCT SPEC: ---
 APPLICATION SPEC: 取付通用規格 ---
 WEIGHT: ---

SIZE: A3 CAGE CODE: 00779 DRAWING NO: C-353512
 SCALE: --- SHEET 1 OF 1 REV 0

CUSTOMER DRAWING