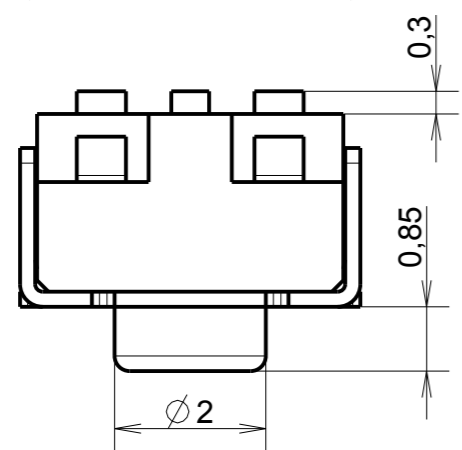
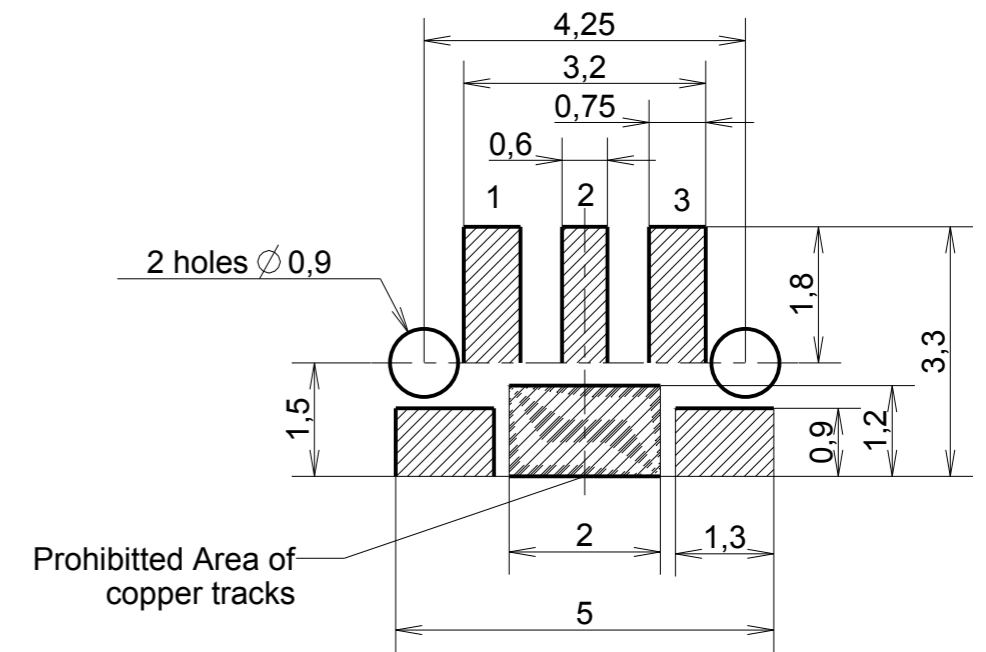
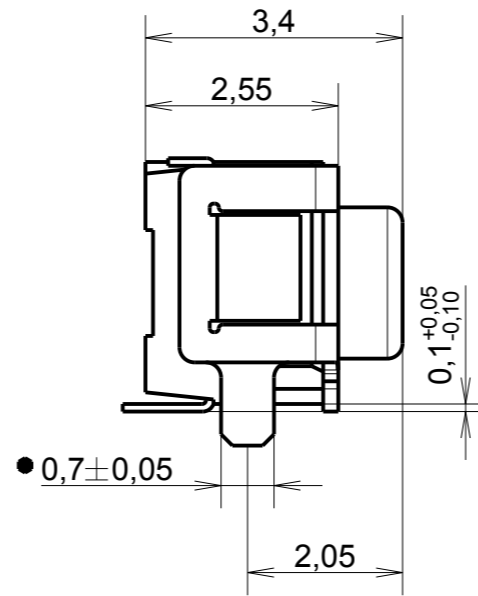
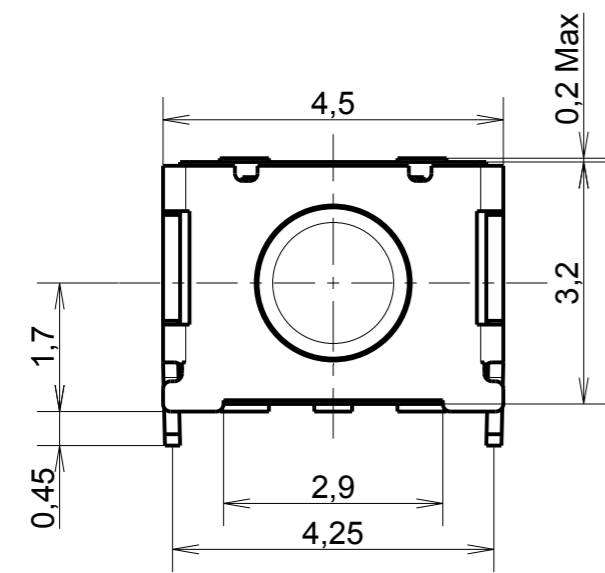
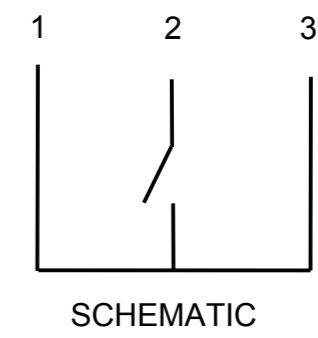
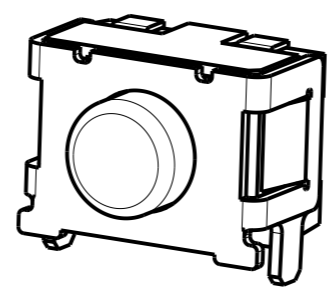
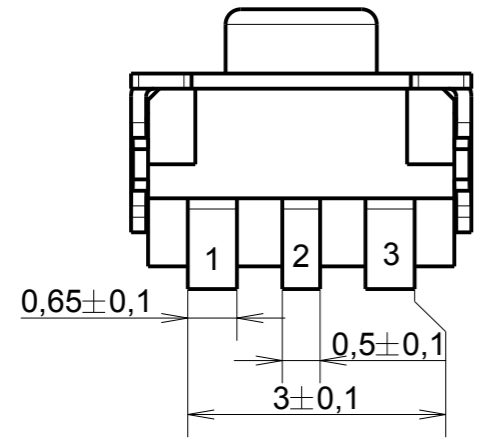


REV.	N° ECR	NATURE OF MODIFICATION	DATE	VISA
A	ECR-10895	Modify tolerance $0.7 \pm 0.1 \gg \gg 0.7 \pm 0.05$	16/07/15	ER



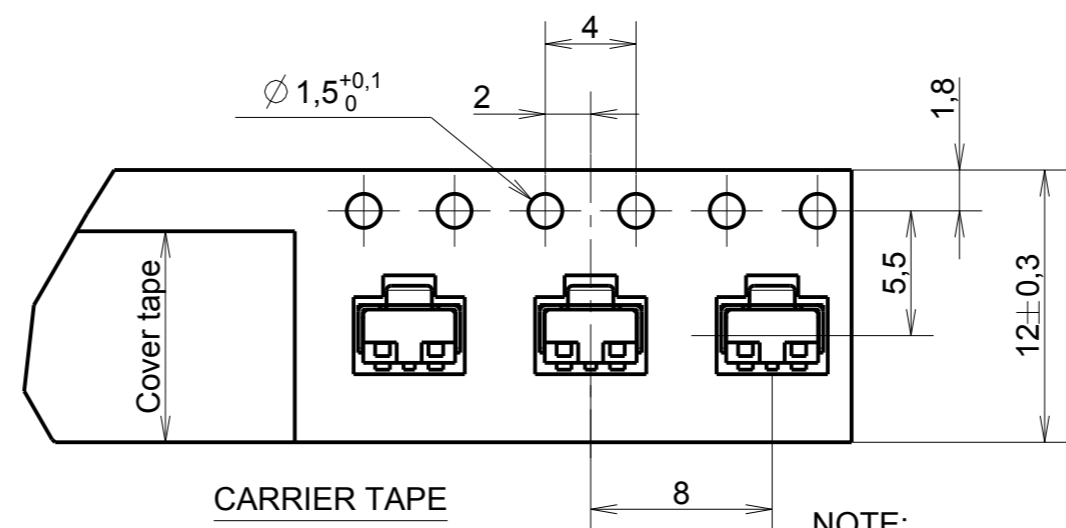
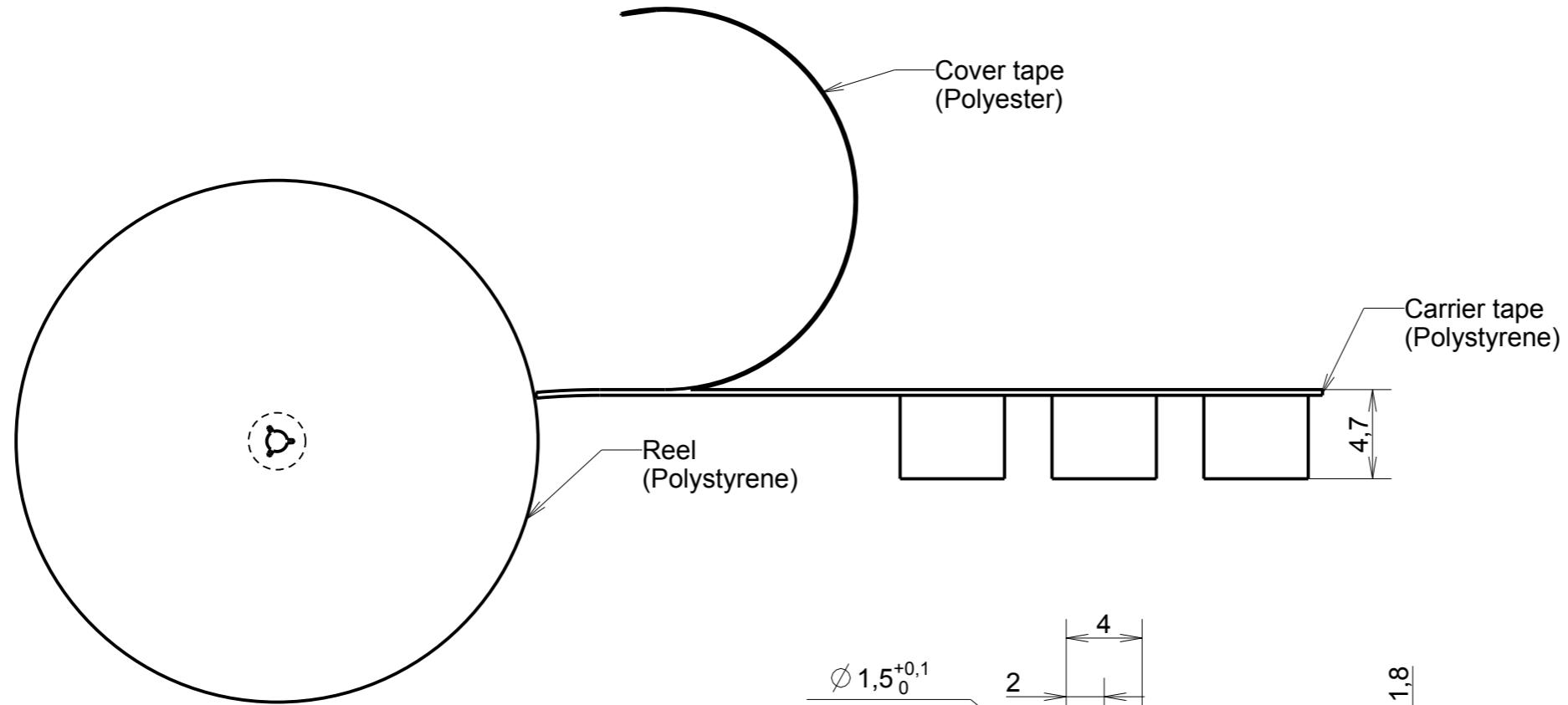
PTS 845 VX20P SMTR2 LFS
 Actuation Force
 M: 160 gf
 H: 200gf

PART NUMBER	DESIGNATION	ACTUATOR FORCE
Y97PS18B2ABFP	PTS 845 VM20P SMTR2 LFS	160gf
Y97PS18B4ABFP	PTS 845 VH20P SMTR2 LFS	200gf

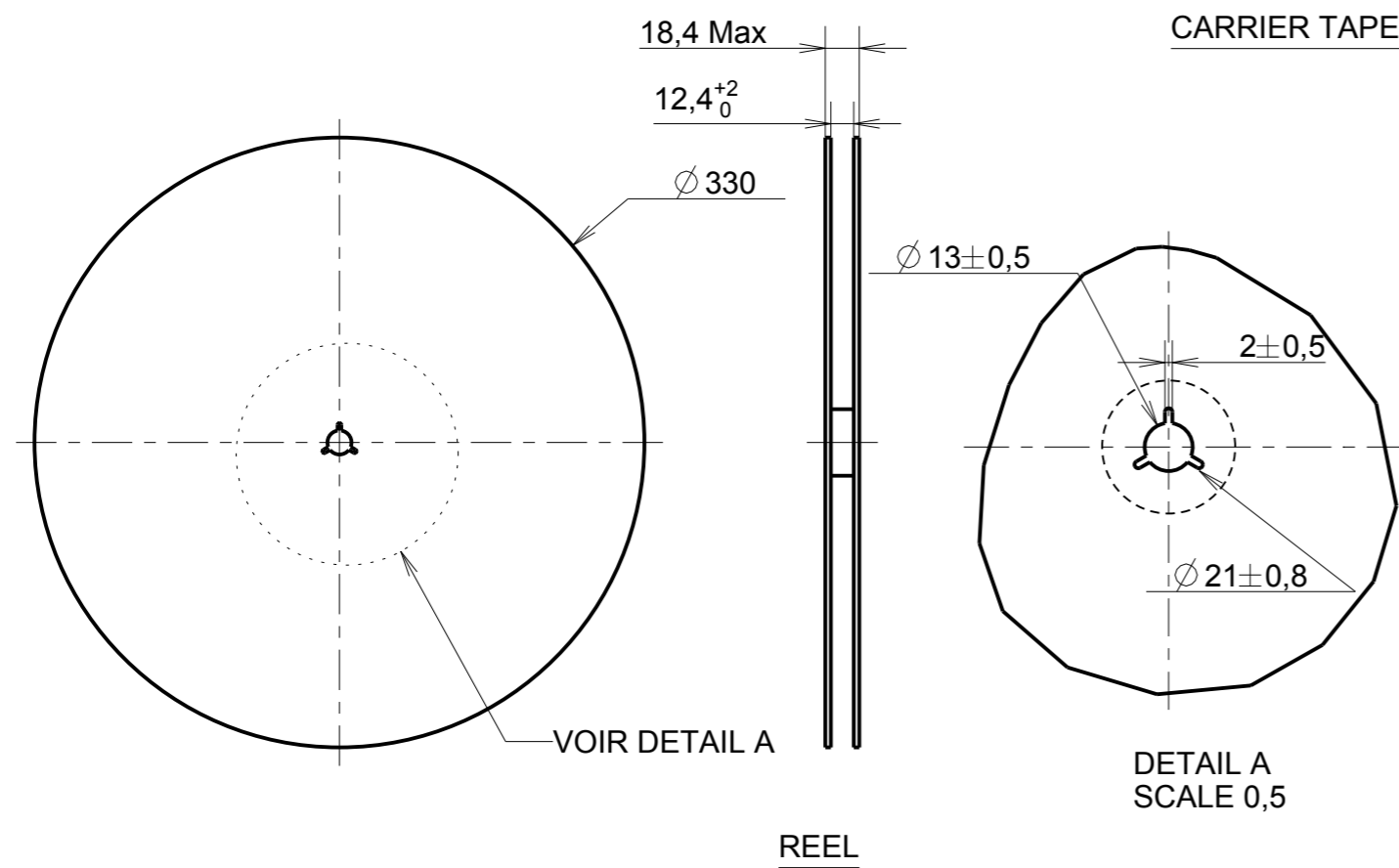
Material: .	Traitement: .	Protection: .	Volume: .
UNLESS OTHERWISE : - DIMENSIONS GIVEN BEFORE PROTECTION - BURRS AND SHARP EDGES DELETED		ANGULAR TOLERANCE $\pm 1^\circ$ LINEAR TOLERANCE $\pm 0,2$ SURFACE FINISH Ra μ	CRITICAL DIMENSIONS \blacktriangledown SPC DIMENSIONS \blacktriangledown
CREATE BY RIFFAUD	DATE 08/04/14		MODIFIED ON THIS REV. \bullet
CHECKED BY Hurtard, Stephane	DATE 17/07/15	MODIFICATION see revision table on the first sheet REPLACE	
APPROVED BY Da Mota Pais, Mario	DATE 17/07/15	FILENAME CU97M01845FP	STATE OFFICIEL
		DRAWING DESCRIPTION	
		PTS 845 VX20P SMTR2 LFS	
BP 359 - 39105 Dole - FRANCE -		SCALE 10,00	DRAWING NUMBER CU97M01845FP
		SIZE A3	SHEET 1 / 2
		REV A	

CONFIDENTIAL. This document and the information in it is the exclusive property of C&K Components and is not to be used or disclose without the express written permission of C&K Components.

A B C D E F



- NOTE:
- 1- Packaging quantity: 1900 Pcs/Reel
 - 2- More than 10 empty pockets should be remained at both ends of the carrier tape for each reel.
 - 3- Shortage less than 10 pcs a reel is acceptable but more than 3 running pockets shortage is not allowed.
 - 4- Stripping angle should be within 165°~ 180°.



Material: .	Traitement: .	Protection: .	Volume: .
UNLESS OTHERWISE : - DIMENSIONS GIVEN BEFORE PROTECTION - BURRS AND SHARP EDGES DELETED		ANGULAR TOLERANCE $\pm 1^\circ$ LINEAR TOLERANCE $\pm 0,2$ SURFACE FINISH Ra μ	CRITICAL DIMENSIONS \blacktriangledown SPC DIMENSIONS \blacktriangledown
CREATE BY RIFFAUD	DATE 08/04/14	MODIFIED ON THIS REV. \bullet	
CHECKED BY Hurtard, Stephane	DATE 17/07/15	MODIFICATION see revision table on the first sheet REPLACE	
APPROVED BY Da Mota Pais, Mario	DATE 17/07/15	FILENAME CU97M01845FP	STATE OFFICIEL
		DRAWING DESCRIPTION	
		PTS 845 VX20P SMTR2 LFS	
BP 359 - 39105 Dole - FRANCE -		SCALE 13,00	DRAWING NUMBER CU97M01845FP
		SIZE A3	SHEET 2 / 2
		REV A	

CONFIDENTIAL. This document and the information in it is the exclusive property of C&K Components and is not to be used or disclose without the express written permission of C&K Components.

A B C D E F