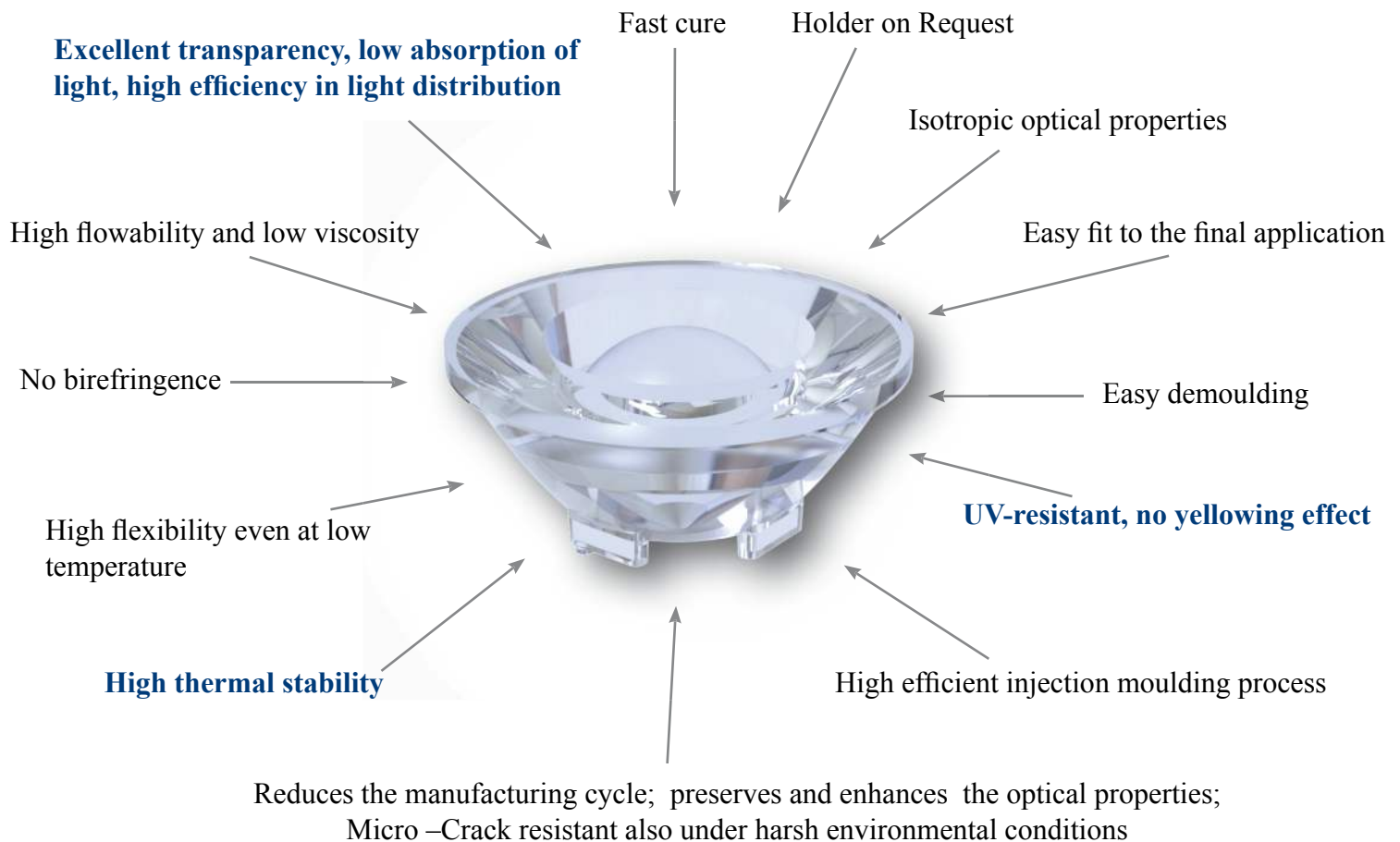


PL50SIL

Ultra Clear Silicone Optic for High Brightness LEDs and COB LEDs.



Why now a lens made of SILICONE?

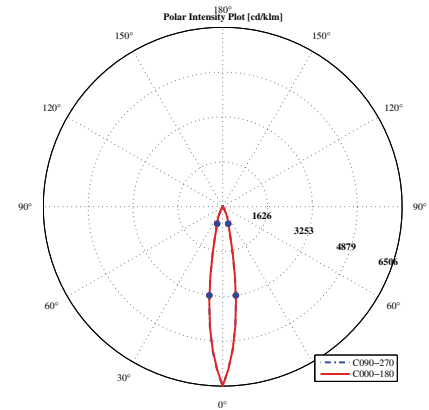
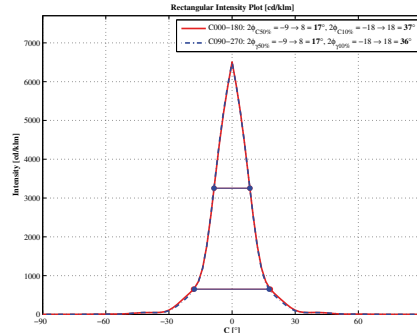
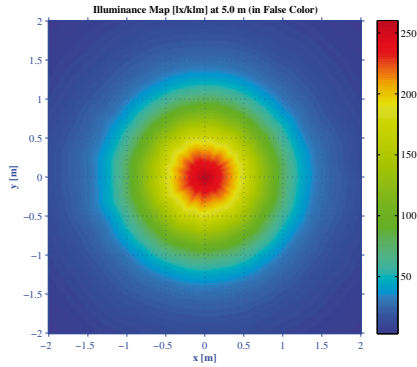
The LEDs of latest generation - High Brightness LEDs – achieve very high temperatures which could put strain on the conventional polymers such as PMMI, PMMA and PC.

- Silicone is much more resistant to high temperatures.
- Silicone considerably reduces the yellowing effect, so making PL50SIL perfect for the outdoor applications. No extra protection, as for example glass in case of head-pole, and no gasket for IP insulation are needed.
- As an isotropic material, Silicone provides PL50SIL with high flexibility which allows an easy fit to the final application.
- As an elastomer, Silicone provides a perfect compensation for the construction mechanical tolerances typical of the final application.

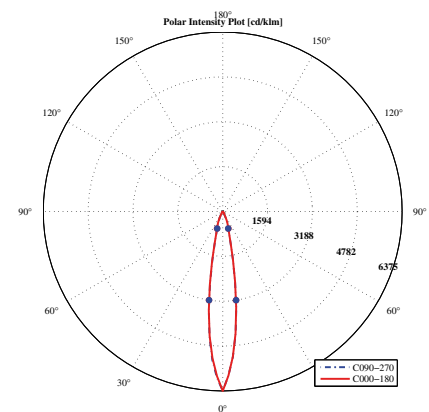
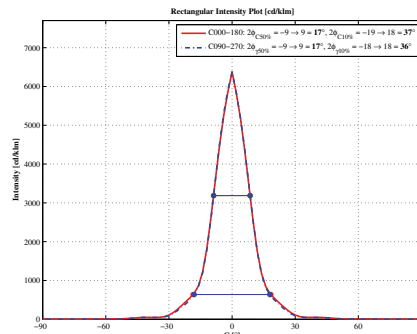
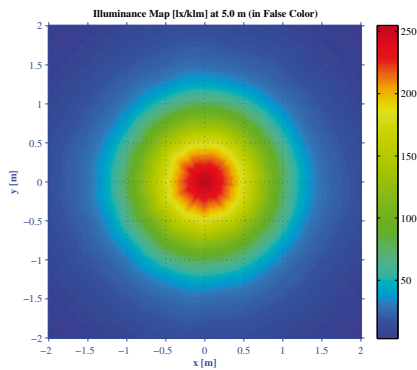
Contents

1	PL50SIL	CREE CXA 1507	Pag. 2
2	PL50SIL	CREE CXA 1512	Pag. 2
3	PL50SIL	CREE CXA 1520	Pag. 2
4	PL50SIL	CREE CXA 1304	Pag. 2
5	PL50SIL	CREE CXA 1310	Pag. 3
6	PL50SIL	CREE CXA 1816	Pag. 3
7	PL50SIL	CREE CXA 1830	Pag. 3
8	PL50SIL	CREE CXA 1850	Pag. 3
9	PL50SIL	CITIZEN CLL-012	Pag. 4
10	PL50SIL	CITIZEN CLL-022	Pag. 4
11	PL50SIL	CITIZEN CLL-032	Pag. 4
12	PL50SIL	LG INNOTEK LEMWM11 SERIES	Pag. 4
13	PL50SIL	SAMSUNG LC026B	Pag. 5
14	PL50SIL	SAMSUNG LC013B	Pag. 5
15	PL50SIL	OSRAM SOLERIQ S13	Pag. 5
16	PL50SIL	SEOUL S.C. ZC6	Pag. 5
17	PL50SIL	SEOUL S.C. ZC12	Pag. 6
18	PL50SIL	SEOUL S.C. ZC18	Pag. 6
19	PL50SIL	LUXEON 1203	Pag. 6
20	PL50SIL	TRIDONIC G3-LES10	Pag. 6
21	PL50SIL	TRIDONIC G3-LES17	Pag. 7
22	PL50SIL	NICHIA NSCWL036A	Pag. 7
23	PL50SIL	NICHIA NSBWL066A	Pag. 7
24	PL50SIL	NICHIA NSBWL121A	Pag. 7
	PL50SIL	DRAWING	Pag. 8
	Materials / Use and Maintenance / Disclaimer		Pag. 9

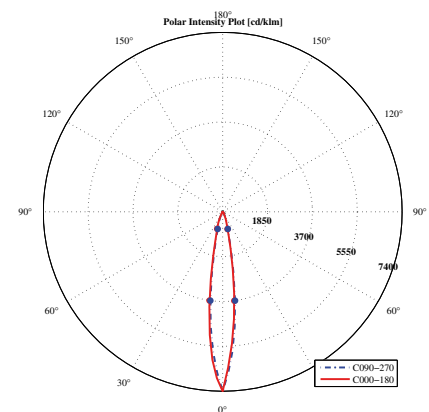
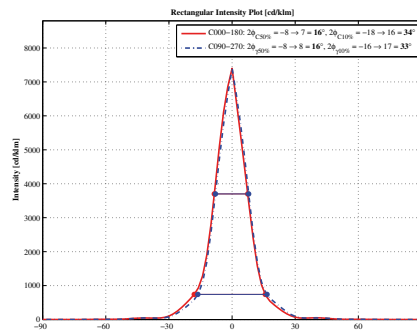
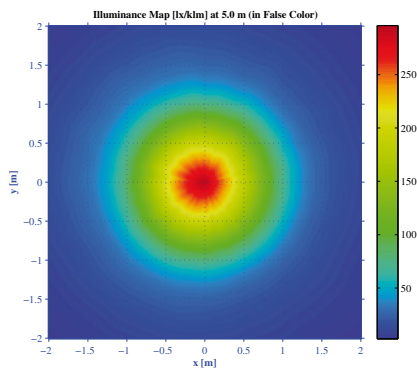
1. PL50SIL - CREE CXA 1507



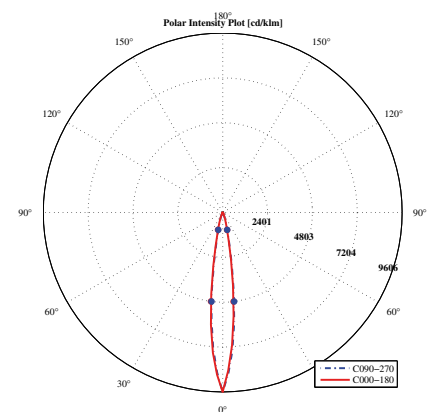
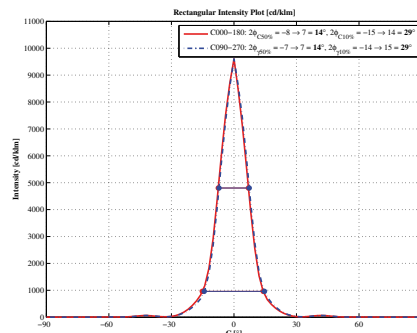
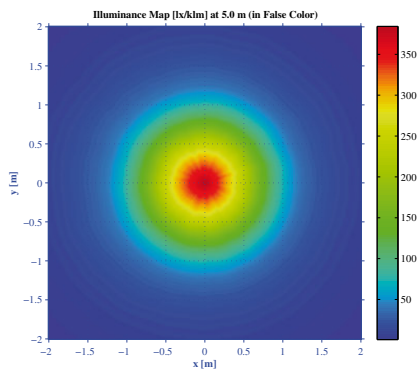
2. PL50SIL - CREE CXA 1512



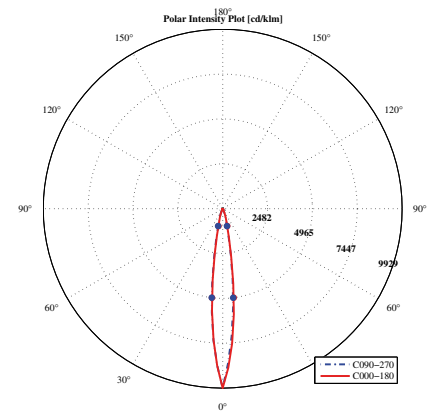
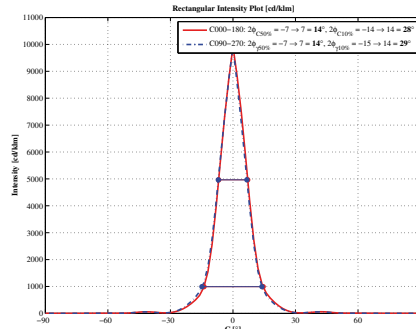
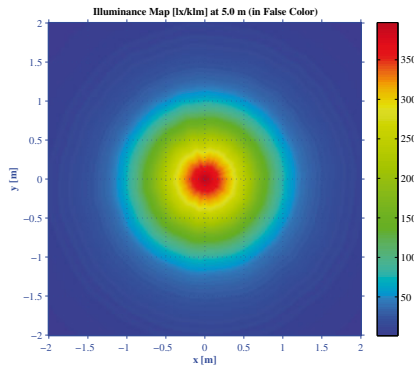
3. PL50SIL - CREE CXA 1520



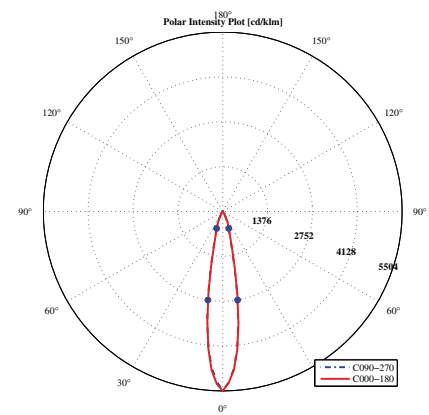
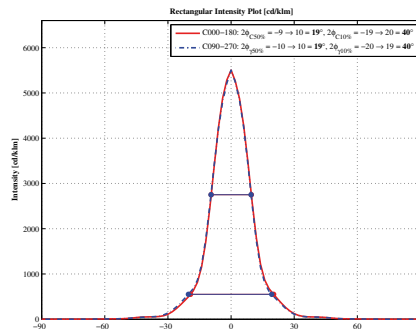
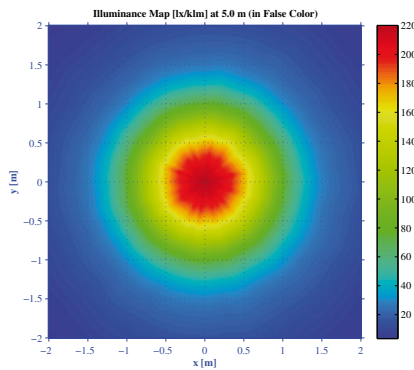
4. PL50SIL - CREE CXA-1304



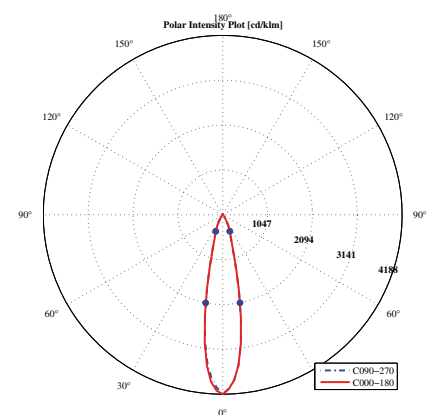
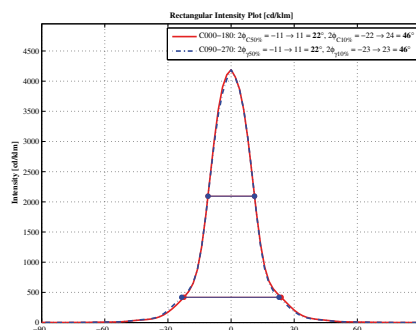
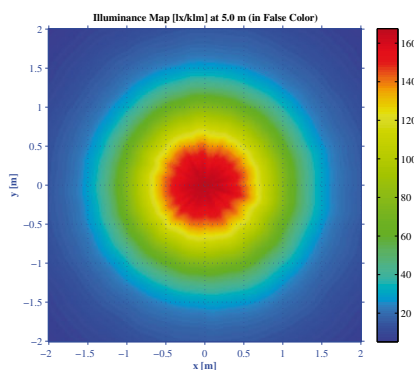
5. PL50SIL - CREE CXA-1310



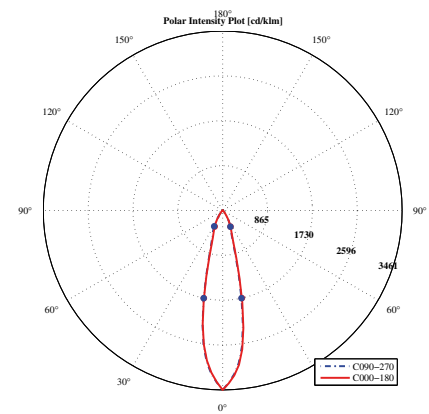
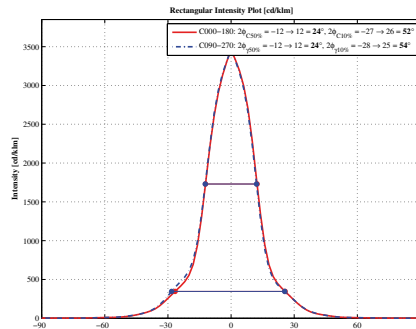
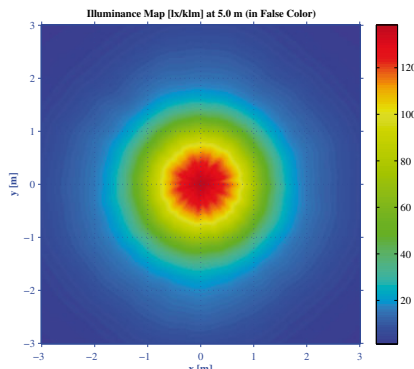
6. PL50SIL - CREE CXA-1816



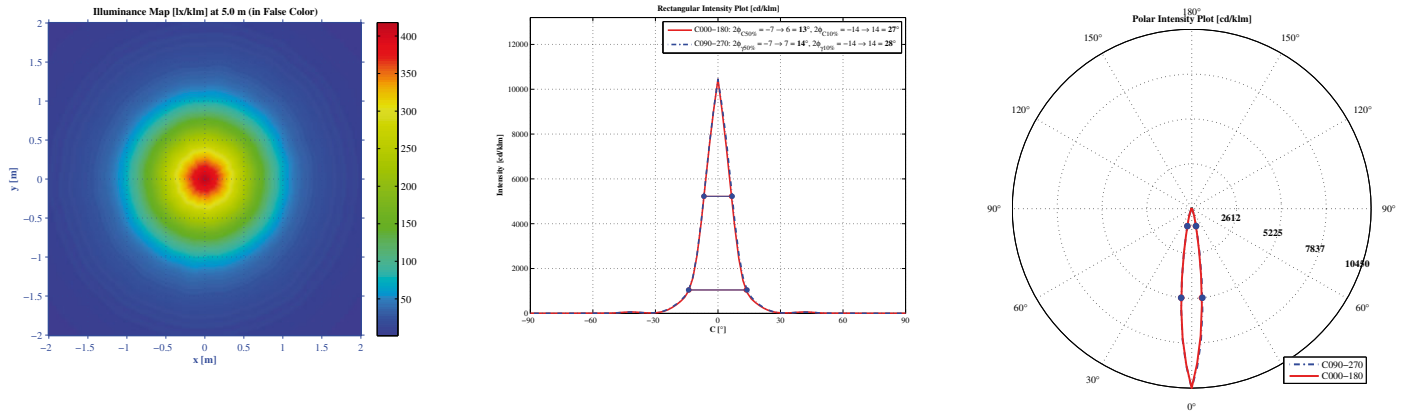
7. PL50SIL - CREE CXA-1830



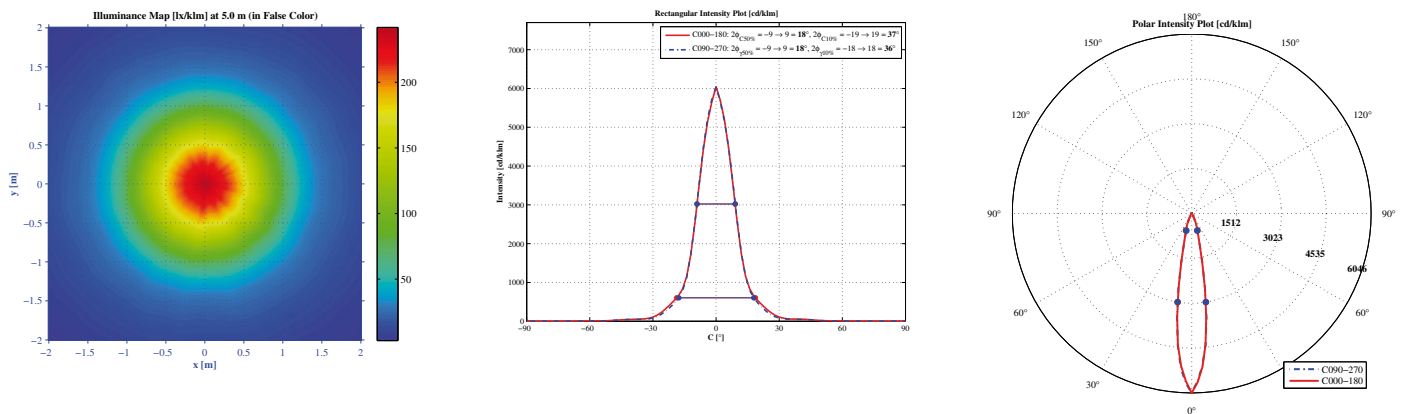
8. PL50SIL - CREE CXA-1850



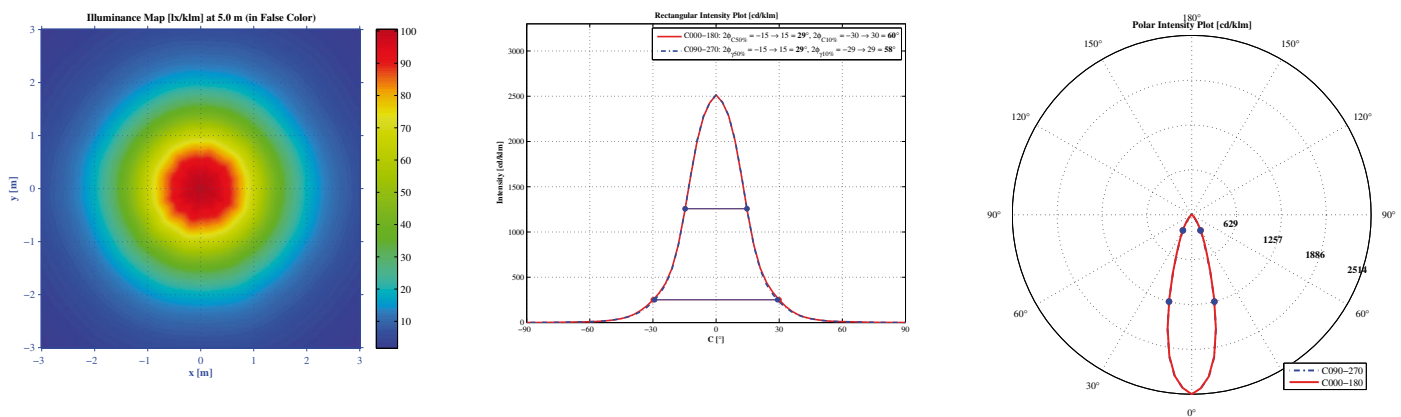
9. PL50SIL - CITIZEN CLL-012



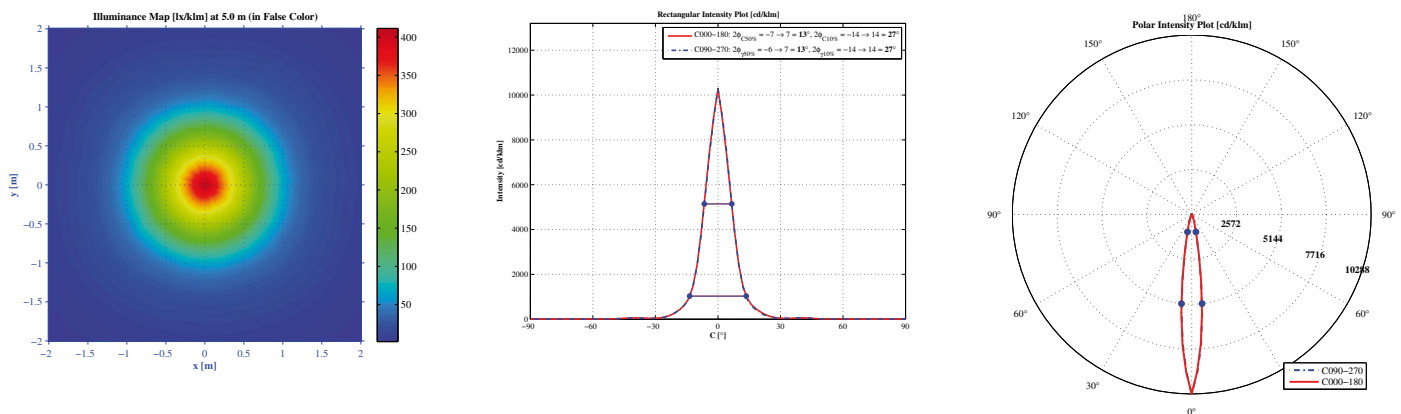
10. PL50SIL - CITIZEN CLL-022



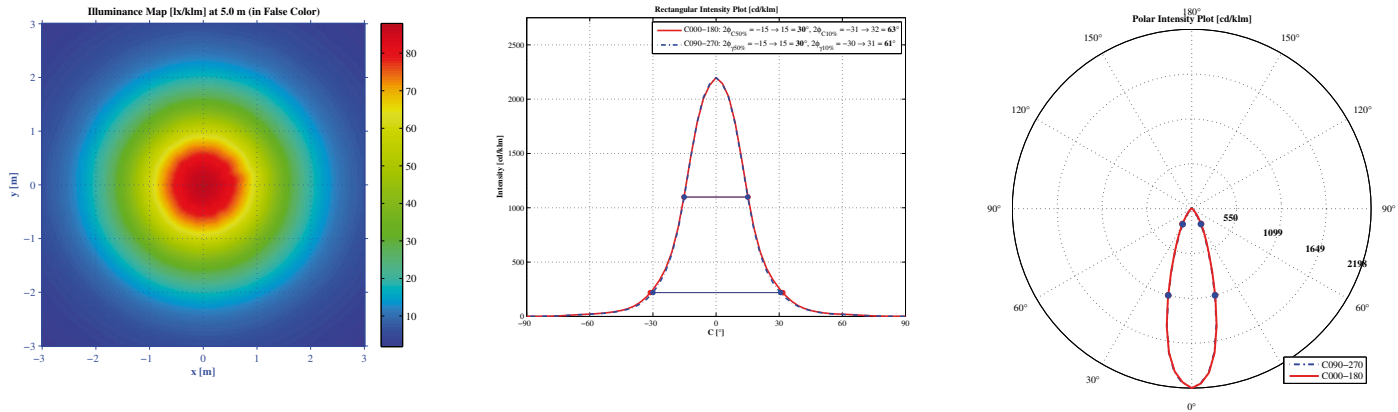
11. PL50SIL - CITIZEN CLL-032



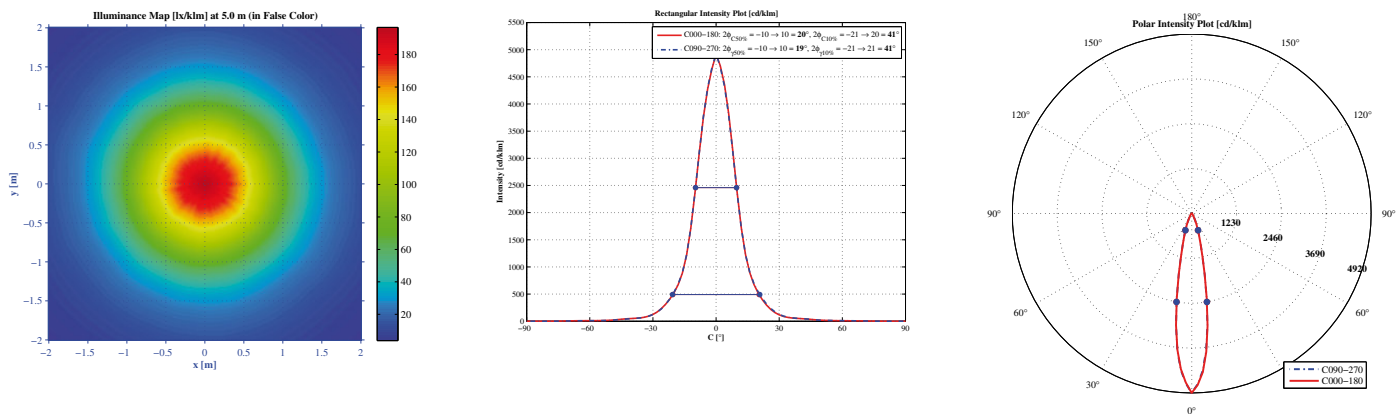
12. PL50SIL - LG Innotek - LEMWM11 Series



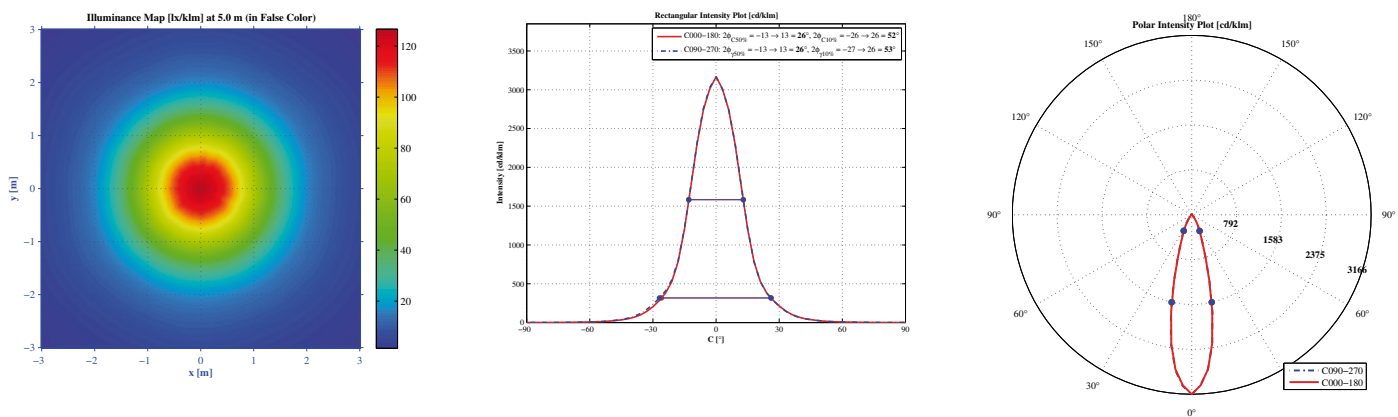
13. PL50SIL - SAMSUNG LC026B



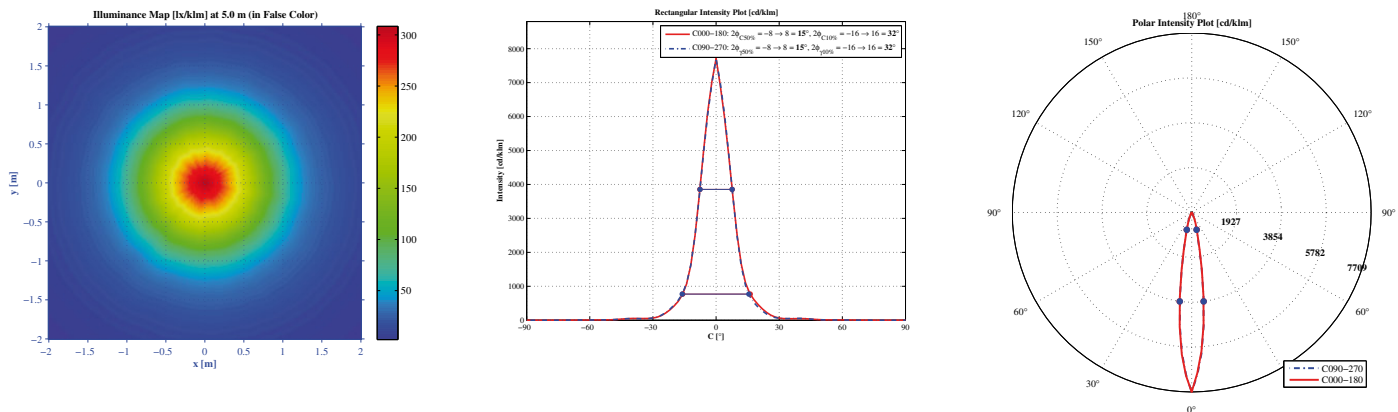
14. PL50SIL - SAMSUNG LC013B



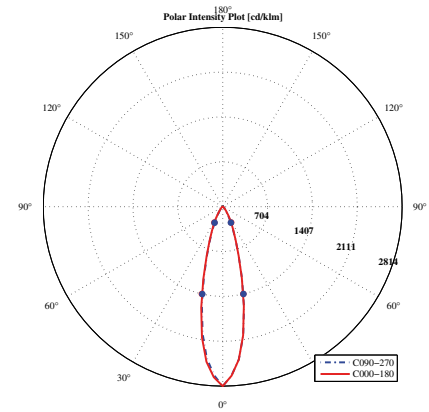
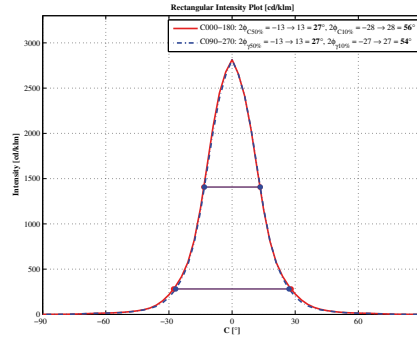
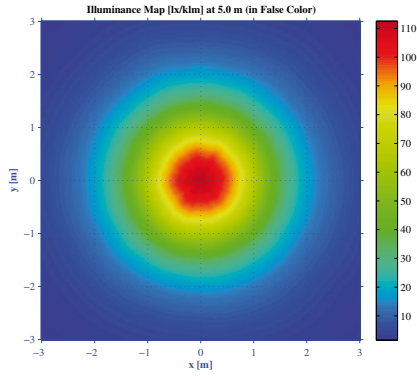
15. PL50SIL - OSRAM SOLERIQ S13



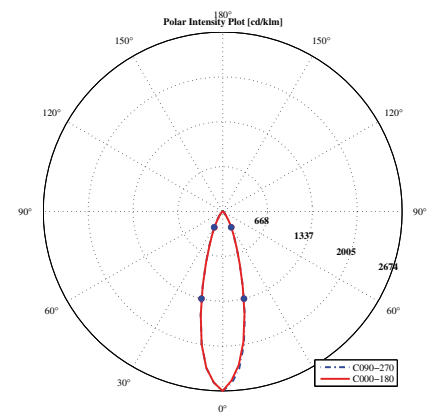
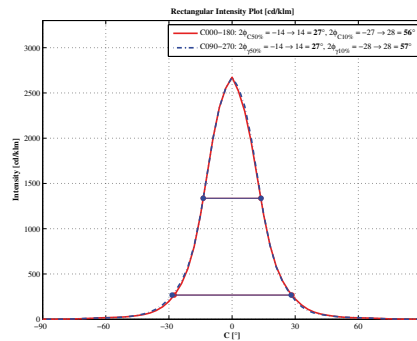
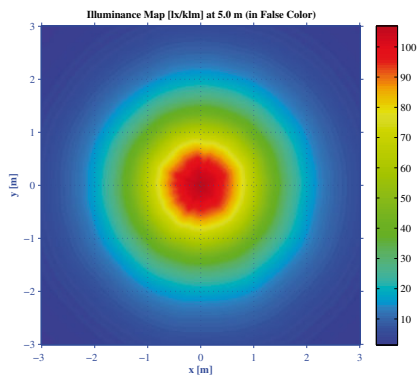
16. PL50SIL - SEOUL S.C. ZC6



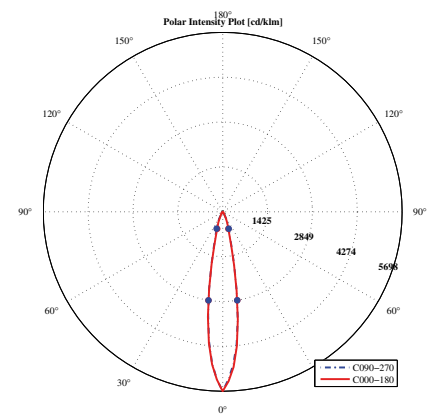
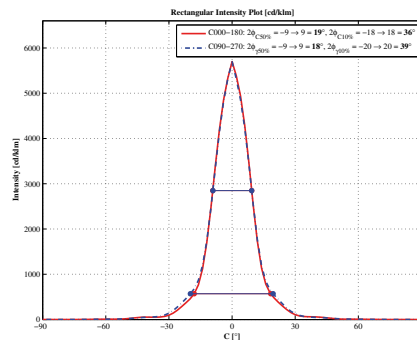
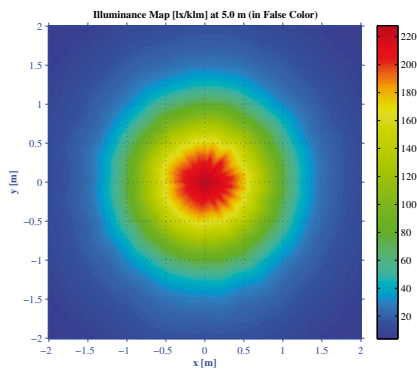
17. PL50SIL - SEOUL S.C. ZC12



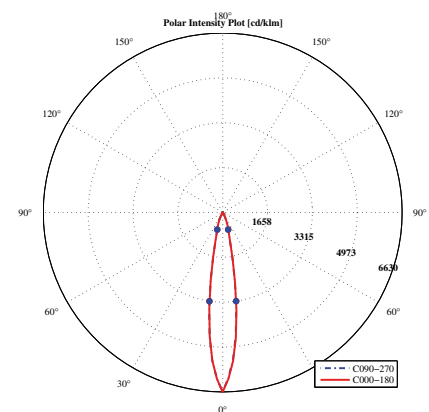
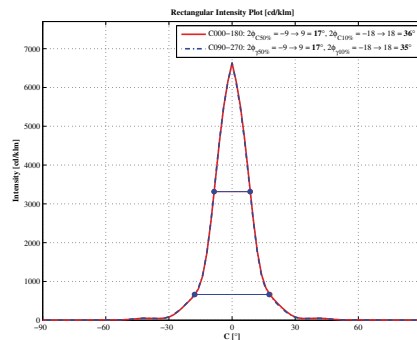
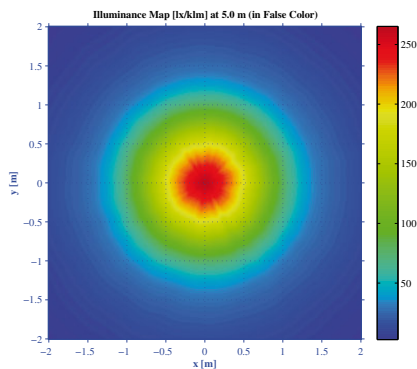
18. PL50SIL - SEOUL S.C. ZC18



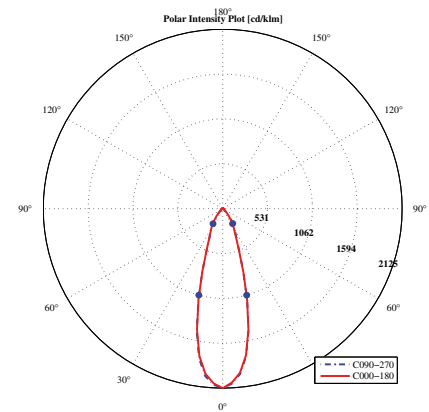
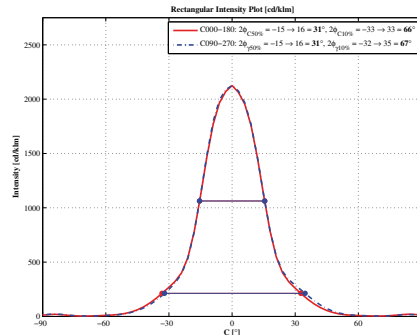
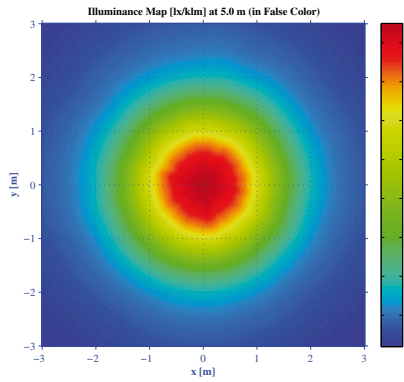
19. PL50SIL - LUXEON 1203



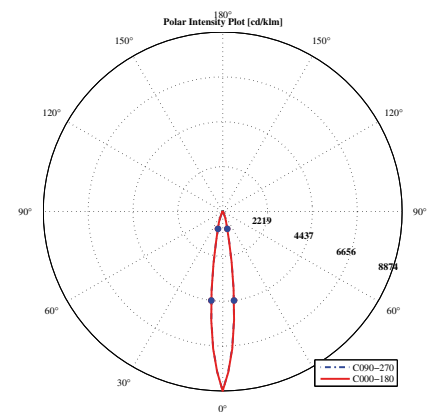
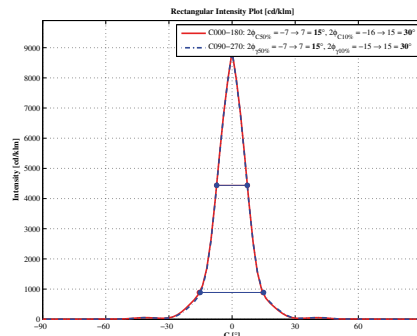
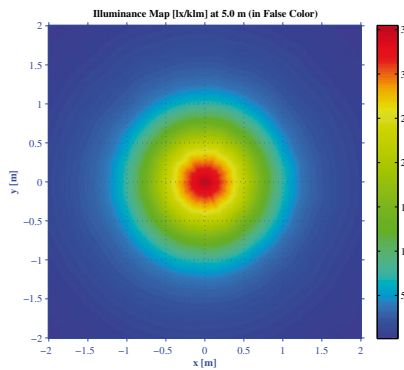
20. PL50SIL - TRIDONIC G3-LES10



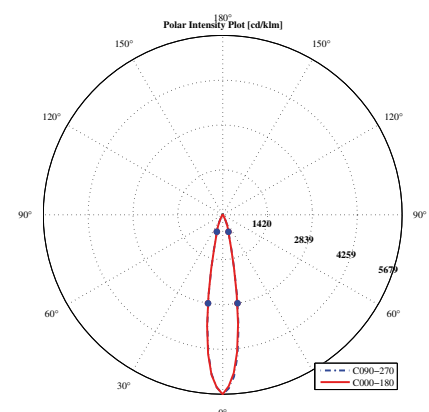
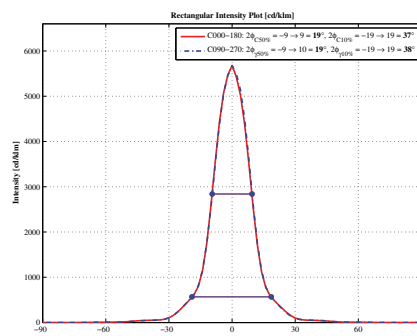
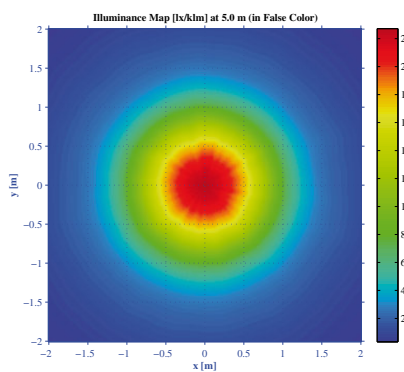
21. PL50SIL - TRIDONIC G3-LES17



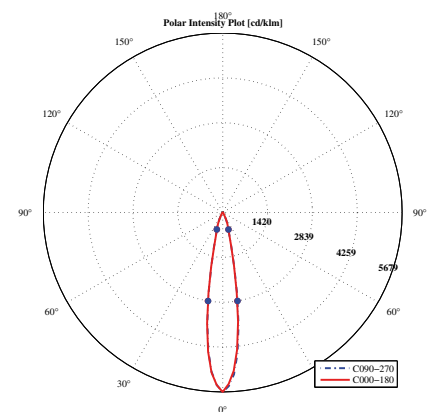
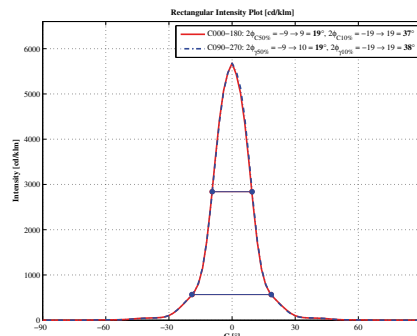
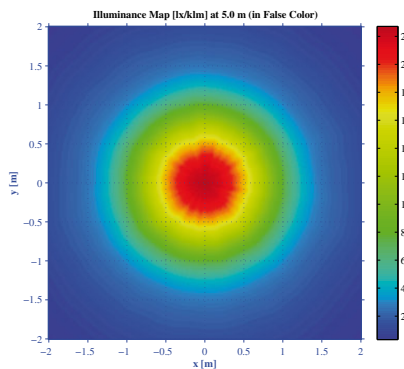
22. PL50SIL - NICHIA NSCW036A

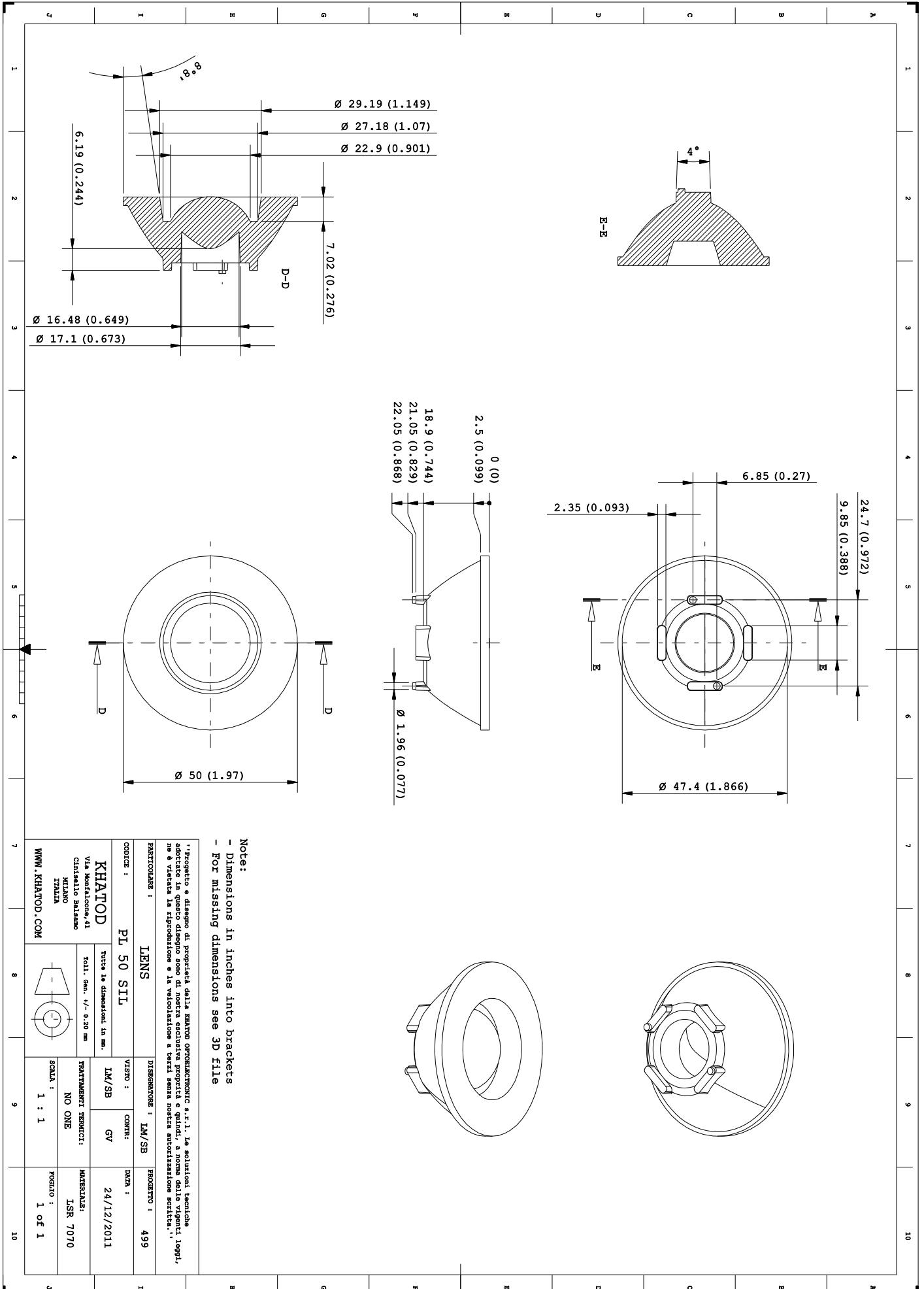


23. PL50SIL - NICHIA NSBWL066A



24. PL50SIL - NICHIA NSBW121A





Progetto e disegno di proprietà della KHATOD OPTOELETTRONIC s.r.l. In soluzioni tecniche associate in questo disegno sono di nostra esclusiva proprietà e quindi, a nome delle vigenti leggi, ne è vietata la riproduzione e la valorizzazione a terzi senza nostra autorizzazione scritta.

CODICE : PL 50 SIL		VISTO : _____		DATA : _____	
KHATOD Via Marfalcone, 41 Cinisello Balsamo Milano ITALIA WWW.KHATOD.COM		Tutte le dimensioni in mm. SOLI. GEN. +/- 0.20 mm		CONTI: _____	
PARTICOLARE : LENS		TRATTAMENTI TERMICI: NO ONE		MATERIALE: LSR 7070	
DISSEGNIATORE : _____		SCALA : 1 : 1		FOGLIO : 1 of 1	
PROGETTO : 499		PROGETTO : _____		PROGETTO : _____	

Materials

Material	Top	Tstg
Optical SILICONE	-45°...150°C	-45°...150°C

Notes:

- Intensity (I) and illuminance (E) data are normalized by 1000 lm
- The optical values shown are the result of optical simulations carried out with ASAP and ZEMAX software systems. The optical simulations are carried out on the basis of the typical values provided in the LED manufacturers' official datasheets. The photometric analysis has been carried out on physical samples. On request, by supplying your PCB, we can provide the photometric measurement file.

Use and Maintenance

- DO NOT HANDLE OR INSTALL LENSES WITHOUT WEARING GLOVES, SKIN OILS MAY DAMAGE LENS OR LIGHT TRANSMISSION;
- CLEAN LENSES WITH MILD SOAP AND WATER AND A SOFT CLOTH;
- DO NOT USE ANY COMMERCIAL CLEANING SOLVENTS ON LENSES.

Disclaimer

Please note that flow lines and weld lines on the external surfaces of the lenses are acceptable if the optical performance of the lens is within the specifications.

Should you require further information, please contact Khatod for advice. All lens testing must be subject to identical conditions as Khatod test condition. Khatod Optoelectronic, Milan, Italy, manufactures lenses for LEDs. Any other use of the lens shall void our liability and warranty. The lenses are an inert component to be used in the manufacture of various products. Our warranty and liability are limited only to the manufacture of the lens. You may not modify, copy, distribute reproduce, license or alter the lens and related materials of Khatod. Khatod does not warrant against damages or defects arising out of the use or misuse of the products; against defects or damage arising from improper installation, or against defects in the product or in its components. No warranty of any kind, expressed or implied, is made regarding the safety of the products. The entire risk as to the quality or performance of the product is with the buyer. In no event shall Khatod be liable for any direct, indirect, punitive, incidental, special, consequential damages, or any damages whatsoever arising out of or connected with the use or misuse of the product. Khatod shall not have any obligation with respect to the product or any part thereof, whether based on contract, tort, strict liability or otherwise. Buyer assumes all risks and liability from use of the product. The laws of Milan, Italy govern this product warranty and liability and you hereby consent to the exclusive jurisdiction and venue of courts in Milan, Italy in all disputes arising out of or relating to the use of this product. Production, marketing, distribution, sale of these products as well as their possible modifications and variations are only exclusive right of Khatod Optoelectronic. No company can perform any of these actions without written permission released by Khatod Optoelectronic. The information contained in this document is proprietary of Khatod Optoelectronic and may change without notice.

REPRODUCTION PROHIBITED.