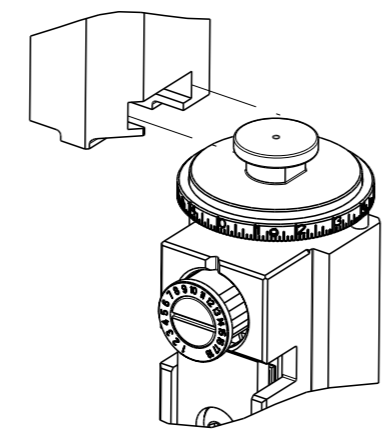


| PART NUMBER | REVISION | DESCRIPTION                      | FEED TYPE  |
|-------------|----------|----------------------------------|------------|
| 2151753-1   | D        | FINE CRIMP HEIGHT ADJUST         | MECHANICAL |
| 2151753-2   | D        | FINE CRIMP HEIGHT ADJUST         | PNEUMATIC  |
| 7-2151753-1 | D        | MECHANICAL AND CRIMP TOOLING KIT | MECHANICAL |
| 7-2151753-2 | D        | PNEUMATIC AND CRIMP TOOLING KIT  | PNEUMATIC  |
| 7-2151753-7 | A        | CRIMP TOOLING KIT                | -          |

ATLANTIC VERSION TERMINATOR INTERFACE ADAPTER

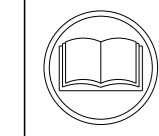


| APPLICATOR DATA |                |      |
|-----------------|----------------|------|
| CRIMP           | SIZE           | TYPE |
| WIRE            | 1.58 mm [.062] | F    |
| INSUL           | 2.03 mm [.080] | F    |

APPLICATOR INSTRUCTIONS 408-35042

| TERMINAL DATA: TE TERMINAL               |             | TE CRIMP SPECIFICATION       |             |
|--|-------------|------------------------------|-------------|
| TERMINAL NAME: PIN RECEPTACLE, .030 DIA. |             |                              |             |
| WIRE STRIP LENGTH                        |             | INSULATION DIAMETER RANGE    |             |
| 3.17-3.43 mm [.125-.135 IN]              |             | Ø1.22-1.80 mm [.048-.071 IN] |             |
| TERMINAL APPLICATION SPECIFICATION       | 114-2083    |                              |             |
| TERMINALS APPLIED                        |             |                              |             |
| TE TERMINAL                              | TE TERMINAL | TE TERMINAL                  | TE TERMINAL |
| 1742980-1                                | 60348-4     | 60373-4                      | 42428-5     |
| 42428-6                                  | 42428-8     |                              |             |

| WIRE SIZE | CRIMP HEIGHT mm [INCH]      | CRIMP HEIGHT REFERENCE SETTING |
|-----------|-----------------------------|--------------------------------|
| 20 AWG    | 1.17+/-0.05 [1.046+/-0.002] | 9.2                            |
| 22 AWG    | 1.09+/-0.05 [1.043+/-0.002] | 10.0                           |
| 24 AWG    | 1.02+/-0.05 [1.040+/-0.002] | 10.7                           |



- 1 RECOMMENDED SPARE PARTS
- 2 REFER TO SUPPLIED INSTRUCTION SHEET FOR CLEANING, LUBRICATION AND STORAGE OF APPLICATOR.
- 3 APPLY PART NUMBER 1-23419-5 LOCTITE TO THREADS OF ITEMS 50. APPLY PART NUMBER 2-23419-6 LOCTITE TO THREADS OF ITEMS 242.
- 4 CRIMP HEIGHT REFERENCE SETTING WAS THE SETTING USED WHEN THE APPLICATOR WAS QUALIFIED AT THE FACTORY. ADJUSTMENT MAY BE NECESSARY WHEN RUNNING APPLICATOR IN THE FIELD.
5. UNLESS SPECIFIED OTHERWISE TORQUE VALUES SHALL BE USED PER DOCUMENT, 101-35000.

**\*WARNING**  
ON INSTALLATION, SET WIRE DISC TO CRIMP HEIGHT REFERENCE SETTING FOR LARGEST WIRE SIZE. CRIMP HEIGHT REFERENCE SETTINGS GREATER THAN THE VALUE SHOWN MAY CAUSE DAMAGE TO THE CRIMP TOOLING, REFER TO THE INSTRUCTION SHEET FOR PROPER SETUP AND ADJUSTMENTS.

ATLANTIC VERSION  
Shown on sheets 1 of 4 & 2 of 4  
(Pacific version shown on sheets 3 of 4 & 4 of 4)

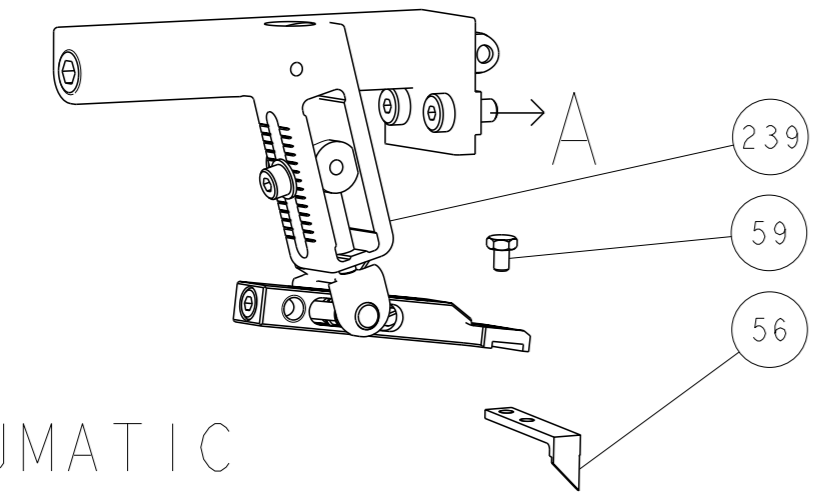
| LOC | DIST | REVISIONS |     |               |           |     |      |
|-----|------|-----------|-----|---------------|-----------|-----|------|
|     |      | P         | LY# | DESCRIPTION   | DATE      | OWN | APVD |
| A   | 66   | B         |     | ECR-14-011594 | 31JUL2014 | RK  | GB   |
|     |      | C         |     | ECR-17-000578 | 13JAN2017 | TB  | GB   |
|     |      | D         |     | ECR-19-017839 | 18NOV2019 | FJ  | TE   |

|   |     |     |     |     |             |                                     |         |
|---|-----|-----|-----|-----|-------------|-------------------------------------|---------|
| - | 1   | -   | 1   | -   | 2119641-1   | FEED CAM, AIR FEED                  | 248     |
| - | 1   | 1   | 1   | 1   | 2119082-9   | CAM, SNAIL, INSULATION ADJUSTMENT   | 244     |
| - | 1   | 1   | 1   | 1   | 2079764-1   | WASHER, WAVE SPRING, CREST-TO-CREST | 243     |
| - | 1   | 1   | 1   | 1   | 2119083-1   | RETAINER, INSULATION DIAL           | 242     |
| - | 1   | 1   | 1   | 1   | 7-18023-7   | SCR, SKT HD CAP M3 X 4.0            | 241     |
| - | -   | 1   | -   | 1   | 2119580-1   | MECHANICAL FEED ASSEMBLY            | 239     |
| - | 1   | -   | 1   | -   | 2844940-1   | AIR FEED MODULE                     | 238     |
| - | 1   | 1   | 1   | 1   | 993111-1    | PIN, SLOTTED SPRING 3.0 X 20.0      | 177     |
| - | 1   | 1   | 1   | 1   | 8-22280-7   | SPRING, COMPRESSION                 | 176     |
| - | 1   | 1   | 1   | 1   | 1752353-2   | GUIDE PIN, HOLDDOWN                 | 175     |
| - | 1   | 1   | 1   | 1   | 1901680-2   | GUIDE PIN, HOLDDOWN                 | 174     |
| - | REF | REF | REF | REF | 994970-2    | COUNTER, MAGNETIC                   | 164     |
| - | 1   | 1   | 1   | 1   | 1-18028-2   | WASHER, FLAT, REG M4                | 119     |
| - | 1   | 1   | 1   | 1   | 2844908-1   | SCREW, LOCKING                      | 99      |
| - | 1   | 1   | 1   | 1   | 2844907-1   | POST, LOCKING                       | 98      |
| - | 1   | 1   | 1   | 1   | 455888-4    | SPACER, CRIMPER                     | 82      |
| - | 1   | 1   | 1   | 1   | 1803607-3   | DOCUMENTATION PACKAGE               | 71      |
| - | 1   | 1   | 1   | 1   | 2119740-1   | TAG, IDENTIFICATION                 | 67      |
| - | 2   | 2   | 2   | 2   | 2168078-1   | SCREW, DRIVE, RH, RoHS, 2 x .188    | 66      |
| - | 1   | 1   | 1   | 1   | 2168083-2   | SCR, SKT HD CAP, RoHS, M4 X 8.0     | 60      |
| - | 1   | 1   | 1   | 1   | 5-18022-5   | SCR, HEX HD CAP, M4 X 6.0           | 59      |
| - | 1   | 1   | 1   | 1   | 1338685-1   | PAWL, FEED                          | 56      |
| - | 2   | 2   | 2   | 2   | 2168083-3   | SCR, SKT HD CAP, RoHS, M4 X 12.0    | 54      |
| - | 1   | 1   | 1   | 1   | 1-5018030-0 | NUT, HEX, REG, RoHS, M3.5           | 52      |
| - | 1   | 1   | 1   | 1   | 1901681-1   | HOLDDOWN, TERMINAL                  | 51      |
| - | 1   | 1   | 1   | 1   | 1-1752354-5 | STANDOFF, HOLD-DOWN                 | 50      |
| - | 1   | 2   | 1   | 2   | 18023-9     | SCR, SKT HD CAP M4 X 6.0            | 49      |
| - | -   | 1   | -   | 1   | 2119652-1   | FEED CAM, PRE FEED                  | 48      |
| - | -   | 1   | -   | 1   | 2119653-1   | FEED CAM, POST FEED                 | 47      |
| - | 1   | 1   | 1   | 1   | 1803583-9   | APPLICATOR BASIC ASSEMBLY, SF       | 46      |
| - | 1   | 1   | 1   | 1   | 1803515-3   | RAM ASSEMBLY, SF ATLANTIC           | 44      |
| - | 1   | 1   | 1   | 1   | 1803602-1   | SCR, BHSC, RoHS (M8 X 25)           | 41      |
| - | 1   | 1   | 1   | 1   | 3-1752356-4 | SUPPORT, TERMINAL                   | 34      |
| - | 2   | 2   | 2   | 2   | 2079383-5   | SCR, BHSC, RoHS (M4 X 20)           | 33      |
| - | 2   | 2   | 2   | 2   | 2-2844962-6 | SPACER, CYLINDRICAL, STRIP GUIDE    | 30      |
| - | 1   | 1   | 1   | 1   | 2844992-1   | ASSEMBLY, STRIP GUIDE               | 29      |
| - | 1   | 1   | 1   | 1   | 1-455888-0  | SPACER, CRIMPER                     | 28      |
| - | 1   | 1   | 1   | 1   | 1320928-2   | STRIP GUIDE                         | 24      |
| - | 1   | 1   | 1   | 1   | 2168083-2   | SCR, SKT HD CAP, RoHS, M4 X 8.0     | 21      |
| - | 1   | 1   | 1   | 1   | 1-18028-2   | WASHER, FLAT, REG M4                | 20      |
| - | 1   | 1   | 1   | 1   | 2119533-1   | STRIPPER, SIDE FEED                 | 19      |
| - | 1   | 1   | 1   | 1   | 2119806-1   | INSERT, SHEAR                       | 13      |
| - | 1   | 1   | 1   | 1   | 3-22280-3   | SPRING, COMPRESSION                 | 12      |
| - | 1   | 1   | 1   | 1   | 1-356885-4  | STOP, SHEAR                         | 11      |
| - | 1   | 1   | 1   | 1   | 2119805-1   | SHEAR HOLDER, FRONT                 | 10      |
| - | 1   | 1   | 1   | 1   | 454276-5    | FLOATING SHEAR, FRONT               | 9       |
| - | 1   | 2   | 2   | 1   | 1-1633927-1 | ANVIL, COMBINATION                  | 8       |
| - | -   | -   | -   | -   | -           | -                                   | 7       |
| - | -   | -   | -   | -   | -           | -                                   | 6       |
| - | 1   | 1   | 1   | 1   | 2119757-4   | DEPRESSOR, SHEAR                    | 5       |
| - | 1   | 1   | 1   | 1   | 3-238011-3  | BLOCK, CRIMPER SPACER               | 4       |
| - | 1   | 2   | 2   | 1   | 1-1633961-6 | CRIMPER, INSULATION F PREMIUM       | 3       |
| - | -   | -   | -   | -   | -           | -                                   | 2       |
| - | 1   | 2   | 2   | 1   | 1-456403-6  | CRIMPER, WIRE PREMIUM               | 1       |
| - | 77  | 72  | 71  | -2  | -1          | PART NO                             | ITEM NO |

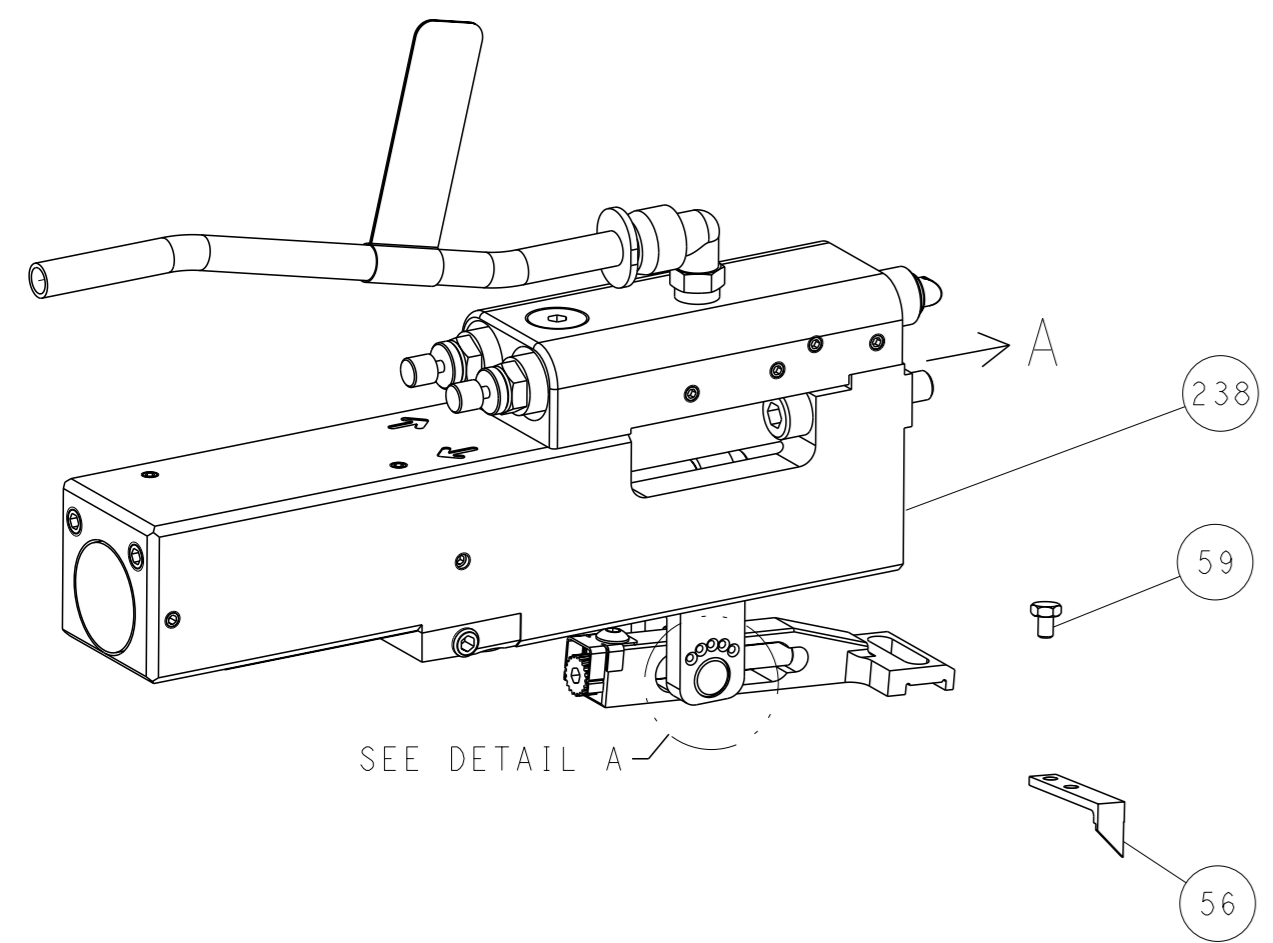
| DIMENSIONS: |         | TOLERANCES UNLESS OTHERWISE SPECIFIED: |         | APPROVED: |         | NAME:     |                |
|-------------|---------|--|---------|-----------|---------|-----------|----------------|
| mm          | 0 PLC ± | 1 PLC ±                                | 2 PLC ± | 3 PLC ±   | 4 PLC ± | APPROVED: | NAME:          |
|             | ANGLES  | FINISH                                 |         |           |         |           |                |
| MATERIAL:   |         |  |         | WEIGHT:   |         | SCALE:    | RESTRICTED TO: |
|             |         |  |         |           |         | 1:2       | REV D          |

| LOC |    | DIST |     | REVISIONS   |      |     |      |
|-----|----|------|-----|-------------|------|-----|------|
| A   | 66 | P    | LYR | DESCRIPTION | DATE | OWN | APVD |
|     |    | -    |     | SEE SHEET 1 |      |     |      |

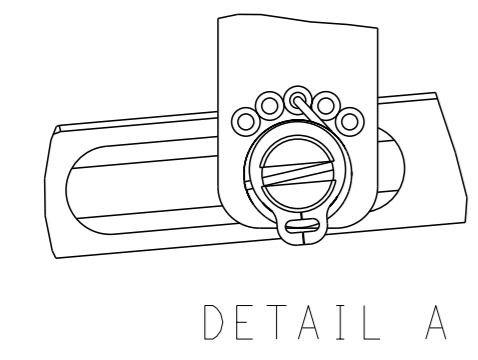
# FEED TYPE MECHANICAL



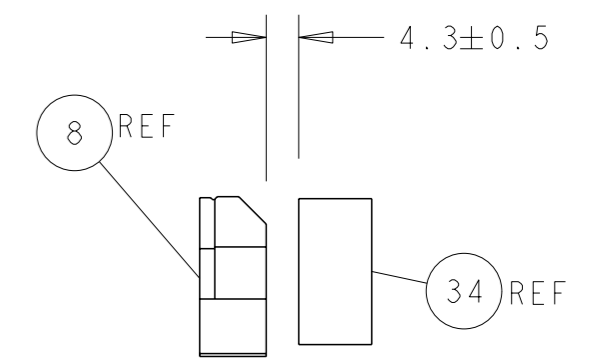
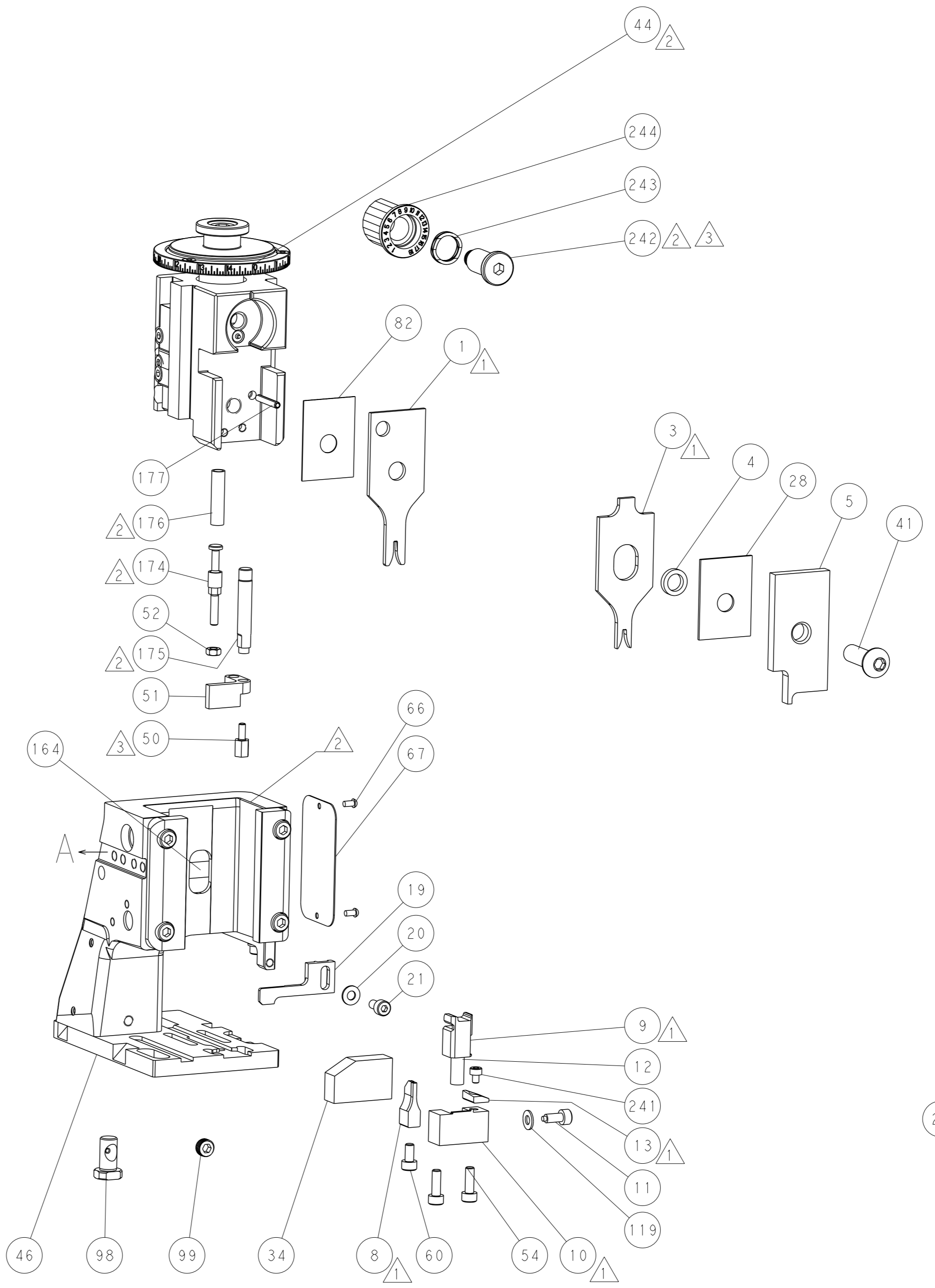
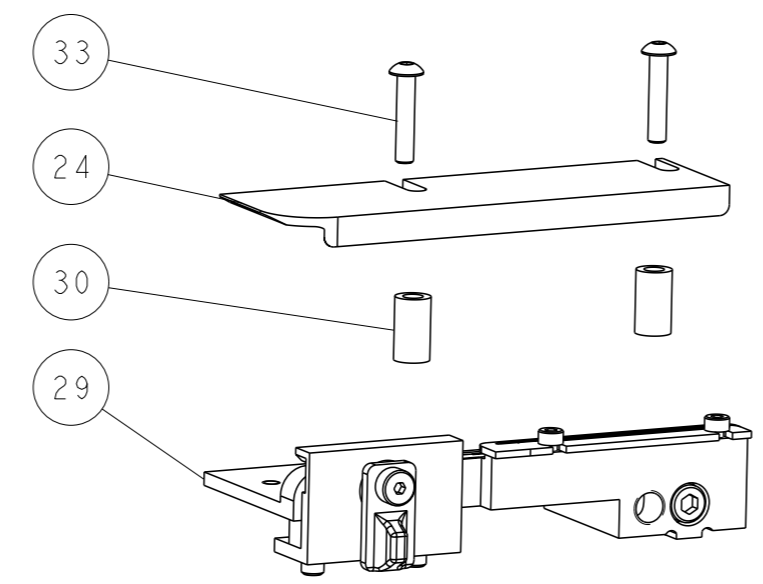
## PNEUMATIC



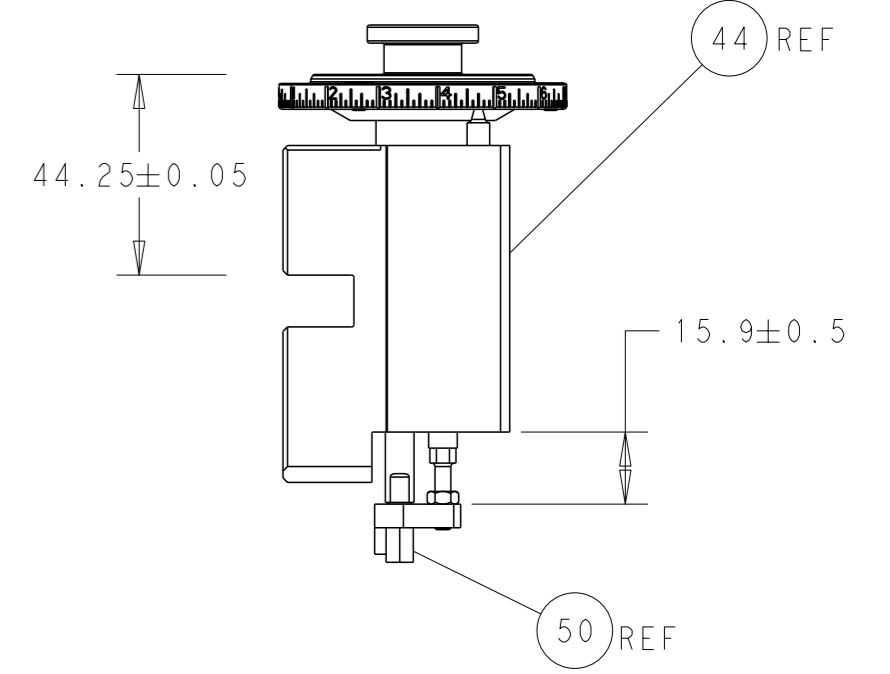
## FEED SPRING SETTING POSITION (SHOWN FROM REAR SIDE)



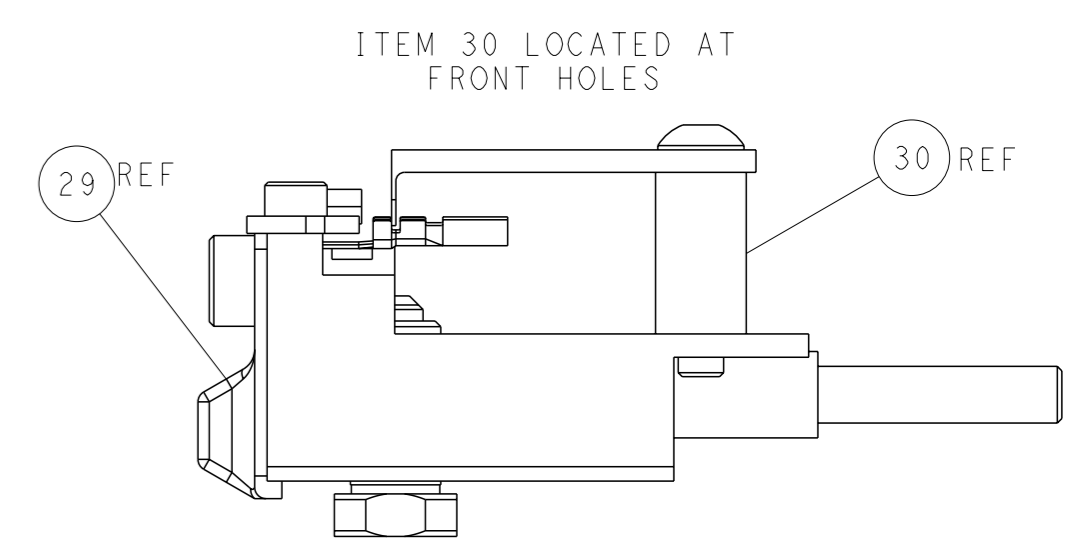
DETAIL A



TERMINAL SUPPORT LOCATION

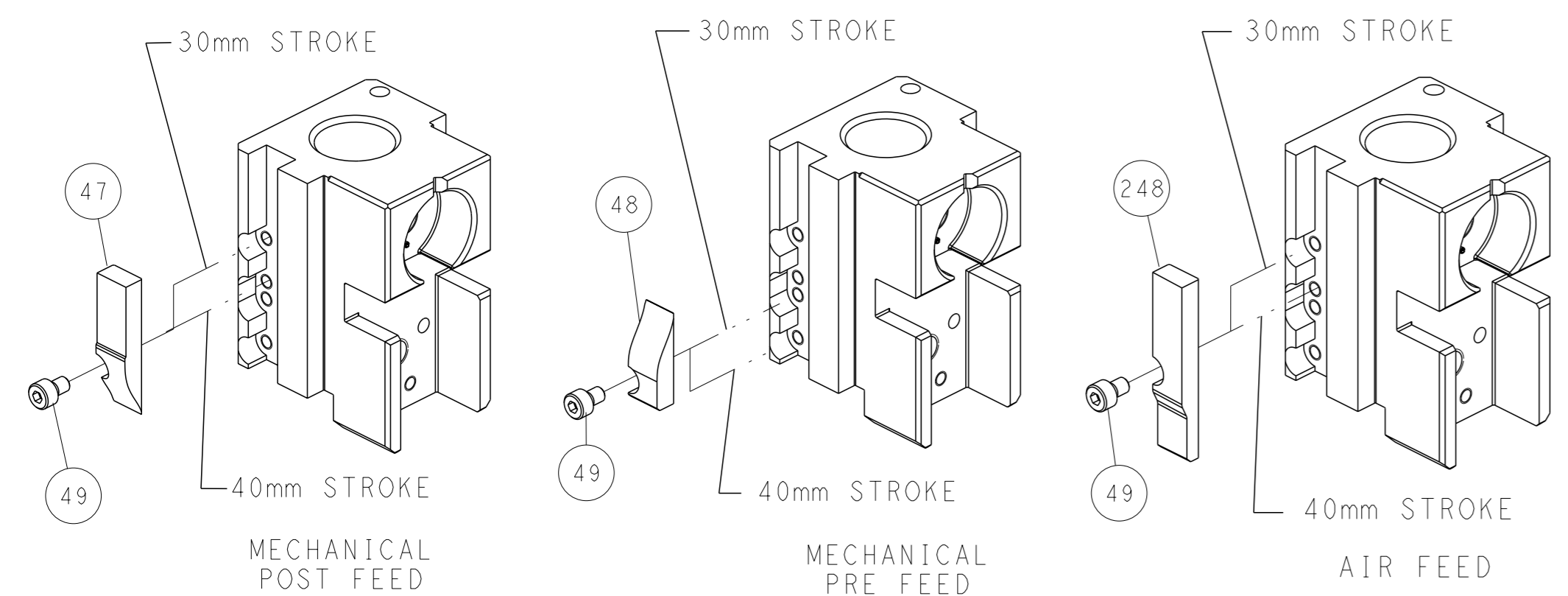


RAM AND HOLDDOWN SET-UP



FEED TRACK POSITION GUIDE BY INSULATION BARREL

# CAM POSITIONS

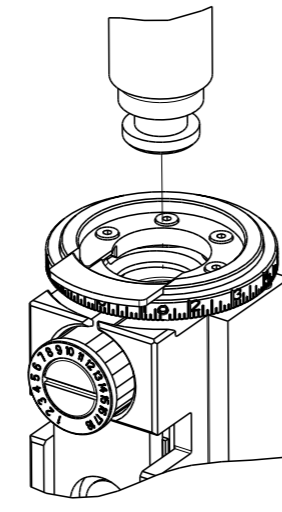


**ATLANTIC VERSION**  
 Shown on sheets 1 of 4 & 2 of 4  
 (Pacific version shown on sheets 3 of 4 & 4 of 4)

|   |  |  |   |  |
|---|--|--|---|--|
| <small>THIS DRAWING IS A CONTROLLED DOCUMENT FOR TYCO ELECTRONICS CORPORATION. IT IS SUBJECT TO CHANGE AND TO CONTROL AND ENGINEERING DISCRETION SHOULD BE CONTACTED FOR THE LATEST REVISION.</small> |  | OWN: HOFFNER<br>CHK: T. ELBIN<br>APVD: T. ELBIN<br>PRODUCT SPEC: -<br>APPLICATION SPEC: -<br>MATERIAL: -<br>FINISH: -<br>WEIGHT: - | DATE: 30AUG2012<br>NAME: Ocean Side Feed Applicator<br>SIZE: A1<br>CAGE CODE: 00779<br>DRAWING NO: 2151753<br>SCALE: 1:2<br>SHEET: 2 of 4<br>REV: D | TE Connectivity<br>Harrisburg, PA 17105-3608 |
|---|--|--|---|--|

|   |                          |                          |            |
|---|--------------------------|--------------------------|------------|
| THIS DRAWING IS UNPUBLISHED.                          | RELEASED FOR PUBLICATION |                          |            |
| BY TICO ELECTRONICS CORPORATION. ALL RIGHTS RESERVED. |                          |                          |            |
| PART NUMBER   | REVISION                 | DESCRIPTION              | FEED TYPE  |
| 2-2151753-1   | D                        | FINE CRIMP HEIGHT ADJUST | MECHANICAL |
| 2-2151753-2   | D                        | FINE CRIMP HEIGHT ADJUST | PNEUMATIC  |
| 7-2151753-7   | A                        | CRIMP TOOLING KIT        | -          |

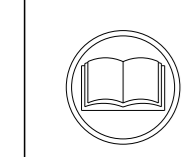
PACIFIC VERSION TERMINATOR  
INTERFACE ADAPTER



| APPLICATOR DATA                      |                |      |
|--------------------------------------|----------------|------|
| CRIMP                                | SIZE           | TYPE |
| WIRE                                 | 1.58 mm [.062] | F    |
| INSUL                                | 2.03 mm [.080] | F    |
| APPLICATOR INSTRUCTIONS<br>408-35042 |                |      |

|  |             |                              |             |
|--|-------------|------------------------------|-------------|
| TERMINAL DATA: TE TERMINAL               |             | TE CRIMP SPECIFICATION       |             |
| TERMINAL NAME: PIN RECEPTACLE, .030 DIA. |             |                              |             |
| WIRE STRIP LENGTH                        |             | INSULATION DIAMETER RANGE    |             |
| 3.17-3.43 mm [.125-.135 IN]              |             | Ø1.22-1.80 mm [.048-.071 IN] |             |
| TERMINAL APPLICATION SPECIFICATION       | 114-2083    |                              |             |
| TERMINALS APPLIED                        |             |                              |             |
| TE TERMINAL                              | TE TERMINAL | TE TERMINAL                  | TE TERMINAL |
| 1742980-1                                | 60348-4     | 60373-4                      | 42428-5     |
| 42428-6                                  | 42428-8     |                              |             |

| WIRE SIZE | CRIMP HEIGHT mm [INCH]     | CRIMP HEIGHT REFERENCE SETTING |
|-----------|----------------------------|--------------------------------|
| 20 AWG    | 1.17+/-0.05 [.046+/-0.002] | 9.2                            |
| 22 AWG    | 1.09+/-0.05 [.043+/-0.002] | 10.0                           |
| 24 AWG    | 1.02+/-0.05 [.040+/-0.002] | 10.7                           |



- 1 RECOMMENDED SPARE PARTS
- 2 REFER TO SUPPLIED INSTRUCTION SHEET FOR CLEANING, LUBRICATION AND STORAGE OF APPLICATOR.
- 3 APPLY PART NUMBER 1-23419-5 LOCTITE TO THREADS OF ITEMS 50. APPLY PART NUMBER 2-23419-6 LOCTITE TO THREADS OF ITEMS 242.
- 4 CRIMP HEIGHT REFERENCE SETTING WAS THE SETTING USED WHEN THE APPLICATOR WAS QUALIFIED AT THE FACTORY. ADJUSTMENT MAY BE NECESSARY WHEN RUNNING APPLICATOR IN THE FIELD.
- 5. UNLESS SPECIFIED OTHERWISE TORQUE VALUES SHALL BE USED PER DOCUMENT, 101-35000.

**\*WARNING**  
ON INSTALLATION, SET WIRE DISC TO CRIMP HEIGHT REFERENCE SETTING FOR LARGEST WIRE SIZE. CRIMP HEIGHT REFERENCE SETTINGS GREATER THAN THE VALUE SHOWN MAY CAUSE DAMAGE TO THE CRIMP TOOLING, REFER TO THE INSTRUCTION SHEET FOR PROPER SETUP AND ADJUSTMENTS.

| LOC | DIST | REVISIONS |             |    |      |
|-----|------|-----------|-------------|----|------|
| A   | 66   | REV       | DATE        | BY | APPV |
|     |      | -         | SEE SHEET 1 | -  | -    |

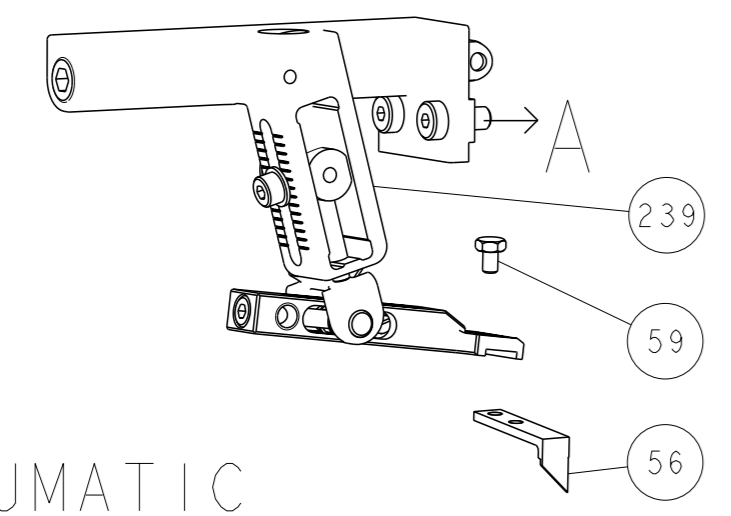
|   |     |     |             |                                     |     |
|---|-----|-----|-------------|-------------------------------------|-----|
| - | 1   | 1   | 2119082-9   | CAM, SNAIL, INSULATION ADJUSTMENT   | 244 |
| - | 1   | 1   | 2079764-1   | WASHER, WAVE SPRING, CREST-TO-CREST | 243 |
| - | 1   | 1   | 2119083-1   | RETAINER, INSULATION DIAL           | 242 |
| - | 1   | 1   | 7-18023-7   | SCR, SKT HD CAP M3 X 4.0            | 241 |
| - | -   | 1   | 2119580-1   | MECHANICAL FEED ASSEMBLY            | 239 |
| - | 1   | -   | 2844940-1   | AIR FEED MODULE                     | 238 |
| - | 1   | 1   | 993111-1    | PIN, SLOTTED SPRING 3.0 X 20.0      | 177 |
| - | 1   | 1   | 8-22280-7   | SPRING, COMPRESSION                 | 176 |
| - | 1   | 1   | 1752353-2   | GUIDE PIN, HOLDDOWN                 | 175 |
| - | 1   | 1   | 1901680-2   | GUIDE PIN, HOLDDOWN                 | 174 |
| - | REF | REF | 994970-2    | COUNTER, MAGNETIC                   | 164 |
| - | 1   | -   | 2119641-2   | FEED CAM, AIR FEED                  | 151 |
| - | 1   | 1   | 2168083-8   | SCR, SKT HD CAP, RoHS, M4 X 16      | 144 |
| - | 2   | 2   | 2168083-9   | SCR, SKT HD CAP, RoHS, M4 X 20      | 143 |
| - | -   | 1   | 2119653-2   | FEED CAM, POST FEED                 | 142 |
| - | 1   | 1   | 1-1803583-0 | APPLICATOR BASIC ASSEMBLY, SF       | 141 |
| - | 1   | 1   | 1803516-1   | RAM ASSEMBLY, SF PACIFIC            | 140 |
| - | 1   | 1   | 1-18028-2   | WASHER, FLAT, REG M4                | 119 |
| - | 1   | 1   | 2844908-1   | SCREW, LOCKING                      | 99  |
| - | 1   | 1   | 2844907-1   | POST, LOCKING                       | 98  |
| - | 1   | 1   | 455888-4    | SPACER, CRIMPER                     | 82  |
| - | 1   | 1   | 1803607-3   | DOCUMENTATION PACKAGE               | 71  |
| - | 1   | 1   | 2119740-1   | TAG, IDENTIFICATION                 | 67  |
| - | 2   | 2   | 2168078-1   | SCREW, DRIVE, RH, RoHS, 2 x .188    | 66  |
| - | 1   | 1   | 5-18022-5   | SCR, HEX HD CAP, M4 X 6.0           | 59  |
| - | 1   | 1   | 1338685-1   | PAWL, FEED                          | 56  |
| - | 1   | 1   | 1-5018030-0 | NUT, HEX, REG, RoHS, M3.5           | 52  |
| - | 1   | 1   | 1901681-1   | HOLDDOWN, TERMINAL                  | 51  |
| - | 1   | 1   | 1-1752354-5 | STANDOFF, HOLD-DOWN                 | 50  |
| - | 1   | 2   | 18023-9     | SCR, SKT HD CAP M4 X 6.0            | 49  |
| - | -   | 1   | 2119652-1   | FEED CAM, PRE FEED                  | 48  |
| - | 1   | 1   | 1803602-1   | SCR, BHSC, RoHS (M8 X 25)           | 41  |
| - | 1   | 1   | 3-1752356-4 | SUPPORT, TERMINAL                   | 34  |
| - | 2   | 2   | 2079383-5   | SCR, BHSC, RoHS (M4 X 20)           | 33  |
| - | 2   | 2   | 2-2844962-6 | SPACER, CYLINDRICAL, STRIP GUIDE    | 30  |
| - | 1   | 1   | 2844992-1   | ASSEMBLY, STRIP GUIDE               | 29  |
| - | 1   | 1   | 1-455888-0  | SPACER, CRIMPER                     | 28  |
| - | 1   | 1   | 1320928-2   | STRIP GUIDE                         | 24  |
| - | 1   | 1   | 2168083-2   | SCR, SKT HD CAP, RoHS, M4 X 8.0     | 21  |
| - | 1   | 1   | 1-18028-2   | WASHER, FLAT, REG M4                | 20  |
| - | 1   | 1   | 2119533-1   | STRIPPER, SIDE FEED                 | 19  |
| - | 1   | 1   | 2119806-1   | INSERT, SHEAR                       | 13  |
| - | 1   | 1   | 3-22280-3   | SPRING, COMPRESSION                 | 12  |
| - | 1   | 1   | 1-356885-4  | STOP, SHEAR                         | 11  |
| - | 1   | 1   | 2119805-1   | SHEAR HOLDER, FRONT                 | 10  |
| - | 1   | 1   | 454276-5    | FLOATING SHEAR, FRONT               | 9   |
| 1 | 1   | 1   | 2-1633927-1 | ANVIL, COMBINATION                  | 8   |
| - | -   | -   | -           | -                                   | 7   |
| - | -   | -   | -           | -                                   | 6   |
| - | 1   | 1   | 2119757-4   | DEPRESSOR, SHEAR                    | 5   |
| - | 1   | 1   | 3-238011-3  | BLOCK, CRIMPER SPACER               | 4   |
| 1 | 1   | 1   | 5-1633961-6 | CRIMPER, INSULATION F PREMIUM       | 3   |
| - | -   | -   | -           | -                                   | 2   |
| 1 | 1   | 1   | 1-456403-6  | CRIMPER, WIRE PREMIUM               | 1   |

PACIFIC VERSION  
Shown on sheets 3 of 4 & 4 of 4  
(Atlantic version shown on sheets 1 of 4 & 2 of 4)

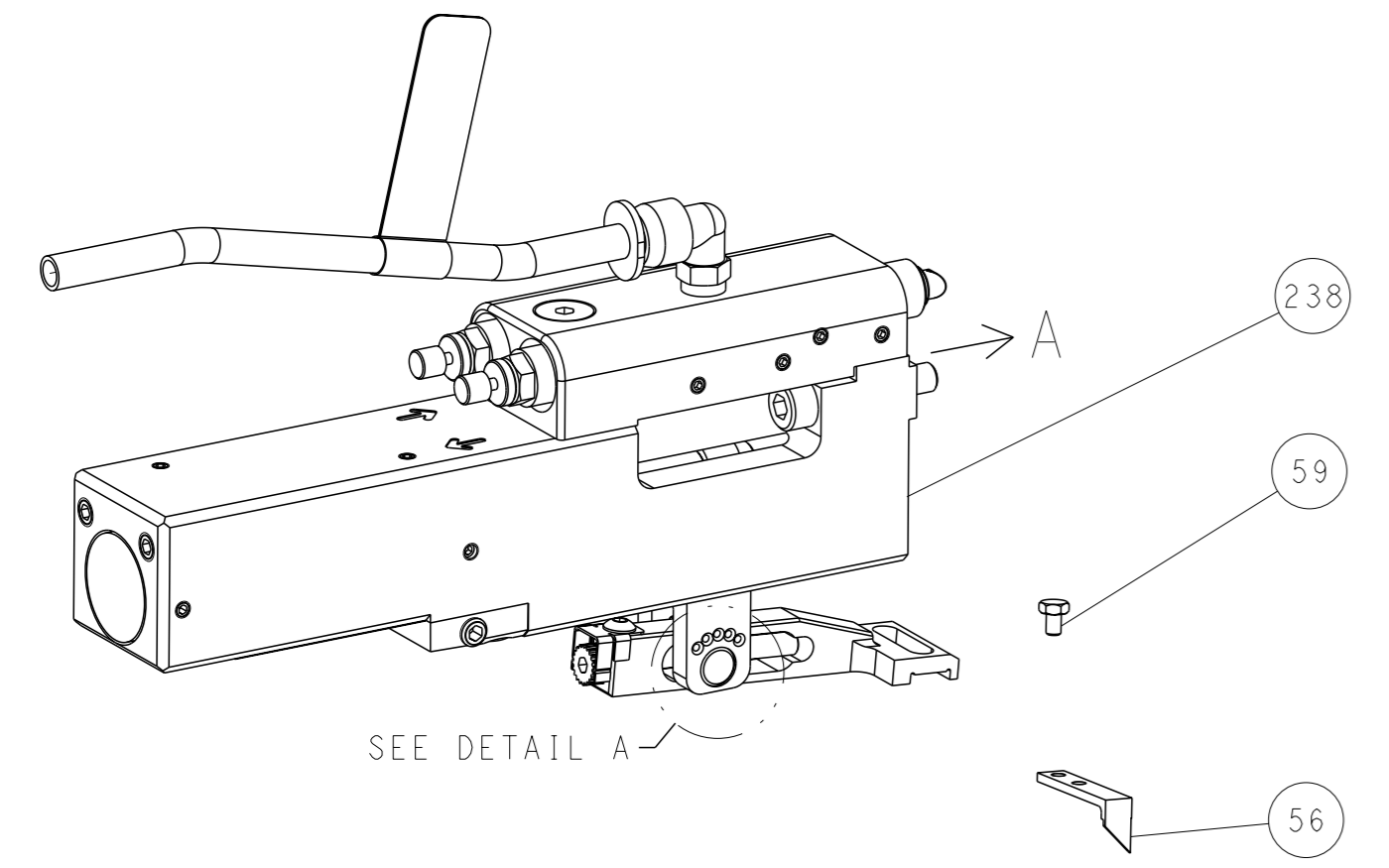
|             |         |  |         |                  |           |   |
|-------------|---------|--|---------|------------------|-----------|---|
| DIMENSIONS: |         | TOLERANCES UNLESS OTHERWISE SPECIFIED: |         | OWN              | 30AUG2012 | TE Connectivity<br>Harrisburg, PA 17105-3608                        |
| mm          | 0 PLC ± | 1 PLC ±                                | 2 PLC ± | CHK              | 31AUG2012 |   |
|             | 3 PLC ± | 4 PLC ±                                | 5 PLC ± | APPV             | 31AUG2012 |   |
|             | ANGLES  | FINISH                                 |         | NAME             |           |   |
| MATERIAL    |         |  |         | PRODUCT SPEC     |           | Ocean Side Feed<br>Applicator                                       |
|             |         |  |         | APPLICATION SPEC |           |   |
|             |         |  |         | WEIGHT           |           | SIZE CAGE CODE DRAWING NO RESTRICTED TO                             |
|             |         |  |         |                  |           | A1 00779 C=2151753  |
|             |         |  |         |                  |           | Customer Accessible Production Drawing SCALE 1:2 SHEET 3 of 4 REV D |

| LOC |    | DIST |     | REVISIONS   |      |     |      |
|-----|----|------|-----|-------------|------|-----|------|
| A   | 66 | P    | LYR | DESCRIPTION | DATE | OWN | APVD |
|     |    | -    |     | SEE SHEET 1 | -    | -   | -    |

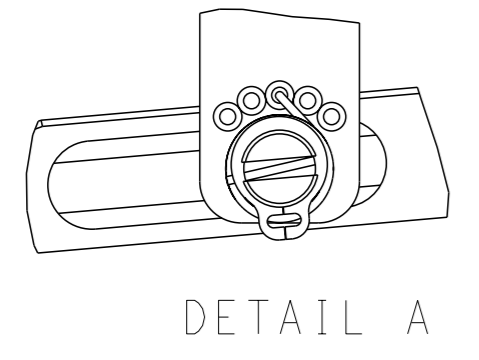
# FEED TYPE MECHANICAL



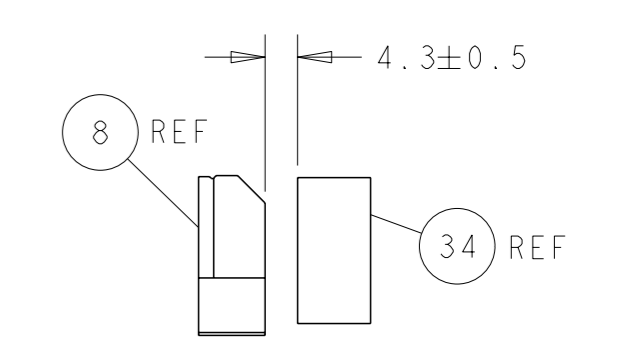
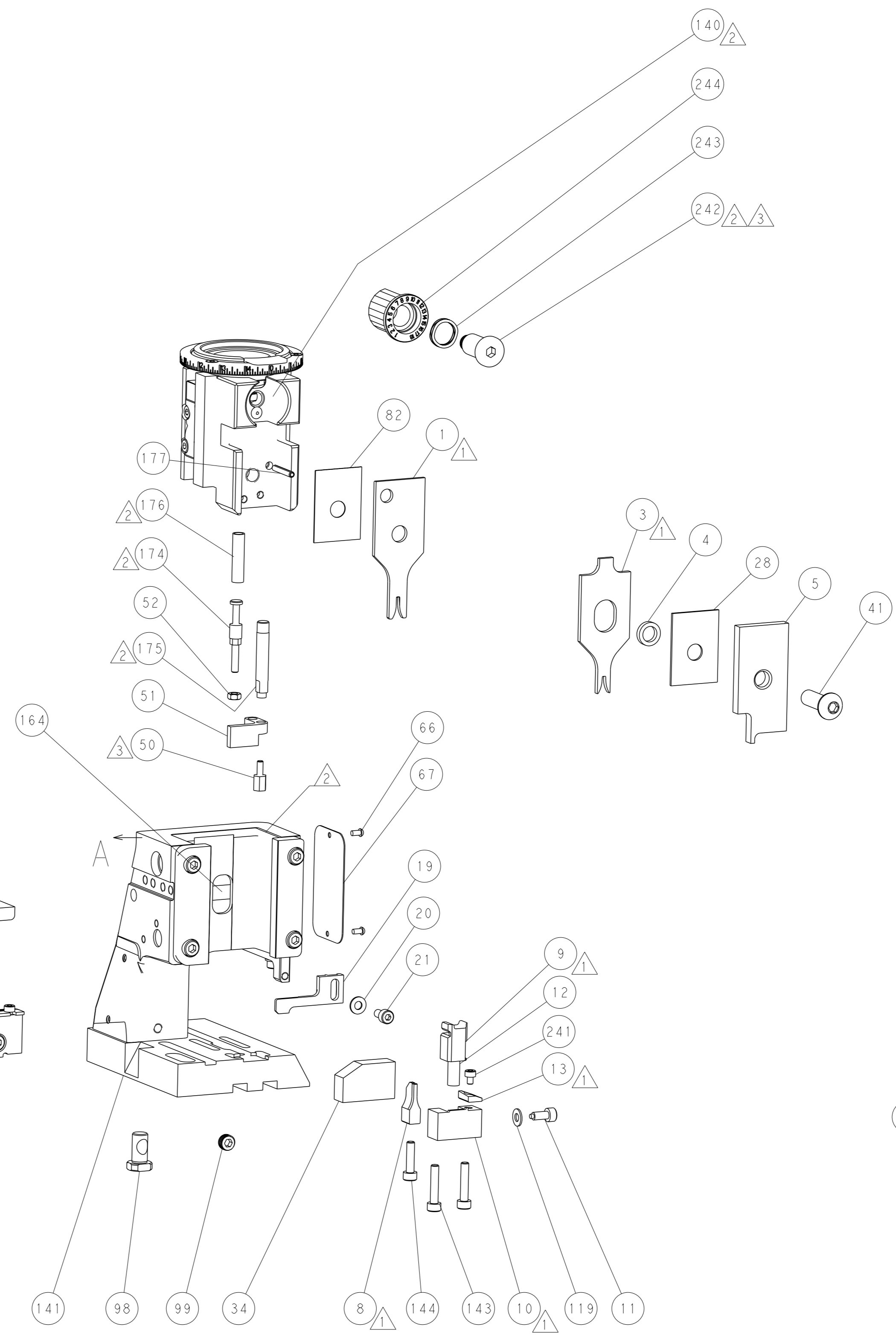
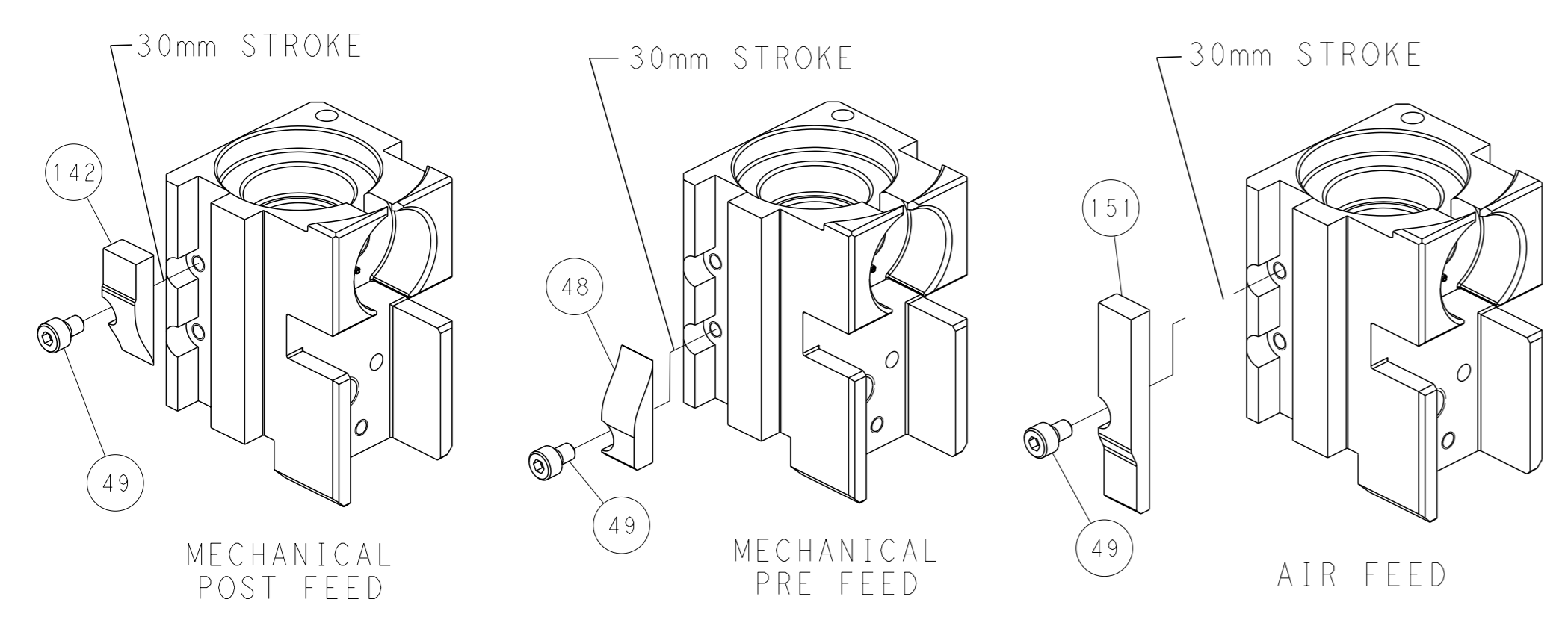
## PNEUMATIC



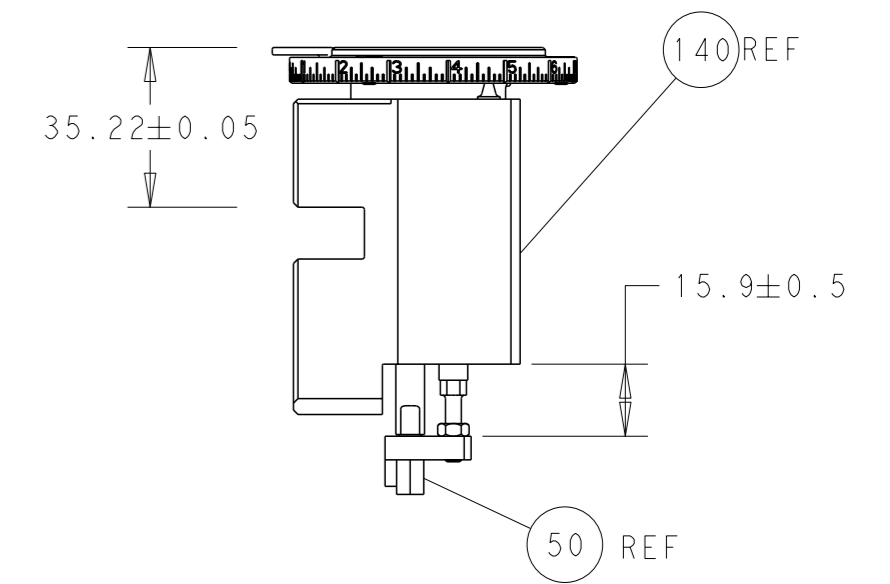
## FEED SPRING SETTING POSITION (SHOWN FROM REAR SIDE)



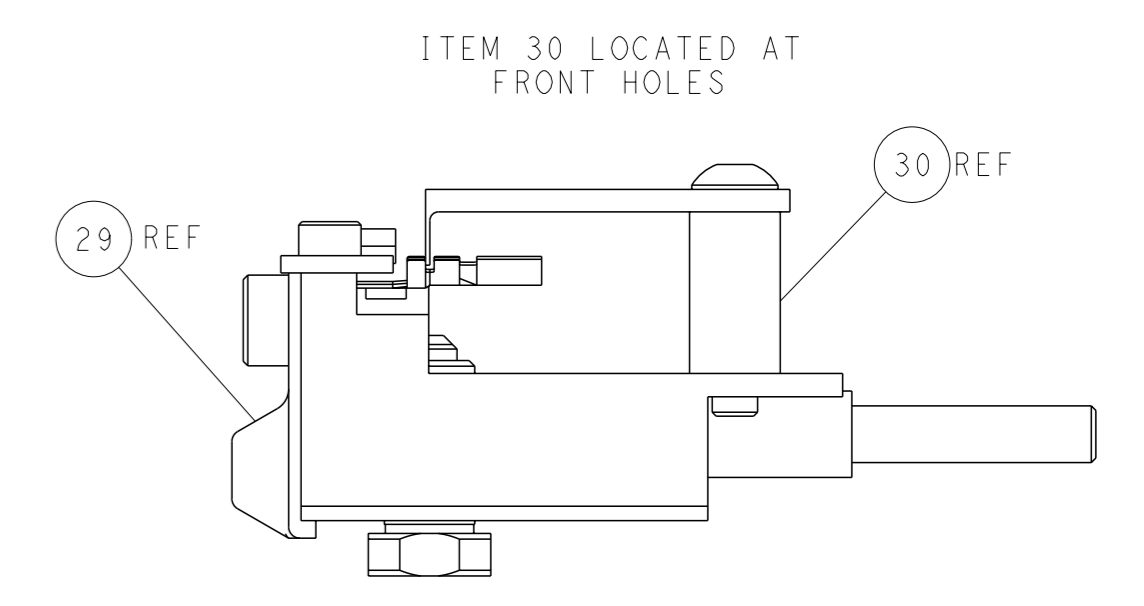
# CAM POSITIONS



TERMINAL SUPPORT LOCATION



RAM AND HOLDDOWN SET-UP



FEED TRACK POSITION GUIDE BY INSULATION BARREL

**PACIFIC VERSION**  
 Shown on sheets 3 of 4 & 4 of 4  
 (Atlantic version shown on sheets 1 of 4 & 2 of 4)

|   |  |   |  |
|---|--|---|--|
| <small>THIS DRAWING IS A CONTROLLED DOCUMENT FOR TYCO ELECTRONICS CORPORATION. IT IS SUBJECT TO CHANGE AND THE USER'S RESPONSIBILITY TO OBTAIN THE LATEST REVISION SHOULD BE CONTACTED FOR THE LATEST REVISION.</small> |  | DWN: HOFFNER 30AUG2012<br>CHK: TELBIN 31AUG2012<br>APVD: TELBIN 31AUG2012 | TE Connectivity<br>Harrisburg, PA 17105-3608 |
| DIMENSIONS: mm<br>TOLERANCES UNLESS OTHERWISE SPECIFIED:<br>0 PLC ±<br>1 PLC ±<br>2 PLC ±<br>3 PLC ±<br>4 PLC ±<br>ANGLES FINISH ±  | NAME: Ocean Side Feed Applicator<br>APPLICATION SPEC: -<br>SIZE: A1<br>CAGE CODE: 00779<br>DRAWING NO: 2151753 | WEIGHT: -<br>SCALE: 1:2<br>SHEET: 4 of 4<br>REV: D                        | RESTRICTED TO: -                             |
| MATERIAL: -   |  | Customer Accessible Production Drawing                                    |  |