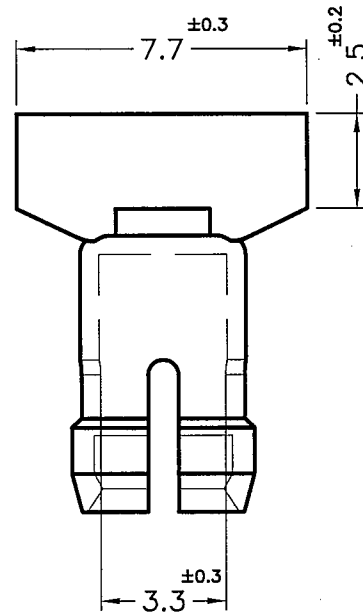
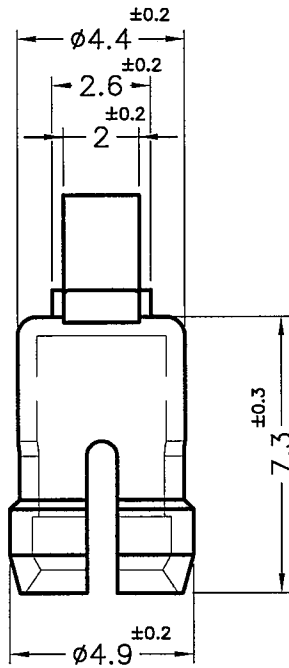
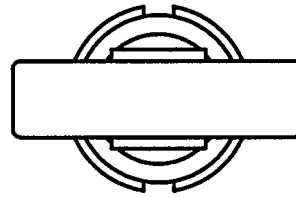


MOUNTING HOLE



CHASSIS $\phi 4.4$
 THICKNESS 1.57~3.2mm

NOTE:MADE OF EQUIVALENT MATERIAL.
 使用同等材質



康揚企業股份有限公司
 KANG YANG HARDWARE ENTERPRISE CO., LTD.
 康揚塑膠(東莞)有限公司
 KANG YANG PLASTIC(DONG GUAN)CO.,LTD.
 康哲電腦配件(吳江)有限公司
 KANG CHE COMPUTER COMPONENTS(WUJIANG)CO.,LTD.

| | | | | | | | | |
|---|----------|------------|---------------------------------------|-------------|----------|--------|------------|--------|
| PROPRIETARY AND CONFIDENTIAL THE INFORMATION CONTAINED IN THIS DRAWING IS THE SOLE PROPERTY OF KANG YANG HARDWARE ENTERPRISE CO. ANY REPRODUCTION IN PART OR AS A WHOLE WITHOUT THE WRITTEN PERMISSION OF KANG YANG HARDWARE ENTERPRISE CO. IS PROHIBITED. DO NOT SCALE DRAWING | DATE | 2016.08.17 | TITLE | LENS CAP | DWG. NO. | LC3-12 | PART NO. | LC3-12 |
| | DRAWN | T.C | MATERIAL | PC UL94V-2 | SIZE | A4 | SPEC. DWG. | REV |
| | CHECKED | 林祺翔 | COLOR | TRANSPARENT | FINISH | | | A |
| | APPROVED | Kang | UNLESS OTHERWISE SPECIFIED TOLERANCE: | SEE ABOVE | SCALE: | 5:1 | UNIT | mm |