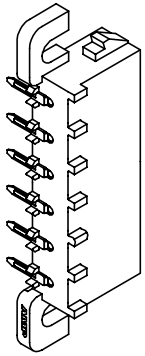
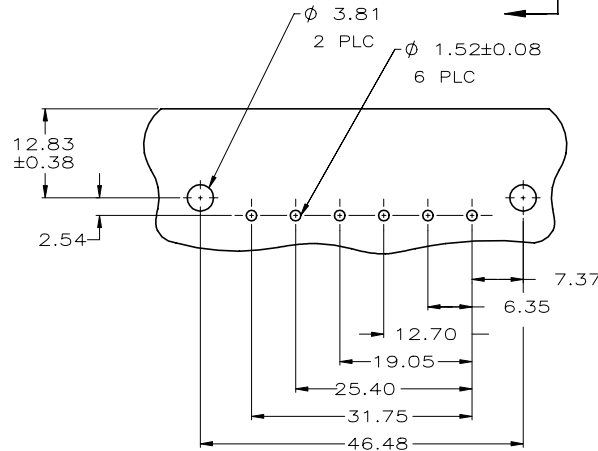
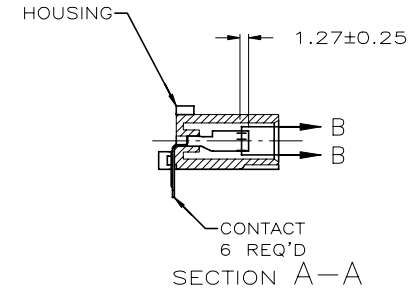
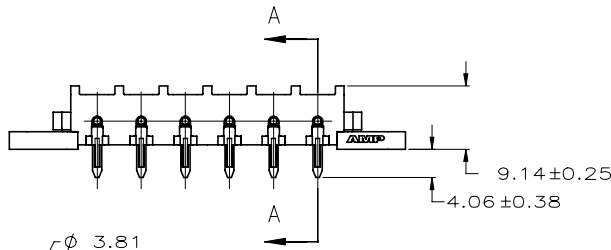
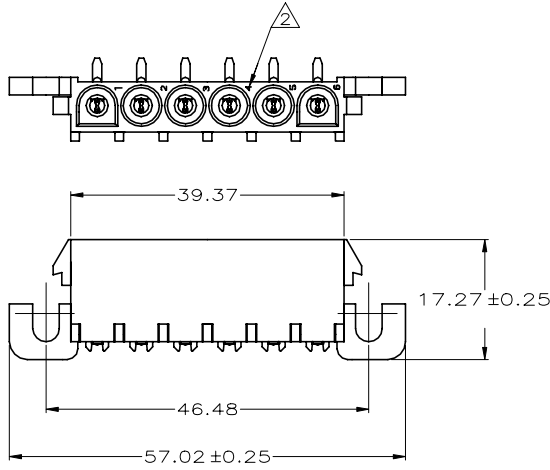


REVISIONS				
REV	LR	DESCRIPTION	DATE	APP'D
B1		REVISED PER ECR-21-119230	02NOV2021	SS VS

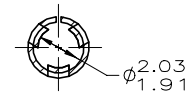
- PARTS COMPLY WITH AMP SOLDERABILITY SPECIFICATION 109-11-5.
- CIRCUIT IDENTIFICATION CHARACTERS ARE ADJACENT TO THE INDICATED CAVITIES, BUT LOCATION AND ORIENTATION MAY DIFFER FROM PRINT.
- FLAMMABILITY V2 FOR THICKNESS 0.38mm, 1.5mm, and 3.0mm PER IEC 60695-11-10.
- GLOW-WIRE FLAMMABILITY (GWFI) 800°C FOR THICKNESS 0.38mm AND 0.75mm PER IEC 60695-2-12.
- GLOW-WIRE FLAMMABILITY (GWFI) 960°C FOR THICKNESS 1.5mm AND 3.0mm PER IEC 60695-2-12.
- GLOW-WIRE IGNITION (GWIT) 825°C FOR THICKNESS 0.38mm, 0.75mm, 1.5mm AND 3.0mm PER IEC 60695-2-13.
- DIMENSIONS SHOWN REPRESENT PRODUCT IN DRY CONDITION. ADDITIONAL 2% GROWTH DUE TO END USE LOCATION MOISTURE ABSORPTION MAY OCCUR AND SHOULD BE ACCOUNTED FOR.



3-DIMENSIONAL MODEL NTS



RECOMMENDED MOUNTING HOLE PATTERN FOR 1.57 THICK P.C. BOARD



SECTION B-B SCALE 6:1

3.81	.150	57.02	2.245
2.54	.100	46.48	1.830
2.03	.080	39.37	1.550
1.91	.075	31.75	1.250
1.57	.062	25.40	1.000
1.52	.060	19.05	.750
1.27	.050	17.27	.680
0.38	.015	12.83	.505
0.25	.010	12.70	.500
0.13	.005	9.14	.360
0.08	.003	7.37	.290
0.00127	0.000050	6.35	.250
0.00076	0.000030	4.06	.160
MM	IN	MM	IN

CONVERSION TABLE



THIS DRAWING IS A CONTROLLED DOCUMENT.		DWG: K. WHITAKER 14MAR2008	
DIMENSIONS: mm		CHK: D. COLEY 14MAR2008	
TOLERANCES UNLESS OTHERWISE SPECIFIED:		APP'D: D. COLEY 14MAR2008	NAME: D. COLEY
0 PLC ± -		PRODUCT SPEC: -	
1 PLC ± -		APPLICATION SPEC: -	
2 PLC ± 0.13		WEIGHT: 0.000000	
3 PLC ± -		SIZE: A2	
4 PLC ± -		CAGE CODE: 00779	
ANGLES ± -		DRAWING NO: 1586937	
MATERIAL: SEE TABLE		RESTRICTED TO: -	
FINISH: SEE TABLE		CUSTOMER DRAWING	
		SCALE: 2:1 SHEET: 1 of 1 REV: B1	