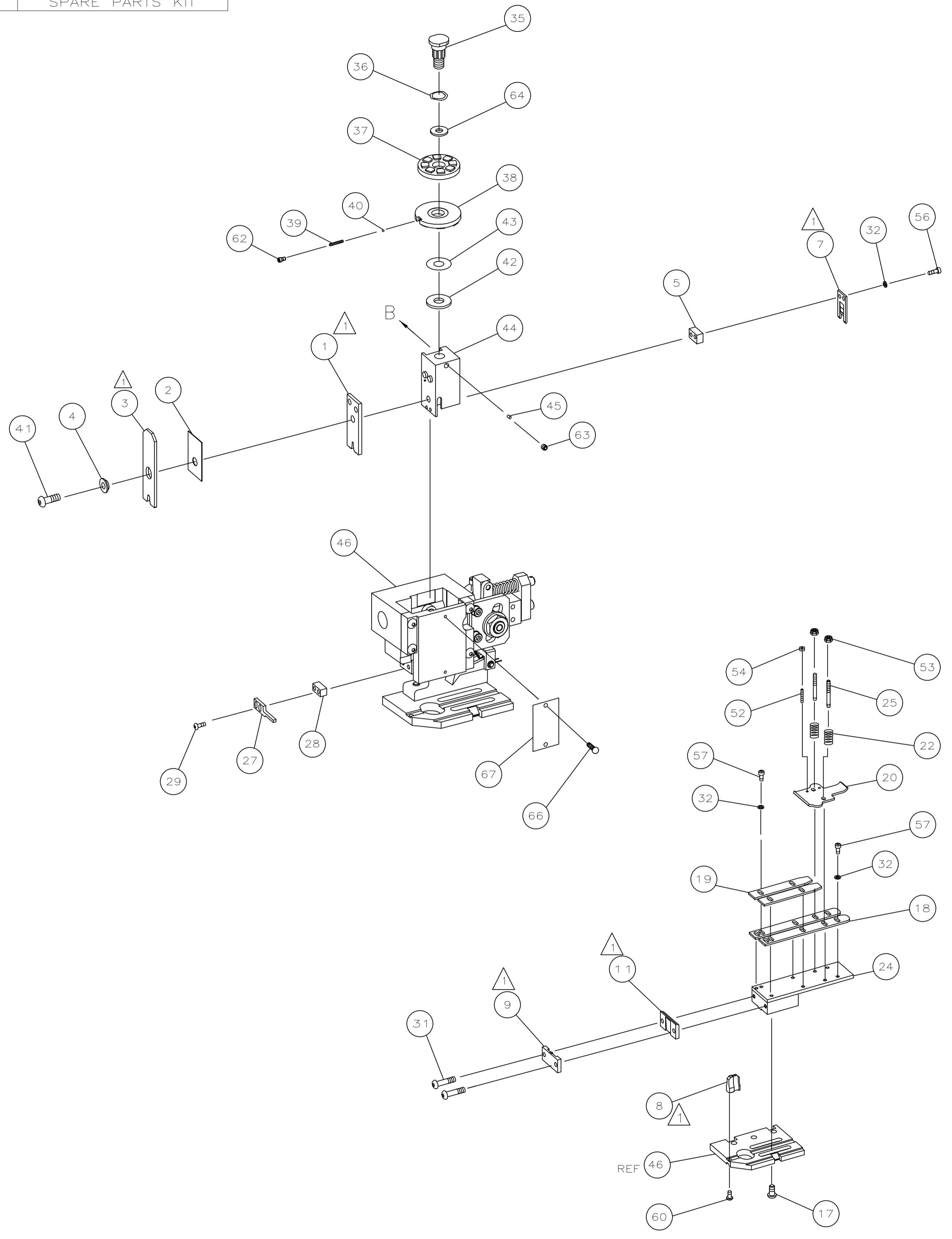
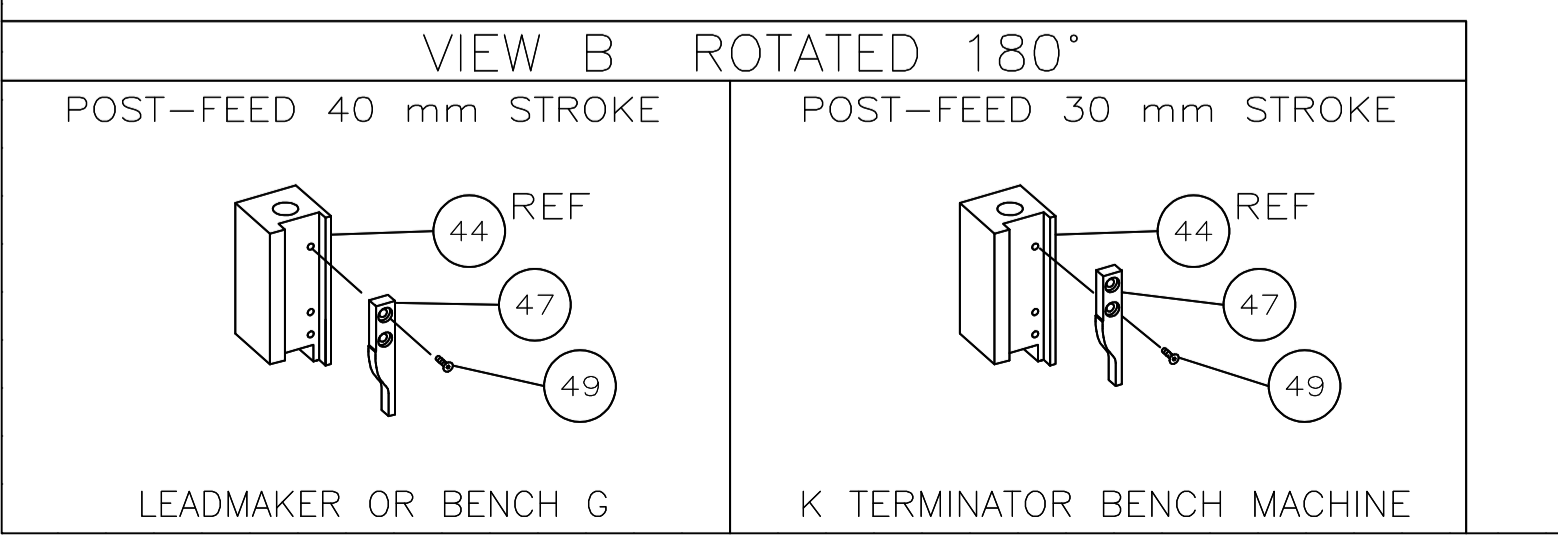


PART NUMBER	REV	FIRST USED	TERMINATOR	FEED TYPE	DESCRIPTION
1339699-1	C		- BENCH & LEADMAKER	MECH POST FEED	HD-I APPLICATOR
7-1339699-1	C		- BENCH & LEADMAKER	MECH POST FEED	-1 AND SPARE PARTS
7-1339699-7	A		-	-	SPARE PARTS KIT

CRIMP DATA AMP TERMINAL AMP CRIMP SPECS			
TERMINAL NAME: RING TONGUE			
CRIMP	SIZE	TYPE	RANGE
WIRE	4.57 [.180 IN]	F	2.00-5.00mm <sup>2</sup>
INSUL	6.35 [.250 IN]	0	2.54-4.06 [.100-.160 IN]
WIRE STRIP LENGTH		APPL INSTRUCTION	
4.80-5.60 [.189-.220 IN]		408-8323	
TERMINAL APPL SPEC		FEED	
114-3118		20.75 [.816 IN]	
TERMINALS APPLIED			
140533	-	-	-
140534	-	-	-
140535	-	-	-
140536	-	-	-
140537	-	-	-
140538	-	-	-
140541	-	-	-
140542	-	-	-
WIRE SIZE mm <sup>2</sup> AWG	CRIMP HEIGHT	PIN PN AND LENGTH [IN]	
5.00mm <sup>2</sup>	2.74 ±0.05 [.108 ±.002 IN]	4-354778-1 [.2700]	
3.50mm <sup>2</sup>	2.61 ±0.05 [.103 ±.002 IN]	5-354778-1 [.2750]	
2.50mm <sup>2</sup>	2.51 ±0.05 [.099 ±.002 IN]	5-354778-9 [.2790]	
2.00mm <sup>2</sup> OR 14AWG	2.46 ±0.05 [.097 ±.002 IN]	6-354778-3 [.2810]	

SET UP GAGE	LAYOUT
458638-3	L1339699

- RECOMMENDED SPARE PARTS.
- GREASE RAM, CAM, CAM FOLLOWER AND FEED ROD LIGHTLY.
  - LUBRICATE DAILY PER THE APPLICATOR INSTRUCTION SHEET SUPPLIED WITH THE APPLICATOR.



QTY REQD PER ASSY	PART NO	DESCRIPTION	ITEM NO
-	1	1	73
-	1	1	72
-	1	1	71
-			70
-			69
-			68
-	1	1	67
-	2	2	66
-			65
-	1	1	64
-	1	1	63
-	1	1	62
-			61
-	1	1	60
-			59
-			58
-	6	6	57
-	2	2	56
-			55
-	2	2	54
-	2	2	53
-	2	2	52
-			51
-			50
-	1	1	49
-			48
-	1	1	47
-	1	1	46
-	1	1	45
-	1	1	44
-	1	1	43
-	1	1	42
-	1	1	41
-	1	1	40
-	1	1	39
-	1	1	38
-	1	1	37
-	1	1	36
-	1	1	35
-			34
-			33
-	8	8	32
-	2	2	31
-			30
-	2	2	29
-	1	1	28
-	1	1	27
-			26
-	2	2	25
-	1	1	24
-			23
-	2	2	22
-			21
-	1	1	20
-	2	2	19
-	2	2	18
-	4	4	17
-			16
-			15
-			14
-			13
-			12
-	1	1	11
-	1	1	10
-	1	1	9
-	1	1	8
-	1	1	7
-			6
-	1	1	5
-	1	1	4
-	1	2	3
-	1	1	2
-	1	2	1
-	1	1	1
-	77	71	-1

THIS DRAWING IS A CONTROLLED DOCUMENT.

DN M. CLIFFORD 24FEB03  
 CHK: -  
 Tyco Electronics Corporation  
 Harrisburg, PA 17105-3608

APVD F. BACKHURST 24FEB03  
 NAME: END FEED HD-I APPLICATOR

PRODUCT SPEC: -  
 APPLICATION SPEC: -  
 SIZE: A1  
 CAGE CODE: 00779  
 DRAWING NO: 1339699

MATERIAL: - FINISH: -  
 WEIGHT: -  
 CUSTOMER DRAWING: -  
 SCALE: - SHEET 1 OF 1 REV C