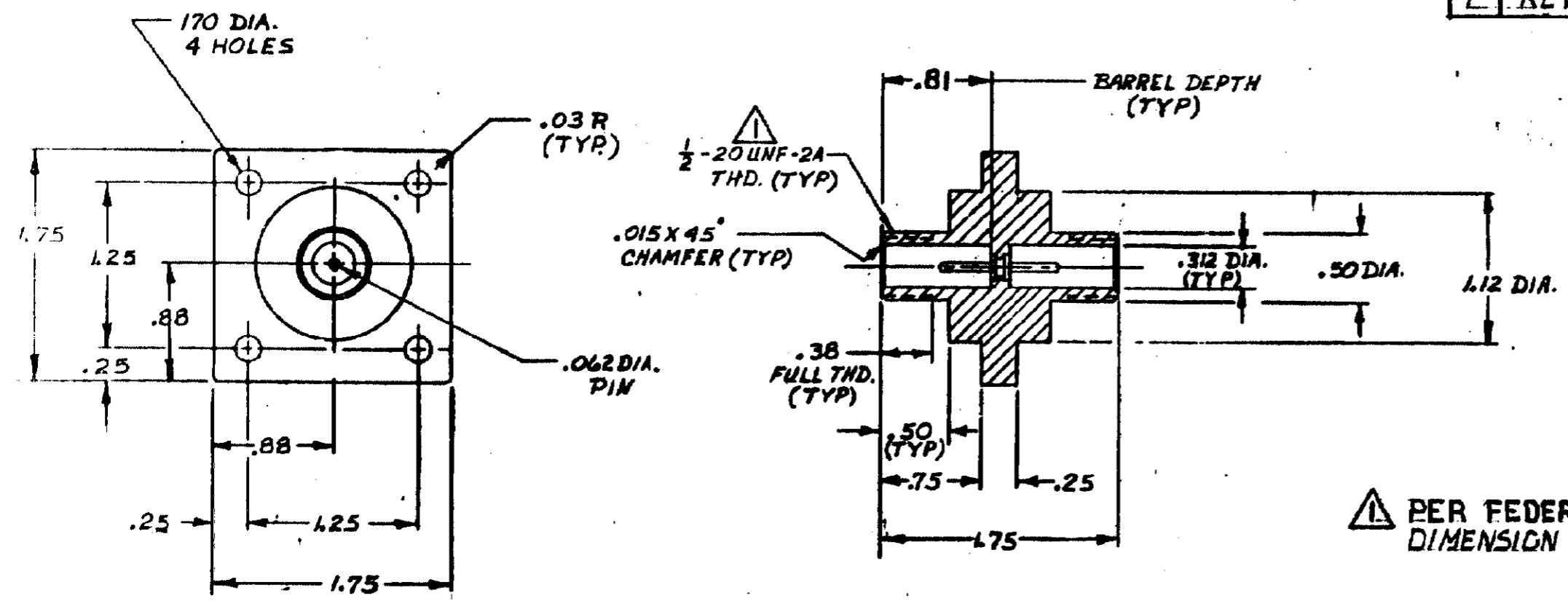


DESIGNED BY AMP INCORPORATED. ALL RIGHTS RESERVED. AMP PRODUCTS COVERED BY PATENTS AND/OR PATENTS PENDING.

THIS PRODUCT DESIGNED AND BUILT BY AMP INCORPORATED. NO LICENSE TO USE THAT DESIGN IN MANUFACTURE, OR TO USE ANY ISSUED OR PENDING PATENTS WHICH ARE INVOLVED, IS IMPLIED.

REVISIONS			
LTR	DESCRIPTION	DATE	APPROVED
B	REDRAWN; WAS G-10	10/20/72	M.H.
C	DELETED RAISED ENGRAVING	1-5-73	Karkh
D	UP-DATED	7/10/77	Y.M.F.
E	OBSOLETE -2 ECN 53622	11-12-84	R.S.
E	REV PER ECN 5-3960	4-15-87	R.S.



PER FEDERAL STANDARD H-28 3 WIRE METHOD DIMENSION OVER WIRES TO BE: .497-.510.

2. RECEPTACLE TO MATE WITH AMP LGH-1L LEAD ASSEMBLY. AVAILABLE SEPARATELY. WHEN MATING LEAD ASSEMBLY WITH RECEPTACLE, APPLY SILICONE GREASE PER 830900 INSTRUCTIONS.

OBSOLETE	830050-2	AS SHOWN, PIN GOLD PLATED
	830050-1	AS SHOWN, PIN TIN PLATED

QTY REQD	TY REQD	PART OR IDENTIFYING NO.	NOMENCLATURE OR DESCRIPTION
LIST OF MATERIALS OR PARTS LIST			

UNLESS OTHERWISE SPECIFIED: DIMENSIONS ARE IN INCHES TOLERANCES .00 .01 .02 .0000 .0005 .000 .0005 .0010 .0015 .0020		DR. J.S. 4-7-65 CHK APPD J.W. GAW 4-8-65 APPD DESGN APPD OTHER APPD	<b>AMP</b> AMP INCORPORATED CAPITRON DIVISION ELIZABETHTOWN, PENNSYLVANIA NAME <b>LGH-1L RECEPTACLE</b> (FOR BULK HEAD APPLICATION)
MATERIAL <b>GLASS EPOXY (MOLDED)</b> <b>BLACK</b>		SIZE <b>B</b> CODE IDENT NO. <b>8300</b> NUMBER <b>830050</b>	SCALE 1/1 WT SHEET 1 OF 1
AMP INFO LOC L1 PRINT/DIST 37	NEXT ASSY USED ON APPLICATION	CUSTOMER DRAWING	

DELETED