

### Features

- Low Loss
- Excellent Return Loss
- High Rejection

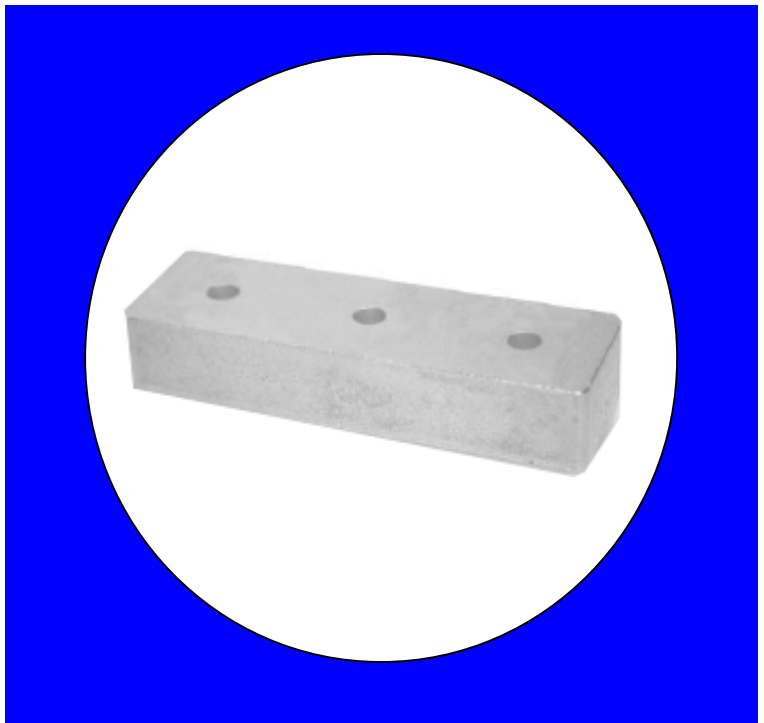
### Description

Rugged mount, silver (Ag) coated ceramic filter. Developed for use in GPS L2 military applications.

Weight: 13.6 grams typical

Material: Filter is composed of a ceramic block plated with Ag.

Filter complies with RoHS standards.



### Electrical Specifications

Parameter	Frequency (MHz)	Typical @ 25°C	Spec. @ 25°C
Passband Insertion Loss	1217.6-1237.6	0.7 dB	1.0 dB max
Passband Return Loss	1212.6-1242.6	15.0 dB	12.0 dB min
Attenuation	1152.6	31.0 dB	29.0 dB min
Attenuation	1302.6	31.0 dB	29.0 dB min
Power Rating			1W
Impedance			50Ω

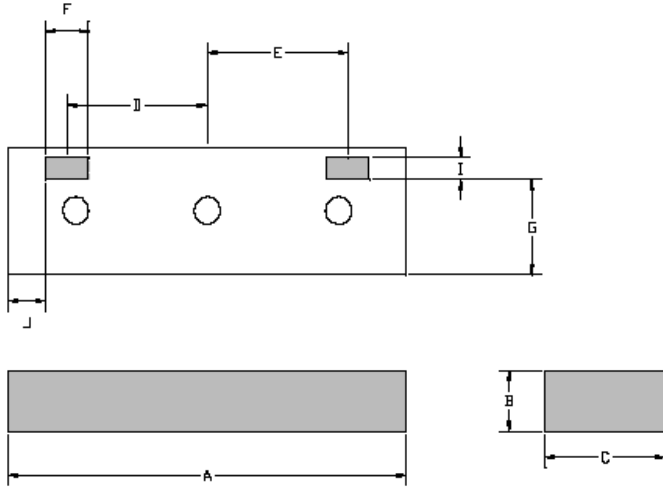
Note: Supplier shall test each filter to the critical electrical specifications of the above table. Any subsequent audits may deviate from in value due to measurement repeatability among different test systems. Such deviations shall not exceed the following limits:

Specification Allowance	
Insertion Loss	0.1 dB
Return Loss	1.0 dB
Stopbands	1.0 dB

\*This product is covered by one or more of the following U.S. and foreign patents including: US 4,692,726;US 4,742,562; US 4,800,348;US 4,829,274;US 5,146,193;EP 0573597;DE 0573597;FR 0573597;JP 508149/92;KR 142171;US 5,162,760;US 5,218,329;US 5,250,916;US 5,327,109;US 5,488,335;CA 2114029;FR 9306297;GB 2273393;JP 3205337;KR 115113;CN 93106228.4;US 5,512,866;EP 0706719;DE 0706719;FR 0706719;GB 0706719;CN 95190359.4;US 5,602,518;US 5,721,520;US 5,745,018;EP 0910875;DE 0910875;DK 0910875;FR 0910875;GB 0910875;IE 0910875;JP 505182/98;KR 10-323013;US 5,994,978;US 6,462,629;CN 00810420.4;US 6,559,735;US 6,650,202;US 6,834,429. Other US and foreign patents pending.

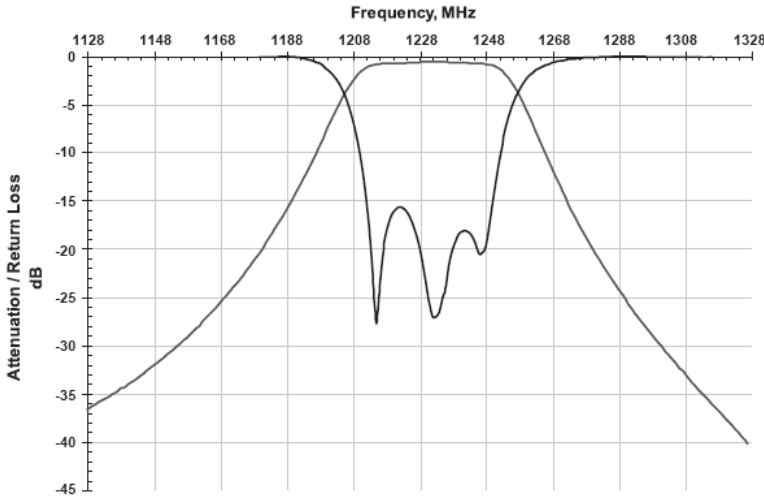
\*CTS Corporation 2006 reserves all copyrights in the layout, design and configuration of the patterns on this product.\*

### Mechanical Drawing

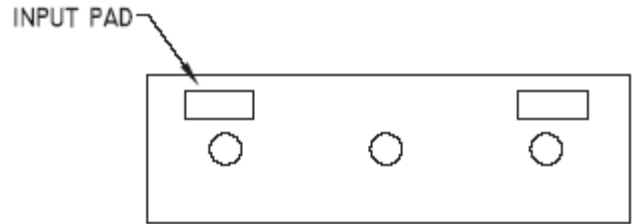


Dim	Nominal (mm)	Tolerance (mm) +/- or max
A	38.6	max
B	7.2	max
C	11.8	max
D	13.297	0.127
E	13.297	0.127
F	5.537	0.127
G	8.242	0.254
I	2.311	0.127
J	3.023	0.254

### Electrical response

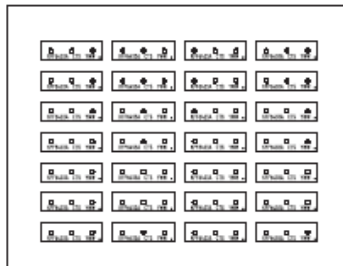


### PCB Layout



NOTE: MOUNTING IS CUSTOMER SPECIFIC.

### Packaging and Marking



7 28 Slot Foam Trays  
(560 max. per box)

This product is shipped in pre-formed foamed trays.