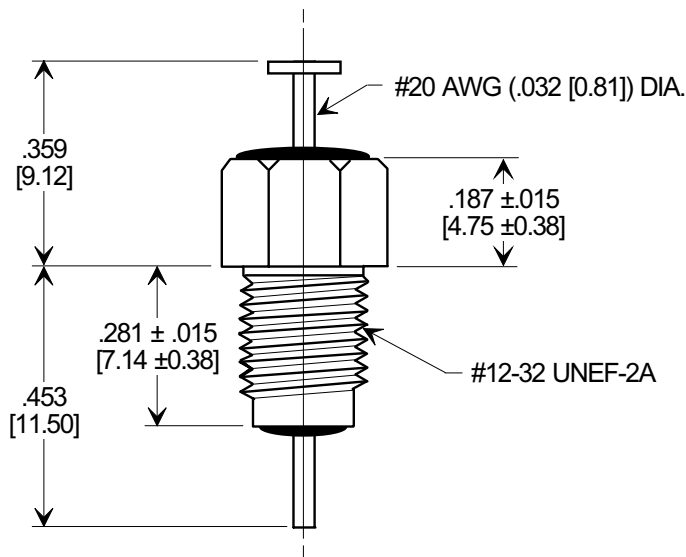
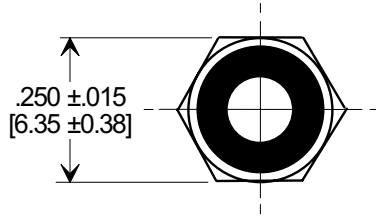
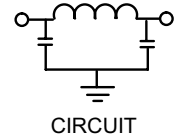
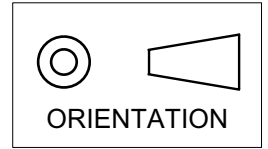


# MARKETING SALES DRAWING

DIMENSIONS IN INCHES - DO NOT SCALE THIS DRAWING  
 DIMENSIONS IN METRIC - [ ]

Electrical Testing  
 per Tusonix standard  
 test plans and Mil-Std-202  
 Test Methods.



1500	350	200	10A	5	45	70	70
	85°C	125 °C		10 MHz	100 MHz	1 GHz	10 GHz
MIN. CAP. (pF)	WORKING VOLTAGE (VDC)		CURRENT (Idc)	MINIMUM NO LOAD INSERTION LOSS (dB) AT 25°C PER MIL-STD -220			

X-2015 Rev-0

<b>REVISION RECORD</b> Original Release C.O. WAS SK 6644-001-S. L.E. 01-13-84 DIM'S & TOL'S REV'D RELEASED. S.M. 02-02-01 <b>1653</b> CURRENT UNIT "A" ADDED. L.E. 08-20-85 <b>2585</b> RDN TO COMP FMT & ADDED METRIC. S.M. 02-02-01 <b>20010202-2-01</b>	<b>0</b>	<b>1</b>	<b>2</b>	<b>3</b>	<b>4</b>
	<b>--TOLERANCES--</b> Unless Otherwise Specified				
	DECIMAL ± .031 [0.79]				
	ANGLES ±				

Title		<b>BUSHING STYLE EMI FILTER</b>	
Drawn	S.M. 02-02-01	Scale	3 X
Approved	T.C. 02-02-01		
<b>A</b>	<b>4202-001</b>		

**TUSONIX**  
 TUCSON, ARIZONA