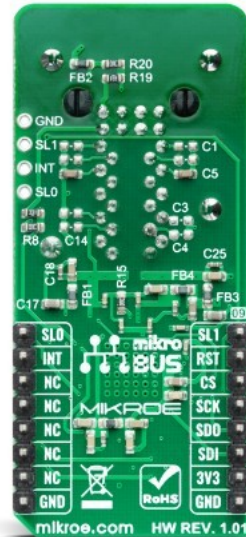


EtherCAT Click



PID: MIKROE-2851

EtherCAT Click is a compact add-on board that provides a cost-effective solution for realizing EtherCAT device solutions on various processors over the SPI interface. This board features the [LAN9252](#), a 2-port EtherCAT device controller with dual integrated Ethernet PHYs from [Microchip Technology](#). Each PHY contains a full-duplex 100BASE-TX transceiver and supports 100Mbps operation. The LAN9252 supports HP Auto-MDIX, allowing the use of direct connects or cross-over LAN cables. It communicates with MCU via a synchronous device SPI/SQI interface and can operate in Digital I/O Mode, where signals can be controlled or monitored by the EtherCAT Master. This Click board™ is suitable for industrial control, process/factory automation, hydraulic and pneumatic valve systems, power, and many more.

Mikroe produces entire development toolchains for all major microcontroller architectures.

Committed to excellency, we are dedicated to helping engineers bring the project development up to speed and achieve outstanding results.



ISO 27001: 2013 certification of informational security management system.
 ISO 14001: 2015 certification of environmental management system.
 OHSAS 18001: 2008 certification of occupational health and safety management system.



ISO 9001: 2015 certification of quality management system (QMS).

Specifications

Type	Ethernet
Applications	Can be used for industrial control, process/factory automation, hydraulic and pneumatic valve systems, power, and many more.
On-board modules	LAN9252 - 2-port EtherCAT slave controller with dual integrated Ethernet PHYs from Microchip Technology
Key Features	2/3-port EtherCAT slave controller, integrated Ethernet PHYs with HP Auto-MDIX, wake on LAN (WoL) support, high performance, synchronous slave SPI/SQI interface, and more.
Interface	SPI
ClickID	No
Compatibility	mikroBUS
Click board size	L (57.15 x 25.4 mm)
Input Voltage	3.3V

Resources

[mikroBUS™](#)

[mikroSDK](#)

[Click board™ Catalog](#)

[Click boards™](#)

Downloads

[EtherCAT click 2D and 3D files](#)

[EtherCAT click schematic](#)

[LAN9252 datasheet](#)

Mikroe produces entire development toolchains for all major microcontroller architectures.

Committed to excellency, we are dedicated to helping engineers bring the project development up to speed and achieve outstanding results.



ISO 27001: 2013 certification of informational security management system.
 ISO 14001: 2015 certification of environmental management system.
 OHSAS 18001: 2008 certification of occupational health and safety management system.



ISO 9001: 2015 certification of quality management system (QMS).