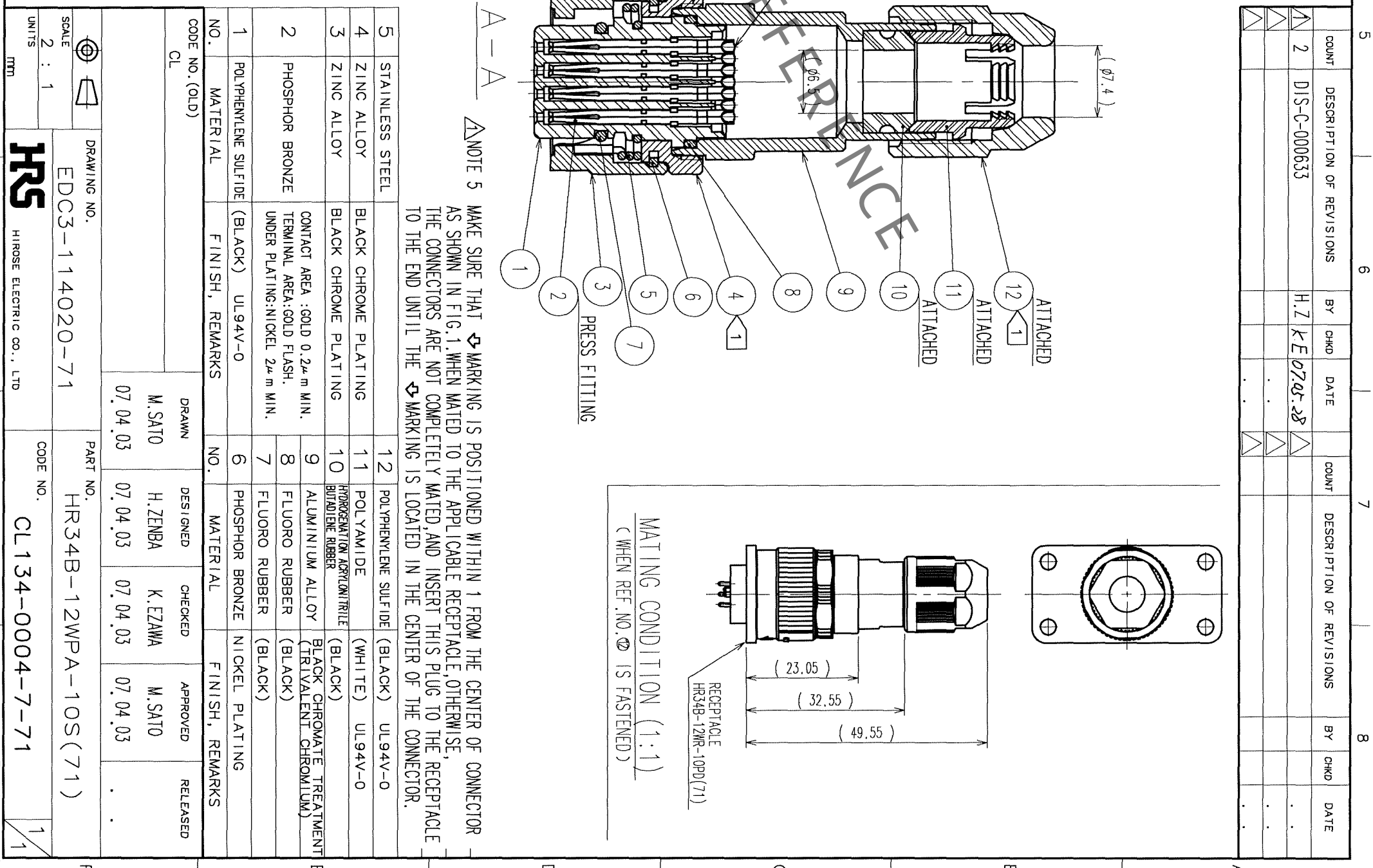
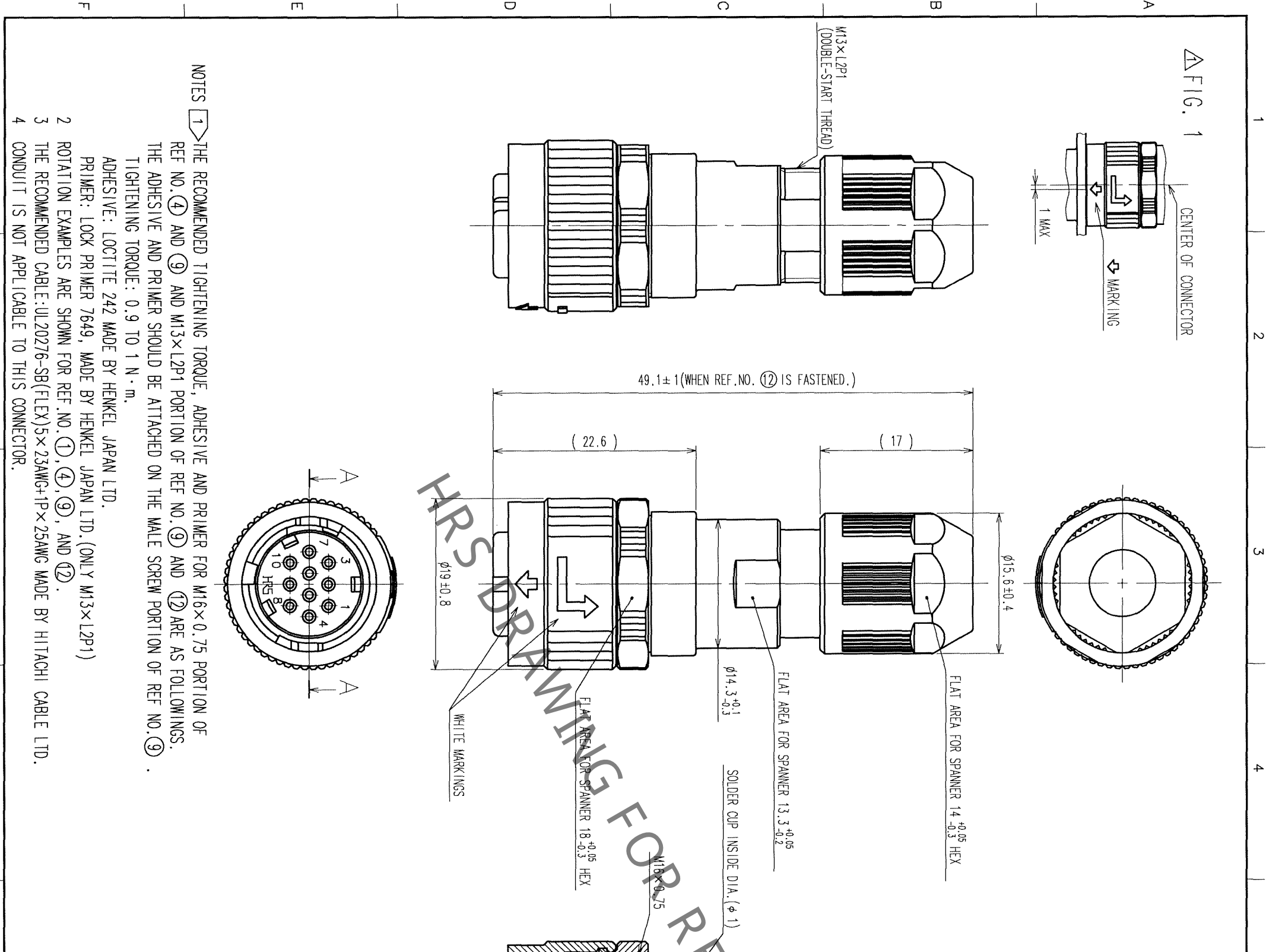


TO
R



COUNT	DESCRIPTION OF REVISIONS	BY	CHKD	DATE	COUNT	DESCRIPTION OF REVISIONS	BY	CHKD	DATE
2	DIS-C-000633	H.Z	KE	07.05.28					

NO.	MATERIAL	FINISH, REMARKS	NO.	MATERIAL	FINISH, REMARKS
1	POLYPHENYLENE SULFIDE	(BLACK) UL94V-0	6	PHOSPHOR BRONZE	NICKEL PLATING
2	PHOSPHOR BRONZE	CONTACT AREA: GOLD 0.2μm MIN. TERMINAL AREA: GOLD FLASH. UNDER PLATING: NICKEL 2μm MIN.	7	FLUORO RUBBER	(BLACK)
3	ZINC ALLOY	BLACK CHROME PLATING	8	FLUORO RUBBER	(BLACK)
4	ZINC ALLOY	BLACK CHROME PLATING	9	ALUMINIUM ALLOY	BLACK CHROMATE TREATMENT (TRIVALENT CHROMIUM)
5	STAINLESS STEEL	BLACK CHROME PLATING	10	HYDROGENATION ACRYLONITRILE BUTADIENE RUBBER	(BLACK)
			11	POLYAMIDE	(WHITE) UL94V-0
			12	POLYPHENYLENE SULFIDE	(BLACK) UL94V-0

CODE NO. (OLD)	CL	DRAWN	DESIGNED	CHECKED	APPROVED	RELEASED
		M. SATO	H. ZENBA	K. EZAWA	M. SATO	
		07.04.03	07.04.03	07.04.03	07.04.03	

SCALE	DRAWING NO.	PART NO.
2 : 1	EDC3-114020-71	HR34B-12WPA-10S (71)
UNITS	HR3	CL134-0004-7-71
MM	HIROSE ELECTRIC CO., LTD	

NOTE 5 MAKE SURE THAT MARKING IS POSITIONED WITHIN 1 FROM THE CENTER OF CONNECTOR AS SHOWN IN FIG.1. WHEN MATED TO THE APPLICABLE RECEPTACLE, OTHERWISE, THE CONNECTORS ARE NOT COMPLETELY MATED, AND INSERT THIS PLUG TO THE RECEPTACLE TO THE END UNTIL THE MARKING IS LOCATED IN THE CENTER OF THE CONNECTOR.

