

10 9 8 7 6 5 4 3 2 1

F

E

D

C

B

A

F

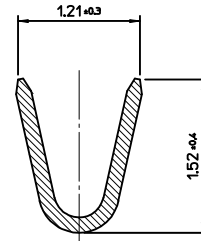
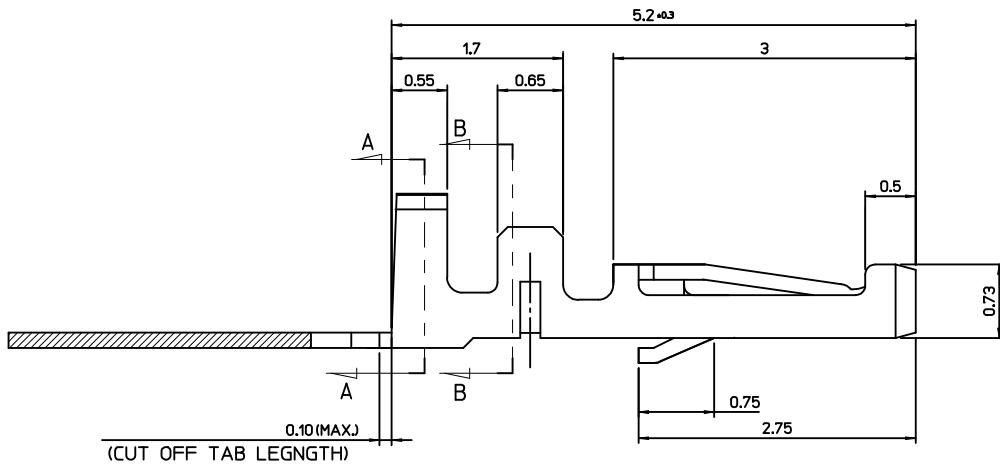
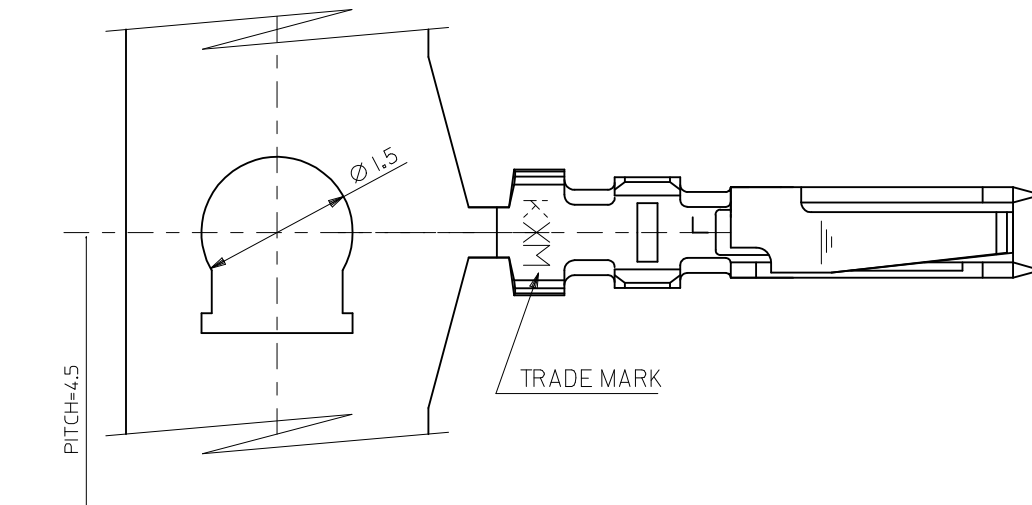
E

D

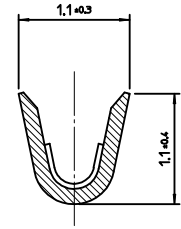
C

B

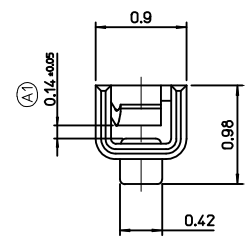
A



SECTION A-A



SECTION B-B



NOTES

1. APPLICABLE HOUSING : 104085-0400/104077-0600
104085-0410/104077-0610
104085-0300
2. MATERIAL : PHOSPHOR BRONZE, 0.15mm THICK'
3. FINISH : PRE-TIN PLATED
0.8~1.8 MICROMETER MINIMUM, TIN (Sn) OVER
0.3~0.8 MICROMETER COPPER
- ① 4. APPLICABLE WIRE RANGE: AWG#28
(INSULATION RANGE : 0.97 DIA.mm MAX.)

ORDER NUMBER 104505-8003

DESIGN UNITS: METRIC THIRD ANGLE PROJECTION

TITLE: 1.25MM W-T-B CONN. CRIMP REC' TERMINAL

MOLEX INCORPORATED

DOCUMENT NO. SD-104505-001 SHEET NO. 1 OF 1

THIS DRAWING CONTAINS INFORMATION THAT IS PROPRIETARY TO MOLEX INCORPORATED AND SHOULD NOT BE USED WITHOUT WRITTEN PERMISSION

REVISED EC NO: DRWN: JSSHIN CHKD: SHCHU APPR: A1	DESCRIPTION	QUALITY SYMBOLS	GENERAL TOLERANCES (UNLESS SPECIFIED)	DIMENSION STYLE	SCALE	DESIGN UNITS	THIRD ANGLE PROJECTION	
		$\nabla=0$ $\text{C}=0$	mm INCH	MM ONLY	20:1	METRIC		
		4 PLACES	\pm --- \pm ---	DRAWN BY	DATE	TITLE		
		3 PLACES	\pm --- \pm ---	CHECKED BY	DATE	1.25MM W-T-B CONN. CRIMP REC' TERMINAL		
		2 PLACES	± 0.20 \pm ---	APPROVED BY	DATE	MOLEX INCORPORATED		
1 PLACE	± 0.25 \pm ---	ANGULAR $\pm 1^\circ$	MATERIAL NO.	1045058003	SD-104505-001			
DRAFT WHERE APPLICABLE MUST REMAIN WITHIN DIMENSIONS		SIZE	THIS DRAWING CONTAINS INFORMATION THAT IS PROPRIETARY TO MOLEX INCORPORATED AND SHOULD NOT BE USED WITHOUT WRITTEN PERMISSION					
A1		REV	A3					

9 8 7 6 5 4 3 2 1