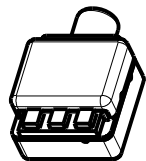
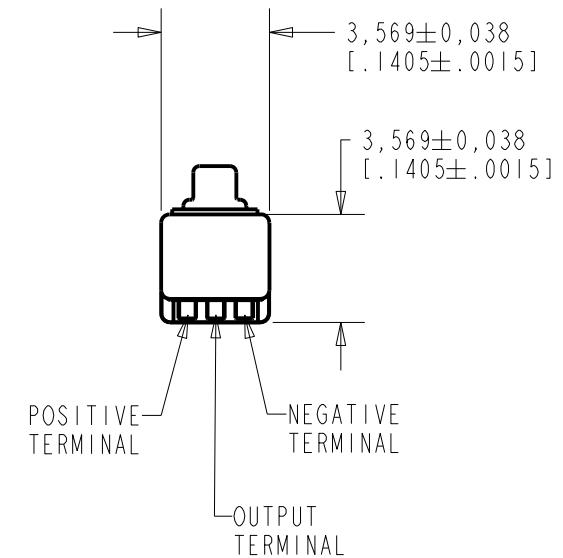
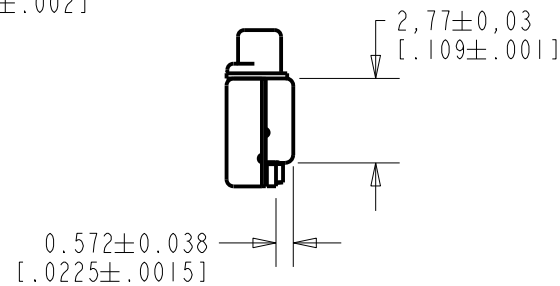
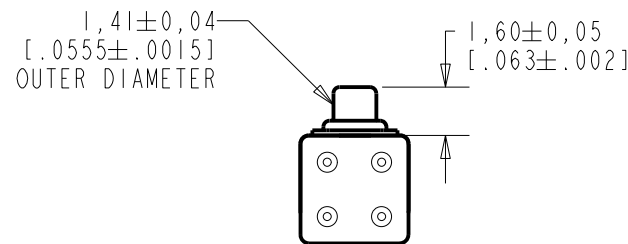
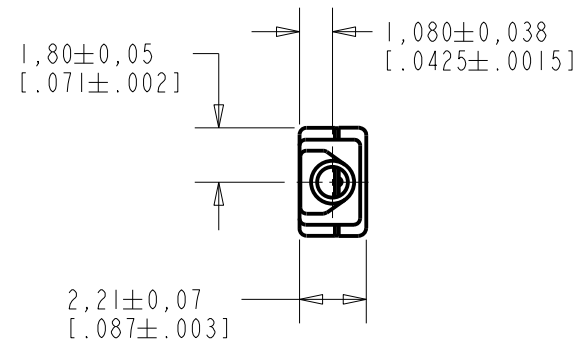


EM-24347-C36

SHT 1.1

NOTE:

1. INCREASED PRESSURE AT SOUND INLET CAUSES A POSITIVE GOING VOLTAGE TO APPEAR AT THE OUTPUT TERMINAL, RELATIVE TO THE NEGATIVE TERMINAL.



NOMINAL WEIGHT
.08 GRAM

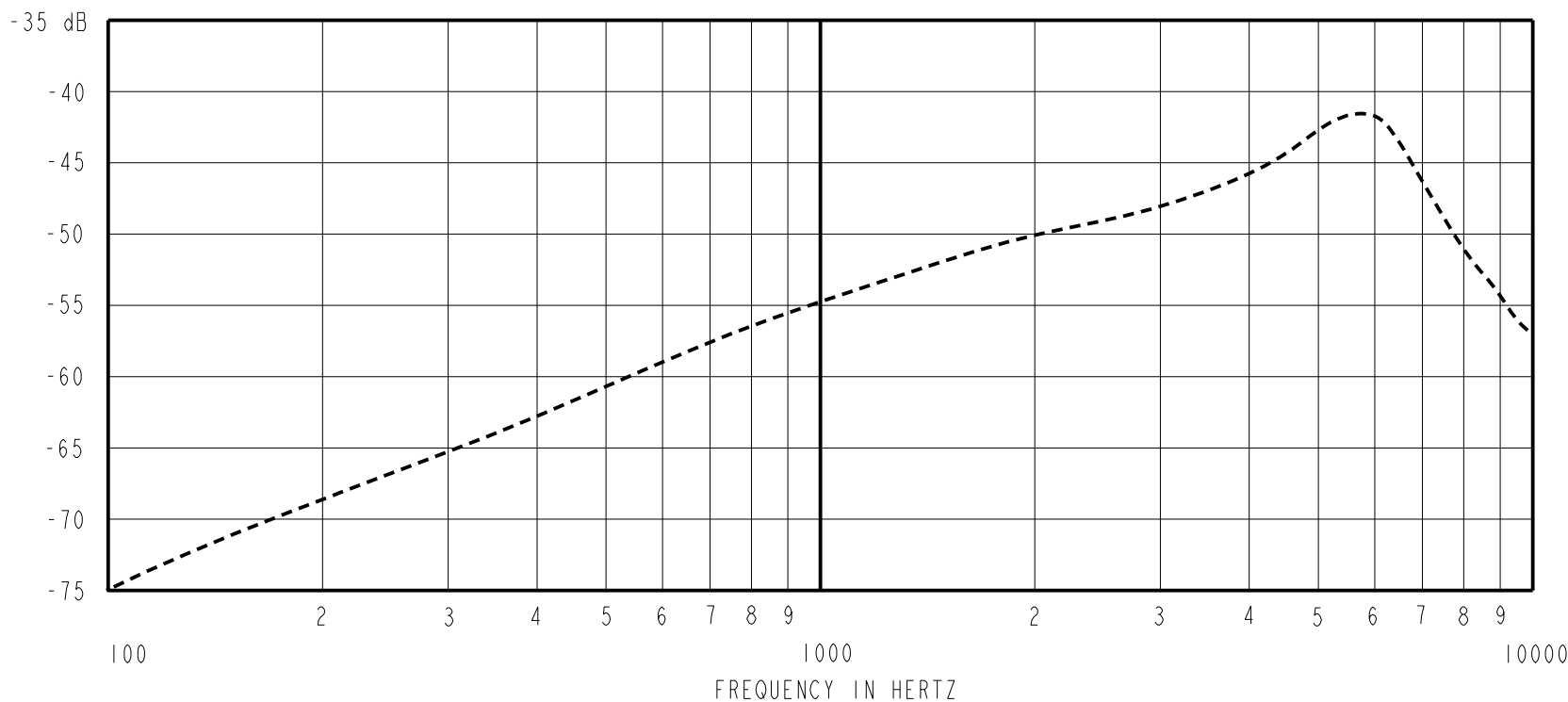
DIMENSIONS IN MILLIMETERS [INCHES]

KNOWLES ELECTRONICS
ITASCA, ILLINOIS U.S.A.

| Revision | C.O. # | Implementation Date | RELEASE LEVEL | REVISION |
|----------|-----------|---------------------|---------------|----------|
| I | MI0105773 | 10-20-14 | Active | I |
| H | MI0105440 | 3-10-14 | | |
| G | MI0104054 | 4-20-11 | | |

| | | | |
|--------------------------|--|---------|----------|
| SCALE: 4:1 | | DR. BY | DATE |
| DO NOT SCALE DRAWING | | MMM | 12-29-05 |
| TITLE: MICROPHONE | | CK. BY | DATE |
| EM-24347-C36 | | GJP | 1-2-06 |
| OUTLINE DRAWING | | APP. BY | DATE |
| SHT 1.1 | | GJP | 1-2-06 |

SENSITIVITY IN dB RELATIVE TO 1.0 VOLT/0.1 Pa (N/M²)
FOR CONDITIONS SHOWN BELOW.



| FREQUENCY | SENSITIVITY | | | DEVICE CONFORMITY | |
|-----------|-------------|-------|-------|------------------------------|-------|
| | MIN. | NOM. | MAX. | RANGE OF DEVIATION FROM 1KHz | |
| 300 | --- | -64.5 | --- | -11.5 | -8.5 |
| 1000 | -58.5 | -54.5 | -50.5 | 0.0 | 0.0 |
| ≈5800 | --- | -41.5 | --- | +8.0 | +18.0 |

- NOTES:
1. CASE CONNECTED TO NEGATIVE TERMINAL.
 2. MICROPHONE TO BE FUNCTIONAL WITH 1.6 VDC SUPPLY.
 3. TYPICAL SENSITIVITY TO HUMIDITY AT 1000Hz IS 0.06 dB/%RH
 4. SENSITIVITY AND NOISE VALUES INDICATED ON THIS SPECIFICATION ARE VALID AT 50% HUMIDITY.
 5. TYPICAL POWER FEEDTHROUGH ATTENUATION: 68.5 dB SPL (1 kHz EQUIVALENT SPL PRODUCED BY 10 mV RMS VARIATION OF BATTERY VOLTAGE).

| PORT LOCATION | DC SUPPLY | AMPLIFIER CURRENT DRAIN | SENSITIVITY CHANGE ON REDUCING SUPPLY TO 0.9VDC | "A" WEIGHTED NOISE (RE 1.0 VOLT) | OUTPUT IMPEDANCE OHMS | | |
|---------------|-----------|-------------------------|---|----------------------------------|-----------------------|------|------|
| | | | | | MIN. | NOM. | MAX. |
| 12S | 1.3V | 50 uA MAX. | 3 dB MAX. | -98.5 dB MAX. | 2800 | 4400 | 6800 |

| Revision | C.O. # | Implementation Date | RELEASE LEVEL | REVISION |
|----------|-----------|---------------------|---------------|----------|
| I | M10105773 | 10-20-14 | Active | I |
| H | M10105440 | 3-10-14 | | |
| G | M10104054 | 4-20-11 | | |

KNOWLES ELECTRONICS
ITASCA, ILLINOIS U.S.A.

WHEN TEST LIMITS ARE USED TO ESTABLISH INCOMING INSPECTION ACCEPTANCE/REJECTION CRITERIA, CORRELATION OF TEST EQUIPMENT WITH KNOWLES IS ALSO REQUIRED FOR ELIMINATION OF EQUIPMENT AND TEST METHOD VARIATION

TITLE: **MICROPHONE**
PERFORMANCE SPECIFICATION

EM-24347-C36
SHT 2.1

| DR. BY | DATE |
|---------|----------|
| MMM | 12-29-05 |
| CK. BY | DATE |
| GJP | 1-2-06 |
| APP. BY | DATE |
| GJP | 1-2-06 |