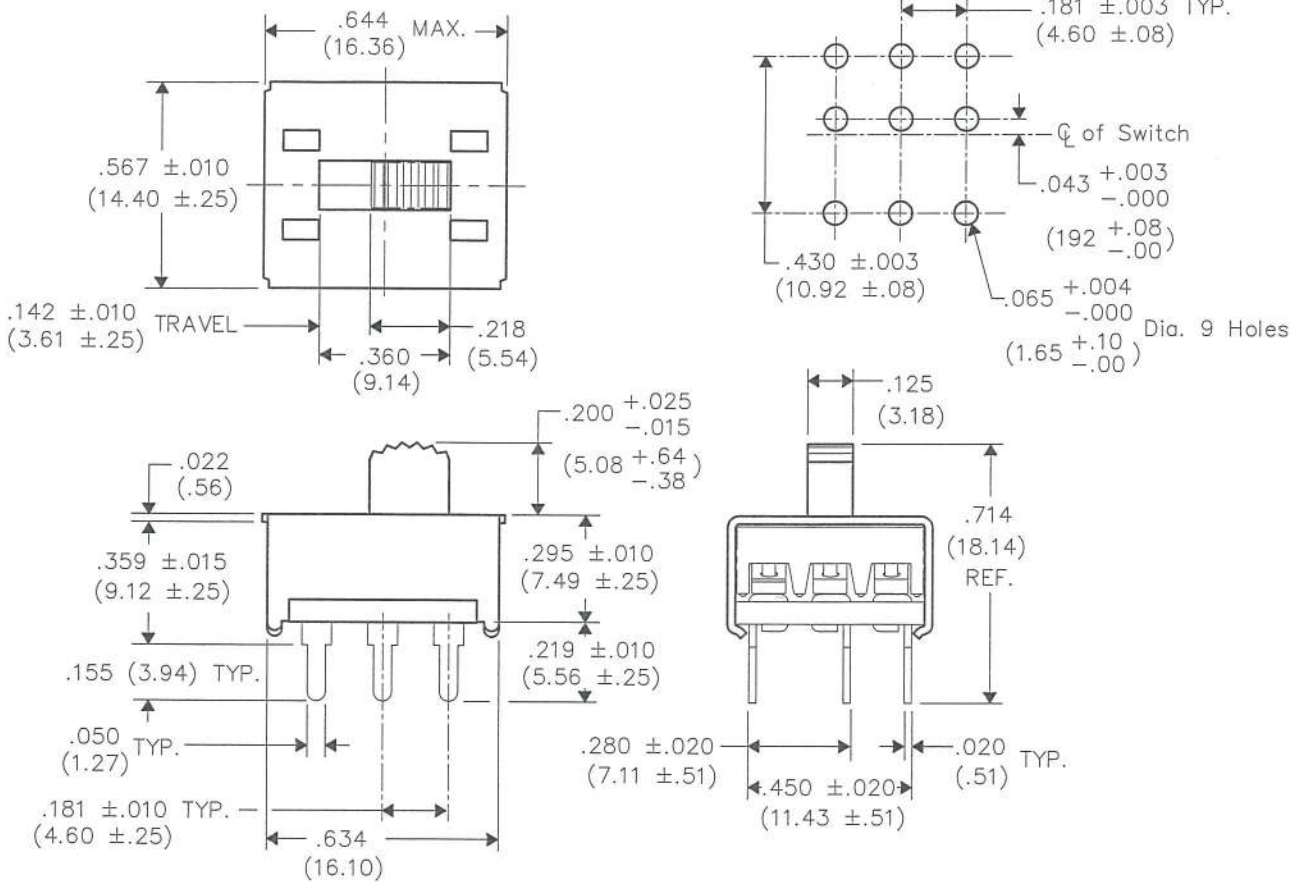


THIS INFORMATION IS CONFIDENTIAL AND PROPRIETARY TO CW INDUSTRIES INCORPORATED AND ITS AFFILIATES. IT MAY NOT BE DISCLOSED TO ANYONE OTHER THAN CW INDUSTRIES PERSONNEL, WITHOUT WRITTEN AUTHORIZATION FROM CW INDUSTRIES INCORPORATED, SOUTHAMPTON, PENNSYLVANIA, USA.

DIMENSIONS IN INCHES (MILLIMETERS)
 DO NOT SCALE DRAWING
 Dwg. No. GF-161-0005

P. C. LAYOUT



1 2 3 4 5 6 7 8 9 10

B-FORMAT 2002
REVISIONS
 RELEASED: DGW 7-12-13
 JUL 19 2013

PDF FILE MADE	CW INDUSTRIES Southampton, Pa. 18966		Title: MINI SWITCH 3P - D.T. NO MOUNTING EARS	
	TOLERANCES UNLESS OTHERWISE SPECIFIED 2 Place Decimal $\pm .010$ 3 Place Decimal $\pm .005$ Angles $\pm 1^\circ$		METRIC 1 Place Dec. $\pm .25$ mm 2 Place Dec. $\pm .13$ mm	
	Made for: CW IND.		Division: SWITCH	
	Drawn by: DGW 7-12-13 Checked by: <i>G. Guld 7-22-13</i> Approval: <i>G. Guld 7-22-13</i>		Dwg. No. GF-161-0005	

MASTER