

REVISIONS				
P	LTR	DESCRIPTION	DATE	APVD
A		FIRST RELEASE	03JUL2019	SZ SZ
A1		ECO-20-010950	05AUG2020	SZ SZ
A3		ECO-21-002794	01MAR2021	RY SH

NOTES, UNLESS OTHERWISE SPECIFIED

1. MATERIAL:
 HOUSING - THERMOPLASTIC, GLASS PREINFORCED, COLOR, BLACK, UL 94V-0
 CONTACTS - COPPER ALLOY.

2. FINISH:
 MATING AREA - 30u" GOLD OVERALL NICKEL.
 SOLDER TAIL - MATTE TIN OVERALL NICKEL.

3. MARK P/N AND DATA CODE IN APPROX. AREA AS SHOWN.
 4. NO TOOLING

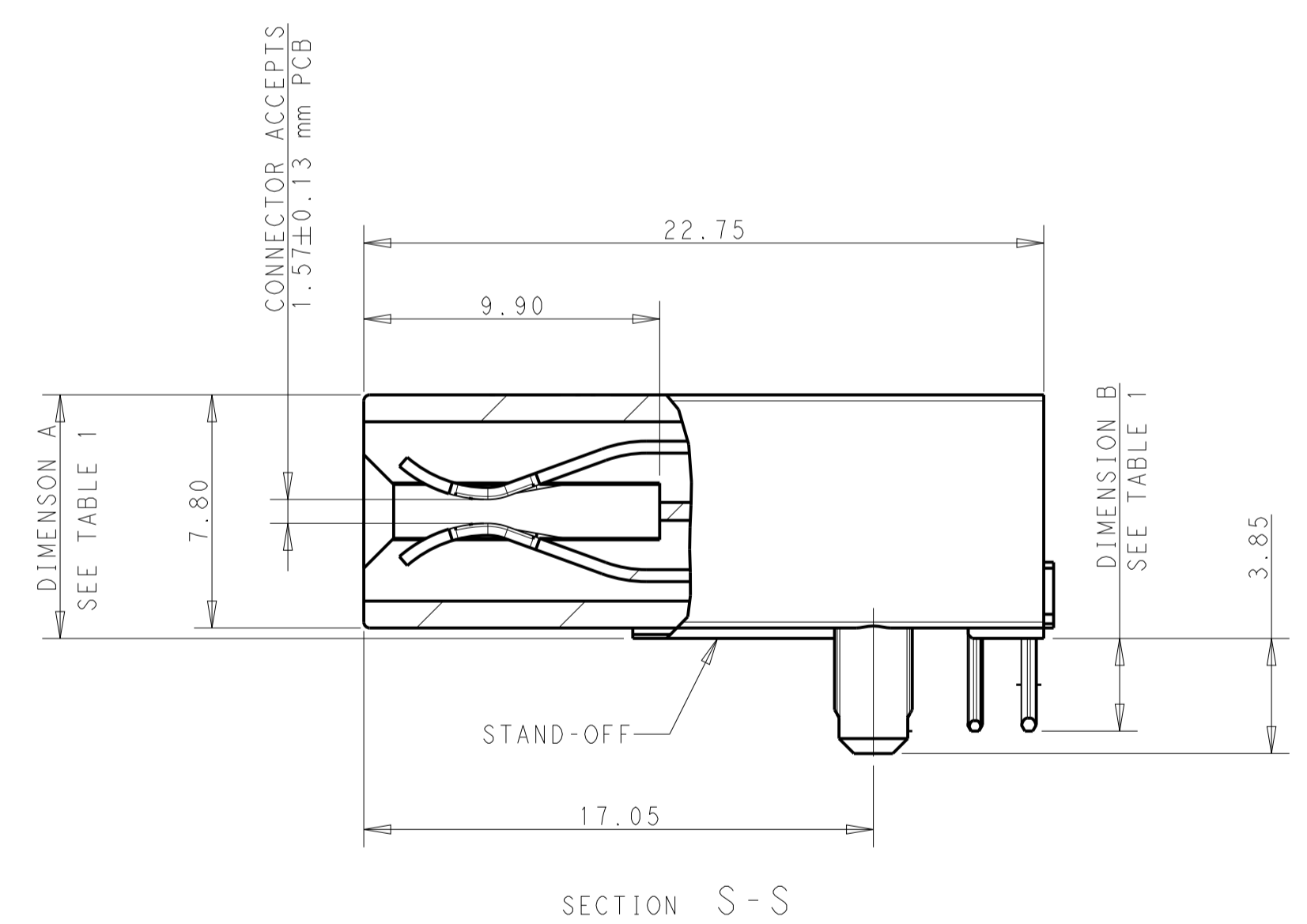
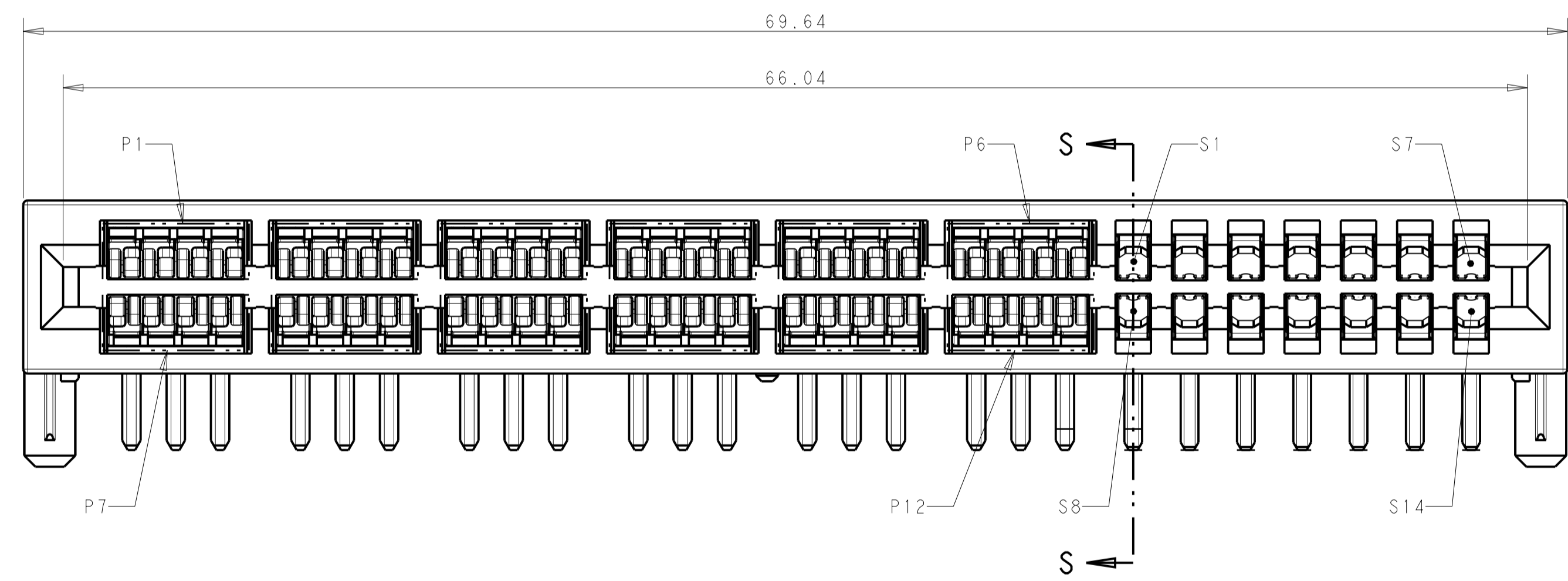
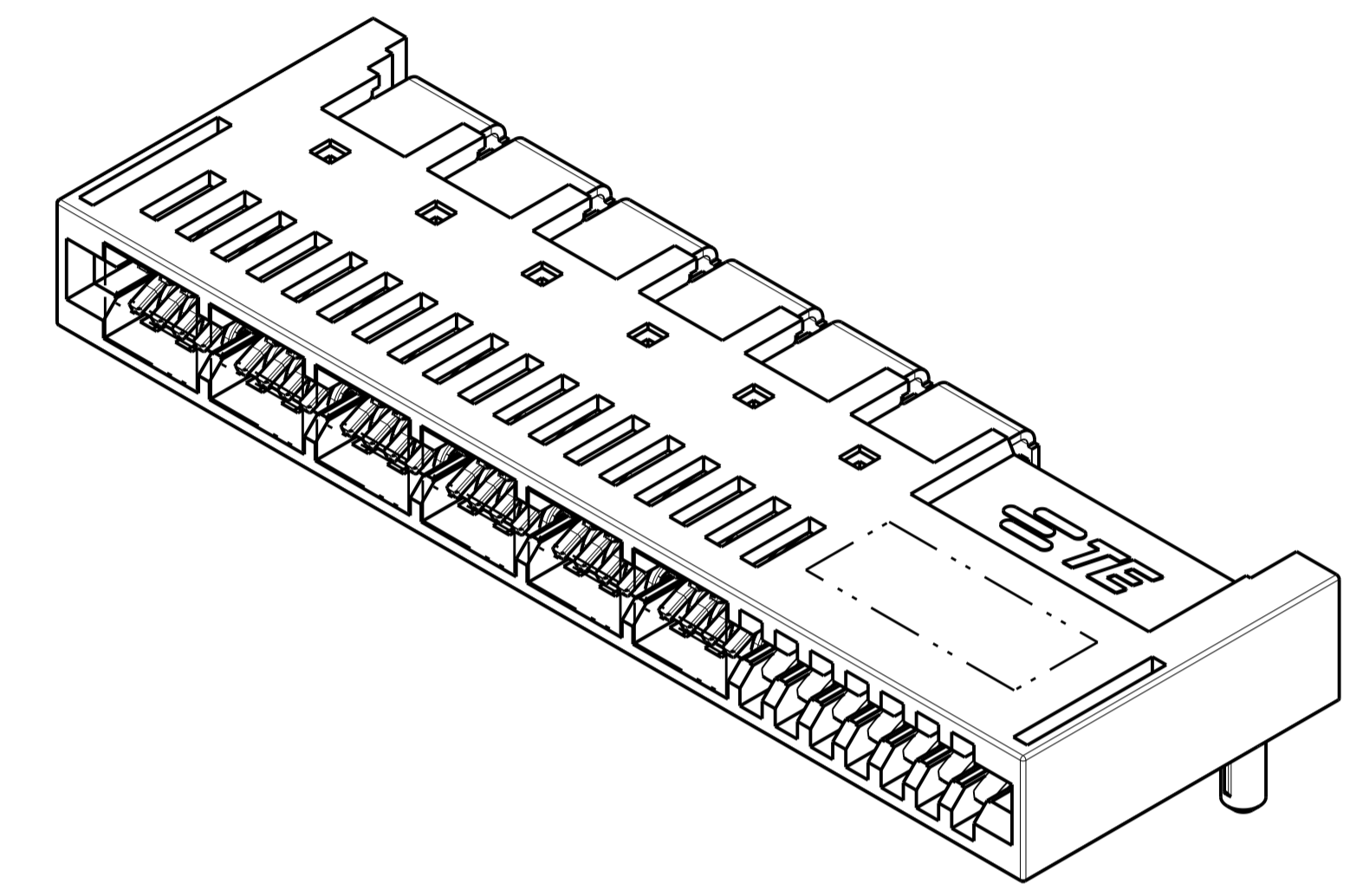
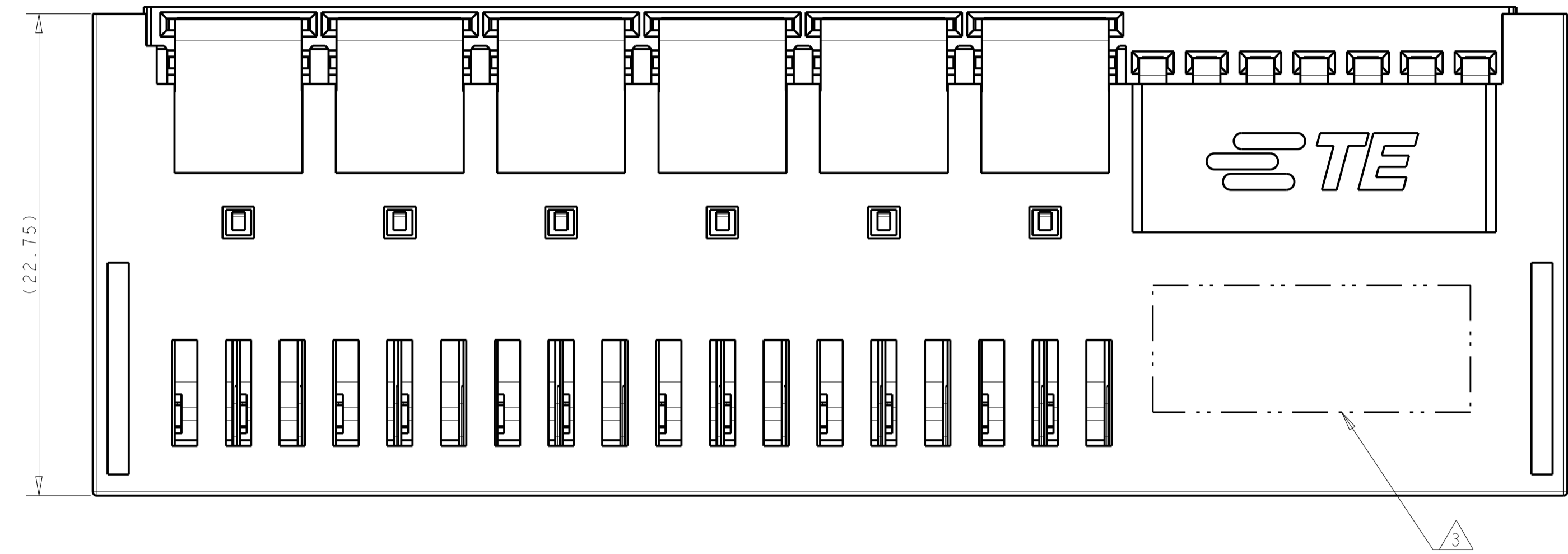
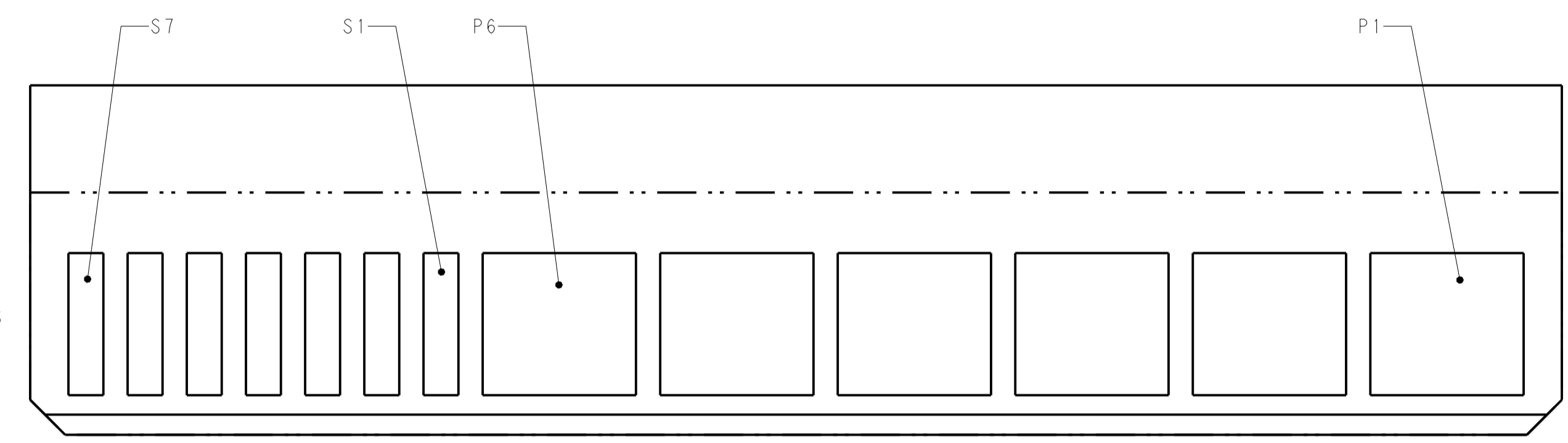
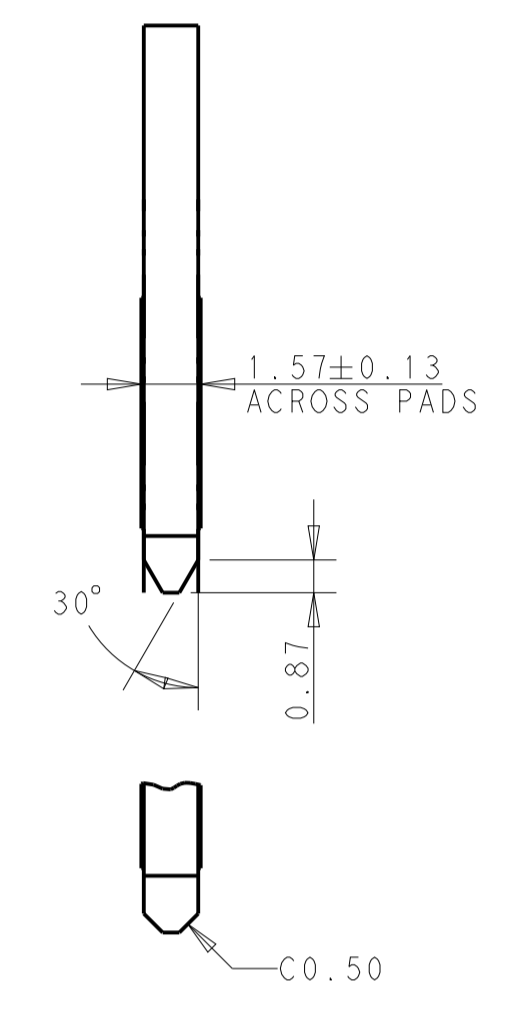
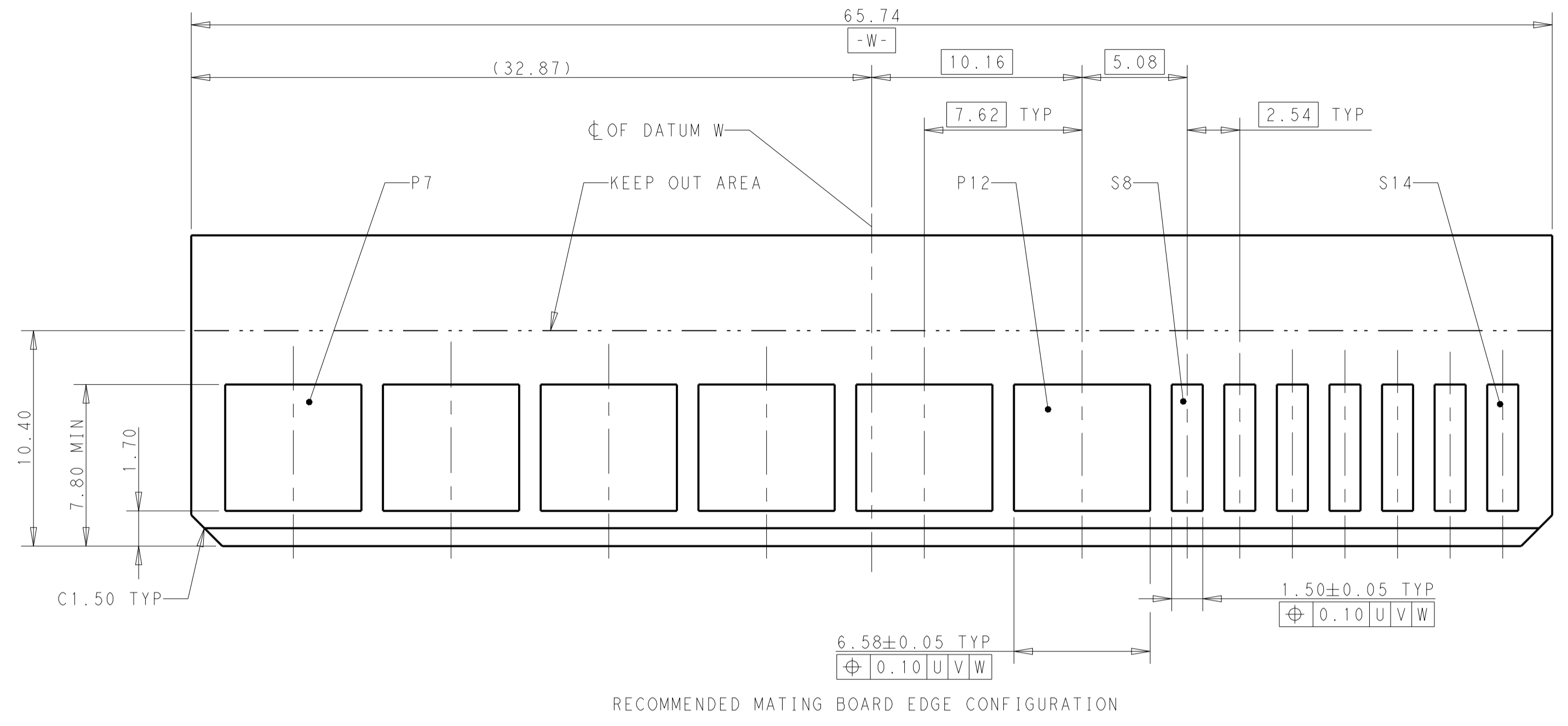


TABLE 1

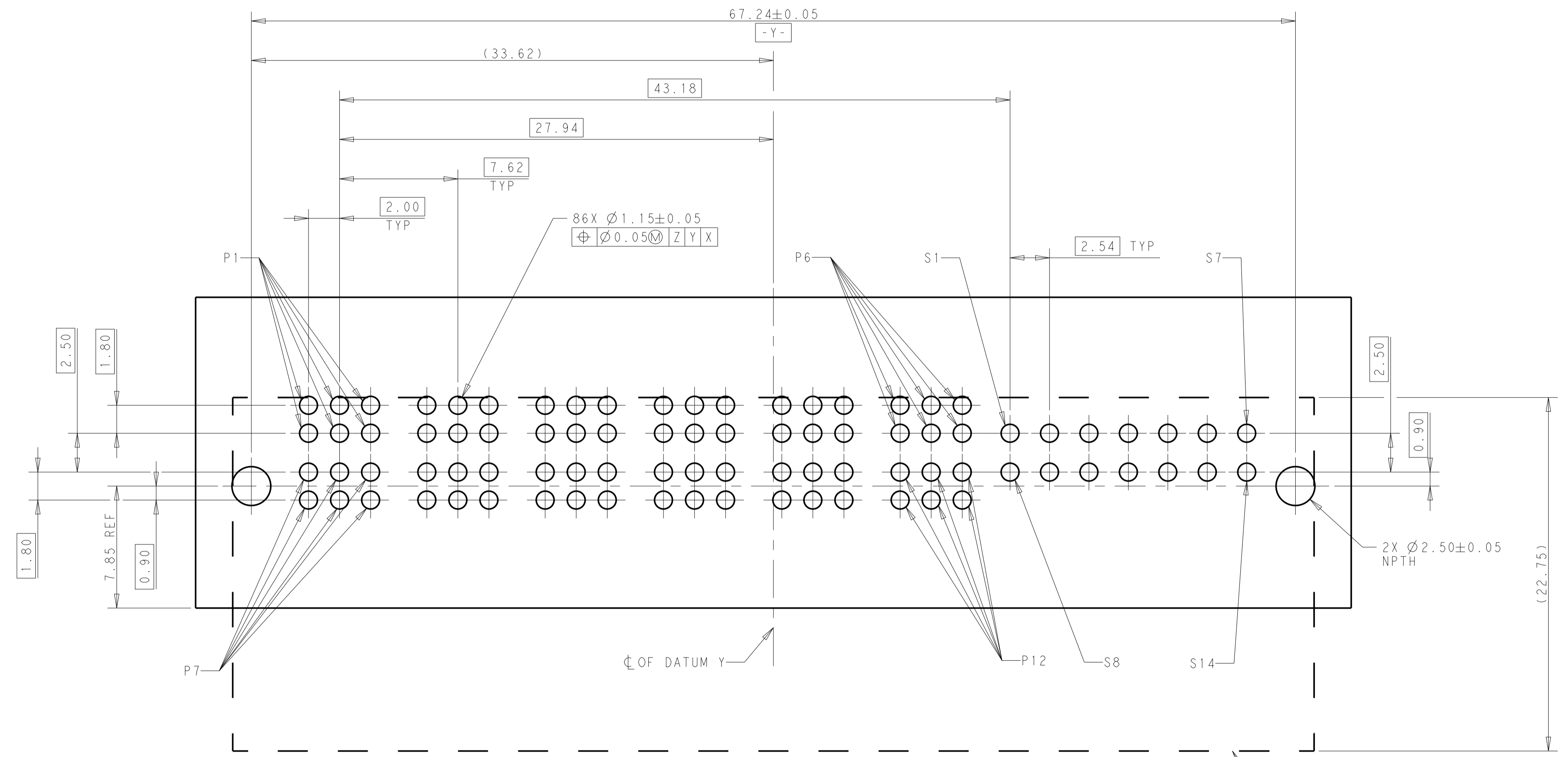
2.90 ^{+0.35} _{-0.15}	8.35±0.25	2343428-2
3.10 ^{+0.35} _{-0.15}	8.15±0.25	2343428-1
DIMENSION B	DIMENSION A	PART NUMBER

THIS DRAWING IS A CONTROLLED DOCUMENT.		OWN: RICHARD YU	DATE: 01MAR2021	TE Connectivity	
DIMENSIONS: mm		CHK: SEAN HAN	DATE: 01MAR2021	NAME: HDCE PLUS, RIGHT ANGLE 2X6 POWER, 2X7 SIGNAL	
TOLERANCES UNLESS OTHERWISE SPECIFIED:		APVD: SEAN HAN	DATE: 01MAR2021	SIZE: A1	
0 PLC ±0.50	1 PLC ±0.25	PRODUCT SPEC	APPLICATION SPEC	CAGE CODE: 2343428	RESTRICTED TO: -
2 PLC ±0.25	3 PLC ±0.25	WEIGHT	CUSTOMER DRAWING	SCALE: 5:1	SHEET 1 OF 2
4 PLC ±0.25	ANGLES ±0.25	FINISH	SCALE: 5:1	SHEET 1 OF 2	REV: A3

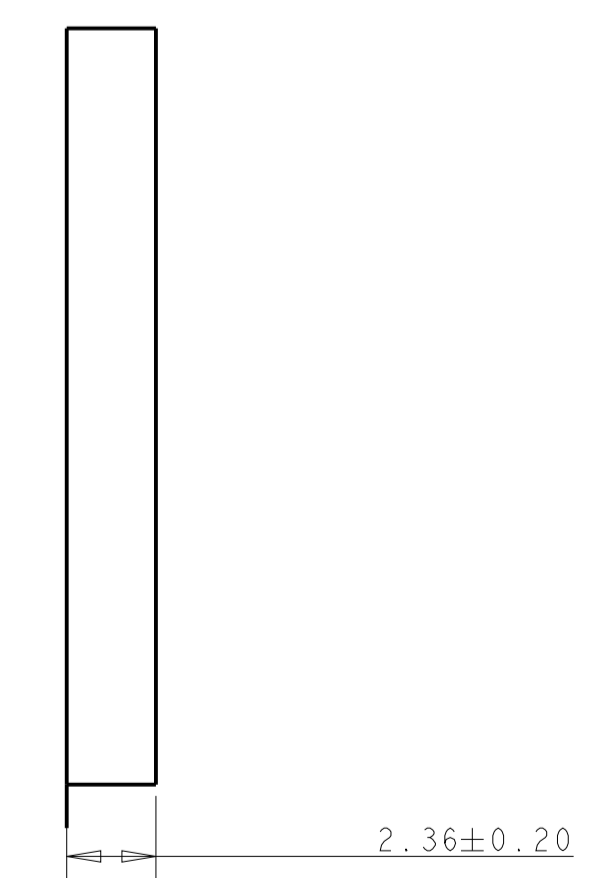
REVISIONS				
REV	DATE	DESCRIPTION	BY	CHK
-	-	SEE SHEET 1	-	-



A1 ALTERNATIVE CHAMFER FOR MATING BOARD EDGE



RECOMMENDED MOUNTING BOARD CONFIGURATION LAYOUT VIEW FROM COMPONENT SIDE



- NOTES FOR MOUNTING BOARD, UNLESS OTHERWISE SPECIFIED:
1. PLATED THROUGH HOLE, FINISHED HOLE SIZE: 1.15mm. DRILL HOLE SIZE: 1.25±0.025mm.
 2. COPPER PLATING THICKNESS: 0.025~0.05mm.
 3. SURFACE FINISH: OSP OR IMMERSION TIN PLATING IS RECOMMENDED.

THIS DRAWING IS A CONTROLLED DOCUMENT.		OWN: RICHARD YU	DATE: 01MAR2021	TE Connectivity
DIMENSIONS: mm		CHK: SEAN HAN	DATE: 01MAR2021	
TOLERANCES UNLESS OTHERWISE SPECIFIED:		APVD: SEAN HAN	DATE: 01MAR2021	NAME: HDCE PLUS, RIGHT ANGLE PRODUCT SPEC: 2X6 POWER, 2X7 SIGNAL APPLICATION SPEC:
0 PLC ± 1 PLC ±0.20 2 PLC ±0.10 3 PLC ± 4 PLC ± ANGLES ±		PRODUCT SPEC	APPLICATION SPEC	
MATERIAL	FINISH	WEIGHT	SIZE: A1	CAGE CODE: 2343428 DRAWING NO: 2343428 CUSTOMER DRAWING
			SCALE: 5:1	