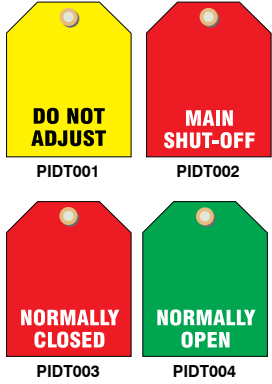


**Valve Identifier Plastic Tags**

Mark and identify the status of the valve and prevent accidental adjustment.

- 0.015" Rigid Vinyl
- 2 1/2"H x 2"W with 3/8" metal grommet
- Sold in Packs of 5



**Soft Aluminum Tags**

Imprint to leave a lasting impression even if ink wears off.

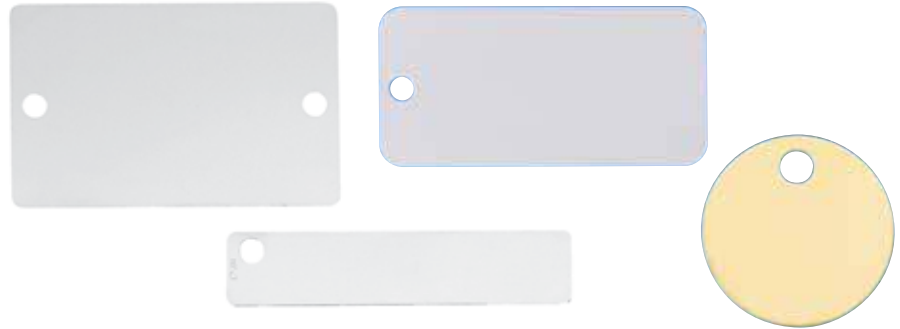
- 24-gauge (0.020") thick, double-sided soft aluminum laminate over tag board
- 3/16" plain or eyelet hole
- Writing permanently debosses



Plain Hole Part No.	Eyelet Hole Part No.	Size	Std. Pkg. Qty.
PIDT005	PIDT009	3/4" x 3"	Pkg. of 25
PIDT006	PIDT010	1 3/8" x 3 1/8"	Pkg. of 25
PIDT007	PIDT011	2" x 4"	Pkg. of 25
PIDT008	PIDT012	3" x 5"	Pkg. of 25

**Stainless Steel and Brass Marker Plates and Tags**

- Provides permanent identification of pipes, conduit, valves, cables and equipment in harsh environments
- Designed for use with Panduit's Pan-Steel® Stainless Steel Cable Ties for fast installation at lowest installed cost
- All marker plates/tags can be embossed or laser etched with Panduit Factory Custom Marking Service
- Designated plates feature easy feed design with a raised slot to simplify cable tie installation and improve productivity
- Temperature ranges:  
Stainless Steel Marker Plates, Tags, & Cable Ties: -112° to 1000°F  
Brass Tags: -112° to 302°F



Part No.	Material	Color	Custom Marking Parameters		Size	Thickness	Used with Pan-Steel® Cable Ties	Std. Pkg. Qty.
			Max. 3/16" (4.77mm) Character Per Line	Max. Lines of Text				
MMP350W17-Q	304 Stainless Steel	Natural	23	6	1.73"W x 3.5"L	0.015"	MLT-S	25
MT350-C	304 Stainless Steel	Natural	26	3	0.75"W x 3.5"L	0.010"	MLT-S	100
MT350W17-Q	304 Stainless Steel	Natural	26	6	1.70"W x 3.5"L	0.015"	MLT-S	25
MT150D-Q	304 Stainless Steel	Natural	5, 6, 5	3	1.5" dia.	0.035"	MLT-S	25
MTB150D-Q	Brass	Brass	5, 6, 5	3	1.5" dia.	0.040"	MLT-S	25

**Metal Indenting Machine**

- Provides quick, easy, and permanent identification with Panduit's Pan-Alum™ Marker Plates and Cable Ties and Pan-Steel® Stainless Steel Marker Plates, Tags, Cable Ties and Straps
- Automatic table indexing advances material forward for convenience and improved productivity
- New, improved design features aluminum base and durable construction
- 3/16" character wheel

No. MIM187



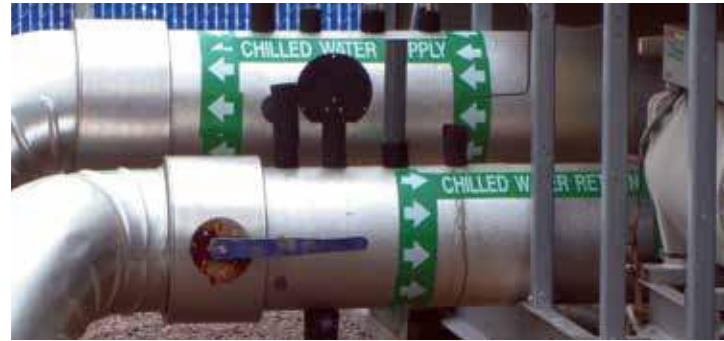
## Pipe Markers

Marking and identification of contents in pipes and piping systems is important to safety and maintenance. Pipe markers are to visibly identify contents, flow directions and hazard classification, thus promoting a safe working environment.



Designed to meet or exceed ASME (ANSI) A13.1-2007 recommendations for size, color and visibility.

CONTENTS OF THE PIPE	COLOR
Fire quenching fluids	WHITE ON RED
Toxic and corrosive fluids	BLACK ON ORANGE
Flammable fluids	BLACK ON YELLOW
Combustible fluids	WHITE ON BROWN
Potable, cooling, boiler feed, and other water	WHITE ON GREEN
Compressed Air	WHITE ON BLUE



### Installation recommendations:

- Above or below center visual line of pipe
- Frequent intervals on straight pipe runs
- Close to valves
- Near branches and T's
- Any change in direction
- Before and after pipe going through walls



### Self Stick Vinyl (PPMA)

- 0.004" flexible vinyl marker has UV-resistant polyester overlamine with high-tack, acrylic adhesive back
- Included arrow provides proper directional flow marking
- Durable, protective gloss surface withstands fading, abrasions, splashes, grease, dust, and dirt
- Service temperature is -20° to 176° F



### Snap On Pipe Markers (PPMS)

- Precoiled, heavy gauge 0.020" rigid vinyl plastic is lightweight, yet durable to withstand tough industrial environments
- Fits over pipes with dirty, greasy, or rough surfaces or other less than perfect surfaces
- Easy to remove and reapply
- Service temperature range is -4° to 158° F (not recommended for hot pipes)

Part No.	Legend
1001	ACETONE
1003	ACETYLENE GAS
1005	ACETYLENE GAS
1007	ACID
1009	ACID
1011	ACID VENT
1013	ACID VENT
1015	ACID WASTE
1017	ACID WASTE
1019	AIR
1021	AIR
1023	AIR
1025	AIR RETURN
1027	AIR SUPPLY
1029	ALCOHOL
1031	ALUM
1033	ALUM
1035	AMMONIA
1037	AMMONIA
1039	ARGON
1041	ARGON
1043	ARGON
1045	ASBESTOS FREE
1047	ASBESTOS FREE INSULATION
1049	ASBESTOS INSULATION

Part No.	Legend
1051	BACKWASH
1053	BLOWER AIR
1057	BOILER BLOW DOWN
1059	BOILER BLOW DOWN
1061	BOILER DRAIN
1063	BOILER DRAIN
1065	BOILER FEED
1067	BOILER FEED
1069	BOILER FEED WATER
1071	BOILER FEED WATER
1073	BREATHING AIR
1075	BRINE
1077	BRINE
1079	CARBON DIOXIDE
1081	CARBON DIOXIDE
1083	CAUSTIC
1085	CAUSTIC
1087	CAUSTIC SODA
1089	CAUSTIC SODA
1091	CHEMICAL
1093	CHEMICAL
1095	CHEMICAL FEED
1097	CHEMICAL FEED
1099	CHILLED WATER
1101	CHILLED WATER RETURN

Part No.	Legend
1103	CHILLED WATER SUPPLY
1105	CHLORINE
1107	CHLORINE
1109	CIRCULATING WATER
1111	CITY GAS
1113	CITY GAS
1115	CITY WATER
1117	COLD WATER
1119	COLD WATER DRAIN
1121	COLD WATER RETURN
1123	COLD WATER SUPPLY
1125	COMPRESSED AIR
1127	COMPRESSED AIR
1129	CONDENSATE
1131	CONDENSATE
1133	CONDENSATE DRAIN
1135	CONDENSATE PUMP DISCHARGE
1137	CONDENSATE RETURN
1139	CONDENSATE SUPPLY
1141	CONDENSER WATER
1143	CONDENSER WATER RETURN
1145	CONDENSER WATER SUPPLY
1147	COOLING WATER
1149	COOLING WATER RETURN
1151	COOLING WATER SUPPLY

Part No.	Legend
1153	DEIONIZED WATER
1157	DEIONIZED WATER SUPPLY
1159	DIESEL OIL
1161	DIESEL WASTE OIL
1163	DIESEL WASTE OIL
1165	DISCHARGE
1167	DISTILLED WATER
1169	DOMESTIC
1171	DOMESTIC COLD WATER
1173	DOMESTIC COLD WATER RETURN
1175	DOMESTIC COLD WATER SUPPLY
1177	DOMESTIC HOT WATER
1179	DOMESTIC HOT WATER
1181	DOMESTIC HOT WATER RECIRCULATION
1183	DOMESTIC HOT WATER RECIRCULATION
1185	DOMESTIC HOT WATER RETURN
1187	DOMESTIC HOT WATER RETURN
1189	DOMESTIC HOT WATER SUPPLY
1191	DOMESTIC HOT WATER SUPPLY
1193	DRAIN
1195	DRAIN
1197	DRAIN WATER
1199	DRINKING WATER
1201	EFFLUENT
1203	ELECTRIC TRACED

Part No.	Legend
1205	ELECTRIC TRACED
1207	EXHAUST
1209	EXHAUST AIR
1211	FEED
1213	FEED
1215	FILTERED WATER
1217	FILTRATE
1219	FIRE AUTO SPRINKLER
1221	FIRE MAIN
1223	FIRE PROTECTION WATER
1225	FIRE SPRINKLER WATER
1227	FREON
1229	FREON
1231	FRESH WATER
1233	FUEL GAS
1235	FUEL GAS
1237	FUEL OIL
1239	FUEL OIL RETURN
1241	FUEL OIL SUPPLY
1243	FUEL OIL VENT
1245	GAS
1247	GAS
1249	GAS
1251	GASOLINE
1253	GASOLINE
1257	GLYCOL
1259	GLYCOL
1261	GLYCOL
1263	GLYCOL RETURN
1265	GLYCOL RETURN
1267	GLYCOL RETURN
1269	GLYCOL SUPPLY
1271	GLYCOL SUPPLY
1273	GLYCOL SUPPLY
1275	HALON
1277	HEATING
1279	HEATING HOT WATER RETURN
1281	HEATING HOT WATER RETURN
1283	HEATING HOT WATER SUPPLY

Part No.	Legend
1285	HEATING HOT WATER SUPPLY
1287	HEATING RETURN
1289	HEATING SUPPLY
1291	HEATING WATER RETURN
1293	HEATING WATER SUPPLY
1295	HEATING WATER SUPPLY
1297	HIGH PRESSURE AIR
1299	HIGH PRESSURE AIR
1301	HIGH PRESSURE CONDENSATE
1303	HIGH PRESSURE GAS
1305	HIGH PRESSURE GAS
1307	HIGH PRESSURE HOT WATER
1309	HIGH PRESSURE HOT WATER
1311	HIGH PRESSURE NITROGEN
1313	HIGH PRESSURE STEAM
1315	HIGH PRESSURE WATER
1317	HIGH PRESSURE WATER
1319	HIGH PRESSURE NATURAL GAS
1321	HOT
1323	HOT WATER
1325	HOT WATER
1327	HOT WATER RETURN
1329	HOT WATER RETURN
1331	HOT WATER SUPPLY
1333	HOT WATER SUPPLY
1335	HYDRAULIC FLUID
1337	HYDRAULIC FLUID
1339	HYDRAULIC LINE
1341	HYDRAULIC LINE
1343	HYDRAULIC OIL
1345	HYDRAULIC OIL
1347	HYDRAULIC SUPPLY
1349	HYDROCHLORIC ACID
1351	HYDROCHLORIC ACID
1353	HYDROGEN
1357	HYDROGEN
1359	HYDROGEN PEROXIDE
1361	HYDROGEN PEROXIDE
1363	INDUSTRIAL WATER

Part No.	Legend
1365	INERT GAS
1367	INERT GAS
1369	INSTRUMENT AIR
1371	INSTRUMENT AIR
1373	KEROSENE
1375	LAB VACUUM
1377	LAB VENT
1379	LAB WASTE
1381	LIQUID NITROGEN
1383	LOW PRESSURE AIR
1385	LOW PRESSURE CONDENSATE
1387	LOW PRESSURE GAS
1389	LOW PRESSURE GAS
1391	LOW PRESSURE NATURAL GAS
1393	LOW PRESSURE NATURAL GAS
1395	LOW PRESSURE NITROGEN
1397	LOW PRESSURE NITROGEN
1399	LOW PRESSURE STEAM
1401	LOW PRESSURE WATER
1403	LUBE OIL
1405	MAKE-UP WATER
1407	MEDICAL AIR
1409	MEDICAL VACUUM
1411	MEDIUM PRESSURE CONDENSATE
1413	MEDIUM PRESSURE STEAM
1415	MED-PRESSURE STEAM
1417	MILL AIR
1419	MILL WATER
1421	MIXED GAS
1423	NATURAL GAS
1425	NATURAL GAS
1427	NITRIC ACID
1429	NITRIC ACID
1431	NITROGEN
1433	NITROGEN
1435	NITROUS OXIDE
1437	NITROUS OXIDE
1439	NITROUS OXIDE
1441	NON-POTABLE WATER

Part No.	Legend
1443	OIL
1445	OUTSIDE AIR
1447	OVERFLOW
1449	OXYGEN
1451	OXYGEN
1453	OXYGEN
1457	OXYGEN
1459	PEROXIDE
1461	PEROXIDE
1463	PLANT AIR
1465	PLANT WATER
1467	PLUMBING VENT
1469	POLYMER
1471	POLYMER SOLUTION
1473	POTABLE
1475	POTABLE WATER
1477	PROCESS WATER
1479	PROCESS WATER
1481	PROCESS WATER RETURN
1483	PROCESS WATER SUPPLY
1485	PROPANE GAS
1487	PROPANE GAS
1489	PULP
1491	PUMP
1493	PUMPED CONDENSATE
1495	RAINWATER
1497	RAW WATER
1499	REFRIGERANT LIQUID
1501	REFRIGERANT SUCTION
1503	REFRIGERATED LIQUID
1505	REFRIGERATED SUCTION
1507	REFRIGERATION
1509	RETURN
1511	RETURN
1513	RETURN
1515	RETURN
1517	ROOF DRAIN
1519	SALT WATER
1521	SANITARY DRAIN

**Self Stick (PPMA)**

Size Code	Pipe Diameter	Marker Size	UOM
A	3/4" to 1 1/4"	1" x 8"	Each
B	1 1/2" to 2"	1 1/2" x 8"	Each
D	2 1/2" to 6"	2 1/2" x 12"	Each
H	8" to 10"	4" x 24"	Each

**Snap On Pipe Markers (PPMS)**

Size Code	Pipe Diameter	Marker Size	UOM
A	3/4" to 1 1/4"	6" x 8"	Each
B	1 1/2" to 2"	9" x 8"	Each
C	2 1/4" to 3"	14" x 12"	Each
E	3 1/4" to 5"	19" x 12**	Each
F	5 1/4" to 6"	25" x 12**	Each

\*Have self-adhesive leading edge for secure fit

**How to Order Pipe Markers:**

- Select Material Code: Self Stick - PPMA
- Select Pipe Marker Base Part Number: 1001 **ACETONE**
- Select Size Code: 3/4" to 1 1/4" - A
- Combine Codes in Specific Order for Complete Part Number: PPMA1001A

Part No.	Legend
1523	SANITARY SEWER
1525	SANITARY VENT
1527	SANITARY WASTE
1529	SEAL WATER
1531	SERVICE AIR
1533	SERVICE WATER
1535	SEWAGE
1537	SEWER
1539	SLUDGE SOAP
1541	SOAP
1543	SODIUM HYDROXIDE
1545	SODIUM HYDROXIDE
1547	SODIUM HYPOCHLORITE
1549	SODIUM HYPOCHLORITE
1551	SOFT WATER
1553	SOLVENT
1557	SPENT ACID
1559	SPENT ACID

Part No.	Legend
1561	SPRINKLER
1563	SPRINKLER FIRE
1565	SPRINKLER WATER
1567	STEAM
1569	STEAM RETURN
1571	STEAM SUPPLY
1573	STORM DRAIN
1575	STORM SEWER
1577	STORM WATER
1579	SULFUR DIOXIDE
1581	SULFUR DIOXIDE
1583	SULFURIC ACID
1585	SULFURIC ACID
1587	SUMP PUMP DISCHARGE
1589	SUPPLY
1591	SUPPLY
1593	SUPPLY
1595	TANK DRAIN

Part No.	Legend
1597	TEMPERED WATER
1599	TEMPERED WATER
1601	TOLUENE
1603	TOLUENE
1605	TOWER WATER
1607	TOWER WATER RETURN
1609	TOWER WATER SUPPLY
1611	TREATED WATER
1613	UTILITY WATER
1615	UTILITY WATER
1617	VACUUM
1619	VACUUM
1621	VENT
1623	VENT
1625	WARM WATER
1627	WASTE
1629	WASTE WATER
1631	WASTE WATER

Part No.	Legend
1633	WATER
1635	WATER
1637	WELL WATER
1639	WHITE LIQUOR
1641	WHITE LIQUOR
1643	WHITE LIQUOR
1645	→
1647	→
1649	→
1651	→
1653	→
1657	→
1659	→
1661	→
1663	→
1665	→
1667	→
1669	→

**Self Stick (PPMA)**

Size Code	Pipe Diameter	Marker Size	UOM
A	3/4" to 1 1/4"	1" x 8"	Each
B	1 1/2" to 2"	1 1/2" x 8"	Each
D	2 1/2" to 6"	2 1/2" x 12"	Each
H	8" to 10"	4" x 24"	Each

**Snap On Pipe Markers (PPMS)**

Size Code	Pipe Diameter	Marker Size	UOM
A	3/4" to 1 1/4"	6" x 8"	Each
B	1 1/2" to 2"	9" x 8"	Each
C	2 1/4" to 3"	14" x 12"	Each
E	3 1/4" to 5"	19" x 12**	Each
F	5 1/4" to 6"	25" x 12**	Each

\*Have self-adhesive leading edge for secure fit

**How to Order Pipe Markers:**

- Select Material Code: Self Stick – PPMA
- Select Pipe Marker Base Part Number: 1523 **SANITARY SEWER**
- Select Size Code: 3/4" to 1 1/4" – A
- Combine Codes in Specific Order for Complete Part Number: PPMA1523A

**Color Banding Pipe Marking Tapes**

Variety of colors are ideal for coding pipes.

- 0.005" tapes with self-adhesive back, no liner
- Service temperature range -20° to 140°F
- Available in 1", 2" and 3" widths
- 108-ft. rolls



Available colors with color code:

Red – RED, Green – GRN, Blue – BLU, Gray – GRY, Brown – BRN, Black – BLK, Yellow – YEL, Orange – ORN, White – WHT, Purple – PUR

**To Order:** Add color code after part number.

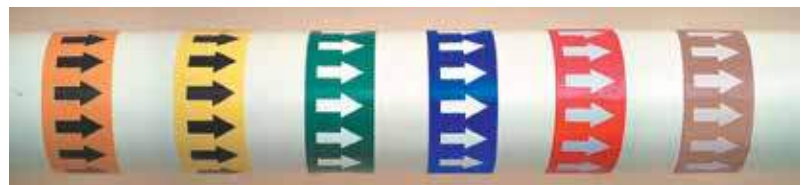
Example: Part No. PFM1X36 + Color Code YEL = PFM1X36YEL

Part No.	Size	UOM
PFM1X36	1" x 108-ft.	Roll
PFM2X36	2" x 108-ft.	Roll
PFM3X36	3" x 108-ft.	Roll

**Directional Flow Arrow Tapes**

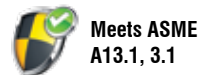
Provide 360° visibility for flow direction, with repeated arrows on the tape's length.

- 0.006" self-adhesive vinyl
- Available in 1", 2" and 4" widths
- 54-ft. and 108-ft. rolls



Available colors with color code:

Black/Yellow – BY, Green/White – GW, Blue/White – BLW, Red/White – RW, Black/Orange – BO, White/Brown – WBR



**To Order:** Add color code after part number.

Example: Part No. PPMR1X54 + Color Code BY = PPMR1X54BY

Part No.	Size	UOM	Part No.	Size	UOM
PPMR1X54	1" x 54-ft.	Roll	PPMR1X108	1" x 108-ft.	Roll
PPMR2X54	2" x 54-ft.	Roll	PPMR2X108	2" x 108-ft.	Roll
PPMR4X54	4" x 54-ft.	Roll	PPMR4X108	4" x 108-ft.	Roll

**Roll Tape Pipe Markers**

Easily mark pipes quickly at various locations along a piping system.

- 72 identical legends per roll, with perforations between each length
- Use in continuous lengths, or tear at perforations

- 0.006" vinyl with protective laminate surface
- Peel-off liner with self-adhesive back applies to smooth, clean, dry surface
- Service temperature is -20° to 140°F
- Available in 1" x 54-ft. or 2" x 54-ft. rolls



Roll Tape Pipe Marker & Directional Flow Arrow Tapes shown.

Part No.	Legend
PPMR0102	AIR
PPMR0101	AIR
PPMR0144	AMMONIA
PPMR0145	ARGON
PPMR0103	BOILER FEED
PPMR0146	CAUSTIC
PPMR0104	CHILLED WATER
PPMR0147	CHILLED WTR RTN
PPMR0148*	CHILLED WTR SPL
PPMR0149	CITY GAS
PPMR0150	CITY WATER
PPMR0151	COLD WATER
PPMR0105*	COLD WATER RTN
PPMR0106*	COLD WTR SUPPLY
PPMR0152	COMPRESSED AIR
PPMR0153	COMPRESSED AIR

Part No.	Legend
PPMR0154	CONDENSATE
PPMR0155	CONDENSATE RETURN
PPMR0108	DEIONIZED WATER
PPMR0109*	DOMESTIC COLD WTR
PPMR0110	DOM HOT WATER
PPMR0112	DRAIN
PPMR0111*	FIRE PROTECT WATER
PPMR0113	GAS
PPMR0114	GLYCOL
PPMR0116	HI PRESSURE AIR
PPMR0117*	HI PRESSURE STEAM
PPMR0118	HOT WATER
PPMR0119	HOT WATER RETURN
PPMR0120	HOT WATER SUPPLY
PPMR0115	MIXED GAS
PPMR0121	NATURAL GAS

Part No.	Legend
PPMR0122	NITROGEN
PPMR0123*	NON POTABLE WATER
PPMR0124	OIL
PPMR0125	OXYGEN
PPMR0126	PLANT AIR
PPMR0127*	POTABLE WATER
PPMR0128	PROPANE GAS
PPMR0129	RAW WATER
PPMR0130	SANITARY DRAIN
PPMR0131	SANITARY SEWER
PPMR0132	SPRINKLER FIRE
PPMR0133	SPRINKLER WATER

Part No.	Legend
PPMR0136	STEAM
PPMR0134	STEAM RETURN
PPMR0135	STEAM SUPPLY
PPMR0137	STORM DRAIN
PPMR0138	VACUUM
PPMR0139	VACUUM
PPMR0140	VENT
PPMR0141	WASTE WATER
PPMR0143	WATER
PPMR0142	WATER

\*Legends for 2" x 9" marker size will be abbreviated for space

**To Order:** Add size code after part number.

Example: Part No. PPMR0102 + Size Code B = PPMR0102B

Size Code	Pipe Diameter	Roll Size	Marker Size	Letter Height	UOM
B	Up to 2"	1" x 54-ft.	1" x 9"	3/4"	Roll
H	Up to 6"	2" x 54-ft.	2" x 9"	1 1/4"	Roll

**Roll Form Pipe Markers**

Wrap around virtually any size pipe when you have multiple pipes or pipes of unknown sizes.

- Unroll, measure, and easily cut to length on-site for proper fit
- 0.004" gloss, overlaminated poly vinyl marker wraps to adhere to itself

- High-tack, acrylic adhesive back stays on dirty, greasy, and rusty pipes
- Legend and arrow repeated, upright and upside-down, for universal direction and visibility
- Service temperature is -20° to 140°F
- Available 8" x 30-ft. or 12" x 30-ft. in rolls



Part No.	Legend
PPMR0028	AIR
PPMR0029	ARGON
PPMR0001	ASBESTOS FREE
PPMR0030	CARBON DIOXIDE
PPMR0002	CHLORINE
PPMR0003	CITY WATER
PPMR0004	COLD WATER
PPMR0006	COMPRESSED AIR
PPMR0005	COMPRESSED AIR
PPMR0007	CONDENSATE
PPMR0008	CONTAINS ASBESTOS
PPMR0009	DOMESTIC COLD WATER
PPMR0010	DRAIN

Part No.	Legend
PPMR0011	FIRE PROTECTION WATER
PPMR0031	FIRE SPRINKLER WATER
PPMR0012	GAS
PPMR0013	HOT WATER
PPMR0014	LOW PRESSURE STEAM
PPMR0015	NATURAL GAS
PPMR0016	NON-POTABLE WATER
PPMR0032	OXYGEN
PPMR0017	OXYGEN
PPMR0018	PLANT AIR
PPMR0019	POTABLE WATER
PPMR0020	PROCESS WATER
PPMR0021	RETURN

Part No.	Legend
PPMR0022	SPRINKLER FIRE
PPMR0023	SPRINKLER WATER
PPMR0024	STEAM
PPMR0025	VACUUM
PPMR0027	WATER
PPMR0026	WATER

**To Order:** Add size code after part number.

Example: Part No. PPMR0029 + Size Code H = PPMR0029H

Size Code	Pipe Diameter	Roll Size	Letter Height	UOM
B	Up to 2"	8" x 30-ft.	3/4"	Roll
H	Up to 6"	12" x 30-ft.	1 1/4"	Roll

## IIAR Ammonia Pipe Markers



Meets IIAR guidelines for proper pipe marking as specified in Bulletin No. 114.

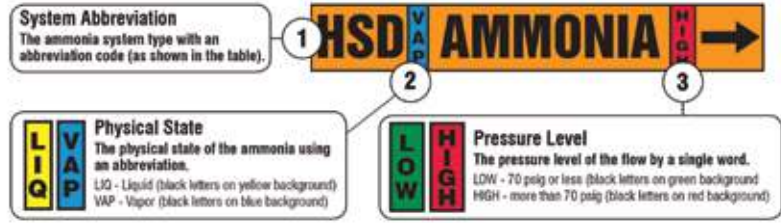
### Identify Ammonia refrigeration piping and system components.

- 0.004" flexible vinyl, self-sticking markers have high-tack adhesive backed with liner
- One legend with directional flow arrows on each end to cut off for proper placement
- Glossy UV-resistant surface withstands dust, dirt and grease
- Service temperature range is -20° to 176°F
- Install onto clean smooth pipe surface

**To Order:** Add size code after part number.

Example: Part No. PPMA3001 + Size Code A = PPMA3001A

Size Code	Pipe Diameter	Marker Size	UOM
A	3/4" x 1 1/4"	1" x 11"	Each
B	1 1/2" x 2"	1 1/2" x 15 7/8"	Each
C	2 1/2" x 6"	2 1/2" x 23 5/8"	Each
D	8" x 10"	3 1/2" x 33 1/2"	Each



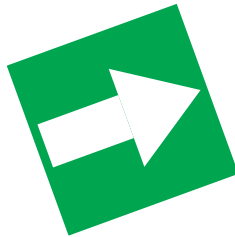
Self Stick Part No.	System	System Abbreviation	Physical State	Pressure Level
PPMA3001	Booster Discharge	BD	VAP	LOW
PPMA3002	Condenser Drain	CD	LIQ	HIGH
PPMA3003	Defrost Condensate	DC	LIQ	HIGH
PPMA3004	Hot Gas	HG	VAP	HIGH
PPMA3005	Hot Gas Defrost	HGD	VAP	HIGH
PPMA3006	High Pressure Liquid.	HPL	LIQ	HIGH
PPMA3007	High Stage Discharge	HSD	VAP	HIGH
PPMA3008	High Stage Suction	HSS	VAP	LOW
PPMA3009	High Temperature Recirculated Liquid	HTRL	LIQ	LOW
PPMA3010	High Temperature Recirculated Suction	HTRS	LIQ/VAP	LOW
PPMA3011	Liquid Injection Cooling	LIC	LIQ	HIGH
PPMA3012	Low Stage Suction	LSS	VAP	LOW
PPMA3013	Low Temperature Recirculated Liquid	LTRL	LIQ	LOW
PPMA3014	Low Temperature Recirculated Suction	LTRS	LIQ/VAP	LOW
PPMA3015	Low Temperature Suction	LTS	VAP	LOW
PPMA3016	Relief Vent	RV	—	—

## Duct Markers



### Mark air flow and its equipment purpose in duct work systems.

- Single legend printed on poly overlaminated self-stick vinyl
- High-tack adhesive back
- Available in two sizes



Part No.	Legend
PPMA41	EXHAUST
PPMA42	EXHAUST AIR
PPMA43	INTAKE AIR
PPMA44	OUTSIDE AIR

Part No.	Legend
PPMA45	RELIEF
PPMA46	RELIEF AIR
PPMA47	RETURN AIR
PPMA48	SUPPLY AIR

Available colors with color code:

Black/Yellow – BY, White/Green – WG, White/Blue – WBL

**To Order:** Add color code, then size code after part number.

Example: Part No. PPMA41 + Color Code BY + Size Code D = PPMA41BYD

Size Code	Pipe Diameter	Marker Size	Arrow Size	Letter Height	UOM
D	Up to 6"	2 1/2" x 12"	2 1/2" x 2 1/2"	1 1/4"	Each
H	Up to 10"	4" x 24"	4" x 4"	2 1/2"	Each

## Medical Gas Pipe Markers

### Identify the contents of medical gas piping systems.

- 0.004" gloss vinyl, 3" x 3" marker with legend repeated five times, upright and upside-down for universal fit and visibility
- Adhesive backed and peel-off liner
- Adhere to pipes up to 3/4" OD size
- Service temperature is -20° to 140°F
- 20 markers per package



Part No.	Legend
PPMA4001	CARBON DIOXIDE
PPMA4002	CYCLOPROPANE
PPMA4012	EVAC
PPMA4003	HELIUM
PPMA4010	INSTRUMENT AIR
PPMA4013	LABORATORY AIR
PPMA4004	MEDICAL AIR
PPMA4005	MEDICAL VACUUM

Part No.	Legend
PPMA4006	NATURAL GAS 2 PSI
PPMA4007	NITROGEN
PPMA4008	NITROUS OXIDE
PPMA4009	OXYGEN
PPMA4011	WAGD

Size	Std. Pkg. Qty.
3" x 3"	20



Meets NFPA 99C-Section 4-3.5.4.1. and CGA Pamphlet C-9 Section 4.1 color requirements