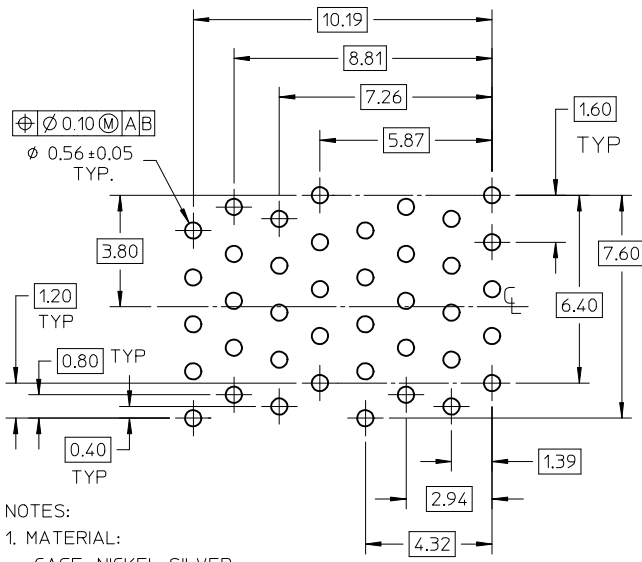


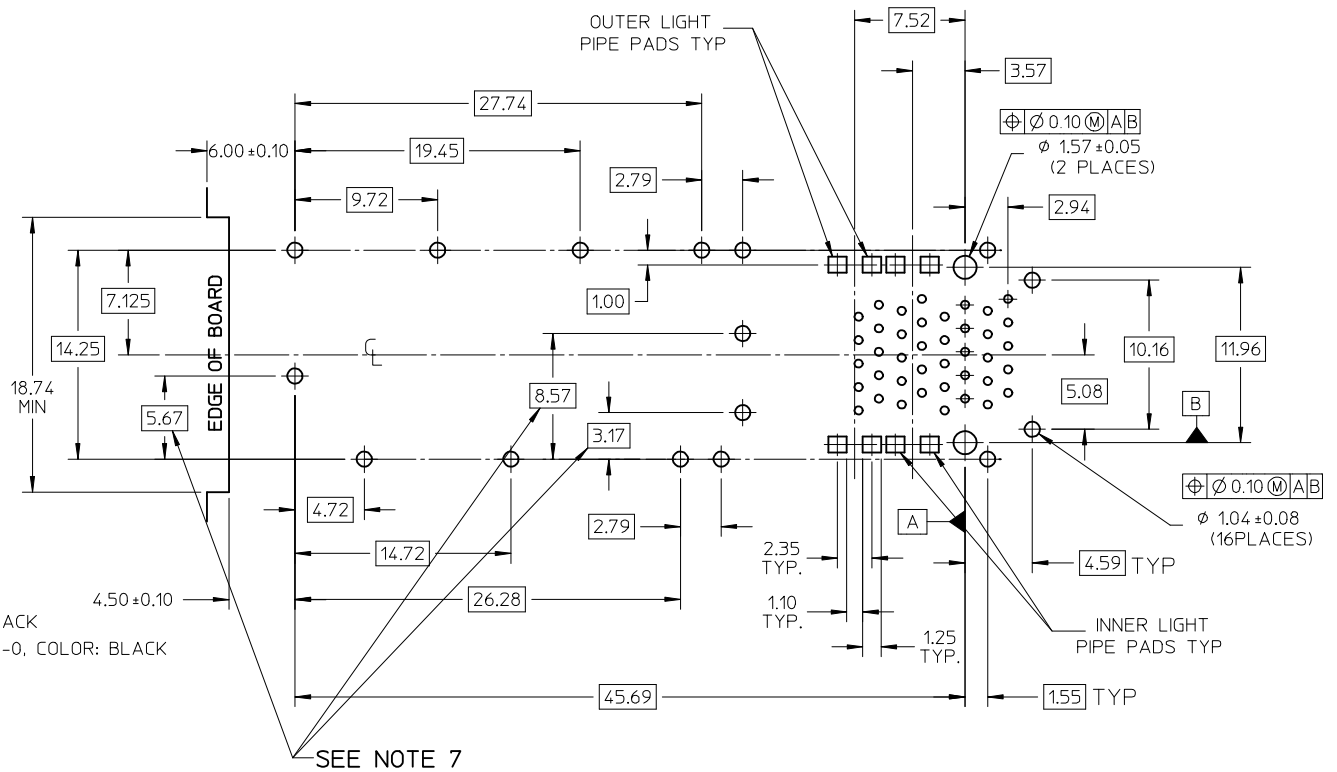
ADD NOTE 8 EC NO: UCP2008-0867 DRAWN BY: IBARRA 2007/11/13 CHKD: BARKER 2007/11/30 APPR: SMILLER 2007/12/03	QUALITY SYMBOLS ▽=0 ▽=0	GENERAL TOLERANCES (UNLESS SPECIFIED) <table border="1"> <thead> <tr> <th></th> <th>mm</th> <th>INCH</th> </tr> </thead> <tbody> <tr> <td>4 PLACES</td> <td>± ---</td> <td>± ---</td> </tr> <tr> <td>3 PLACES</td> <td>± ---</td> <td>± ---</td> </tr> <tr> <td>2 PLACES</td> <td>± 0.25</td> <td>± ---</td> </tr> <tr> <td>1 PLACE</td> <td>± ---</td> <td>± ---</td> </tr> </tbody> </table>		mm	INCH	4 PLACES	± ---	± ---	3 PLACES	± ---	± ---	2 PLACES	± 0.25	± ---	1 PLACE	± ---	± ---	DIMENSION STYLE MM ONLY	SCALE 3:1	DESIGN UNITS METRIC	THIRD ANGLE PROJECTION
		mm	INCH																		
	4 PLACES	± ---	± ---																		
	3 PLACES	± ---	± ---																		
2 PLACES	± 0.25	± ---																			
1 PLACE	± ---	± ---																			
DRAWN BY: JLONG CHECKED BY: JLONG APPROVED BY: REGNIER	DATE: 08-28-03 DATE: 08-28-03 DATE: 08-29-03	TITLE STACKED SFP 2X1 TALL ASSEMBLY WITH SOLDER TAILS AND LIGHT PIPES																			
DRAFT WHERE APPLICABLE MUST REMAIN WITHIN DIMENSIONS		MATERIAL NO. 753100001	MOLEX INCORPORATED		SHEET NO. 1 OF 3																
		DOCUMENT NO. SD-75310-100	THIS DRAWING CONTAINS INFORMATION THAT IS PROPRIETARY TO MOLEX INCORPORATED AND SHOULD NOT BE USED WITHOUT WRITTEN PERMISSION																		

TERMINAL TAIL PATTERN



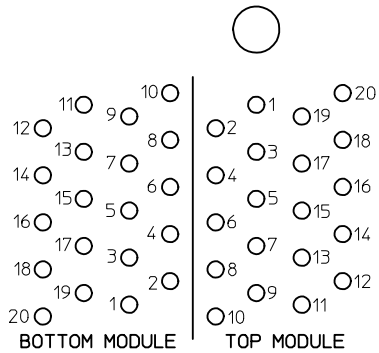
NOTES:

1. MATERIAL:
 - CAGE: NICKEL SILVER
 - SFP HOUSING: GLASS FILLED THERMOPLASTIC,UL: 94 V-0, COLOR: BLACK
 - OVERMOLD FOR TERMINALS: GLASS FILLED THERMOPLASTIC,UL: 94 V-0, COLOR: BLACK
 - LIGHT PIPE HOUSING: ZINC
 - LIGHT PIPE: POLYCARBONATE UL: 94 V-0, COLOR: CLEAR
 - TERMINALS: BRASS
 - GASKET: CONDUCTIVE SILICONE
2. FINISHES:
 - LIGHT PIPE HOUSING: 2.03 MICROMETERS MINIMUM NICKEL OVER 0.76 MICROMETERS MINIMUM COPPER
 - TERMINALS:
 - CONTACT AREA: 0.76 MICROMETERS MINIMUM HARD GOLD OVER NICKEL.
 - SOLDER TAIL: 1.90 MICROMETERS MINIMUM TIN OVER NICKEL.
3. REFER TO PS-75310-001 PRODUCT SPEC FOR ALL ELECTRICAL, MECHANICAL AND ENVIROMENTAL SPECIFICATIONS.
4. REFER TO PK-75310-001 FOR ALL PACKAGING SPECIFICATIONS.
5. PROCESSING: WAVE SOLDER (NOT REFLOW COMPATIBLE).
6. LIGHT PIPE PAD LAYOUT SHOWN IS FOR AN 0805 LOW-PROFILE LED PACKAGE. FOR OTHER RECOMMENDED LAYOUTS REFER TO MOLEX'S REPORT TS-75310-001.
7. THE CURVED TAILS THAT GO INTO THE HOLES LOCATED BY THESE DIMENSIONS ARE BEING ELIMINATED. TO ACCOMMODATE THIS CONVERSION, IT IS RECOMMENDED THAT BOARDS DESIGNED TO THIS PRINT REVISION INCLUDE THESE HOLES.
8. PART COMPLIES WITH COSMETIC SPECIFICATION PS-45499-002. SEE SHEET 3 SECTION Z-Z FOR SURFACE CLASSIFICATIONS. UNDERSIDE OF CAGE COMPLIES WITH CLASS "C".

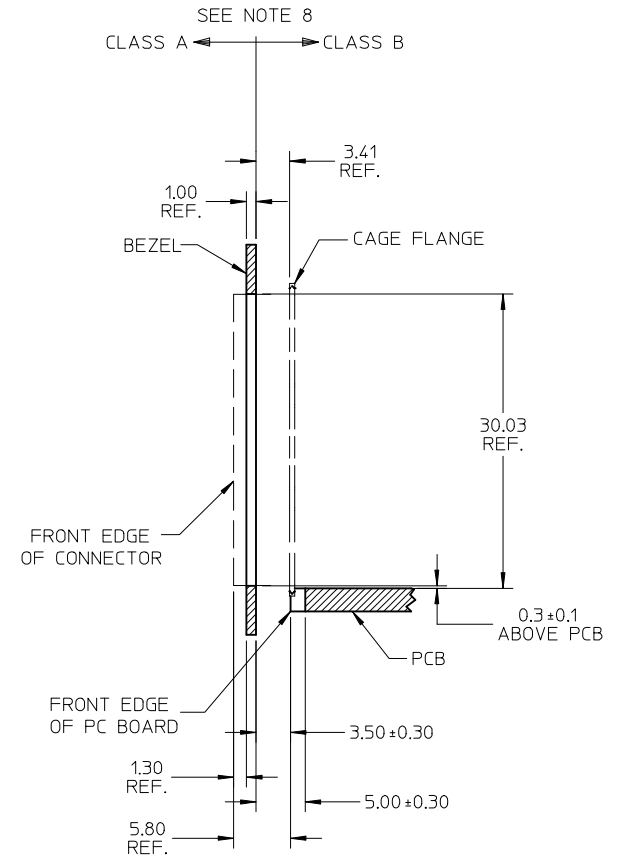
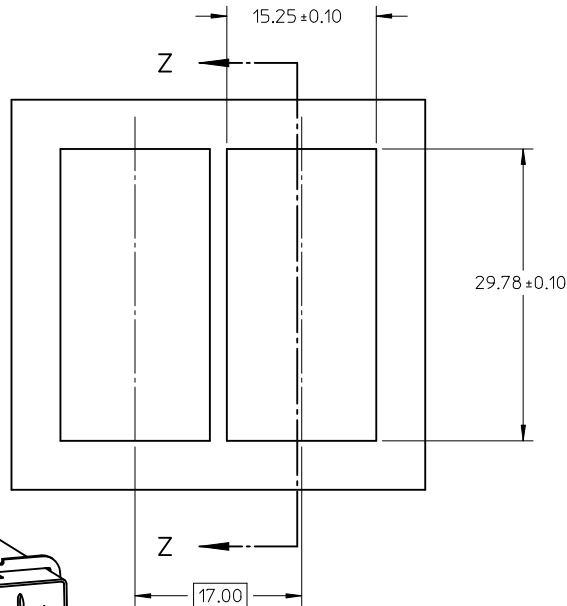
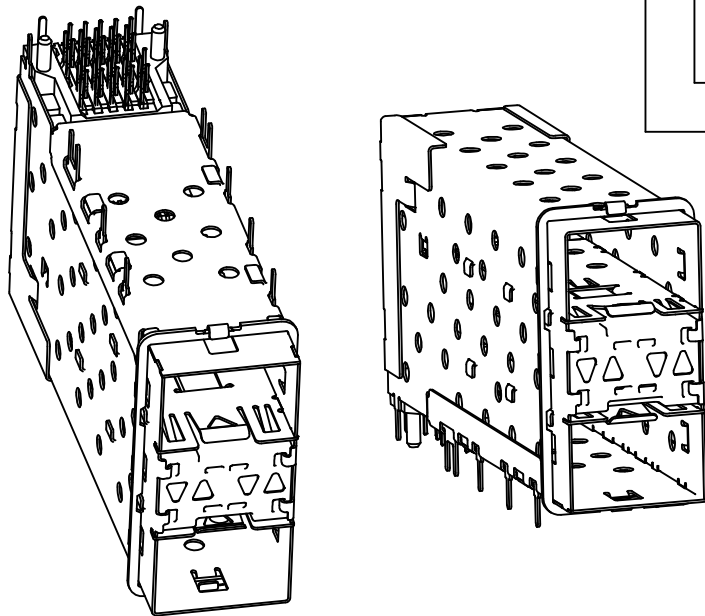


RECOMMENDED PCB LAYOUT
PCB THICKNESS 2.36
COMPONENT SIDE

ADD NOTE 8 EC NO: UCP2008-0867 DRW:MS IBARRA 2007/11/13 CHKD:BBARKER 2007/11/20 APPR:SMILLER 2007/12/03	DESCRIPTION REV	QUALITY SYMBOLS	GENERAL TOLERANCES (UNLESS SPECIFIED)	DIMENSION STYLE	SCALE	DESIGN UNITS	THIRD ANGLE PROJECTION	
		$\nabla=0$ $\nabla=0$	mm INCH 4 PLACES ± --- ± --- 3 PLACES ± --- ± --- 2 PLACES ± 0.25 ± --- 1 PLACE ± --- ± --- ANGULAR ± 5°	MM ONLY	3:1	METRIC	DRAWN BY JLONG DATE 08-28-03 CHECKED BY JLONG DATE 08-28-03 APPROVED BY REGNIER DATE 08-29-03 MATERIAL NO. 753100001	TITLE STACKED SFP 2X1 TALL ASSEMBLY WITH SOLDER TAILS AND LIGHT PIPES MOLEX INCORPORATED DOCUMENT NO. SD-75310-100
		DRAFT WHERE APPLICABLE MUST REMAIN WITHIN DIMENSIONS	SIZE B	THIS DRAWING CONTAINS INFORMATION THAT IS PROPRIETARY TO MOLEX INCORPORATED AND SHOULD NOT BE USED WITHOUT WRITTEN PERMISSION	SHEET NO. 2 OF 3			



CONNECTOR PIN-OUT
COMPONENT SIDE OF BOARD



SECTION Z-Z

COSMETIC CLASS EC NO: UCP2008-0867 DRWN: MSIBARRA 2007/11/13 CHKD: BBARKER 2007/11/30 APPR: SMILLER 2007/12/03	QUALITY SYMBOLS	GENERAL TOLERANCES (UNLESS SPECIFIED)	SCALE 2:1	DESIGN UNITS METRIC	THIRD ANGLE PROJECTION	REVISE ON CAD ONLY
	DESCRIPTION ▽ - 0 ◁ - 0	mm	INCH	DIMENSION STYLE		TITLE STACKED SFP 2X1 TALL ASSEMBLY WITH SOLDER TAILS AND LIGHT PIPES MOLEX INCORPORATED
		4 PLACES ± --- ± ---	MM ONLY	DRAWN BY	DATE	
		3 PLACES ± --- ± ---	JLONG	08-28-03		
2 PLACES ± 0.25 ± ---	CHECKED BY	DATE				
1 PLACE ± --- ± ---	JLONG	08-28-03				
	ANGULAR ± 5 °					
	DRAFT WHERE APPLICABLE	APPROVED BY	DATE	MATERIAL NO.	DOCUMENT NO.	SHEET NO.
	MUST REMAIN WITHIN DIMENSIONS	REGNIER	08-29-03	753100001	SD-75310-100	3 OF 3
THIS DRAWING CONTAINS INFORMATION THAT IS PROPRIETARY TO MOLEX INCORPORATED AND SHOULD NOT BE USED WITHOUT WRITTEN PERMISSION						