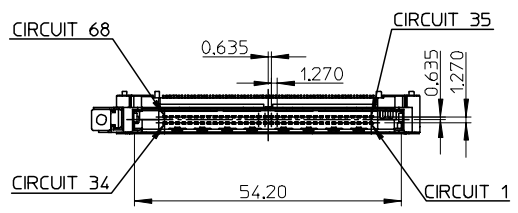
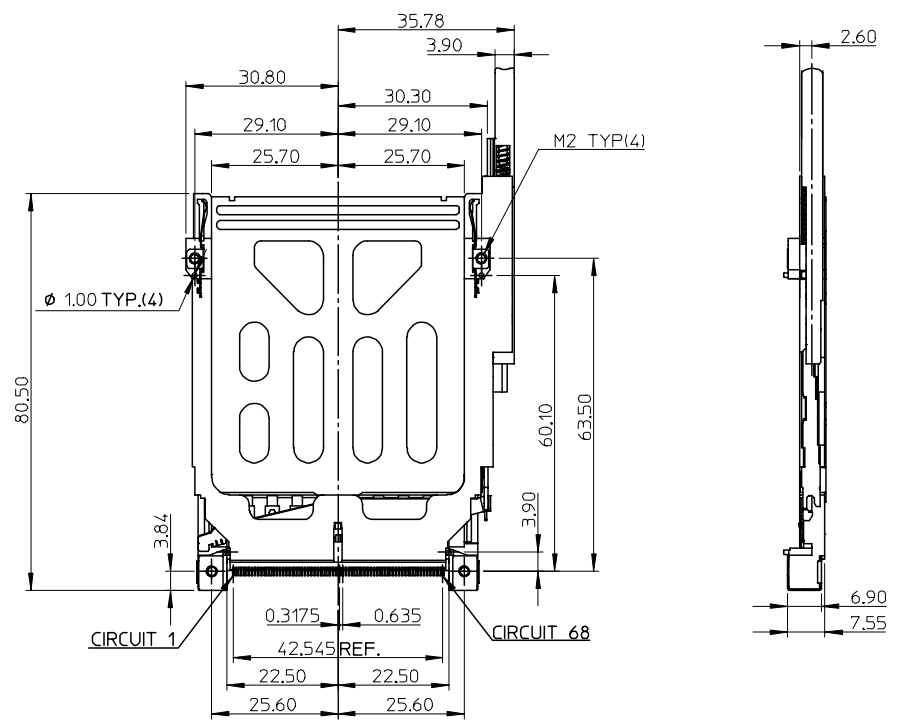
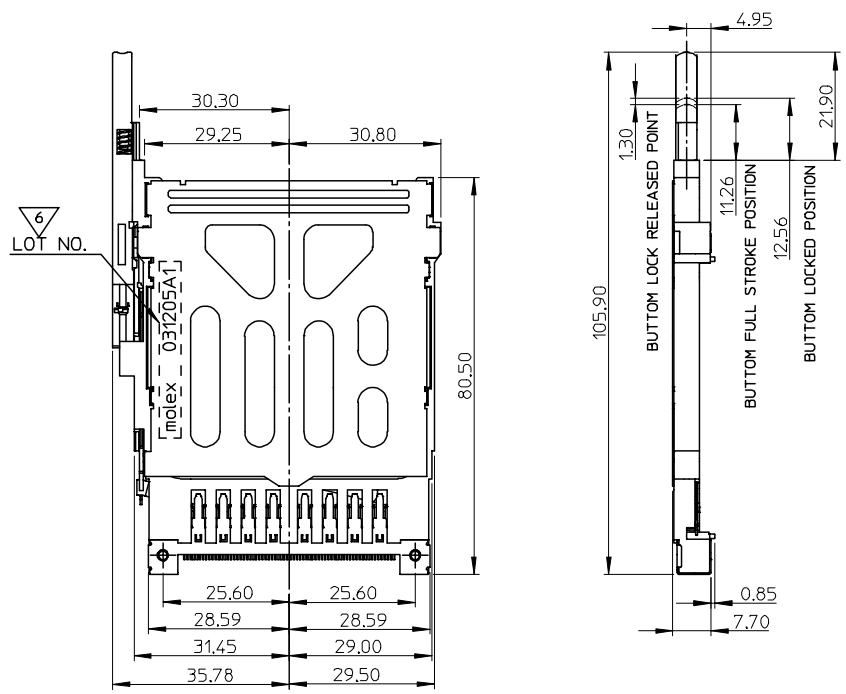


10 9 8 7 6 5 4 3 2 1

F



E

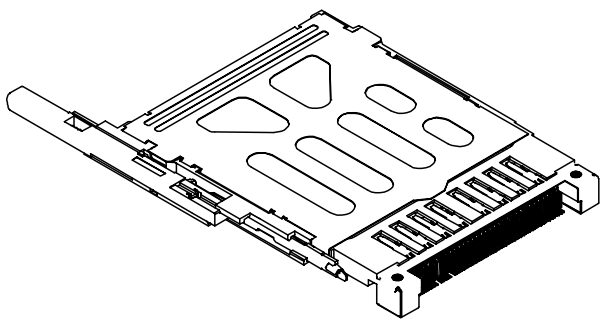


D

C

B

A



ADD RIB EC NO: T2004-0121 DRAWN:EVITA 2004/03/30 CHKD: APPR:	QUALITY SYMBOLS ▴ - 0 ▽ - 0 S - 0	GENERAL TOLERANCES (UNLESS SPECIFIED) 4 PLACES ± --- ± --- 3 PLACES ± --- ± --- 2 PLACES ± 0.25 ± --- 1 PLACE ± 0.25 ± --- ANGULAR ± 3 ° DRAFT WHERE APPLICABLE MUST REMAIN WITHIN DIMENSIONS	SCALE 1:1 DESIGN UNITS METRIC DIMENSION STYLE MM ONLY DRAWN BY ALLIN DATE '02/12/27 CHECKED BY WWSCHANG DATE '02/12/27 APPROVED BY ELAN DATE '02/12/27	THIRD ANGLE PROJECTION REVISE ON CAD ONLY TITLE ONE SLOT CARDBUS EJECT MECHANISM CONNECTOR EXTEND 2.2 MM MOLEX INCORPORATED MATERIAL NO. 67822-2201 DOCUMENT NO. SD-67822-002 SHEET NO. 1 OF 3
	THIS DRAWING CONTAINS INFORMATION THAT IS PROPRIETARY TO MOLEX INCORPORATED AND SHOULD NOT BE USED WITHOUT WRITTEN PERMISSION			
	A3			
	A3			

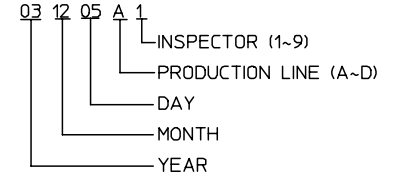
9 8 7 6 5 4 3 2 1

NO	NAME	MATERIAL	PLATING	PIECE
1	HOUSING	LIQUID CRYSTAL POLYMER, GLASS FILLED, UL-94-V0, COLOR : NATURAL(BLACK)		1
2	COVER PLATE	STEEL		1
3	GROUND TERMINAL	PHOSPHOR BRONZE	CONTACT AREA : GOLD, 0.3MICROMETER MIN. SOLDER AREA : TIN-LEAD, 0.2 MICROMETER MIN. UNDER PLATING : NICKEL	1
4	LEVER	STAINLESS		1
5	PUSH ROD	STAINLESS		1
6	SPRING PLATE	PHOSPHOR BRONZE		1
7	PIN PLATE	STAINLESS	ALL SURFACE : TIN-LEAD, 1.0 MIRCOMETER MIN. UNDER PLATING : NICKEL	1
8	COIL SPRING	STEEL		1
9	SLIDER	LIQUID CRYSTAL POLYMER, GLASS FILLED, UL-94-V0, COLOR : NATURAL(BLACK)		1
10	GROUND PLATE RIGHT	STEEL	ALL SURFACE : NICKEL, 3.0 MIRCOMETER MIN. UNDER PLATING : COPPER	1
11	GROUND PLATE LEFT			1
12	TERMINAL	PHOSPHOR BRONZE	CONTACT AREA : GOLD, 0.5MICROMETER MIN. SOLDER AREA : TIN-LEAD, 1.0 MICROMETER MIN. UNDER PLATING : NICKEL	68
13	NUT PLATE (M2)	STAINLESS		2
14	HEX NUT (M2)	STAINLESS	NICKEL	2

NOTES :

1. MATERIAL : SEE TABLE
2. PLATING : SEE TABLE
3. COPLANARITY TO BE 0.1mm MAX.
4. PRODUCT SPECIFICATION : PS-67822-001.
5. PACKAGE SPECIFICATION : PK-67822-002.

▽ LOT NO. TO BE PRINTED LETTER HEIGHT:2.9mm
COLOR:BLACK.



See Sheet 1 EC NO: T2004-0121 DRAWN:EVITA 2004/03/30 CHKD: APPR:	QUALITY SYMBOLS	GENERAL TOLERANCES (UNLESS SPECIFIED)	SCALE 1:1	DESIGN UNITS METRIC	THIRD ANGLE PROJECTION	REVISE ON CAD ONLY
	▽ = 0	mm INCH	DIMENSION STYLE MM ONLY		TITLE ONE SLOT CARDBUS EJECT MECHANISM CONNECTOR EXTEND 2.2 MM	
	∇ = 0	4 PLACES ± --- ± ---	DRAWN BY ALLIN	DATE '02/12/27	molex MOLEX INCORPORATED	
	∇ = 0	3 PLACES ± --- ± ---	CHECKED BY WWSCHANG	DATE '02/12/27		
	∇ = 0	2 PLACES ± 0.25 ± ---	DRAFT WHERE APPLICABLE MUST REMAIN WITHIN DIMENSIONS		MATERIAL NO. 67822-2201	DOCUMENT NO. SD-67822-002
∇ = 0	1 PLACE ± 0.25 ± ---	ANGULAR ± 3 °		THIS DRAWING CONTAINS INFORMATION THAT IS PROPRIETARY TO MOLEX INCORPORATED AND SHOULD NOT BE USED WITHOUT WRITTEN PERMISSION		

F

E

D

C

B

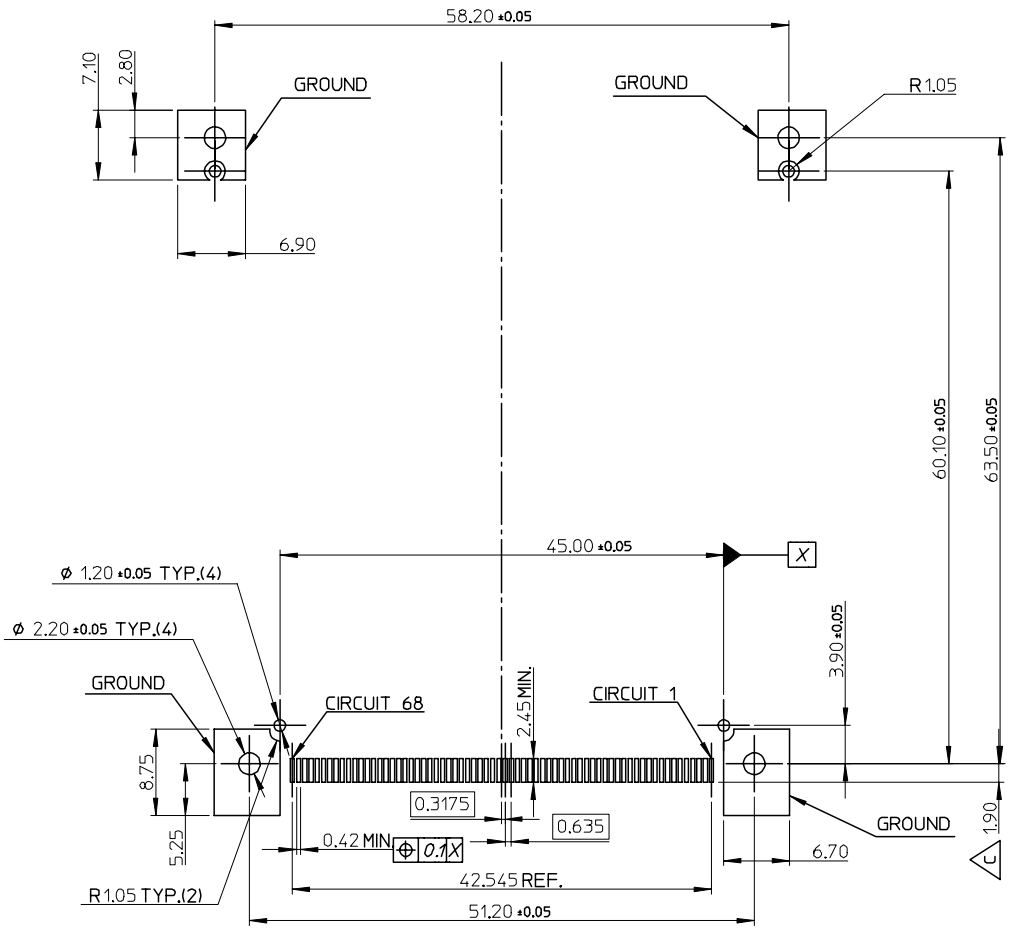
A

A3

10 9 8 7 6 5 4 3 2 1

F
E
D
C
B
A

F
E
D
C
B
A



RECOMMENDED P.C.B. LAYOUT

See sheet 1
 EC NO: T2004-0121
 DRAWN: EVITA 2004/03/30
 CHKD:
 APPR:

REV	DESCRIPTION
▽ = 0	QUALITY SYMBOLS
∇ = 0	
∇ = 0	

GENERAL TOLERANCES (UNLESS SPECIFIED)	
4 PLACES	± ---
3 PLACES	± ---
2 PLACES	± 0.25
1 PLACE	± 0.25
ANGULAR ± 3 °	
DRAFT WHERE APPLICABLE	
MUST REMAIN WITHIN DIMENSIONS	

SCALE	DESIGN UNITS
2:1	METRIC
DIMENSION STYLE	
MM ONLY	
DRAWN BY	DATE
ALLIN	'02/12/27
CHECKED BY	DATE
WWSCHANG	'02/12/27
APPROVED BY	DATE
ELAN	'02/12/27

THIRD ANGLE PROJECTION		REVISE ON CAD ONLY	
TITLE			
ONE SLOT CARBUS EJECT MECHANISM CONNECTOR EXTEND 2.2 MM			
molex MOLEX INCORPORATED			
MATERIAL NO.	DOCUMENT NO.	SHEET NO.	
67822-2201	SD-67822-002	3 OF 3	
THIS DRAWING CONTAINS INFORMATION THAT IS PROPRIETARY TO MOLEX INCORPORATED AND SHOULD NOT BE USED WITHOUT WRITTEN PERMISSION			

9 8 7 6 5 4 3 2 1