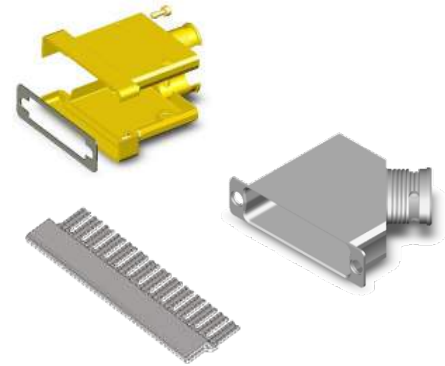


Features and Benefits

- Standard and Haloring variant
- Ultra-light weight
- Solid fully machined aluminium alloy material
- Non-Magnetic
- EMI application

Typical Applications

- Space equipment (engineering model, constellations)
- Satellites harnesses
- Avionics/ Military



Specification

- High performance D-SUB Lightweight Backshells and Haloring meet stringent tests for residual magnetism and are suitable for use in Space Engineering Model, Avionics and Military applications.
- Suitable for Board to Cable or Cable to Cable applications.
- Shell sizes available: E, A, B, C, D and F
- 3 variants:
 - Standard Lightweight Backshell
 - Lightweight Backshell for EMI Application
 - Lightweight Backshell Haloring Compatible

Quality Level

- “Commercial Space Grade”.
- C&K Specification CS FR022, for low cost products manufactured:
 - In the same ESA qualified site
 - Through the same piece parts
 - With lighter controls, documentation and traceability

The backshells are totally compatible, interchangeable and intermateable with ESA quality level connectors ESCC 3401/001 (D*M connectors), 3401/002 (D*MA connectors) and 3401/072 (Backshells).

Options

- Haloring – Be ordered separately.
- Male screwlock with clip - Be ordered separately.

Packaging

- Individual packaging.

Characteristics


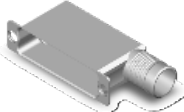

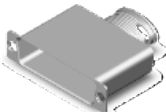
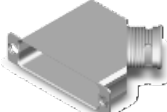
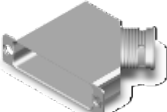
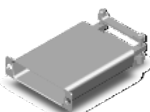

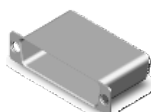
CHARACTERISTIC	SPECIFICATION
Operating temperature range	-55/+125 °C
Storage temperature range	-55/+125 °C
Residual Magnetism Level	200 Gamma max.

MATERIALS & FINISHES

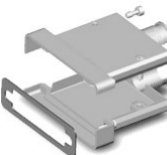
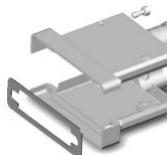
COMPONENT	MATERIAL	FINISH
Backshell	Aluminium Alloy 6061-T6	Code A174: 25.4 µm min. electroless Nickel Code FR172: 0.7 µm min. Gold over 25.4 µm min. electroless Nickel
Haloring	Copper Alloy	5µm min. Silver
Screws	Brass	0.7 µm Gold over 1 µm min. Cu
EMI Gasket	Silicone conductive elastomer	None

PRODUCT LIST

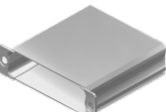
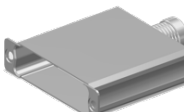
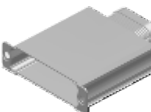
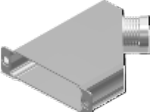
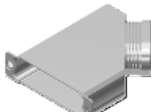
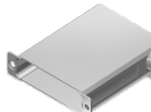
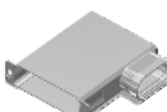
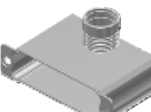
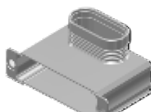
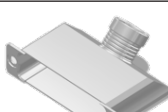
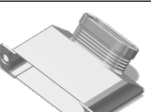

STANDARD LIGHTWEIGHT BACKSHELL

 90° Circular Right Outlet Page 4	 90° Circular Left Outlet Page 5	 Top Circular Outlet Page 6
 Top Elliptical Outlet Page 7	 45° Elliptical Right Outlet Page 8	 45° Elliptical Left Outlet Page 9
 Saddle Clamp Top Outlet Page 10	 Closed Extra Shorting Can Page 11	 Closed Shorting Can Page 12

LIGHTWEIGHT BACKSHELL - EMI APPLICATION

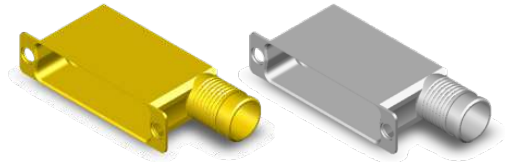
 Top Cylindrical Outlet - Rear Mounting Page 14	 Top Cylindrical Outlet - Front Mounting Page 16
---	---

LIGHTWEIGHT BACKSHELLS - HALORING COMPATIBLE AND HALORING

 Closed Shorting Can Page 19	 Top Circular Outlet Page 20	 Top Elliptical Outlet Page 21
 45° Circular Outlet Page 22	 45° Elliptical Outlet Page 23	 90° Circular Outlet Page 24
 90° Elliptical Outlet Page 25	 90° Top Circular Outlet Page 26	 90° Top Elliptical Outlet Page 27
 45° Top Circular Outlet Page 28	 45° Top Elliptical Outlet Page 29	 Haloring Page 30

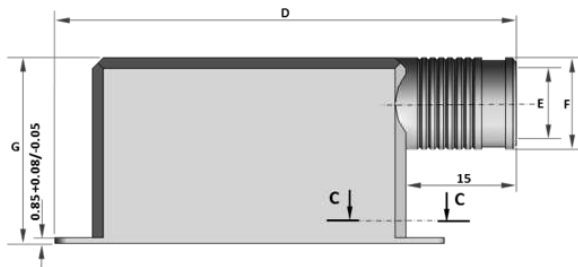
STANDARD BACKSHELL LIGHTWEIGHT

D-Sub Lightweight Backshell
90° Circular - Right Outlet
(Our design accepts right or left mounting)

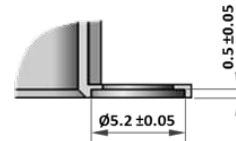


DIMENSIONS & WEIGHT

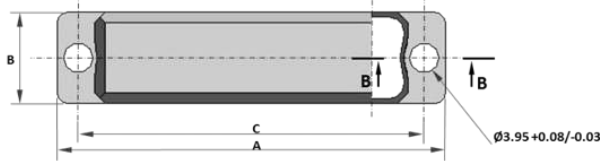
		Value							Weight (grams)
		A ±0.2	B ±0.15	C ±0.13	D ±0.50	E ±0.15	F ±0.15	G ±0.50	
Shell Size	E	30.68	12.50	24.99	40.60	7.00	9.00	25.40	7
	A	39.01	12.50	33.32	49.00	10.00	12.00	25.40	10
	B	52.91	12.50	47.04	62.70	10.50	12.50	25.40	13.5
	C	69.19	12.50	63.50	79.20	10.50	12.50	25.40	18
	D	66.80	15.30	61.11	76.70	13.30	15.30	25.40	23
	F	69.30	17.30	63.50	79.90	15.30	17.30	35.40	28



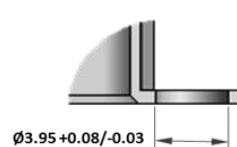
Detail B-B



Configuration Sizes E-A-B-C-D




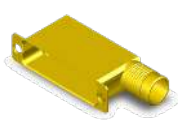
Detail A-A



Configuration Size F



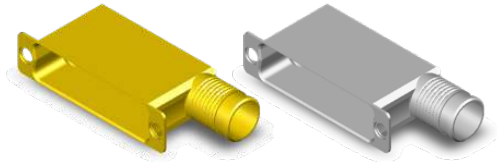
DESCRIPTION & PART NUMBERS

SHELL FINISH	SHELL SIZE	ESA/ESCC DESCRIPTION	C&K PART NUMBER
 Electroless Nickel	E	DE-BCKS-05-NMB-A174-FR022	C115366-2606B
	A	DA-BCKS-05-NMB-A174-FR022	C115366-2607B
	B	DB-BCKS-05-NMB-A174-FR022	C115366-2608B
	C	DC-BCKS-05-NMB-A174-FR022	C115366-2609B
	D	DD-BCKS-05-NMB-A174-FR022	C115366-2610B
	F	DF-BCKS-05-NMB-A174-FR022	C115366-2691B
 Gold	E	DE-BCKS-05-NMB-FR172-FR022	C115366-2606A
	A	DA-BCKS-05-NMB-FR172-FR022	C115366-2607A
	B	DB-BCKS-05-NMB-FR172-FR022	C115366-2608A
	C	DC-BCKS-05-NMB-FR172-FR022	C115366-2609A
	D	DD-BCKS-05-NMB-FR172-FR022	C115366-2610A
	F	DF-BCKS-05-NMB-FR172-FR022	C115366-2691A



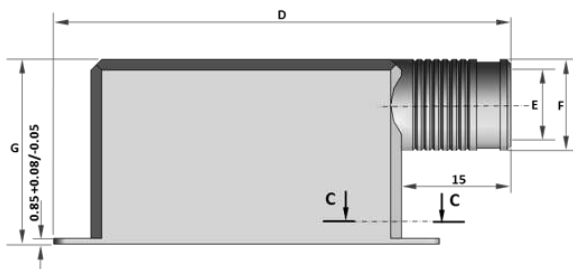
Dimensions shown in: mm
 Specifications and dimensions subject to change

D-Sub Lightweight Backshell
90° Circular - Left Outlet
(Our design accepts right or left mounting)

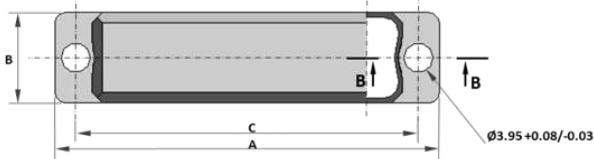


DIMENSIONS & WEIGHT

		Value							Weight (grams)
		A ±0.2	B ±0.15	C ±0.13	D ±0.50	E ±0.15	F ±0.15	G ±0.50	
Shell Size	E	30.68	12.50	24.99	40.60	7.00	9.00	25.40	7
	A	39.01	12.50	33.32	49.00	10.00	12.00	25.40	10
	B	52.91	12.50	47.04	62.70	10.50	12.50	25.40	13.5
	C	69.19	12.50	63.50	79.20	10.50	12.50	25.40	18
	D	66.80	15.30	61.11	76.70	13.30	15.30	25.40	23
	F	69.30	17.30	63.50	79.90	15.30	17.30	35.40	28



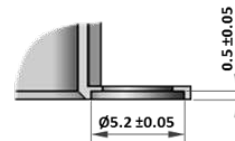
Configuration Sizes E-A-B-C-D



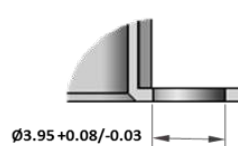
Configuration Size F




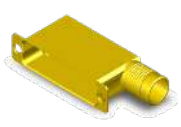
Detail B-B



Detail A-A

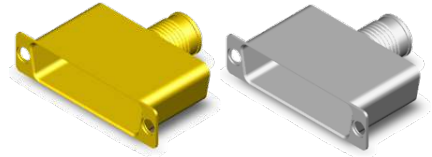


DESCRIPTION & PART NUMBERS

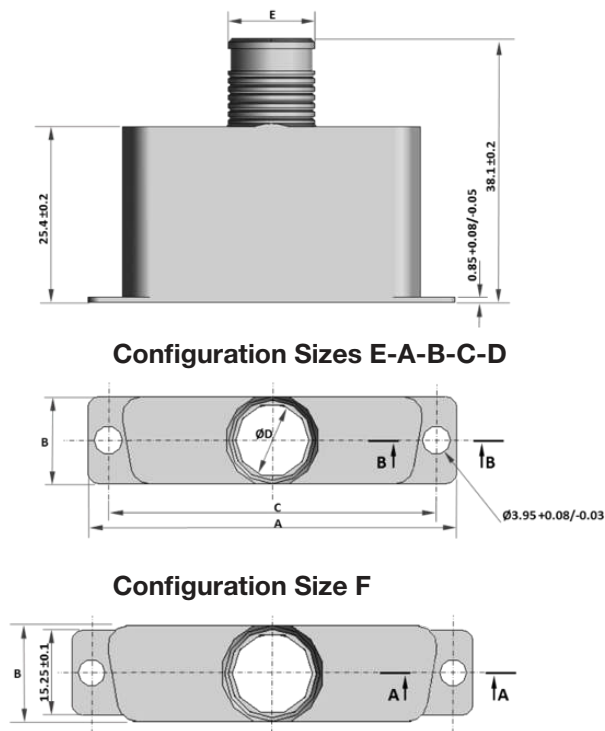
SHELL FINISH	SHELL SIZE	ESA/ESCC DESCRIPTION	C&K PART NUMBER
 Electroless Nickel	E	DE-BCKS-06-NMB-A174-FR022	C115366-2611B
	A	DA-BCKS-06-NMB-A174-FR022	C115366-2612B
	B	DB-BCKS-06-NMB-A174-FR022	C115366-2613B
	C	DC-BCKS-06-NMB-A174-FR022	C115366-2614B
	D	DD-BCKS-06-NMB-A174-FR022	C115366-2615B
	F	DF-BCKS-05-NMB-A174-FR022	C115366-2691B
 Gold	E	DE-BCKS-06-NMB-FR172-FR022	C115366-2611A
	A	DA-BCKS-06-NMB-FR172-FR022	C115366-2612A
	B	DB-BCKS-06-NMB-FR172-FR022	C115366-2613A
	C	DC-BCKS-06-NMB-FR172-FR022	C115366-2614A
	D	DD-BCKS-06-NMB-FR172-FR022	C115366-2615A
	F	DF-BCKS-05-NMB-FR172-FR022	C115366-2691A

Dimensions shown in: mm
 Specifications and dimensions subject to change

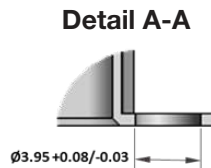
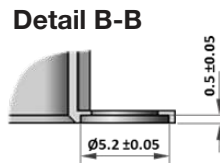
D-Sub Lightweight Backshell Top Circular Outlet



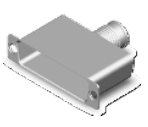
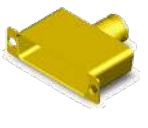
DIMENSIONS & WEIGHT



		Value					Weight (grams)
		A ± 0.2	B ± 0.15	C ± 0.13	D ± 0.20	E ± 0.15	
Shell Size	E	30.68	12.50	24.99	7.00	9.00	6.5
	A	39.01	12.50	33.32	10.00	12.00	8.5
	B	52.91	12.50	47.04	10.50	12.50	11.5
	C	69.19	12.50	63.50	10.50	12.50	13.5
	D	66.80	15.30	61.11	13.30	15.30	14.5
	F	69.30	17.30	63.50	15.30	17.30	16.5



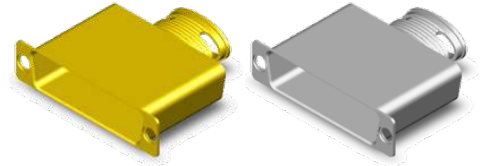
DESCRIPTION & PART NUMBERS

SHELL FINISH	SHELL SIZE	ESA/ESCC DESCRIPTION	C&K PART NUMBER
 Electroless Nickel	E	DE-BCKS-07-NMB-A174-FR022	C115366-2616B
	A	DA-BCKS-07-NMB-A174-FR022	C115366-2617B
	B	DB-BCKS-07-NMB-A174-FR022	C115366-2618B
	C	DC-BCKS-07-NMB-A174-FR022	C115366-2619B
	D	DD-BCKS-07-NMB-A174-FR022	C115366-2620B
	F	DF-BCKS-07-NMB-A174-FR022	C115366-2692B
 Gold	E	DE-BCKS-07-NMB-FR172-FR022	C115366-2616A
	A	DA-BCKS-07-NMB-FR172-FR022	C115366-2617A
	B	DB-BCKS-07-NMB-FR172-FR022	C115366-2618A
	C	DC-BCKS-07-NMB-FR172-FR022	C115366-2619A
	D	DD-BCKS-07-NMB-FR172-FR022	C115366-2620A
	F	DF-BCKS-07-NMB-FR172-FR022	C115366-2692A



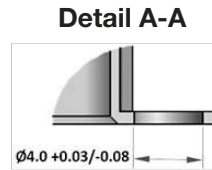
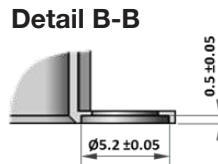
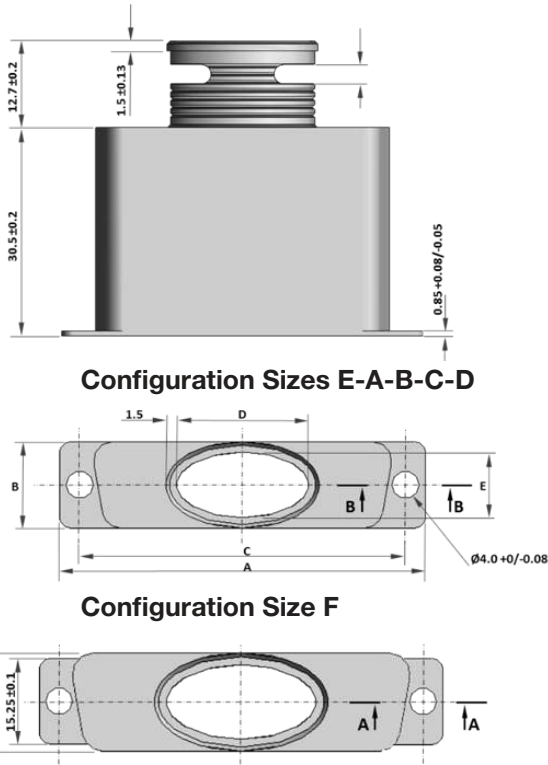
Dimensions shown in: mm
Specifications and dimensions subject to change

D-Sub Lightweight Backshell Top Elliptical Outlet


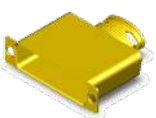


DIMENSIONS & WEIGHT

		Value					Weight (grams)
		A ±0.2	B ±0.15	C ±0.13	D ±0.38	E ±0.15	
Shell Size	E	30.68	12.50	24.99	12.70	9.50	8
	A	39.01	12.50	33.32	15.87	9.50	13
	B	52.91	12.50	47.04	19.05	9.50	18
	C	69.19	12.50	63.50	25.40	9.50	23
	D	66.80	15.30	61.11	22.22	12.30	28
	F	69.30	17.30	63.50	32.00	14.30	33

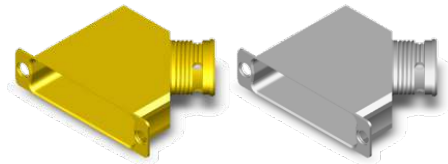


DESCRIPTION & PART NUMBERS

SHELL FINISH	SHELL SIZE	ESA/ESCC DESCRIPTION	C&K PART NUMBER
 Electroless Nickel	E	DE-BCKS-11-NMB-A174-FR022	C115366-2622B
	A	DA-BCKS-11-NMB-A174-FR022	C115366-2623B
	B	DB-BCKS-11-NMB-A174-FR022	C115366-2624B
	C	DC-BCKS-11-NMB-A174-FR022	C115366-2625B
	D	DD-BCKS-11-NMB-A174-FR022	C115366-2626B
	F	DF-BCKS-11-NMB-A174-FR022	C115366-2693B
 Gold	E	DE-BCKS-11-NMB-FR172-FR022	C115366-2622A
	A	DA-BCKS-11-NMB-FR172-FR022	C115366-2623A
	B	DB-BCKS-11-NMB-FR172-FR022	C115366-2624A
	C	DC-BCKS-11-NMB-FR172-FR022	C115366-2625A
	D	DD-BCKS-11-NMB-FR172-FR022	C115366-2626A
	F	DF-BCKS-11-NMB-FR172-FR022	C115366-2693A

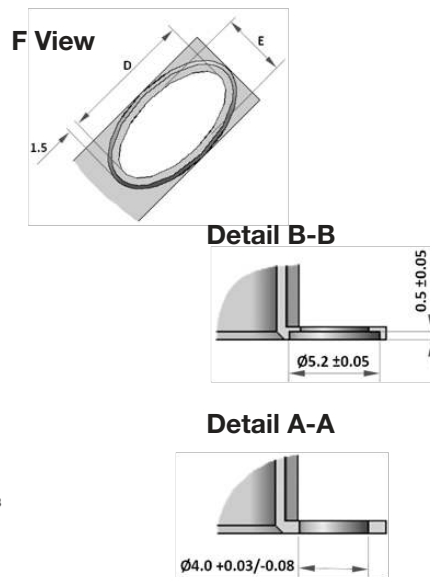
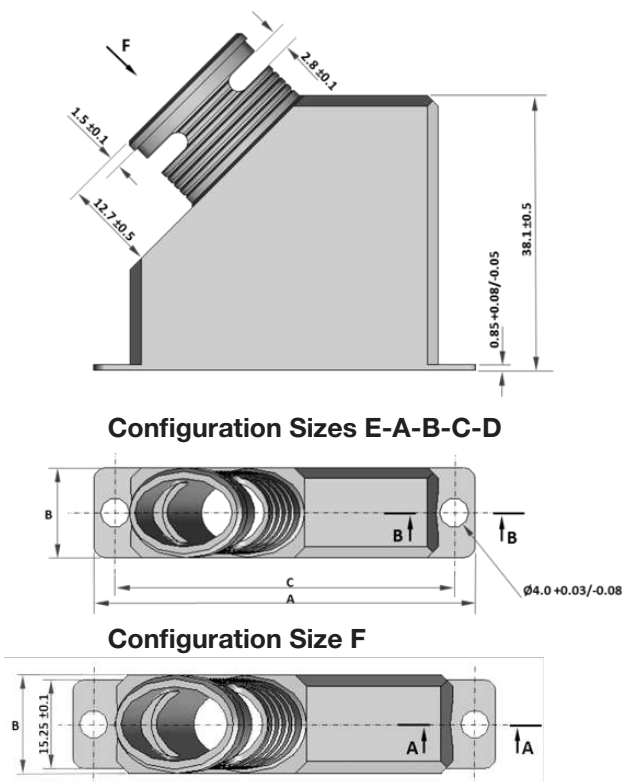
Dimensions shown in: mm
Specifications and dimensions subject to change

D-Sub Lightweight Backshell
45° Elliptical - Right Outlet
(Our design accepts right or left mounting)

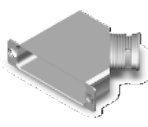
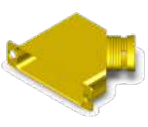


DIMENSIONS & WEIGHT

		Value					Weight (grams)
		A ±0.2	B ±0.15	C ±0.13	D ±0.38	E ±0.15	
Shell Size	E	30.68	12.50	24.99	12.70	9.50	10
	A	39.01	12.50	33.32	15.87	9.50	14
	B	52.91	12.50	47.04	19.05	9.50	20
	C	69.19	12.50	63.50	25.40	9.50	26
	D	66.80	15.30	61.11	22.22	12.30	33
	F	69.30	17.30	63.50	29.00	14.30	40



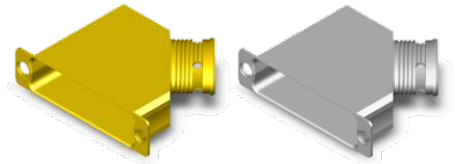
DESCRIPTION & PART NUMBERS

SHELL FINISH	SHELL SIZE	ESA/ESCC DESCRIPTION	C&K PART NUMBER
 Electroless Nickel	E	DE-BCKS-08-NMB-A174-FR022	C115366-2627B
	A	DA-BCKS-08-NMB-A174-FR022	C115366-2628B
	B	DB-BCKS-08-NMB-A174-FR022	C115366-2629B
	C	DC-BCKS-08-NMB-A174-FR022	C115366-2630B
	D	DD-BCKS-08-NMB-A174-FR022	C115366-2631B
	F	DF-BCKS-08-NMB-A174-FR022	C115366-2694B
 Gold	E	DE-BCKS-08-NMB-FR172-FR022	C115366-2627A
	A	DA-BCKS-08-NMB-FR172-FR022	C115366-2628A
	B	DB-BCKS-08-NMB-FR172-FR022	C115366-2629A
	C	DC-BCKS-08-NMB-FR172-FR022	C115366-2630A
	D	DD-BCKS-08-NMB-FR172-FR022	C115366-2631A
	F	DF-BCKS-08-NMB-FR172-FR022	C115366-2694A

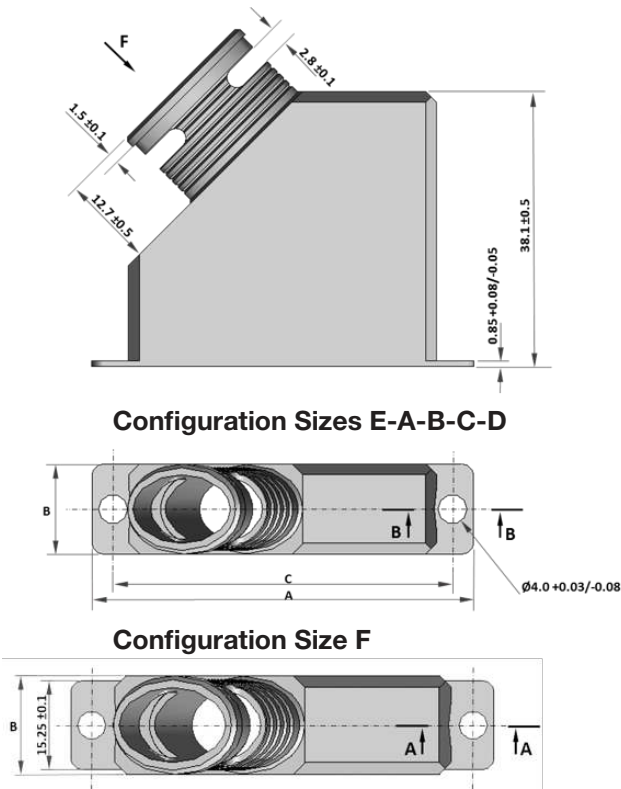


Dimensions shown in: mm
 Specifications and dimensions subject to change

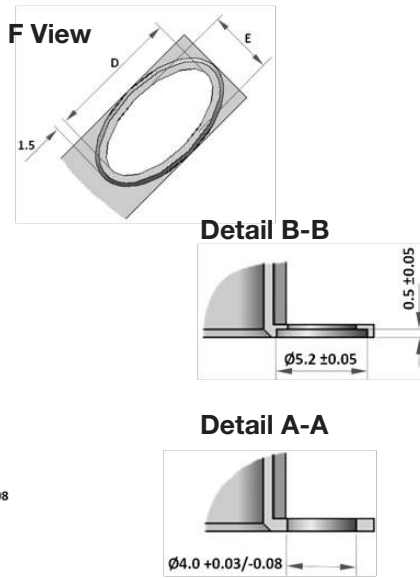
D-Sub Lightweight Backshell
45° Elliptical - Left Outlet
(Our design accepts right or left mounting)



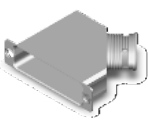
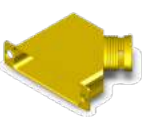
DIMENSIONS & WEIGHT



		Value					Weight (grams)
		A ±0.2	B ±0.15	C ±0.13	D ±0.38	E ±0.15	
Shell Size	E	30.68	12.50	24.99	12.70	9.50	10
	A	39.01	12.50	33.32	15.87	9.50	14
	B	52.91	12.50	47.04	19.05	9.50	20
	C	69.19	12.50	63.50	25.40	9.50	26
	D	66.80	15.30	61.11	22.22	12.30	33
	F	69.30	17.30	63.50	29.00	14.30	40



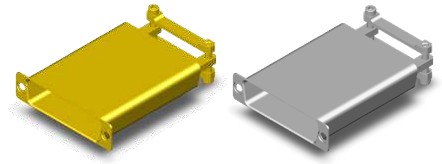
DESCRIPTION & PART NUMBERS

SHELL FINISH	SHELL SIZE	ESA/ESCC DESCRIPTION	C&K PART NUMBER
 Electroless Nickel	E	DE-BCKS-09-NMB-A174-FR022	C115366-2632B
	A	DA-BCKS-09-NMB-A174-FR022	C115366-2633B
	B	DB-BCKS-09-NMB-A174-FR022	C115366-2634B
	C	DC-BCKS-09-NMB-A174-FR022	C115366-2635B
	D	DD-BCKS-09-NMB-A174-FR022	C115366-2636B
	F	DF-BCKS-08-NMB-A174-FR022	C115366-2694B
 Gold	E	DE-BCKS-09-NMB-FR172-FR022	C115366-2632A
	A	DA-BCKS-09-NMB-FR172-FR022	C115366-2633A
	B	DB-BCKS-09-NMB-FR172-FR022	C115366-2634A
	C	DC-BCKS-09-NMB-FR172-FR022	C115366-2635A
	D	DD-BCKS-09-NMB-FR172-FR022	C115366-2636A
	F	DF-BCKS-08-NMB-FR172-FR022	C115366-2694A

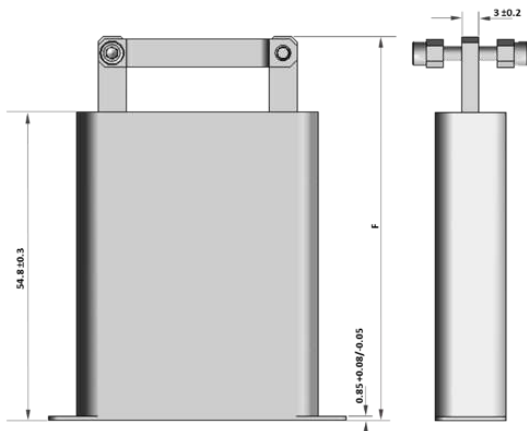
Dimensions shown in: mm
 Specifications and dimensions subject to change



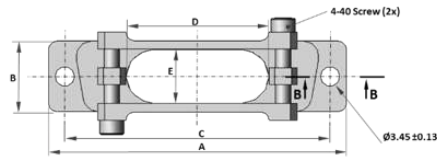
D-Sub Lightweight Backshell Saddle Clamp Top Outlet



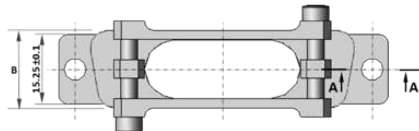
DIMENSIONS & WEIGHT



Configuration Sizes E-A-B-C-D

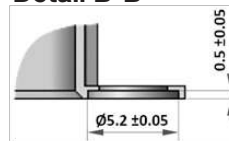


Configuration Size F

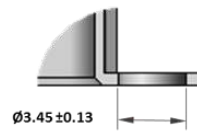


		Value						Weight (grams)
		A ±0.2	B ±0.15	C ±0.13	D ±0.30	E ±0.25	F ±0.5	
Shell Size	E	30.68	12.50	24.99	9.50	9.50	66.75	15.5
	A	39.01	12.50	33.32	18.10	9.50	66.75	19
	B	52.91	12.50	47.04	25.40	9.50	68.35	23
	C	69.19	12.50	63.50	34.90	9.50	68.35	29
	D	66.80	15.30	61.11	35.70	11.90	68.35	33
	F	69.30	17.30	63.50	47.00	13.90	68.35	37

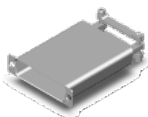
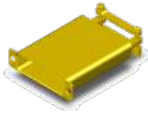
Detail B-B



Detail A-A



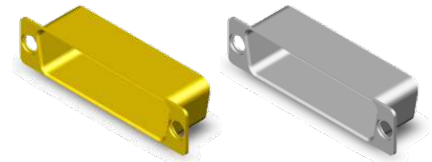
DESCRIPTION & PART NUMBERS

SHELL FINISH	SHELL SIZE	ESA/ESCC DESCRIPTION	C&K PART NUMBER
 Electroless Nickel	E	DE-BCKS-01-NMB-A174-FR022	C115366-2586B
	A	DA-BCKS-01-NMB-A174-FR022	C115366-2587B
	B	DB-BCKS-01-NMB-A174-FR022	C115366-2588B
	C	DC-BCKS-01-NMB-A174-FR022	C115366-2589B
	D	DD-BCKS-01-NMB-A174-FR022	C115366-2590B
	F	DF-BCKS-01-NMB-A174-FR022	C115366-2687B
 Gold	E	DE-BCKS-01-NMB-FR172-FR022	C115366-2586A
	A	DA-BCKS-01-NMB-FR172-FR022	C115366-2587A
	B	DB-BCKS-01-NMB-FR172-FR022	C115366-2588A
	C	DC-BCKS-01-NMB-FR172-FR022	C115366-2589A
	D	DD-BCKS-01-NMB-FR172-FR022	C115366-2590A
	F	DF-BCKS-01-NMB-FR172-FR022	C115366-2687A



*Dimensions shown in: mm
Specifications and dimensions subject to change*

D-Sub Lightweight Backshell Closed - Extra Shorting Can

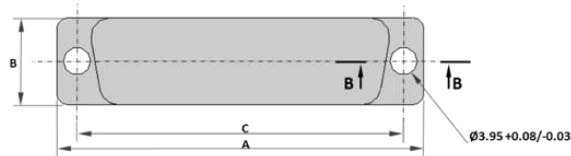


DIMENSIONS & WEIGHT

		Value			Weight (grams)
		A ±0.2	B ±0.15	C ±0.13	
Shell Size	E	30.68	12.50	24.99	8
	A	39.01	12.50	33.32	10
	B	52.91	12.50	47.04	14
	C	69.19	12.50	63.50	20
	D	66.80	15.30	61.11	26
	F	69.30	17.30	63.50	30



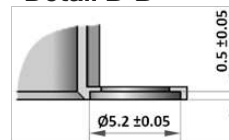
Configuration Sizes E-A-B-C-D



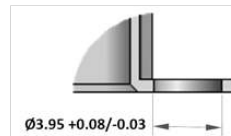
Configuration Size F



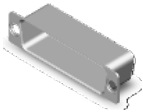
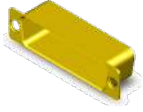
Detail B-B



Detail A-A

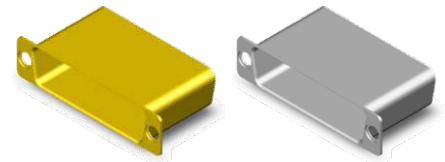


DESCRIPTION & PART NUMBERS

SHELL FINISH	SHELL SIZE	ESA/ESCC DESCRIPTION	C&K PART NUMBER
 Electroless Nickel	E	DE-BCKS-10-NMB-A174-FR022	C115366-2637B
	A	DA-BCKS-10-NMB-A174-FR022	C115366-2638B
	B	DB-BCKS-10-NMB-A174-FR022	C115366-2639B
	C	DC-BCKS-10-NMB-A174-FR022	C115366-2640B
	D	DD-BCKS-10-NMB-A174-FR022	C115366-2641B
	F	DF-BCKS-10-NMB-A174-FR022	C115366-2695B
 Gold	E	DE-BCKS-10-NMB-FR172-FR022	C115366-2637A
	A	DA-BCKS-10-NMB-FR172-FR022	C115366-2638A
	B	DB-BCKS-10-NMB-FR172-FR022	C115366-2639A
	C	DC-BCKS-10-NMB-FR172-FR022	C115366-2640A
	D	DD-BCKS-10-NMB-FR172-FR022	C115366-2641A
	F	DF-BCKS-10-NMB-FR172-FR022	C115366-2695A

Dimensions shown in: mm
Specifications and dimensions subject to change

D-Sub Lightweight Backshell Closed - Shorting Can

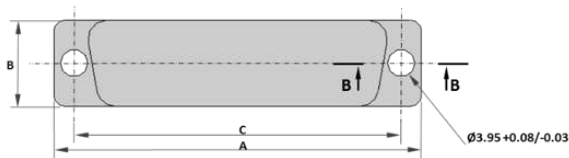


DIMENSIONS & WEIGHT

		Value			Weight (grams)
		A ±0.2	B ±0.15	C ±0.13	
Shell Size	E	30.68	12.50	24.99	8
	A	39.01	12.50	33.32	10
	B	52.91	12.50	47.04	14
	C	69.19	12.50	63.50	20
	D	66.80	15.30	61.11	26
	F	69.30	17.30	63.50	30



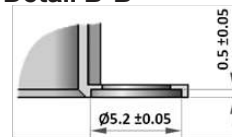
Configuration Sizes E-A-B-C-D



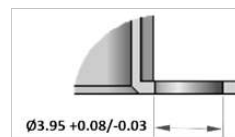
Configuration Size F



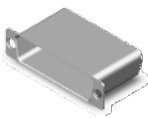
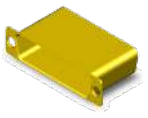
Detail B-B



Detail A-A



DESCRIPTION & PART NUMBERS

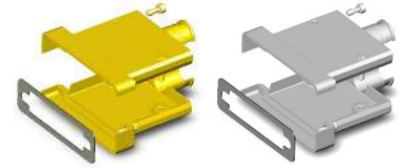
SHELL FINISH	SHELL SIZE	ESA/ESCC DESCRIPTION	C&K PART NUMBER
 Electroless Nickel	E	DE-BCKS-02-NMB-A174-FR022	C115366-2591B
	A	DA-BCKS-02-NMB-A174-FR022	C115366-2592B
	B	DB-BCKS-02-NMB-A174-FR022	C115366-2593B
	C	DC-BCKS-02-NMB-A174-FR022	C115366-2594B
	D	DD-BCKS-02-NMB-A174-FR022	C115366-2595B
	F	DF-BCKS-02-NMB-A174-FR022	C115366-2688B
 Gold	E	DE-BCKS-02-NMB-FR172-FR022	C115366-2591A
	A	DA-BCKS-02-NMB-FR172-FR022	C115366-2592A
	B	DB-BCKS-02-NMB-FR172-FR022	C115366-2593A
	C	DC-BCKS-02-NMB-FR172-FR022	C115366-2594A
	D	DD-BCKS-02-NMB-FR172-FR022	C115366-2595A
	F	DF-BCKS-02-NMB-FR172-FR022	C115366-2688A



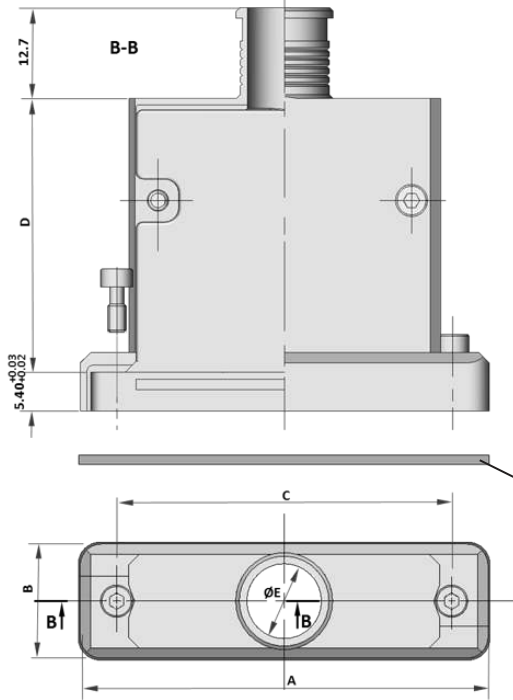
Dimensions shown in: mm
Specifications and dimensions subject to change

EMI BACKSHELL LIGHTWEIGHT

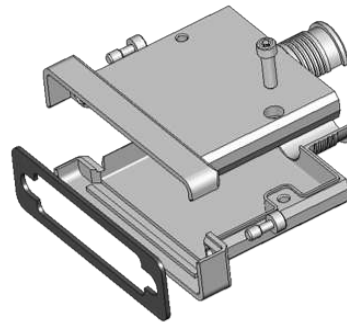
D-Sub Lightweight Backshell
Top Cylindrical Outlet - EMI Application
Rear Mounting



DIMENSIONS & WEIGHT



		Value					Weight (grams)
		A ±0.25	B ±0.25	C ±0.13	D ±0.30	E ±0.25	
Shell Size	E	35.03	15.98	24.99	32.70	6.73	21
	A	43.36	15.98	33.32	32.70	9.90	26
	B	57.25	15.98	47.04	38.30	10.54	30
	C	73.53	15.98	63.50	38.30	10.54	35
	D	71.14	18.75	61.11	38.30	13.33	40
	F	73.50	20.80	63.50	38.30	15.40	45



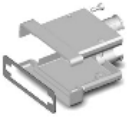

EMI Gaskets (3x):

- 1.40±0.1mm - to use with panel thickness within 0.77mm and 1.16mm
- 1.00±0.1mm - to use with panel thickness within 1.16mm and 1.55mm
- 0.60±0.1mm - to use with panel thickness within 1.55mm and 1.98mm

Backshell delivered with:

- 3 EMI gaskets to use according to panel thickness
- 2 Jackscrews 4-40 NC 2A Hexagonal Hole Head
- 2 screwlocks to fix the shells

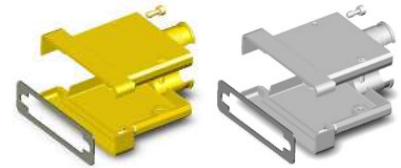
DESCRIPTION & PART NUMBERS

SHELL FINISH	SHELL SIZE	ESA/ESCC DESCRIPTION	C&K PART NUMBER
 Electroless Nickel	E	DE-BCKS-04-NMB-A174-FR022	C115366-2601B
	A	DA-BCKS-04-NMB-A174-FR022	C115366-2602B
	B	DB-BCKS-04-NMB-A174-FR022	C115366-2603B
	C	DC-BCKS-04-NMB-A174-FR022	C115366-2604B
	D	DD-BCKS-04-NMB-A174-FR022	C115366-2605B
	F	DF-BCKS-04-NMB-A174-FR022	C115366-2690B
 Gold	E	DE-BCKS-04-NMB-FR172-FR022	C115366-2601A
	A	DA-BCKS-04-NMB-FR172-FR022	C115366-2602A
	B	DB-BCKS-04-NMB-FR172-FR022	C115366-2603A
	C	DC-BCKS-04-NMB-FR172-FR022	C115366-2604A
	D	DD-BCKS-04-NMB-FR172-FR022	C115366-2605A
	F	DF-BCKS-04-NMB-FR172-FR022	C115366-2690A

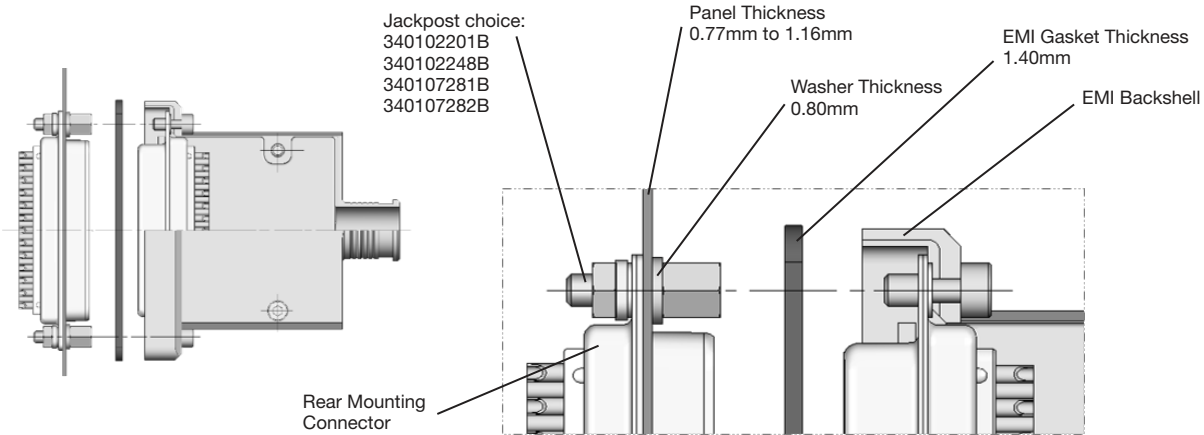


Dimensions shown in: mm
 Specifications and dimensions subject to change

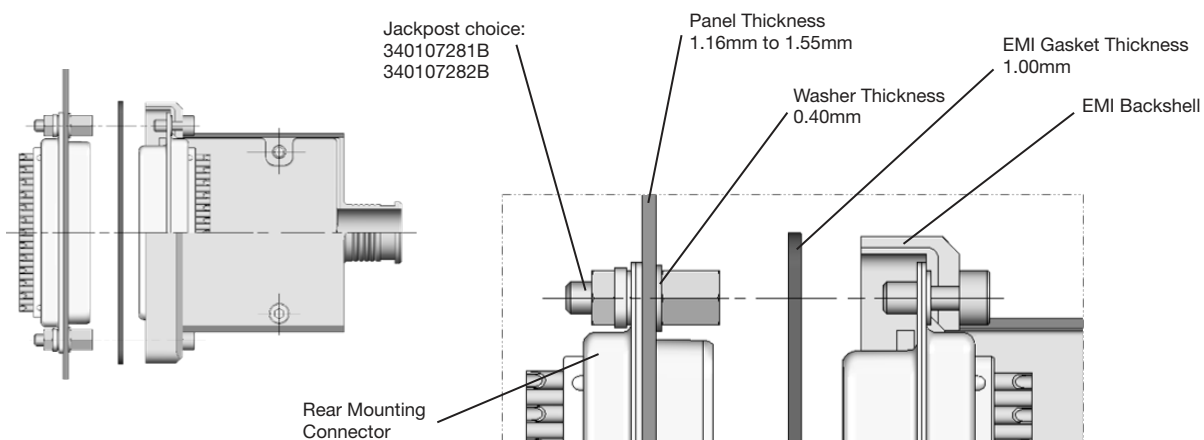
**D-Sub Lightweight Backshell
Top Cylindrical Outlet - EMI Application
Rear Mounting**



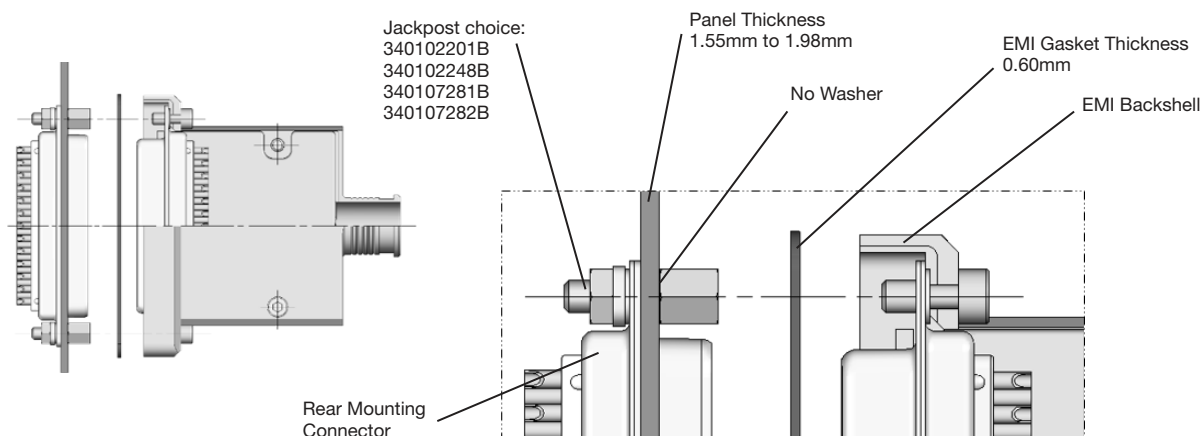
MOUNTING RECOMMENDATION - Panel Thickness within 0.77mm and 1.16mm



MOUNTING RECOMMENDATION - Panel Thickness within 1.16mm and 1.55mm

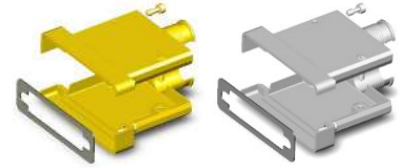


MOUNTING RECOMMENDATION - Panel Thickness within 1.55mm and 1.98mm

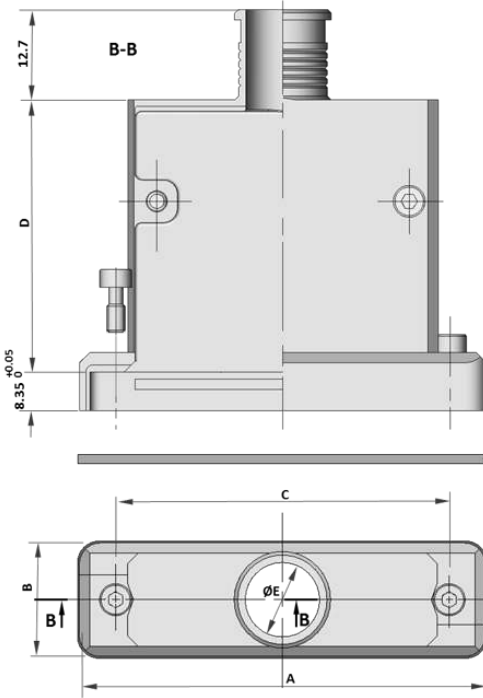


Dimensions shown in: mm
Specifications and dimensions subject to change

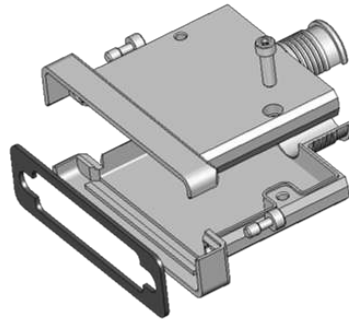
**D-Sub Lightweight Backshell
Top Cylindrical Outlet - EMI Application
Front Mounting**



DIMENSIONS & WEIGHT



		Value					Weight (grams)
		A ±0.25	B ±0.25	C ±0.13	D ±0.30	E ±0.25	
Shell Size	E	35.03	15.98	24.99	32.70	6.73	21
	A	43.36	15.98	33.32	32.70	9.90	26
	B	57.25	15.98	47.04	38.30	10.54	30
	C	73.53	15.98	63.50	38.30	10.54	35
	D	71.14	18.75	61.11	38.30	13.33	40
	F	73.50	20.80	63.50	38.30	15.40	45

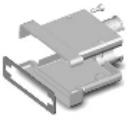



EMI Gaskets:
0.60±0.1mm thickness

Backshell delivered with:

- 1 EMI gasket
- 2 Jackscrews 4-40 NC 2A Hexagonal Hole Head
- 2 screwlocks to fix the shells

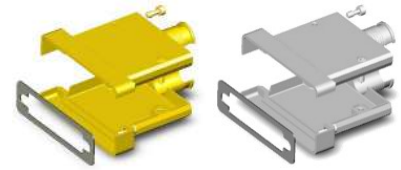
DESCRIPTION & PART NUMBERS

SHELL FINISH	SHELL SIZE	ESA/ESCC DESCRIPTION	C&K PART NUMBER
 Electroless Nickel	E	DE-BCKS-03-NMB-A174-FR022	C115366-2596B
	A	DA-BCKS-03-NMB-A174-FR022	C115366-2597B
	B	DB-BCKS-03-NMB-A174-FR022	C115366-2598B
	C	DC-BCKS-03-NMB-A174-FR022	C115366-2599B
	D	DD-BCKS-03-NMB-A174-FR022	C115366-2600B
	F	DF-BCKS-03-NMB-A174-FR022	C115366-2689B
 Gold	E	DE-BCKS-03-NMB-FR172-FR022	C115366-2596A
	A	DA-BCKS-03-NMB-FR172-FR022	C115366-2597A
	B	DB-BCKS-03-NMB-FR172-FR022	C115366-2598A
	C	DC-BCKS-03-NMB-FR172-FR022	C115366-2599A
	D	DD-BCKS-03-NMB-FR172-FR022	C115366-2600A
	F	DF-BCKS-03-NMB-FR172-FR022	C115366-2689A

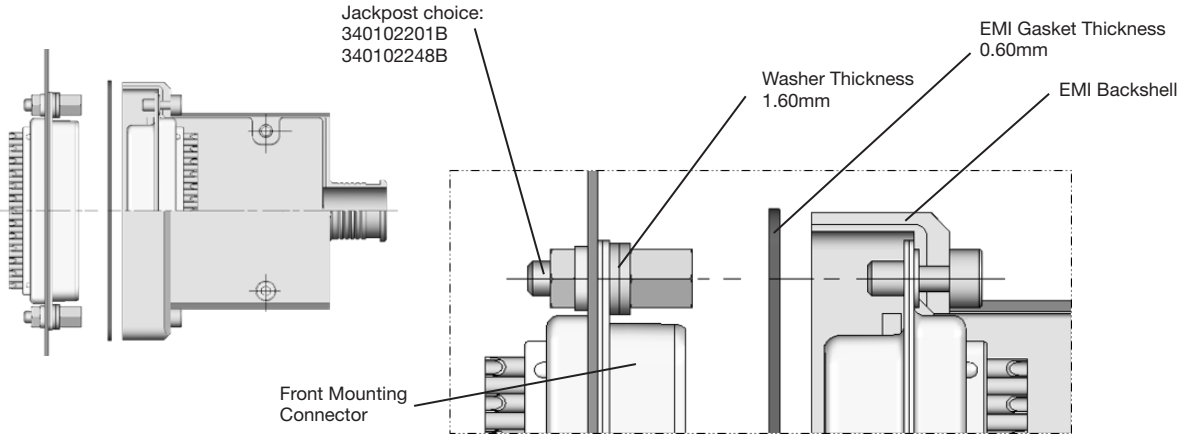


Dimensions shown in: mm
Specifications and dimensions subject to change

**D-Sub Lightweight Backshell
Top Cylindrical Outlet - EMI Application
Front Mounting**



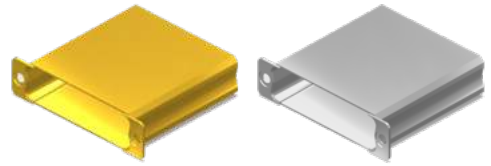
MOUNTING RECOMMENDATION



*Dimensions shown in: mm
Specifications and dimensions subject to change*

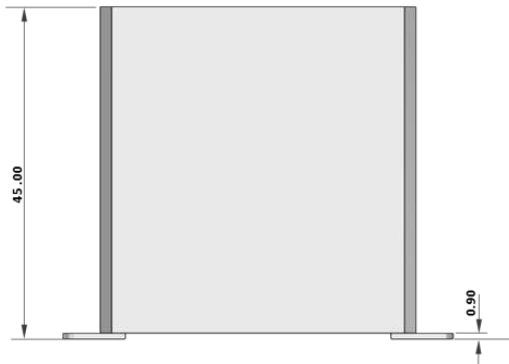
**BACKSHELL LIGHTWEIGHT
HALORING COMPATIBLE
+
HALORING**

D-Sub Lightweight Backshell
Haloring Compatible
Closed - Shorting Can

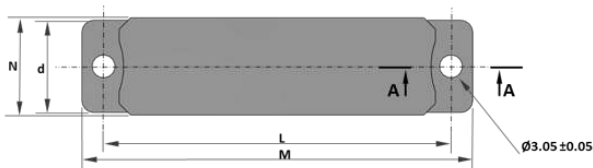
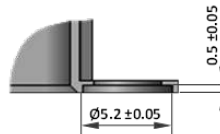


DIMENSIONS & WEIGHT

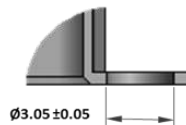
		Value				Weight (grams)
		M ±0.38	N ±0.2	d ±0.2	L ±0.13	
Shell Size	E	30.56	13.26	12.55	24.99	10.7
	A	38.89	13.26	12.55	33.32	13.5
	B	52.78	13.26	12.55	47.04	18
	C	69.04	13.26	12.55	63.50	23.6
	D	66.67	15.36	15.35	61.11	24.6
	F	69.32	18.06	17.35	63.50	26.2



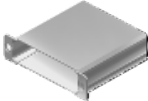
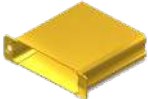
Detail A-A Sizes E, A B, C and D



Detail A-A Size F



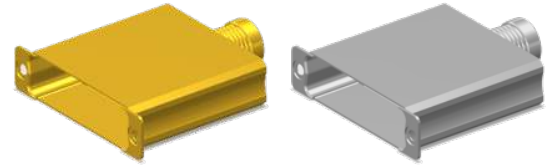
DESCRIPTION & PART NUMBERS

SHELL FINISH	SHELL SIZE	ESA/ESCC DESCRIPTION	C&K PART NUMBER
 Electroless Nickel	E	DE-BCKS-HAL-01-NMB-A174-FR022	C115366-2932B
	A	DA-BCKS-HAL-01-NMB-A174-FR022	C115366-2933B
	B	DB-BCKS-HAL-01-NMB-A174-FR022	C115366-2934B
	C	DC-BCKS-HAL-01-NMB-A174-FR022	C115366-2935B
	D	DD-BCKS-HAL-01-NMB-A174-FR022	C115366-2936B
	F	DF-BCKS-HAL-01-NMB-A174-FR022	C115366-2937B
 Gold	E	DE-BCKS-HAL-01-NMB-FR172-FR022	C115366-2932A
	A	DA-BCKS-HAL-01-NMB-FR172-FR022	C115366-2933A
	B	DB-BCKS-HAL-01-NMB-FR172-FR022	C115366-2934A
	C	DC-BCKS-HAL-01-NMB-FR172-FR022	C115366-2935A
	D	DD-BCKS-HAL-01-NMB-FR172-FR022	C115366-2936A
	F	DF-BCKS-HAL-01-NMB-FR172-FR022	C115366-2937A

Dimensions shown in: mm
 Specifications and dimensions subject to change

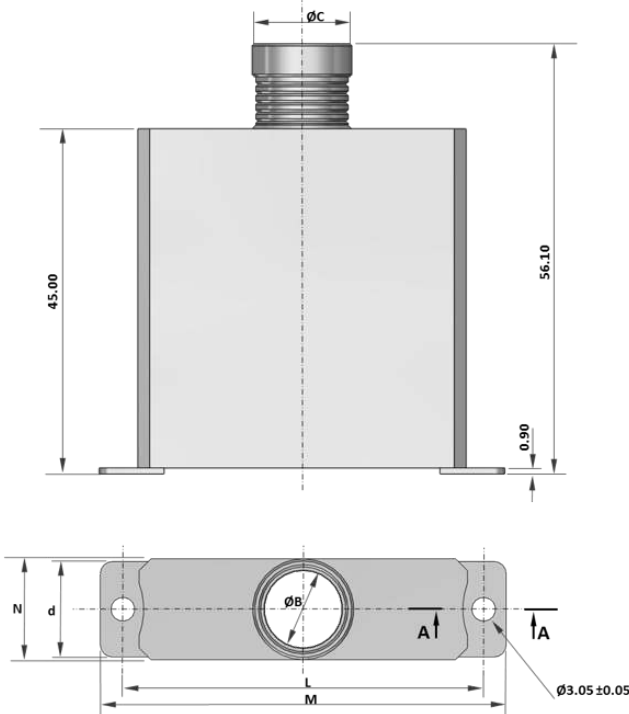


D-Sub Lightweight Backshell
Haloring Compatible
Top Circular Outlet

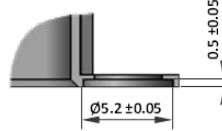


DIMENSIONS & WEIGHT

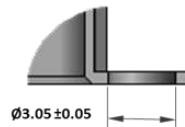
		Value						Weight (grams)
		M ±0.38	N ±0.2	d ±0.2	L ±0.13	ØB ±0.1	ØC ±0.1	
Shell Size	E	30.56	13.26	12.55	24.99	10.05	13.26	12
	A	38.89	13.26	12.55	33.32	10.05	13.26	14.8
	B	52.78	13.26	12.55	47.04	10.05	13.26	19.3
	C	69.04	13.26	12.55	63.50	10.05	13.26	24.9
	D	66.67	15.36	15.35	61.11	12.85	15.36	26.1
	F	69.32	18.06	17.35	63.50	14.85	18.06	27.8



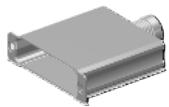
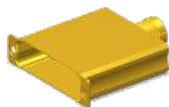
Detail A-A Sizes E, A B, C and D



Detail A-A Size F



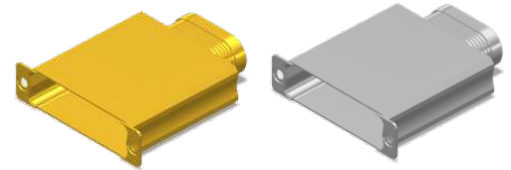
DESCRIPTION & PART NUMBERS

SHELL FINISH	SHELL SIZE	ESA/ESCC DESCRIPTION	C&K PART NUMBER
 Electroless Nickel	E	DE-BCKS-HAL-02-NMB-A174-FR022	C115366-2938B
	A	DA-BCKS-HAL-02-NMB-A174-FR022	C115366-2939B
	B	DB-BCKS-HAL-02-NMB-A174-FR022	C115366-2940B
	C	DC-BCKS-HAL-02-NMB-A174-FR022	C115366-2941B
	D	DD-BCKS-HAL-02-NMB-A174-FR022	C115366-2942B
	F	DF-BCKS-HAL-02-NMB-A174-FR022	C115366-2943B
 Gold	E	DE-BCKS-HAL-02-NMB-FR172-FR022	C115366-2938A
	A	DA-BCKS-HAL-02-NMB-FR172-FR022	C115366-2939A
	B	DB-BCKS-HAL-02-NMB-FR172-FR022	C115366-2940A
	C	DC-BCKS-HAL-02-NMB-FR172-FR022	C115366-2941A
	D	DD-BCKS-HAL-02-NMB-FR172-FR022	C115366-2942A
	F	DF-BCKS-HAL-02-NMB-FR172-FR022	C115366-2943A



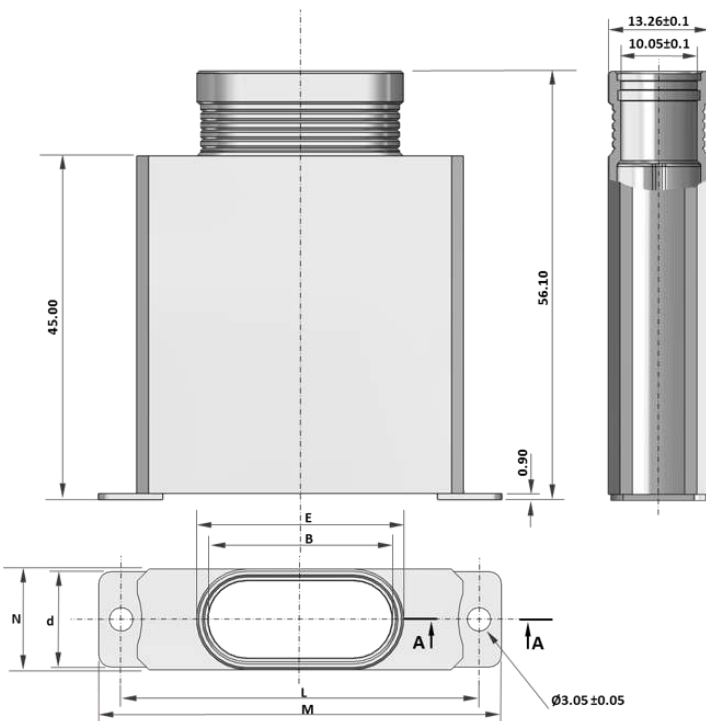
Dimensions shown in: mm
 Specifications and dimensions subject to change

D-Sub Lightweight Backshell
Haloring Compatible
Top Elliptical Outlet

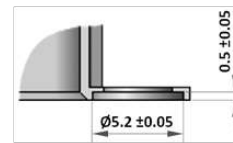


DIMENSIONS & WEIGHT

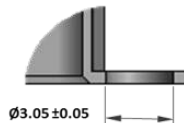
		Value						Weight (grams)
		M ±0.38	N ±0.2	d ±0.2	L ±0.13	B ±0.15	E ±0.15	
Shell Size	E	30.56	13.26	12.55	24.99	16.60	19.81	12.4
	A	38.89	13.26	12.55	33.32	24.10	27.31	15.5
	B	52.78	13.26	12.55	47.04	24.10	27.31	20
	C	69.04	13.26	12.55	63.50	24.10	27.31	25.6
	D	66.67	15.36	15.35	61.11	34.10	37.31	27
	F	69.32	18.06	17.35	63.50	37.60	40.81	28.8



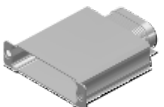
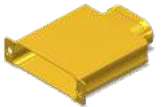
Detail A-A Sizes E, A B, C and D



Detail A-A Size F

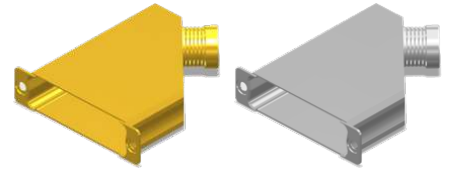


DESCRIPTION & PART NUMBERS

SHELL FINISH	SHELL SIZE	ESA/ESCC DESCRIPTION	C&K PART NUMBER
 Electroless Nickel	E	DE-BCKS-HAL-03-NMB-A174-FR022	C115366-2944B
	A	DA-BCKS-HAL-03-NMB-A174-FR022	C115366-2945B
	B	DB-BCKS-HAL-03-NMB-A174-FR022	C115366-2946B
	C	DC-BCKS-HAL-03-NMB-A174-FR022	C115366-2947B
	D	DD-BCKS-HAL-03-NMB-A174-FR022	C115366-2948B
	F	DF-BCKS-HAL-03-NMB-A174-FR022	C115366-2949B
 Gold	E	DE-BCKS-HAL-03-NMB-FR172-FR022	C115366-2944A
	A	DA-BCKS-HAL-03-NMB-FR172-FR022	C115366-2945A
	B	DB-BCKS-HAL-03-NMB-FR172-FR022	C115366-2946A
	C	DC-BCKS-HAL-03-NMB-FR172-FR022	C115366-2947A
	D	DD-BCKS-HAL-03-NMB-FR172-FR022	C115366-2948A
	F	DF-BCKS-HAL-03-NMB-FR172-FR022	C115366-2949A

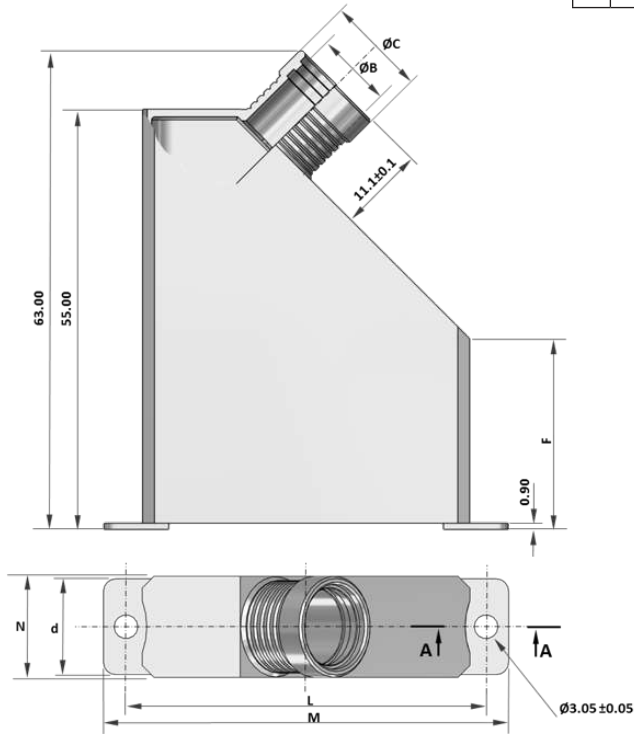
Dimensions shown in: mm
 Specifications and dimensions subject to change

D-Sub Lightweight Backshell
Haloring Compatible
45° Circular Outlet

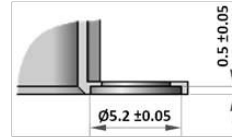


DIMENSIONS & WEIGHT

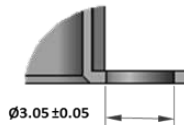
		Value							Weight (grams)
		M ±0.38	N ±0.2	d ±0.2	L ±0.13	ØB ±0.1	ØC ±0.1	F ±0.2	
Shell Size	E	30.56	13.26	12.55	24.99	10.05	13.26	40	13.3
	A	38.89	13.26	12.55	33.32	10.05	13.26	35	15.9
	B	52.78	13.26	12.55	47.04	10.05	13.26	25	19.2
	C	69.04	13.26	12.55	63.50	10.05	13.26	20	24.7
	D	66.67	15.36	15.35	61.11	12.85	15.36	20	25.7
	F	69.32	18.06	17.35	63.50	14.85	18.06	20	27.7



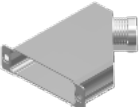

Detail A-A Sizes E, A B, C and D



Detail A-A Size F



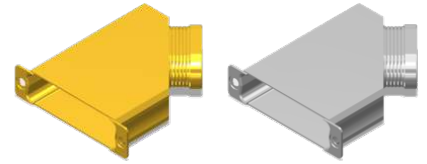
DESCRIPTION & PART NUMBERS

SHELL FINISH	SHELL SIZE	ESA/ESCC DESCRIPTION	C&K PART NUMBER
 Electroless Nickel	E	DE-BCKS-HAL-04-NMB-A174-FR022	C115366-2950B
	A	DA-BCKS-HAL-04-NMB-A174-FR022	C115366-2951B
	B	DB-BCKS-HAL-04-NMB-A174-FR022	C115366-2952B
	C	DC-BCKS-HAL-04-NMB-A174-FR022	C115366-2953B
	D	DD-BCKS-HAL-04-NMB-A174-FR022	C115366-2954B
	F	DF-BCKS-HAL-04-NMB-A174-FR022	C115366-2955B
 Gold	E	DE-BCKS-HAL-04-NMB-FR172-FR022	C115366-2950A
	A	DA-BCKS-HAL-04-NMB-FR172-FR022	C115366-2951A
	B	DB-BCKS-HAL-04-NMB-FR172-FR022	C115366-2952A
	C	DC-BCKS-HAL-04-NMB-FR172-FR022	C115366-2953A
	D	DD-BCKS-HAL-04-NMB-FR172-FR022	C115366-2954A
	F	DF-BCKS-HAL-04-NMB-FR172-FR022	C115366-2955A



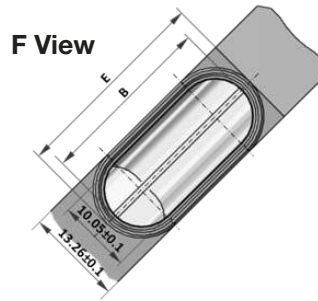
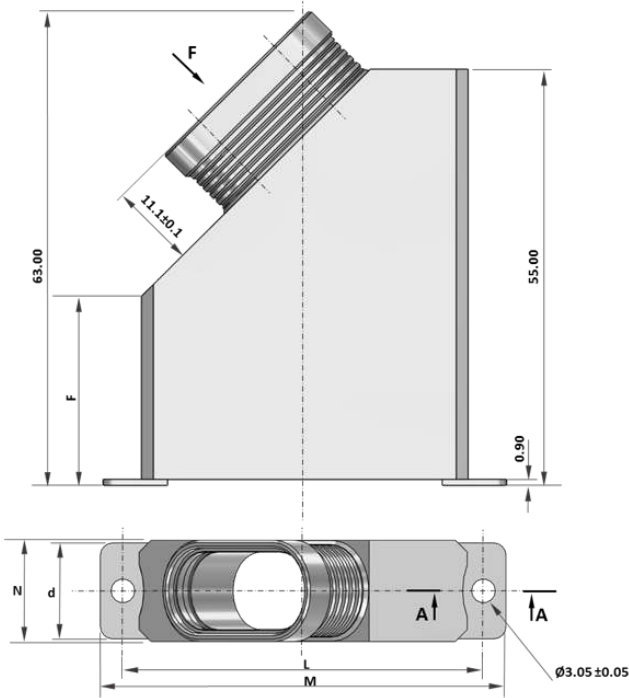
Dimensions shown in: mm
 Specifications and dimensions subject to change

D-Sub Lightweight Backshell
Haloring Compatible
45° Elliptical Outlet

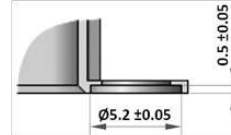


DIMENSIONS & WEIGHT

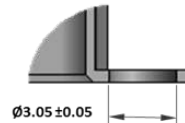
		Value							Weight (grams)
		M ±0.38	N ±0.2	d ±0.2	L ±0.13	B ±0.15	E ±0.15	F ±0.2	
Shell Size	E	30.56	13.26	12.55	24.99	16.60	19.81	40	13.6
	A	38.89	13.26	12.55	33.32	24.10	27.31	35	16.6
	B	52.78	13.26	12.55	47.04	24.10	27.31	25	19.9
	C	69.04	13.26	12.55	63.50	24.10	27.31	20	25.4
	D	66.67	15.36	15.35	61.11	34.10	37.31	20	26.7
	F	69.32	18.06	17.35	63.50	37.60	40.81	20	28.7



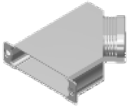
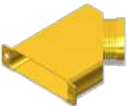
Detail A-A Sizes E, A B, C and D



Detail A-A Size F

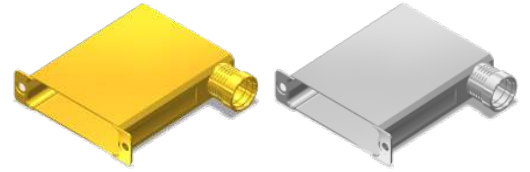


DESCRIPTION & PART NUMBERS

SHELL FINISH	SHELL SIZE	ESA/ESCC DESCRIPTION	C&K PART NUMBER
 Electroless Nickel	E	DE-BCKS-HAL-05-NMB-A174-FR022	C115366-2956B
	A	DA-BCKS-HAL-05-NMB-A174-FR022	C115366-2957B
	B	DB-BCKS-HAL-05-NMB-A174-FR022	C115366-2958B
	C	DC-BCKS-HAL-05-NMB-A174-FR022	C115366-2959B
	D	DD-BCKS-HAL-05-NMB-A174-FR022	C115366-2960B
	F	DF-BCKS-HAL-05-NMB-A174-FR022	C115366-2961B
 Gold	E	DE-BCKS-HAL-05-NMB-FR172-FR022	C115366-2956A
	A	DA-BCKS-HAL-05-NMB-FR172-FR022	C115366-2957A
	B	DB-BCKS-HAL-05-NMB-FR172-FR022	C115366-2958A
	C	DC-BCKS-HAL-05-NMB-FR172-FR022	C115366-2959A
	D	DD-BCKS-HAL-05-NMB-FR172-FR022	C115366-2960A
	F	DF-BCKS-HAL-05-NMB-FR172-FR022	C115366-2961A

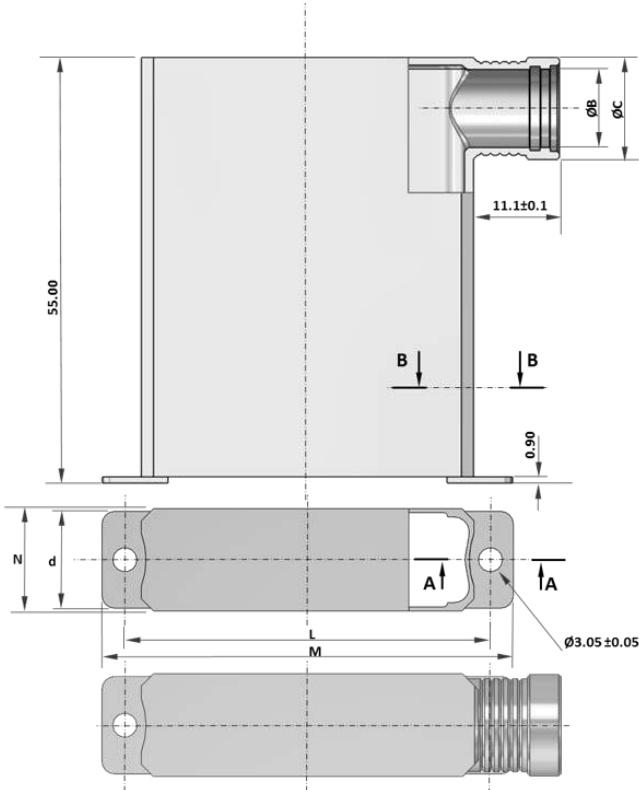
Dimensions shown in: mm
 Specifications and dimensions subject to change

D-Sub Lightweight Backshell
Haloring Compatible
90° Cylindrical Outlet

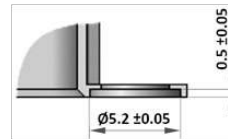


DIMENSIONS & WEIGHT

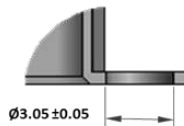
		Value						Weight (grams)
		M ±0.38	N ±0.2	d ±0.2	L ±0.13	ØB ±0.1	ØC ±0.1	
Shell Size	E	30.56	13.26	12.55	24.99	10.05	13.26	14.7
	A	38.89	13.26	12.55	33.32	10.05	13.26	18.1
	B	52.78	13.26	12.55	47.04	10.05	13.26	23.6
	C	69.04	13.26	12.55	63.50	10.05	13.26	30.5
	D	66.67	15.36	15.35	61.11	12.85	15.36	31.7
	F	69.32	18.06	17.35	63.50	14.85	18.06	33.8



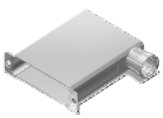
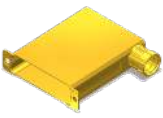
Detail A-A Sizes E, A B, C and D



Detail A-A Size F



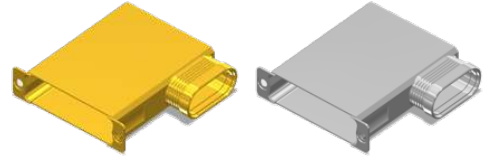
DESCRIPTION & PART NUMBERS

SHELL FINISH	SHELL SIZE	ESA/ESCC DESCRIPTION	C&K PART NUMBER
 Electroless Nickel	E	DE-BCKS-HAL-06-NMB-A174-FR022	C115366-2962B
	A	DA-BCKS-HAL-06-NMB-A174-FR022	C115366-2963B
	B	DB-BCKS-HAL-06-NMB-A174-FR022	C115366-2964B
	C	DC-BCKS-HAL-06-NMB-A174-FR022	C115366-2965B
	D	DD-BCKS-HAL-06-NMB-A174-FR022	C115366-2966B
	F	DF-BCKS-HAL-06-NMB-A174-FR022	C115366-2967B
 Gold	E	DE-BCKS-HAL-06-NMB-FR172-FR022	C115366-2962A
	A	DA-BCKS-HAL-06-NMB-FR172-FR022	C115366-2963A
	B	DB-BCKS-HAL-06-NMB-FR172-FR022	C115366-2964A
	C	DC-BCKS-HAL-06-NMB-FR172-FR022	C115366-2965A
	D	DD-BCKS-HAL-06-NMB-FR172-FR022	C115366-2966A
	F	DF-BCKS-HAL-06-NMB-FR172-FR022	C115366-2967A



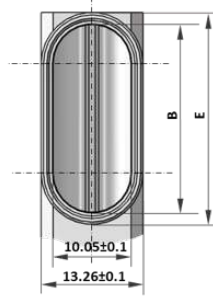
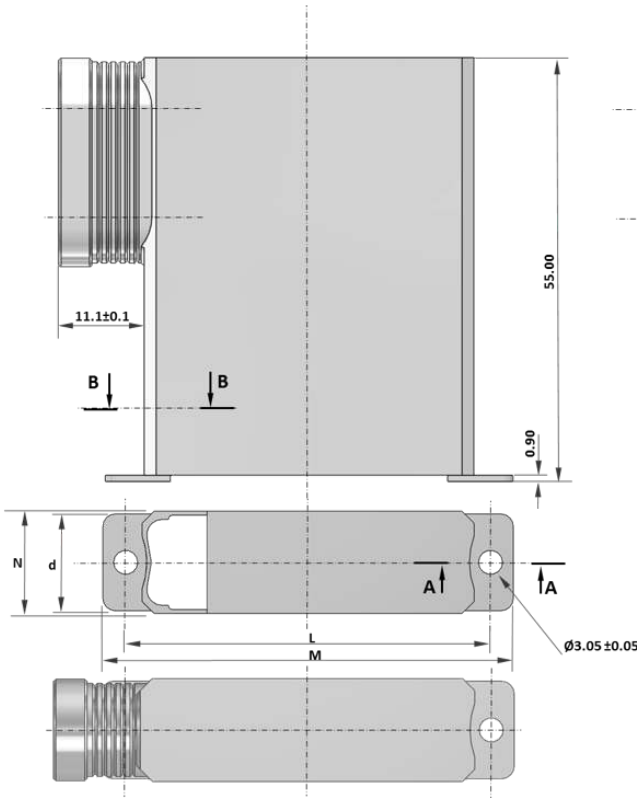
Dimensions shown in: mm
 Specifications and dimensions subject to change

D-Sub Lightweight Backshell
Haloring Compatible
90° Elliptical Outlet

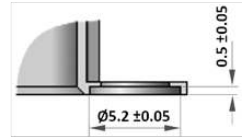


DIMENSIONS & WEIGHT

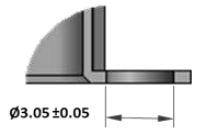
		Value						
		M ±0.38	N ±0.2	d ±0.2	L ±0.13	B ±0.15	E ±0.15	Weight (grams)
Shell Size	E	30.56	13.26	12.55	24.99	16.60	19.81	13.6
	A	38.89	13.26	12.55	33.32	24.10	27.31	16.6
	B	52.78	13.26	12.55	47.04	24.10	27.31	19.9
	C	69.04	13.26	12.55	63.50	24.10	27.31	25.4
	D	66.67	15.36	15.35	61.11	34.10	37.31	26.7
	F	69.32	18.06	17.35	63.50	37.60	40.81	28.7



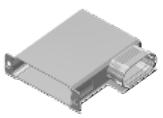

Detail A-A Sizes E, A B, C and D



Detail A-A Size F



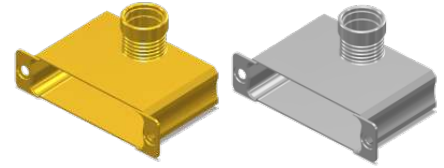
DESCRIPTION & PART NUMBERS

SHELL FINISH	SHELL SIZE	ESA/ESCC DESCRIPTION	C&K PART NUMBER
 Electroless Nickel	E	DE-BCKS-HAL-07-NMB-A174-FR022	C115366-2968B
	A	DA-BCKS-HAL-07-NMB-A174-FR022	C115366-2969B
	B	DB-BCKS-HAL-07-NMB-A174-FR022	C115366-2970B
	C	DC-BCKS-HAL-07-NMB-A174-FR022	C115366-2971B
	D	DD-BCKS-HAL-07-NMB-A174-FR022	C115366-2972B
	F	DF-BCKS-HAL-07-NMB-A174-FR022	C115366-2973B
 Gold	E	DE-BCKS-HAL-07-NMB-FR172-FR022	C115366-2968A
	A	DA-BCKS-HAL-07-NMB-FR172-FR022	C115366-2969A
	B	DB-BCKS-HAL-07-NMB-FR172-FR022	C115366-2970A
	C	DC-BCKS-HAL-07-NMB-FR172-FR022	C115366-2971A
	D	DD-BCKS-HAL-07-NMB-FR172-FR022	C115366-2972A
	F	DF-BCKS-HAL-07-NMB-FR172-FR022	C115366-2973A

Dimensions shown in: mm
 Specifications and dimensions subject to change

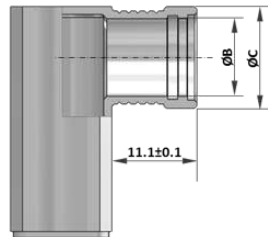
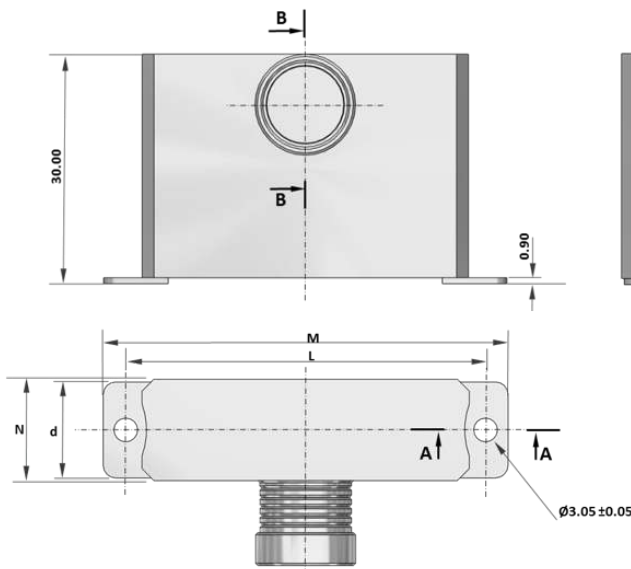


D-Sub Lightweight Backshell
Haloring Compatible
90° Top Circular Outlet

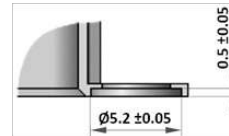


DIMENSIONS & WEIGHT

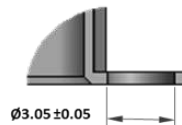
		Value						Weight (grams)
		M ±0.38	N ±0.2	d ±0.2	L ±0.13	ØB ±0.1	ØC ±0.1	
Shell Size	E	30.56	13.26	12.55	24.99	10.05	13.26	8.2
	A	38.89	13.26	12.55	33.32	10.05	13.26	10
	B	52.78	13.26	12.55	47.04	10.05	13.26	12.9
	C	69.04	13.26	12.55	63.50	10.05	13.26	16.6
	D	66.67	15.36	15.35	61.11	12.85	15.36	17.6
	F	69.32	18.06	17.35	63.50	14.85	18.06	18.9



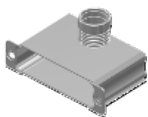
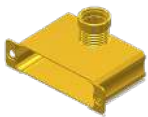
Detail A-A Sizes E, A B, C and D



Detail A-A Size F



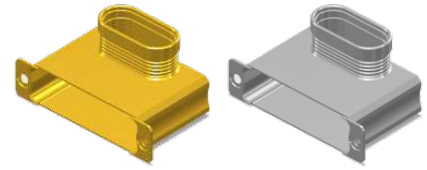
DESCRIPTION & PART NUMBERS

SHELL FINISH	SHELL SIZE	ESA/ESCC DESCRIPTION	C&K PART NUMBER
 Electroless Nickel	E	DE-BCKS-HAL-08-NMB-A174-FR022	C115366-2974B
	A	DA-BCKS-HAL-08-NMB-A174-FR022	C115366-2975B
	B	DB-BCKS-HAL-08-NMB-A174-FR022	C115366-2976B
	C	DC-BCKS-HAL-08-NMB-A174-FR022	C115366-2977B
	D	DD-BCKS-HAL-08-NMB-A174-FR022	C115366-2978B
	F	DF-BCKS-HAL-08-NMB-A174-FR022	C115366-2979B
 Gold	E	DE-BCKS-HAL-08-NMB-FR172-FR022	C115366-2974A
	A	DA-BCKS-HAL-08-NMB-FR172-FR022	C115366-2975A
	B	DB-BCKS-HAL-08-NMB-FR172-FR022	C115366-2976A
	C	DC-BCKS-HAL-08-NMB-FR172-FR022	C115366-2977A
	D	DD-BCKS-HAL-08-NMB-FR172-FR022	C115366-2978A
	F	DF-BCKS-HAL-08-NMB-FR172-FR022	C115366-2979A



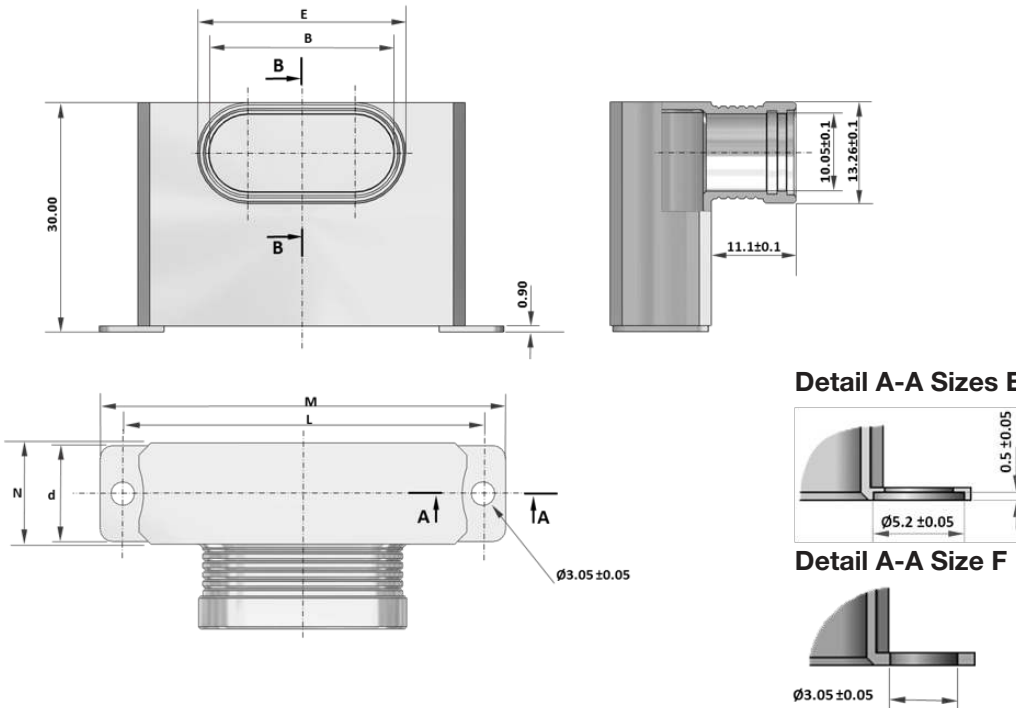
Dimensions shown in: mm
 Specifications and dimensions subject to change

D-Sub Lightweight Backshell
Haloring Compatible
90° Top Elliptical Outlet



DIMENSIONS & WEIGHT

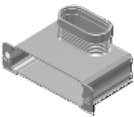

		Value						Weight (grams)
		M ±0.38	N ±0.2	d ±0.2	L ±0.13	B ±0.15	E ±0.15	
Shell Size	E	30.56	13.26	12.55	24.99	11.85	15.06	8.3
	A	38.89	13.26	12.55	33.32	16.60	19.81	10.3
	B	52.78	13.26	12.55	47.04	24.10	27.31	13.6
	C	69.04	13.26	12.55	63.50	24.10	27.31	17.3
	D	66.67	15.36	15.35	61.11	34.10	37.31	18.6
	F	69.32	18.06	17.35	63.50	34.10	37.31	20



Detail A-A Sizes E, A, B, C and D

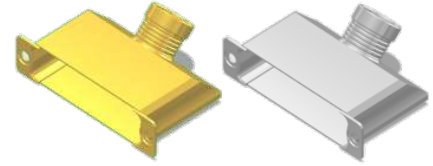
Detail A-A Size F

DESCRIPTION & PART NUMBERS

SHELL FINISH	SHELL SIZE	ESA/ESCC DESCRIPTION	C&K PART NUMBER
 Electroless Nickel	E	DE-BCKS-HAL-09-NMB-A174-FR022	C115366-2980B
	A	DA-BCKS-HAL-09-NMB-A174-FR022	C115366-2981B
	B	DB-BCKS-HAL-09-NMB-A174-FR022	C115366-2982B
	C	DC-BCKS-HAL-09-NMB-A174-FR022	C115366-2983B
	D	DD-BCKS-HAL-09-NMB-A174-FR022	C115366-2984B
	F	DF-BCKS-HAL-09-NMB-A174-FR022	C115366-2985B
 Gold	E	DE-BCKS-HAL-09-NMB-FR172-FR022	C115366-2980A
	A	DA-BCKS-HAL-09-NMB-FR172-FR022	C115366-2981A
	B	DB-BCKS-HAL-09-NMB-FR172-FR022	C115366-2982A
	C	DC-BCKS-HAL-09-NMB-FR172-FR022	C115366-2983A
	D	DD-BCKS-HAL-09-NMB-FR172-FR022	C115366-2984A
	F	DF-BCKS-HAL-09-NMB-FR172-FR022	C115366-2985A

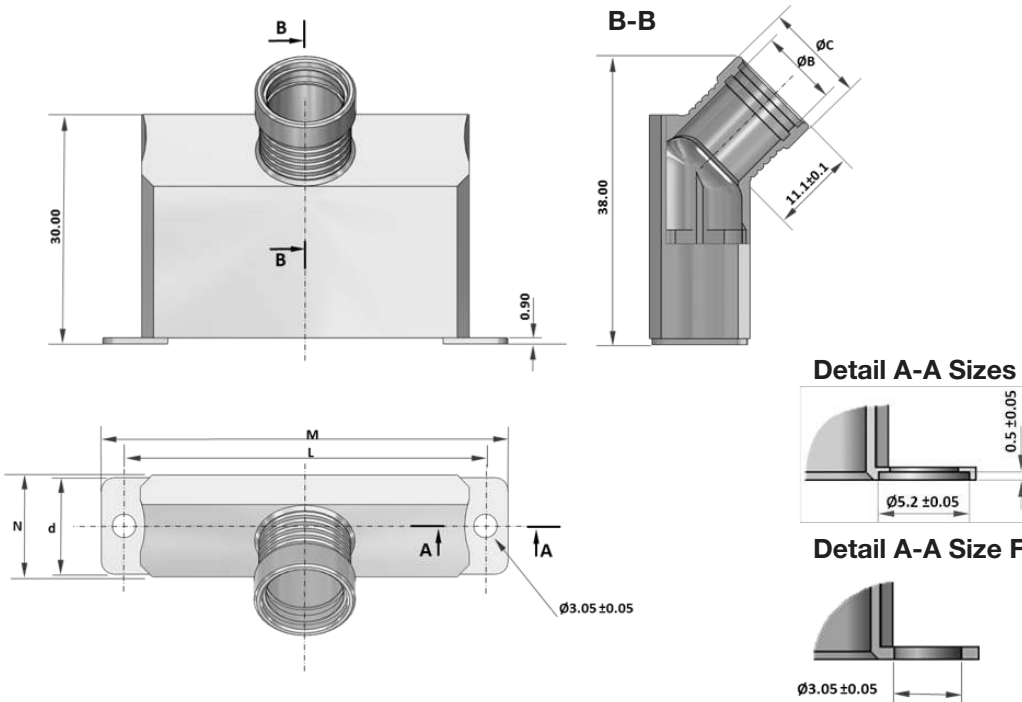
Dimensions shown in: mm
 Specifications and dimensions subject to change

D-Sub Lightweight Backshell
Haloring Compatible
45° Top Circular Outlet

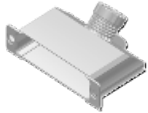
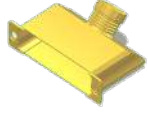


DIMENSIONS & WEIGHT

		Value						Weight (grams)
		M ±0.38	N ±0.2	d ±0.2	L ±0.13	ØB ±0.1	ØC ±0.1	
Shell Size	E	30.56	13.26	12.55	24.99	10.05	13.26	8
	A	38.89	13.26	12.55	33.32	10.05	13.26	9.9
	B	52.78	13.26	12.55	47.04	10.05	13.26	12.9
	C	69.04	13.26	12.55	63.50	10.05	13.26	16.8
	D	66.67	15.36	15.35	61.11	12.85	15.36	16.2
	F	69.32	18.06	17.35	63.50	14.85	18.06	17.6



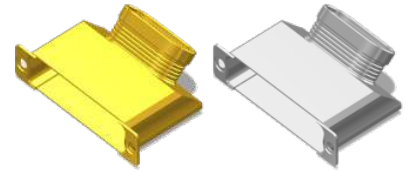
DESCRIPTION & PART NUMBERS

SHELL FINISH	SHELL SIZE	ESA/ESCC DESCRIPTION	C&K PART NUMBER
 Electroless Nickel	E	DE-BCKS-HAL-10-NMB-A174-FR022	C115366-2986B
	A	DA-BCKS-HAL-10-NMB-A174-FR022	C115366-2987B
	B	DB-BCKS-HAL-10-NMB-A174-FR022	C115366-2988B
	C	DC-BCKS-HAL-10-NMB-A174-FR022	C115366-2989B
	D	DD-BCKS-HAL-10-NMB-A174-FR022	C115366-2990B
	F	DF-BCKS-HAL-10-NMB-A174-FR022	C115366-2991B
 Gold	E	DE-BCKS-HAL-10-NMB-FR172-FR022	C115366-2986A
	A	DA-BCKS-HAL-10-NMB-FR172-FR022	C115366-2987A
	B	DB-BCKS-HAL-10-NMB-FR172-FR022	C115366-2988A
	C	DC-BCKS-HAL-10-NMB-FR172-FR022	C115366-2989A
	D	DD-BCKS-HAL-10-NMB-FR172-FR022	C115366-2990A
	F	DF-BCKS-HAL-10-NMB-FR172-FR022	C115366-2991A



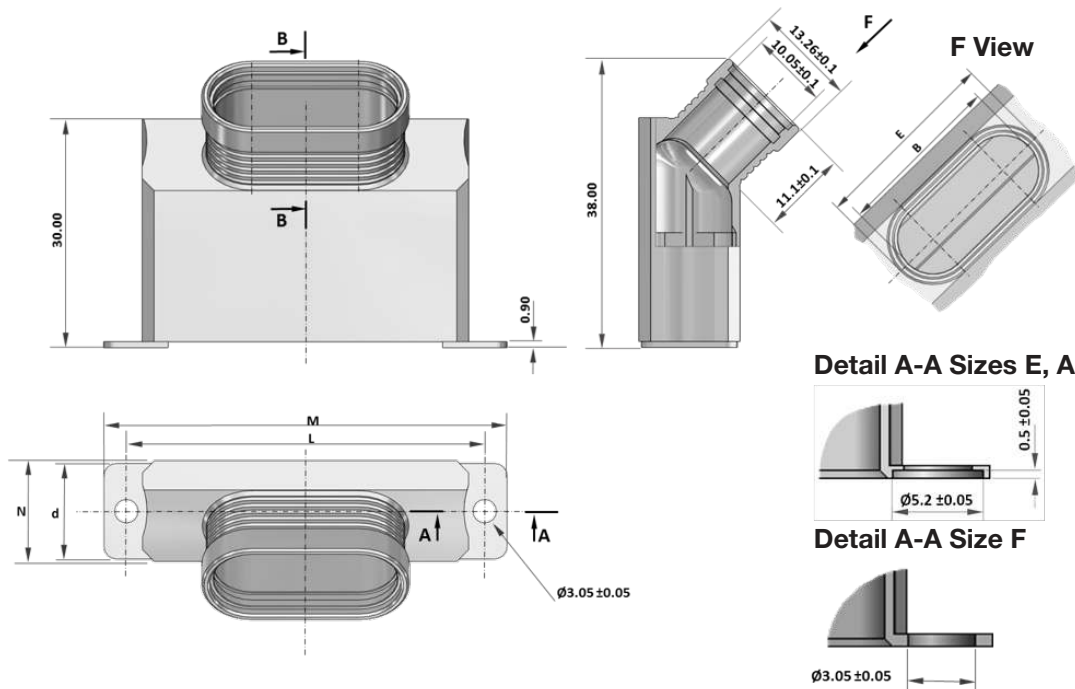
Dimensions shown in: mm
 Specifications and dimensions subject to change

D-Sub Lightweight Backshell
Haloring Compatible
45° Top Elliptical Outlet

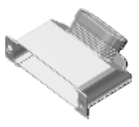
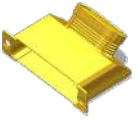


DIMENSIONS & WEIGHT

		Value						Weight (grams)
		M ±0.38	N ±0.2	d ±0.2	L ±0.13	B ±0.15	E ±0.15	
Shell Size	E	30.56	13.26	12.55	24.99	11.85	15.06	8.1
	A	38.89	13.26	12.55	33.32	16.60	19.81	10.2
	B	52.78	13.26	12.55	47.04	24.10	27.31	13.6
	C	69.04	13.26	12.55	63.50	24.10	27.31	17.4
	D	66.67	15.36	15.35	61.11	34.10	37.31	17.8
	F	69.32	18.06	17.35	63.50	34.10	37.31	18.7



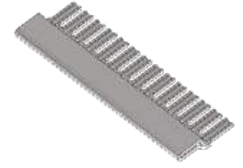
DESCRIPTION & PART NUMBERS

SHELL FINISH	SHELL SIZE	ESA/ESCC DESCRIPTION	C&K PART NUMBER
 Electroless Nickel	E	DE-BCKS-HAL-11-NMB-A174-FR022	C115366-2992B
	A	DA-BCKS-HAL-11-NMB-A174-FR022	C115366-2993B
	B	DB-BCKS-HAL-11-NMB-A174-FR022	C115366-2994B
	C	DC-BCKS-HAL-11-NMB-A174-FR022	C115366-2995B
	D	DD-BCKS-HAL-11-NMB-A174-FR022	C115366-2996B
	F	DF-BCKS-HAL-11-NMB-A174-FR022	C115366-2997B
 Gold	E	DE-BCKS-HAL-11-NMB-FR172-FR022	C115366-2992A
	A	DA-BCKS-HAL-11-NMB-FR172-FR022	C115366-2993A
	B	DB-BCKS-HAL-11-NMB-FR172-FR022	C115366-2994A
	C	DC-BCKS-HAL-11-NMB-FR172-FR022	C115366-2995A
	D	DD-BCKS-HAL-11-NMB-FR172-FR022	C115366-2996A
	F	DF-BCKS-HAL-11-NMB-FR172-FR022	C115366-2997A

Dimensions shown in: mm
 Specifications and dimensions subject to change



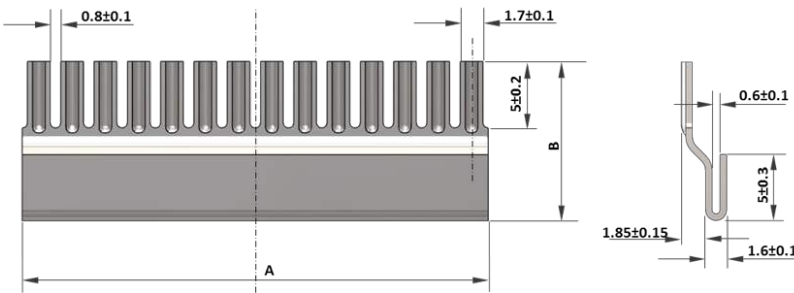
D-Sub Haloring Compatible 45° Top Elliptical Outlet



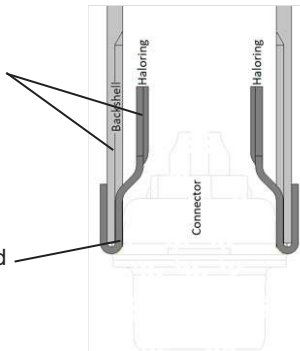
DIMENSIONS & WEIGHT



		A ±0.2	B ±0.3	Number of Tines	Weight (grams)
Shell Size	E	15.00	12.00	6	1.3
	A	22.50	12.00	9	1.9
	B	35.00	12.00	14	2.9
	C & D	47.50	12.00	19	4
	F	52.50	15.00	21	5.2



The internal shape of the backshell and the profile of the haloring have been specifically studied in order to overcome the space constraints and ensure ease of use during wiring of the shielded wires



Haloring is held between the connector and the backshell

Note: All our Backshells haloring compatible are designed to be used with 1 or 2 halorings on the 2 large sides.

DESCRIPTION & PART NUMBERS

	SHELL SIZE	ESA/ESCC DESCRIPTION	C&K PART NUMBER
	E	HALORING-DE-01-FR022	C115366-2927B
	A	HALORING-DA-01-FR022	C115366-2928B
	B	HALORING-DB-01-FR022	C115366-2929B
	C & D	HALORING-DC-DD-01-FR022	C115366-2930B
	F	HALORING-DF-01-FR022	C115366-2931B



*Dimensions shown in: mm
Specifications and dimensions subject to change*

ACCESSORIES

Universal Male Screwlock - Slotted Head	ESA/ESCC DESCRIPTION	C&K PART NUMBER
	D115440-0165-FR022	C115440-0165A
Universal Male Screwlock - Hexagonal Hole Head	ESA/ESCC DESCRIPTION	C&K PART NUMBER
	D115440-0167-FR022	C115440-0167A
Specific Female Screwlock for use with Backshell	ESA/ESCC DESCRIPTION	C&K PART NUMBER
	D115440-0201-FR022	C115440-0201

HDS FR022 D-Sub Lightweight Backshell - June 2020

Dimensions shown in: mm
Specifications and dimensions subject to change