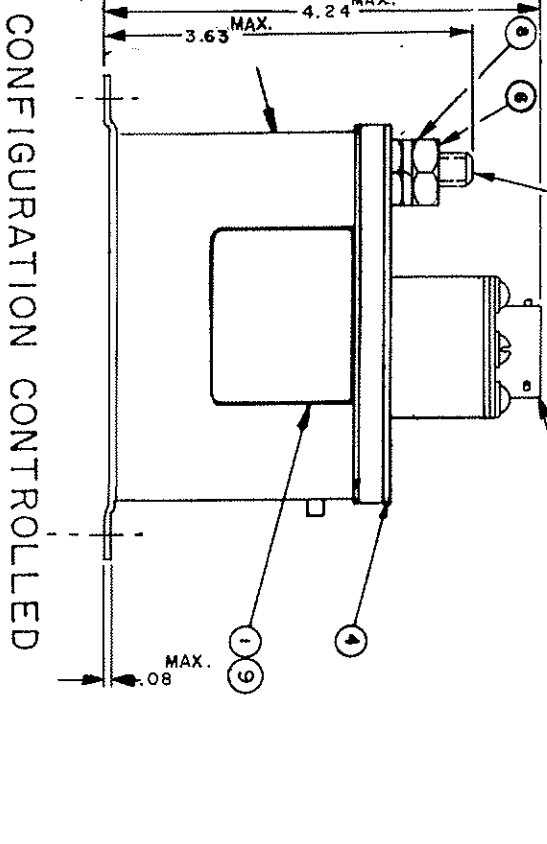
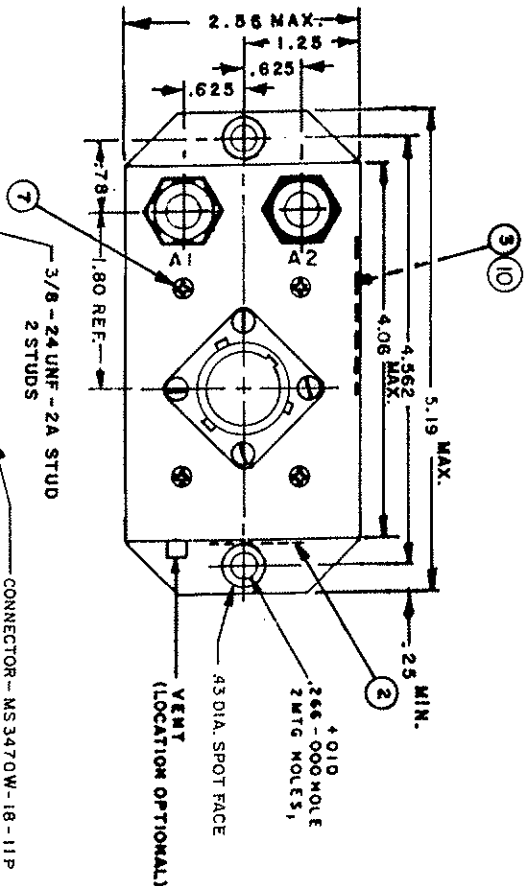
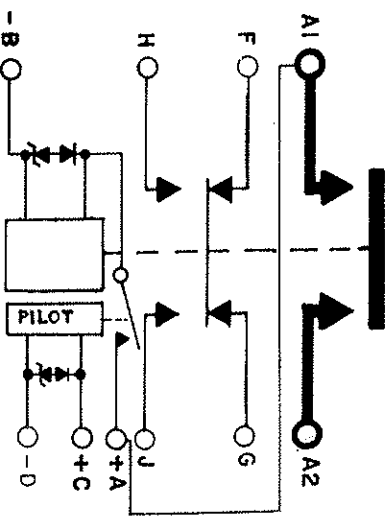


REVISIONS		DATE APPROVED
REV	DESCRIPTION	
A	ADDED ITEMS 9 & 10	10-14-91

DWG NO. A-703AK
MAY 1991



CONFIGURATION CONTROLLED



NOTES: 1. THIS UNIT MEETS THE MATERIALS & WORKMANSHIP REQUIREMENTS OF MIL - R - 6106
2. REMOVE FINISH FROM MTG. SURFACE

ITEM NO	QTY	PART OR IDENTIFYING NO	NOMENCLATURE OR DESCRIPTION	FSCM NO	DRAWING OR SPECIFICATION	MATERIAL OR NOTE
10	1	39529-038	OVERLAY			
9	1	39529-001	OVERLAY			
8	2	51807-084	WASHER-LOCK, 3/8x.686x.094 SP	MS35336-103		BRONZE
7	4	51200-020	SCREW-NO.4x1/4 SHEET METAL	MS24626-9		STAINLESS STEEL
6	2	50407-164	NUT, 3/8-24x5/8x7/32 HEX	MS35650-3385		BRASS
5	1	32687-100	CONTACTOR ASSEMBLY-PRI.			
4	1	32232-002	PLATE - BASE COVER			
3	1	42279-001	PLATE - WIRING DIAGRAM			
2	1	25695-001	PLATE - WARNING			
1	1	16045-001	PLATE - NAME			

UNLESS OTHERWISE SPECIFIED DIMENSIONS ARE IN INCHES
TOLERANCES UN
2 PLAC. 1 3 PLAC. ANGLES
±.06 ±.010 ± 1°

REF. MDC 500046-1
HARTMAN ELECTRICAL MANUFACTURING
MANSFIELD, OHIO
CONTACTOR
400 AMP, 28 VOLTS
SIZE C FSCM NO 74063 DWG NO A-703AK
SCALE: NONE SHEET 1 OF 2

REVISEMENTS	DATE	APPROVED

CONSTRUCTION
MAIN CONTACTS
VOLTAGE (NOMINAL)
CURRENT:

SPST N.O.
28 VDC
400 AMP
1000 AMP FOR 30 SEC.
1500 AMP INRUSH

AUXILIARY CONTACTS
CONFIGURATION
VOLTAGE
CURRENT RES.
SURGE

PILOT RELAY
CONTACT CONFIGURATION
VOLTAGE NOMINAL
CURRENT
COIL DUTY
COIL CURRENT AT 31V
PICKUP
DROPOUT
TRANSIENT SUPPRESSION

SPST
28 VDC
5 AMP
CONTINUOUS
.15 AMP MAX.
18V. MAX.
7V. MAX.
± 45 V

COIL DATA
DUTY CYCLE
NOMINAL VOLTAGE
PICKUP MAX.
PULL THROUGH
DROPOUT VOLTAGE

INTERMITTENT
16-31 VDC
10 VDC
6 VDC MAX. AT 77°F
7+0
7-6

RESISTANCE
TRANSIENT SUPPRESSION
OPERATE TIMES
PICKUP
DROPOUT
CONTACT BOUNCE

14 OHM ± 20% AT 77°F
± 45 V MAX.
35 MS MAX. AT 28 VDC
35 MS MAX. AT 28 VDC
.004 SEC. MAX. MAKE
.003 SEC. MAX. BREAK NO. ONLY
-67°F TO +160°F
15,000 CYCLES MIN.
100,000 CYCLES
2 LBS. 3 OZ.

NOTE:
DIODES ARE JANTX GLASS CASE 1000 PIV
ZENERS ARE JANTX GLASS CASE

CONFIGURATION CONTROLLED

UNLESS OTHERWISE SPECIFIED DIMENSIONS ARE IN INCHES TOLERANCES ON		REF.		HARTMAN ELECTRICAL MANUFACTURING MANFIELD, OHIO	
±	2 PL DEC.	±	3 PL DEC.	±	ANGLES
MATERIAL		MDC		5D0046-1	
DASH NO		DR BY		H.A.S. 15-10-91	
NEXT ASSY		CHECKED		[Signature]	
USED ON		ENGINEER		[Signature]	
APPLICATION		MFG.		[Signature]	
SIZE		RELEASE		FSCM NO.	
C		CONTR NO.		74063	
SCALE		GOVT APPLV		DWG NO.	
				A-703AK	
				400 AMP 28 VOLTS	
				SHEET 2 OF 2	