



Series 511 Strip-Line™ Socket w/Bifurcated Contacts & Solder Pin Tails

FEATURES

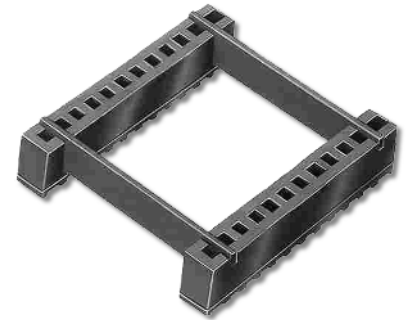
- Mount Liquid Crystal Displays or Other High Pin-count or Odd-centered Components
- Available in Several Sizes with Bifurcated Contacts and Solder Tail or Wire Wrap Pins
- Optional Spacer for Mounting on 0.300 [7.62], 0.600 [15.24], 0.900 [22.86], 1.100 [27.94], and 1.300 [33.02] Centers

GENERAL SPECIFICATIONS

- **BODY:** Black UL 94V-0 Glass-filled 4/6 Nylon
- **PIN:** Grade A Phosphor Bronze per QQ-B-750
- **OPTIONAL SPACER:** FR-4 0.032 [0.81] thick
- **PIN PLATING:** 50-130μ min. matte Sn per ASTM B545-97(2004)e1 over 50μ Ni per SAE AMS-QQ-N-290B; -OR- 50-130μ 90/10 Sn/Pb per MIL-T-10727 Type 1 over 50μ Ni per SAE AMS-QQ-N-290B; -OR- 10μ [0.25μ] min. Au per MIL-G-45204 over 50μ Ni per SAE AMS-QQ-N-290B
- **CURRENT RATING:** 1 amp
- **OPERATING TEMPERATURE:** -67°F to 221°F [-55°C to 105°C] Sn and Sn/Pb; -67°F to 257°F [-55°C to 125°C] Au
- **INSERTION FORCE:** 110g/pin average
- **WITHDRAWAL FORCE:** 75g/pin average
- **ACCEPTED LEADS:** Flat leads up to 0.014 x 0.020 wide [0.36-0.51]; Round Leads up to 0.020 [0.51] dia.
- **LEAD LENGTHS:** from seating plane 0.080-0.160 [2.03-4.06]

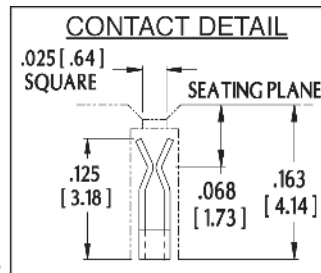
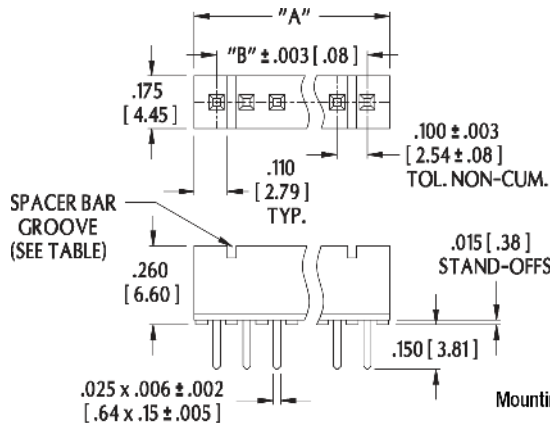
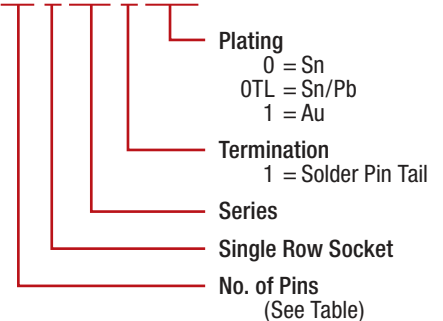
MOUNTING CONSIDERATIONS

- **SUGGESTED PCB HOLE SIZE:** 0.036 ±0.002 [0.91 ±0.05] dia.

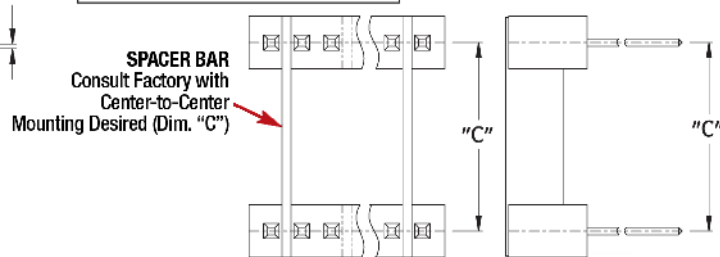


ORDERING INFORMATION

XX-X 511-X XXX



No. of Pins	No. of Grooves
20	2
25	2
30	2
34	3
40	2



ALL DIMENSIONS: INCHES [MILLIMETERS]
 ALL TOLERANCES: ±0.005 [0.13] UNLESS OTHERWISE SPECIFIED
 FOR STRIP-LINE SOCKETS w/WIRE WRAP PINS, SEE DATA SHEETS 12009
 CONSULT FACTORY FOR OTHER SIZES AND CONFIGURATIONS

CUSTOMIZATION: ARIES SPECIALIZES IN CUSTOM DESIGN AND PRODUCTION.
 SPECIAL MATERIALS, PLATINGS, SIZES, AND CONFIGURATIONS CAN BE
 FURNISHED, DEPENDING ON QUANTITY.

ARIES RESERVES THE RIGHT TO CHANGE PRODUCT GENERAL SPECIFICATIONS
 WITHOUT NOTICE

PRINTOUTS OF THIS DOCUMENT MAY BE OUT-OF-DATE AND SHOULD BE
 CONSIDERED UNCONTROLLED



ARIES
ELECTRONICS, INC.

2609 Bartram Road • Bristol, PA 19007-6810 USA
 TEL 215-781-9956 • FAX 215-781-9845
 WWW.ARIESELEC.COM • INFO@ARIESELEC.COM



12008
Rev. 5.1
1 of 1