

Features

- Suitable for LED Indoor Application
- Wide Input Range for Worldwide use (up to 305Vac)
- Multiple Dimming function: (0-10VDC, Digital dimming)
- High Reliability & Long Life up to 50,000hrs
- Safety: UL8750



Type
SELV HL Class P Class 1

SPECIFICATION

Model Name		FSP60-SZAE-WG01
Output	Rated Power	60W max.
	Output Voltage	21-43V
	Rated Current	700mA-1050mA-1400mA (Through Dip Switch Function)
	Output Current Accuracy	±5%
	Line Regulation	±1.0%
	Ripple Current	<5%
	Turn On Delay Time,Rise time	≤1s max ;≤650ms max
Input	Input Voltage/ Frequency[2]	108~305Vac/ 47~63Hz
	Power Factor	PF ≥ 0.99, @ 120Vac input & full load. PF ≥ 0.95, @ 277Vac input & full load.
	Efficiency (typ.)	88% @ 120Vac input & full load. 89% @ 277Vac input & full load.
	Total Harmonic Distortion	THD < 10% (Output Loading ≥ 70% @ 120Vac)
	AC Current	≤ 0.7A /120Vac; ≤ 0.4A /230Vac; ≤ 0.3A /277Vac
	Inrush Current	≤ 20A @ 230Vac / 60Hz & full load & 25°C cold start
	Leakage Current	≤ 1mA/230Vac
Environment	Operating Temperature	-40°C ~ +55°C
	Operating Humidity	10~95% RH non-condensing
	Storage Temperature, Humidity	-40°C~+85°C, 10~95%RH
	Vibration	0.02g ² /Hz at 5 Hz sloping to 0.04g ² /Hz at 20 Hz, and maintaining 0.04g ² /Hz from 20 Hz to 500 Hz at a constant acceleration of 4.43G for 30 minutes per axis for all three axes
Protection	Max. Open Load Protection	<60V
	Open Voltage Protection	Recovers automatically after fault condition is removed
	Short Circuit Protection	Recovers automatically after fault condition is removed
	Over Temperature Protection	Recovers automatically after fault condition is removed
Safety & EMC	Safety Standards	Design Refer to UL8750
	EMC Standard	Compliant with EN55015/CISPR22 CLASS B, EN61000-3-3
	Surge Protection	Differential Mode: 3KV; Common Mode: 3KV
	Withstand Voltage (Hipot)	I/P-O/P: 3000Vac, I/P-CASE: 1500Vac
	Isolation Resistance	I/P-O/P > 25M ohm @ 500Vdc/ 25°C
Others	Life Time [3]	50,000 hours at Tcase of ≤ 75°C
	Dimension (LxWxH)	240 x 43 x 30 mm
	Net Weight / Packing	600g ; 36 pcs/box
	Dimming Range	1-100%

Notes:

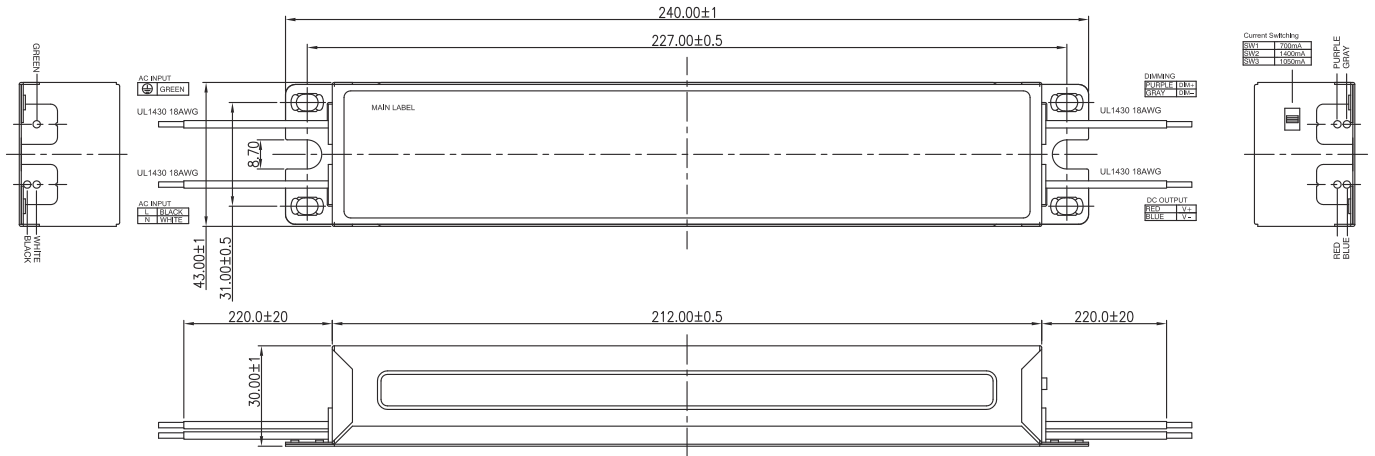
1. All data NOT specially mentioned are measured at 230Vac/ 50Hz input, full load and 25°C of ambient temperature.
2. Derating may be needed under low input voltages. Please check the static characteristics for more details.
3. Measured at 230Vac/50Hz input, full load.
4. The power supply is considered as a component that will be operated in combination with final equipment.
Since EMC performance will be affected by the complete installation, the final equipment manufacturers must re-qualify EMC Directive on the complete installation again.



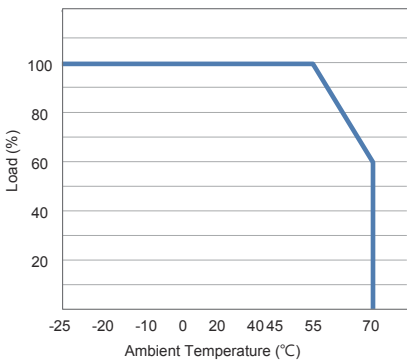
FSP TECHNOLOGY INC.

www.fsp-group.com / sales@fsp-group.com.tw
NO.22, Jianguo E. Rd., Taoyuan City, Taiwan, R.O.C.
TEL : +886-3-375-9888 / FAX : +886-3-375-6966

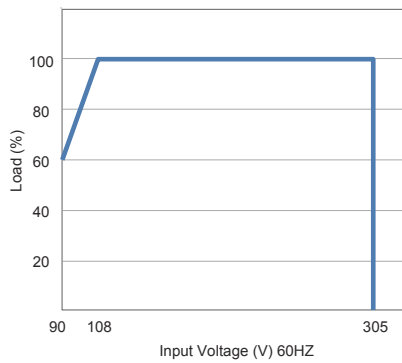
Unit: mm



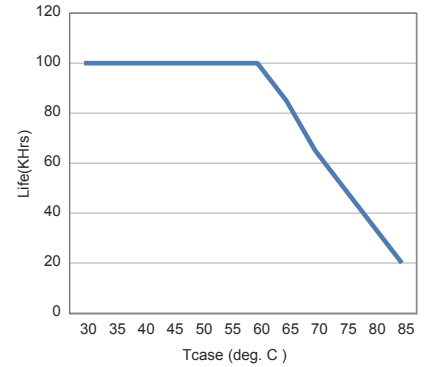
Derating Curve



Static Curve

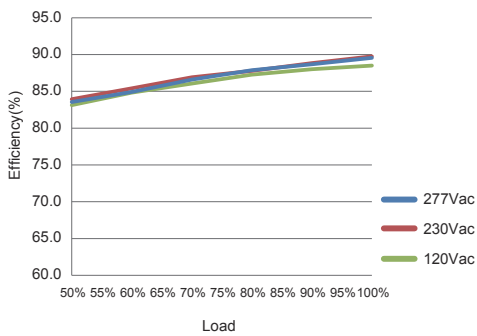


Life Time



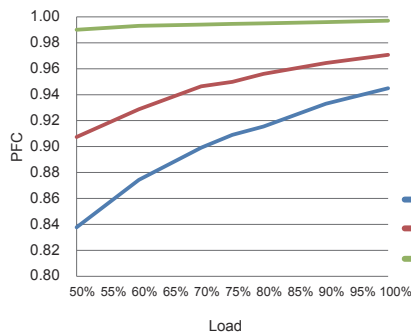
Efficiency

*43V/1400mA



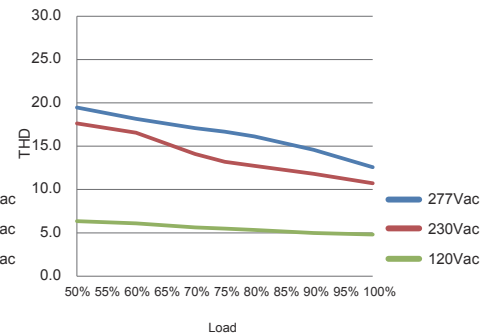
PFC vs Loading

*43V/1400mA



THD vs loading

*43V/1400mA



FSP TECHNOLOGY INC.

www.fsp-group.com / sales@fsp-group.com.tw
 NO.22, Jianguo E. Rd., Taoyuan City, Taiwan, R.O.C.
 TEL : +886-3-375-9888 / FAX : +886-3-375-6966