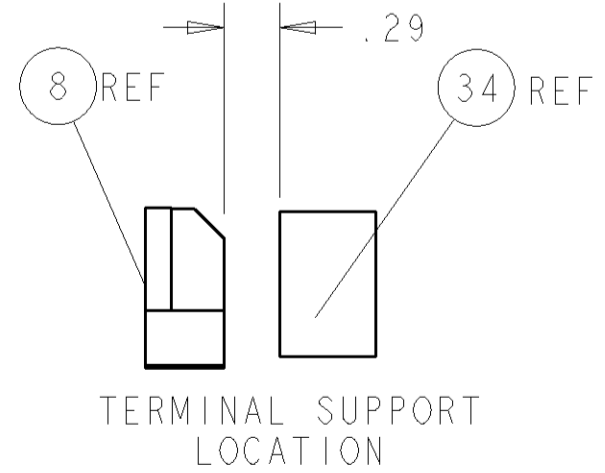
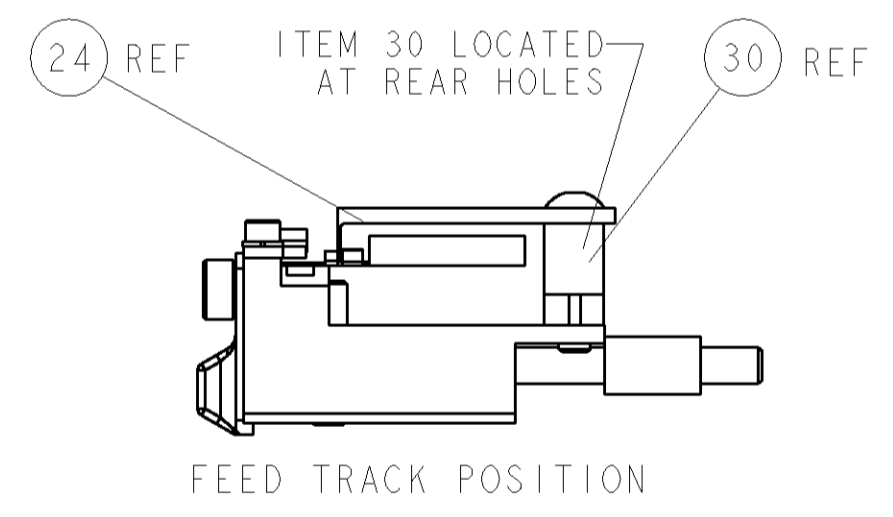
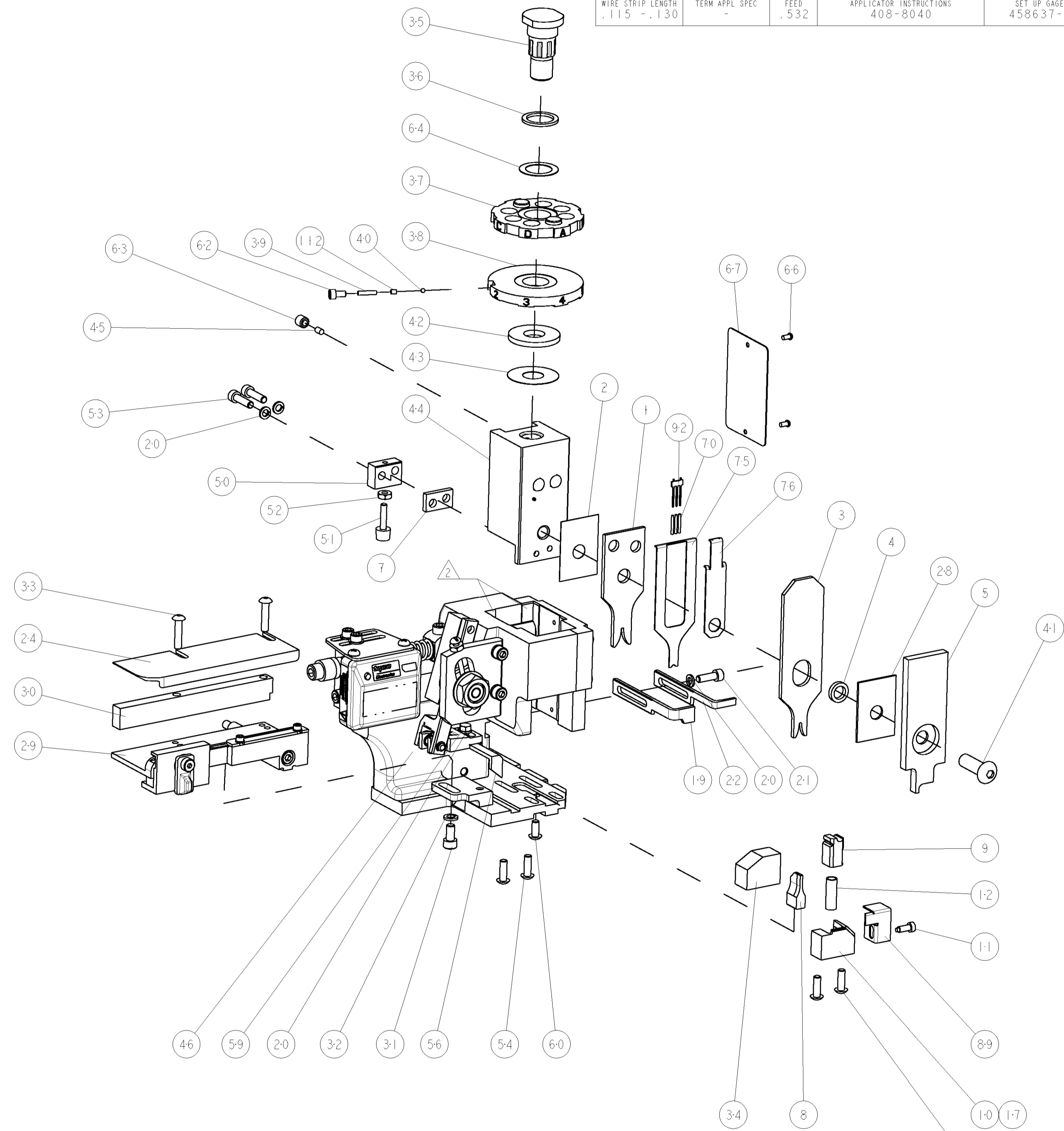
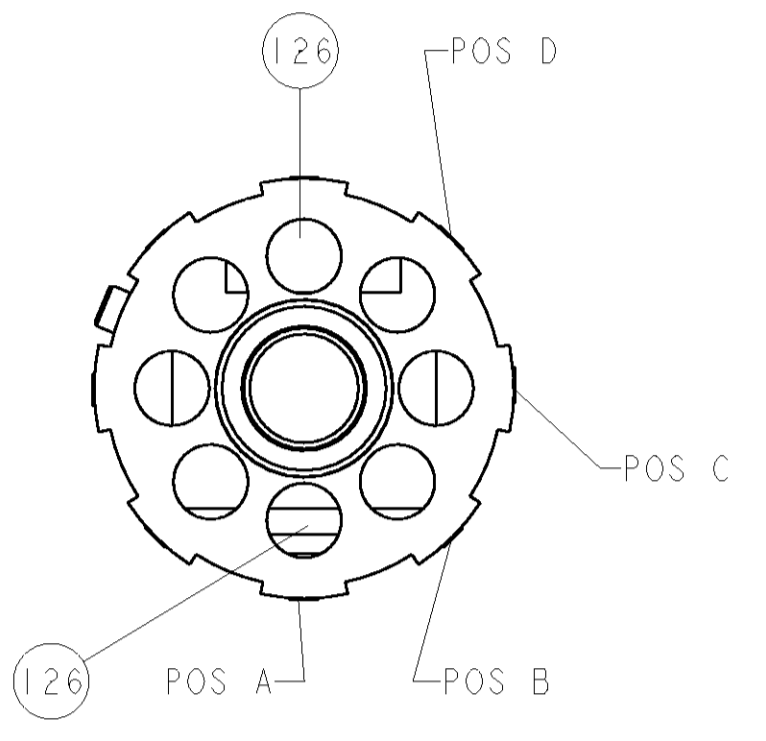


PART NUMBER	REV	FIRST USED	POWER UNIT	FEED TYPE	DESCRIPTION
1852448-1	B	122500-1	LEADMAKER	POST FEED	CUTS CARRIER
1852448-2	B	565435-5	BENCH MODEL K	PRE FEED	CUTS CARRIER
1852448-3	B	354500-1	BENCH MODEL G	PRE FEED	CUTS CARRIER
1852448-6	B	122500-1	LEADMAKER	POST FEED	CONTINUOUS CARRIER
7-1852448-7	A	-	-	-	SPARE PARTS



TERMINAL NAME: BANANA PIN PLUG			
PIN		AMP TERMINAL - AMP CRIMP SPECS	
1954858-2	-	PAD LTR	CRIMP HEIGHT
1954439-2	-	A	WIRE SIZE
-	-	B	
-	-	C	
-	-	D	
-	-	CRIMP	SIZE
-	-	WIRE	TYPE
-	-	INSUL	RANGE
WIRE STRIP LENGTH	TERM APPL SPEC	FEED	APPLICATOR INSTRUCTIONS
.115 - .130	-	.532	408-8040
			SET UP GAGE 458637-1

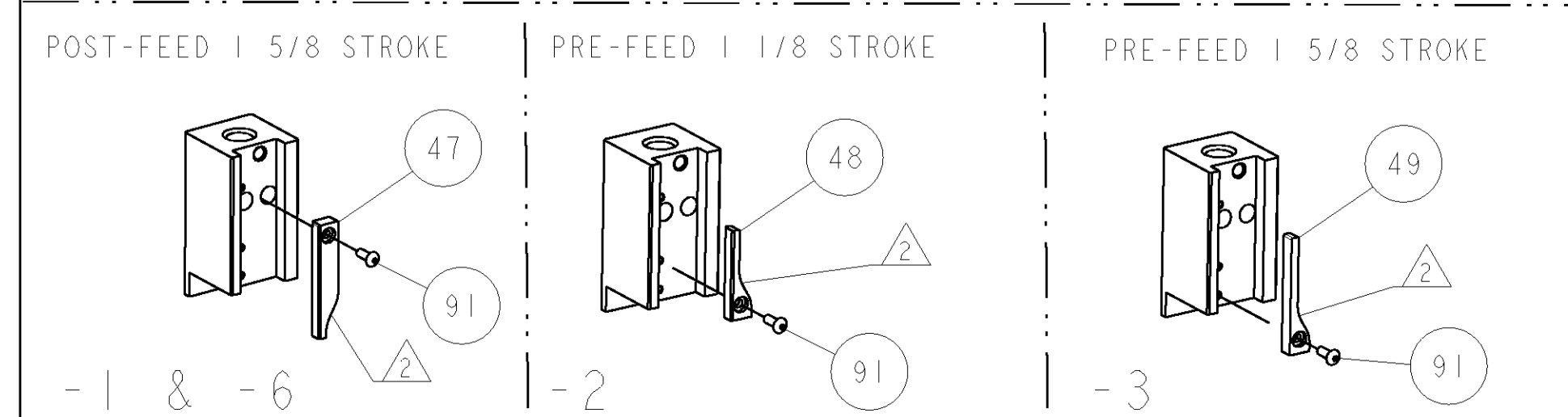
- △ RECOMMENDED SPARE PARTS
- △ GREASE LIGHTLY
- △ GUARD MUST BE IN PLACE WHEN OPERATING APPLICATOR IN A BENCH MACHINE



LOC	DIST	P	LTR	DESCRIPTION	DATE	BY	APPD
A	66						
		A		PRODUCT RELEASE	20APR2007	CMR	TE
		B		ECR-07-016674	16JUL2007	MY	TE
		B1		ECR-07-017072	20JUL2007	MY	GB

QTY	REF	PART NO	DESCRIPTION	ITEM NO
2		4-354779-0	PIN, WIRE DISC, .3190	126
REF		455749-1	GUARD WINDOW	116
REF		679532-1	INSERT, GUARD	115
1		690603-1	SPRING ASSIST AMP-O-MATOR APPLICATOR	112
1		1424350-1	HOLDER, PIN, WIRED	92
1		1-21002-7	SCR, BTN SKT HD CAP 6-32 X .375	91
1		318563-1	GUARD, FRONT CHIP	89
1		1490524-1	DEPRESSOR, SPACER	76
1		1490525-3	DEPRESSOR, WIRE	75
1		4088040	SF APPL INST 408-8040	72
1		217238-1	GENERAL INSTRUCTION PKG	71
3		2-23147-2	SPRING, COMPRESSION	70
1		461264-1	PLATE, IDENTIFICATION	67
2		21017-2	SCREW, DRIVE	66
1		986950-1	WASHER, FLAT PRECISION	64
1		21009-2	SCR, SET, SELF LOCKING 1/4-20 X .250	63
1		23030-1	SCR, SKT HD CAP 6-32 X .25	62
1		22733-8	SCR, BHSC, SELF-LOCKING, 8-32 X .375	60
1		2-22603-0	SCR, HEX HD CAP 8-32 X .312	59
1		4-694433-1	FEED PAWL	56
4		2-21002-2	SCR, BTN SKT HD CAP 8-32 X .500	54
2		2-21000-8	SCR, SKT HD CAP 8-32 X .625	53
1		21018-5	NUT, HEX, REG 6-32	52
1		811242-2	BUMPER, HOLD DOWN	51
1		690753-1	SPACER, TONKER	50
1		690602-6	CAM, PRE FEED, 1 5/8	49
1		690602-5	CAM, PRE FEED, 1 1/8	48
1		690501-4	CAM, POST FEED, 1 5/8	47
1		459456-1	APPL. BASIC SUB ASSY (SIDE WISE MQCA)	46
1		690191-1	PLUG, NYLON	45
1		455673-1	RAM, SIDE FEED	44
1		690125-1	SHIM SUB-ASSY	43
1		1-690124-4	WASHER, RAM (.120)	42
1		7-21002-9	SCR, BTN SKT HD CAP 5/16-24 X 1.00	41
1		23241-6	BALL, STEEL	40
1		690170-1	SPRING, COMPRESSION	39
1		690142-1	DISC, INSULATION	38
1		354777-1	WIRE DISC, ASSEMBLY	37
1		22480-5	SPRING, COMPRESSION	36
1		690212-1	POST, RAM	35
1		3-690786-3	TERMINAL SUPPORT	34
2		2-21002-4	SCR, BTN SKT HD CAP 8-32 X .750	33
1		21024-5	WASHER, SPRG LOCK, REG NO 10	32
1		3-21000-4	SCR, SKT HD CAP 10-32 X .375	31
1		1320908-2	SPACER, STRIP GUIDE	30
1		1633091-1	ASSEMBLY, STRIP GUIDE	29
1		1-455888-0	SPACER, CRIMPER	28
1		1320928-6	PLATE, STRIP GUIDE	24
1		690472-2	STRIPPER	22
1		2-21000-7	SCR, SKT HD CAP 8-32 X .500	21
4		21024-4	WASHER, SPRG LOCK, REG NO 8	20
1		691353-1	STRIPPER	19
1		679625-1	SHEAR HOLDER, FRONT (NO CUT)	17
1		5-22280-0	SPRING, COMPRESSION	12
1		690461-1	STOP, SHEAR	11
1		690459-1	SHEAR HOLDER, FRONT	10
1		462006-1	FLOATING SHEAR, FRONT	9
1		7-1633117-5	ANVIL, COMBINATION	8
1		240641-5	SPACER	7
1		1-455889-4	DEPRESSOR, SHEAR	5
1		238011-4	BLOCK, CRIMPER SPACER	4
1		7-1583690-0	CRIMPER, INSUL O	3
1		455888-1	SPACER, CRIMPER	2
1		5-456403-7	CRIMPER, WIRE PREMIUM	1



DIMENSIONS: INCHES		TOLERANCES UNLESS OTHERWISE SPECIFIED:	
0 PLC	±	1 PLC	±0.1
1 PLC	±	2 PLC	±0.01
2 PLC	±	3 PLC	±0.001
3 PLC	±	4 PLC	±0.0001
4 PLC	±	ANGLES	±0.001
MATERIAL		FINISH	
-		-	

DATE	APPROVED	DESIGNED	DRAWN
02MARCH2007	T. ELBIN	T. ELBIN	T. ELBIN
NAME		NAME	
T. BENCHOFF		T. BENCHOFF	
PRODUCT SPEC		PRODUCT SPEC	
-		-	
APPLICATION SPEC		APPLICATION SPEC	
-		-	
SIZE	CAGE CODE	DRAWING NO	RESTRICTED TO
A1	00779	C=1852448	-
CUSTOMER DRAWING		SCALE	SHEET
-		3:5	1 OF 1

CUSTOMER VIEWABLE ASSEMBLY