

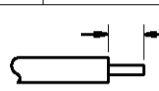
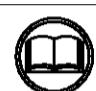
PART NUMBER	REV	TERMINATOR	FEED TYPE	DESCRIPTION
1239060-1	A	BENCH & LEADMAKER	MECH POST FEED	HDI APPLICATOR
7-1239060-1	A	BENCH & LEADMAKER	MECH POST FEED	-1 AND SPARE PARTS
7-1239060-7	A	-	-	SPARE PARTS KIT

LOC		DIST		REVISIONS			
A	66	F	LTR	DESCRIPTION	DATE	DWN	APVD
A	66			RELEASED	27APR2009	RK	GB

CRIMP DATA TE TERMINAL TE CRIMP SPECS

TERMINAL NAME: .180 DIA. SHUR PLUG

CRIMP	SIZE	TYPE	RANGE
WIRE	2.79 [.110 IN]	F	18-14 AWG
INSUL	4.57 [.180 IN]	F	3.05-4.45 [.120-.175 IN]

WIRE STRIP LENGTH 3.96-4.78 [.156-.188 IN]  APPL INSTRUCTIONS 408-8323 

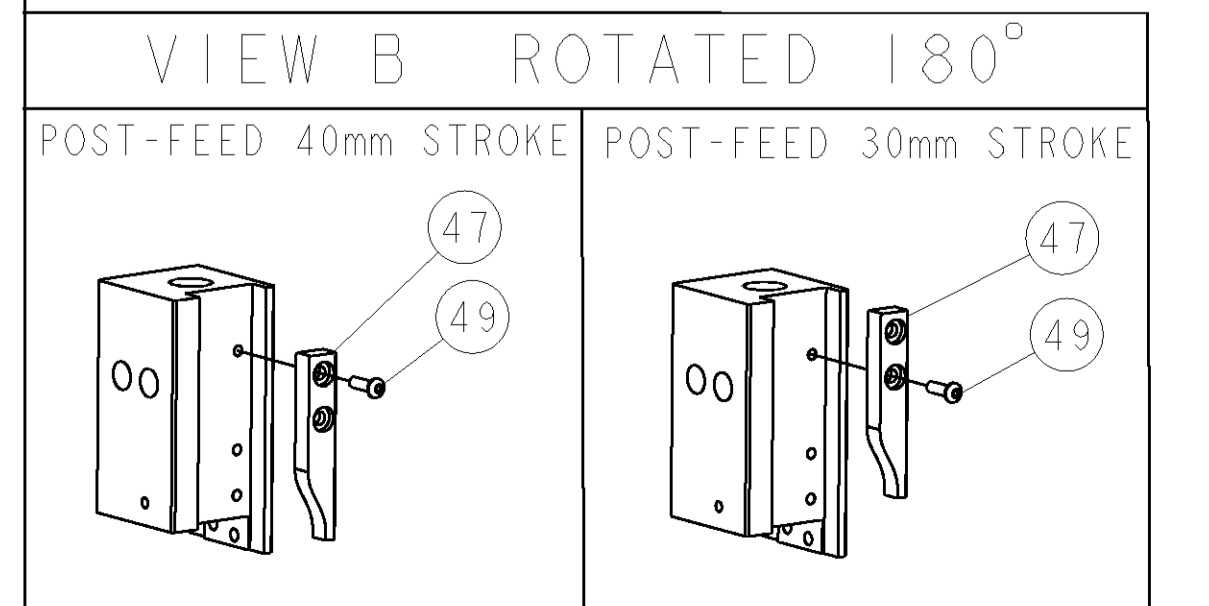
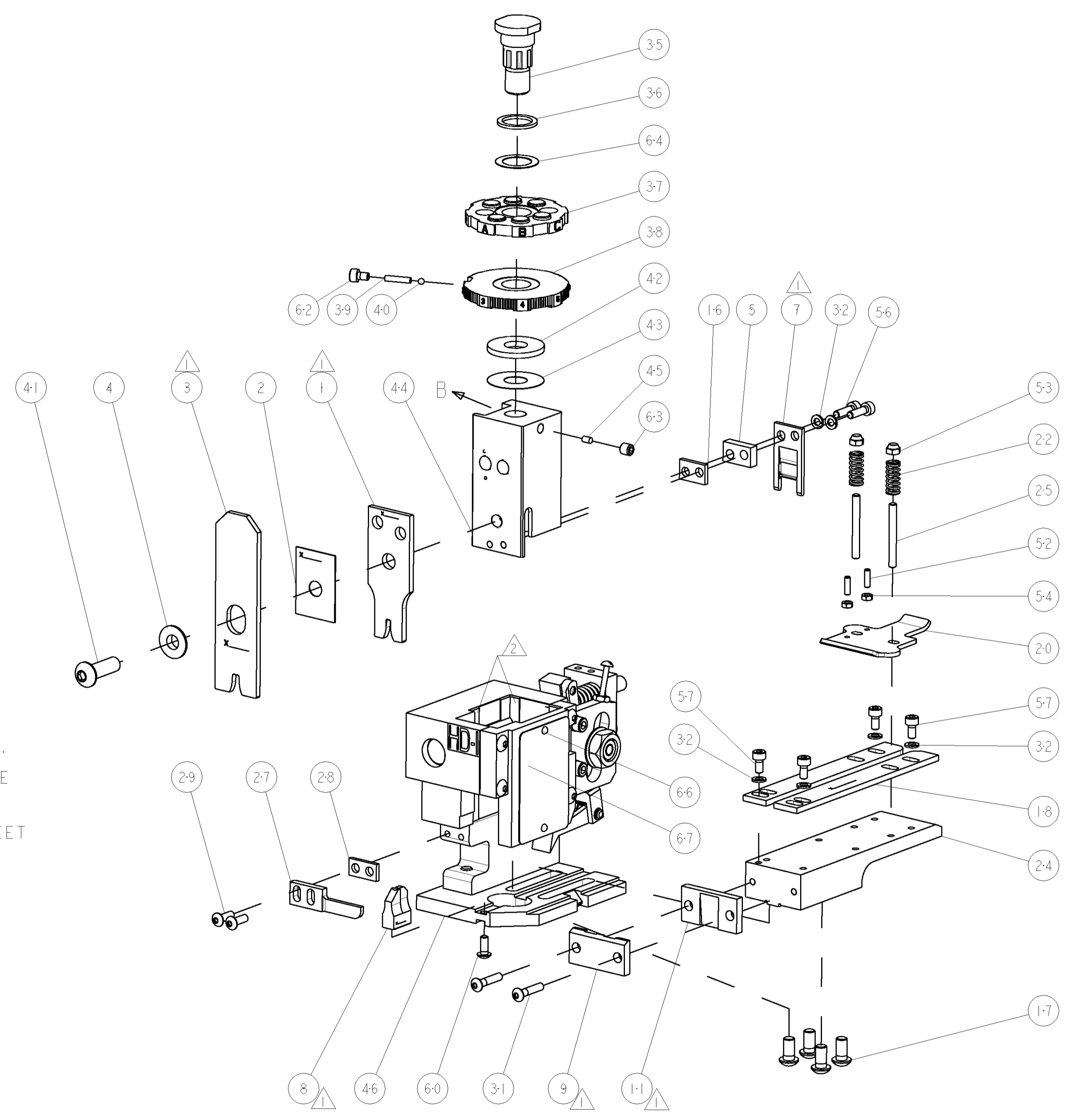
TERMINAL 114-2042 FEED 20.32 [.800 IN]
 APPL SPEC -

TERMINALS APPLIED

TERMINAL	-	-	-
60660	-	-	-
62715	-	-	-
-	-	-	-
-	-	-	-

WIRE SIZE	CRIMP HEIGHT	PIN PN & LENGTH [IN]
14 AWG	1.98 ±0.05 [.078 ±.002 IN]	6-354778-8 [.2835]
16 AWG	1.75 ±0.05 [.069 ±.002 IN]	8-354778-7 [.2930]
18 AWG	1.60 ±0.05 [.063 ±.002 IN]	354779-2 [.3000]
-	-	-
-	-	-
-	-	-
-	-	-
-	-	-
-	-	-
-	-	-
-	-	-

- 1 RECOMMENDED SPARE PARTS
- 2 GREASE RAM, CAM, CAM FOLLOWER AND FEED ROD LIGHTLY.
- 3 CERTAIN TERMINALS REQUIRE LUBRICATION. REFER TO THE APPLICATOR INSTRUCTION SHEET FOR MORE INFORMATION.
- 4. LUBRICATE DAILY PER THE APPLICATOR INSTRUCTION SHEET SUPPLIED WITH THE APPLICATOR.



-	1	1	1338705-2	DOCUMENTATION PACKAGE	71	
-	1	1	461264-1	PLATE, IDENTIFICATION	67	
-	2	2	21017-2	SCREW, DRIVE	66	
-	1	1	986950-1	WASHER, FLAT PRECISION	64	
-	1	1	3-18031-0	SCR, SET, CUP POINT M6 X 6.0	63	
-	1	1	18023-9	SCR, SKT HD CAP M4 X 6.0	62	
-	1	1	18024-7	SCR, BTN SKT HD CAP (M4 X 10.0)	60	
-	4	4	1-18023-0	SCR, SKT HD CAP M4 X 8.0	57	
-	2	2	9-18023-6	SCR, SKT HD CAP M4 X 14.0	56	
-	2	2	18029-1	NUT, HEX, REG M3	54	
-	2	2	986965-1	NUT, LOCK, HEX, TORQUE (M4)	53	
-	2	2	2-18032-2	SCR, SET, FLT POINT M3 X 10.0	52	
-	1	1	18024-3	SCR, BTN SKT HD CAP (M3 X 10.0)	49	
-	1	1	1338676-1	CAM, UNIVERSAL POST-FEED	47	
-	1	1	1338662-1	SUB ASSY, APPLICATOR FRAME	46	
-	1	1	690191-1	PLUG, NYLON	45	
-	1	1	1320998-1	RAM	44	
-	1	1	690125-1	SHIM SUB-ASSY	43	
-	1	1	690124-1	WASHER, RAM (.115)	42	
-	1	1	2-18024-6	SCR, BTN SKT HD CAP (M8 X 25.0)	41	
-	1	1	23241-1	BALL, STEEL	40	
-	1	1	2-22278-7	SPRING, COMPRESSION	39	
-	1	1	1320922-1	DISC, ADJUST, INSULATION CRIMP	38	
-	1	1	354777-1	WIRE DISC, ASSEMBLY	37	
-	1	1	22480-5	SPRING, COMPRESSION	36	
-	1	1	690212-1	POST, RAM	35	
-	6	6	18025-2	WASHER, SPRG LOCK, REG M4	32	
-	2	2	1-18024-0	SCR, BTN SKT HD CAP (M4 X 20.0)	31	
-	2	2	18024-8	SCR, BTN SKT HD CAP (M4 X 12.0)	29	
-	1	1	1-690451-1	SPACER, STRIPPER	28	
-	1	1	240639-1	STRIPPER (MACHINING)	27	
-	2	2	1320906-1	STUD, THREADED	25	
-	1	1	1-1320995-2	PLATE, STRIP GUIDE	24	
-	2	2	4-22281-1	SPRING, DRAG	22	
-	1	1	1338665-1	DRAG	20	
-	2	2	454204-4	GUIDE, LOWER STRIP	18	
-	4	4	1-18024-8	SCR, BTN SKT HD CAP (M6 X 12.0)	17	
-	1	1	1338708-1	SPACER, SLUG BLADE	16	
-	1	1	240644-5	PLATE, REAR SHEAR	11	
-	-	-	-	-	10	
-	1	1	1-690496-1	PLATE, FRONT SHEAR	9	
-	1	2	1-1633383-3	ANVIL, COMBINATION	8	
-	1	1	690474-5	BLADE, SLUG	7	
-	-	-	-	-	6	
-	1	1	3-240641-5	SPACER	5	
-	1	1	238009-1	BLOCK, FL CRIMPER SPACER	4	
-	1	2	1-1633471-5	CRIMPER, INSULATION F	3	
-	1	1	455888-4	SPACER, CRIMPER	2	
-	1	2	456408-3	CRIMPER, WIRE PREMIUM	1	
-	77	71	-1	PART NO	DESCRIPTION	ITEM NO

TYCO ELECTRONICS CORPORATION, 17105-3608 HARRISBURG, PA 17105-3608

DWN: L. ZHANG 01APR2009
 CHK: S. ZOU 01APR2009
 APVD: W. DEMING 01APR2009

NAME: END FEED HDI APPLICATOR

PRODUCT SPEC: -
 APPLICATION SPEC: -

SIZE: A1 CAGE CODE: 00779 DRAWING NO: 1239060
 SCALE: 3:5 SHEET 1 OF 1 REV A

CUSTOMER DRAWING