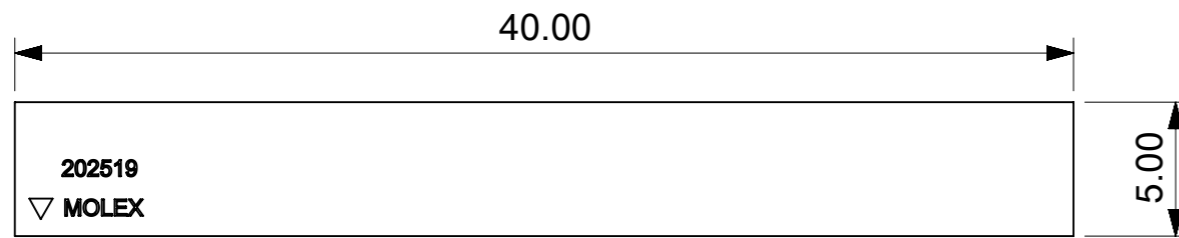
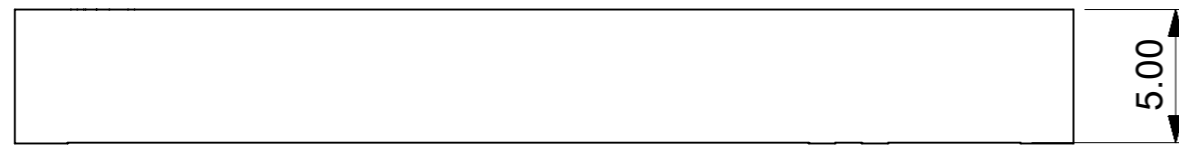


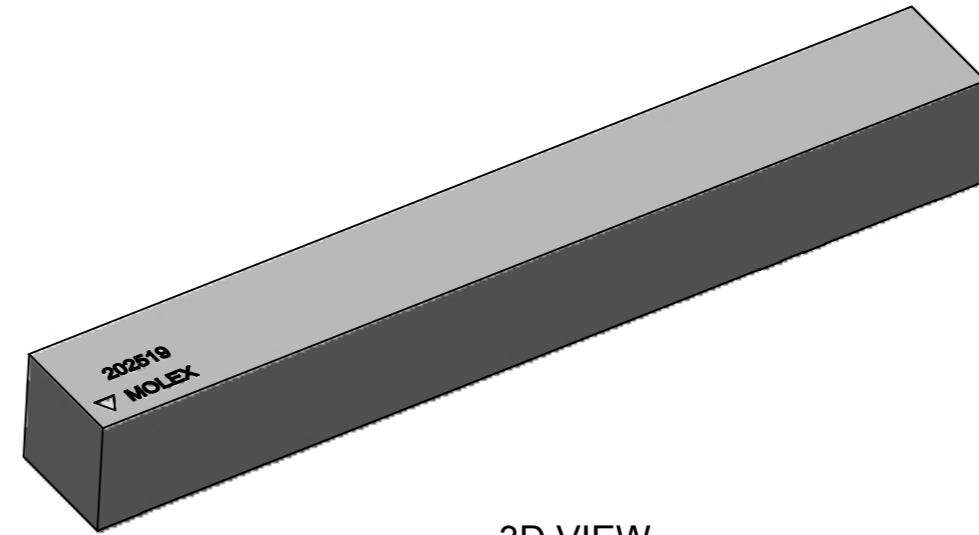
REV	DATE	DESCRIPTION
A	2016/12/12	NEW RELEASE
B	2020/01/09	UPDATE FORMAT



TOP VIEW



SIDE VIEW

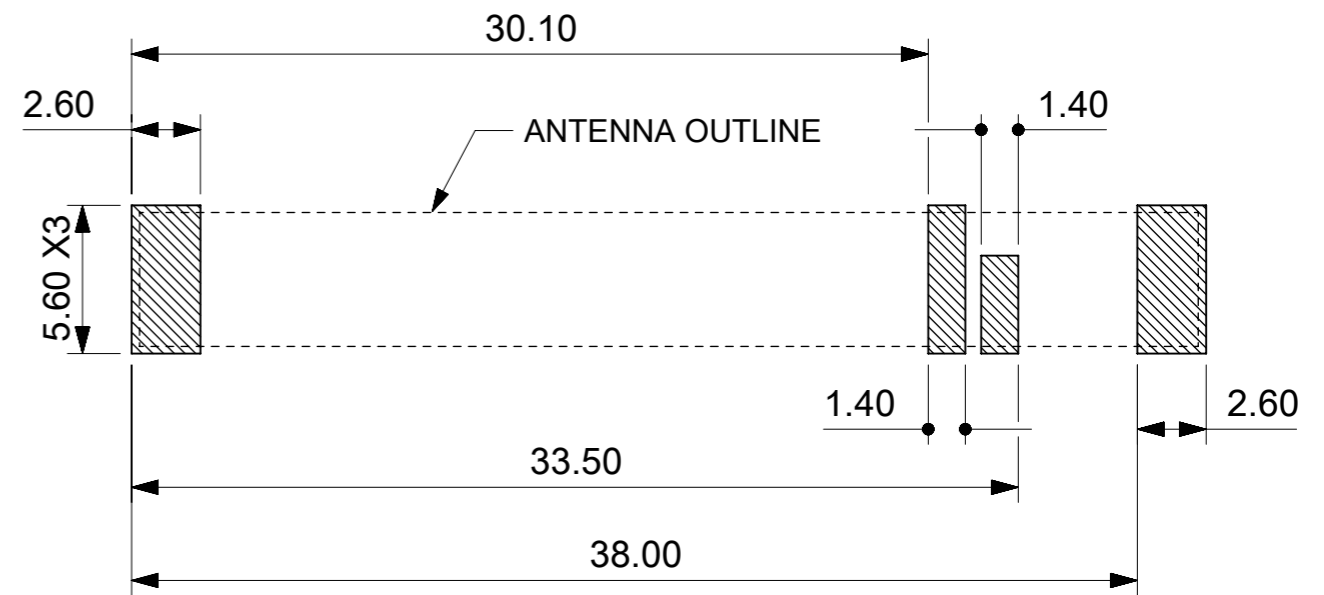


3D VIEW



BOTTOM VIEW

PADS OF PRODUCT FOR SOLDER



RECOMMENDED PCB LAYOUT

NOTES:

1. MATERIAL: CERAMIC.
2. PATTERN: Ag PLATED, THICKNESS 4-10um.
3. PACKAGE SPEC. REFER TO PK OF 2025190001.
4. PRODUCT SPEC. REFER TO PS OF 2025190001.
5. APPLICATION SPEC. REFER TO AS OF 2025190001.
6. SUGGEST TO USE RED GLUE UNDER PART BEFORE SMT IF APPLICATION CONDITION IS STRICT.

SYMBOLS		THIS DRAWING CONTAINS INFORMATION THAT IS PROPRIETARY TO MOLEX ELECTRONIC TECHNOLOGIES, LLC AND SHOULD NOT BE USED WITHOUT WRITTEN PERMISSION	
▽ = 0	mm	SCALE	2:1
▽ = 0	GENERAL TOLERANCES (UNLESS SPECIFIED)		
▽ = 0	ANGULAR TOL ± 1.0°		
▽ = 0	4 PLACES	±	
▽ = 0	3 PLACES	±	0.2
▽ = 0	2 PLACES	±	0.3
▽ = 0	1 PLACE	±	0.5
▽ = 0	0 PLACES	±	1.0
■ = 0	DRAFT WHERE APPLICABLE MUST REMAIN WITHIN DIMENSIONS		
▽ = 0	THIRD ANGLE PROJECTION		
CURRENT REV DESC:		EC NO: 630268	
		DRWN: KCHENG06 2017/11/08	
		CHK'D: XJSONG 2020/01/13	
		APPR: XJSONG 2020/01/13	
INITIAL REVISION:		DRWN: TZHOU07 2016/12/01	
		APPR: CYU08 2016/12/13	
DOCUMENT NUMBER		2025190001	
DOC TYPE		PSD	
DOC PART		SD	
REVISION		B	
MATERIAL NUMBER		2025190001	
CUSTOMER		GENERAL MARKET	
SHEET NUMBER		1 OF 1	