

SAFETY ORGANIZATION(S):

THIS FILTER HAS BEEN FORMALLY RECOGNIZED, CERTIFIED OR APPROVED BY THE LISTED AGENCY. THEREFORE, ALL TEST/REQUIREMENTS SPECIFIED IN THE LATEST REVISION OF THE FOLLOWING AGENCY STANDARDS HAVE BEEN MET:

UL RECOGNIZED  
 CSA CERTIFIED  
 VDE APPROVED

UL 1283  
 CSA 22.2, NO. 0, 0.4, 8  
 VDE 565-3

OPERATING SPECIFICATIONS:

LINE VOLTAGE/CURRENT:  
 3.0 AMP., 120/250 VAC  
 2.5 AMP./40°C, 250 VAC

LINE FREQUENCY:  
 50-60Hz  
 40°C

MAX. CASE RISE  $\theta$  RATED CURRENT:

MAX. LEAKAGE CURRENT, EACH

LINE TO GROUND

OPERATING AMBIENT TEMP. RANGE:

IN AN AMBIENT,  $T_a$ , HIGHER THAN 40°C, THE MAXIMUM OPERATING CURRENT,  $I_o$ , IS AS FOLLOWS:

$$I_o = I_r \sqrt{\frac{85 - T_a}{45}}$$

RELIABILITY SPECIFICATIONS:

STORAGE TEMPERATURE:  
 -40°C TO +85°C

HUMIDITY:  
 21 DAYS  $\theta$  40°C 95% RH

CURRENT OVERLOAD TEST:  
 6 TIMES RATED CURRENT FOR 8 SECONDS

TEST SPECIFICATIONS:

INDUCTANCE:  
 1.02 mH NOMINAL

CAPACITANCE: (MEASURED  $\theta$  1 KHz, 0.25 VAC MAX., 25°C  $\pm$  1°C)

LINE TO GROUND:  
 .011  $\mu$ F  $\pm$  20%

LINE TO LINE:  
 .543  $\mu$ F  $\pm$  20%

DISCHARGE RESISTOR:  
 330 K $\Omega$

LINE/GROUND AND LINE/LINE  
 INSULATION RESISTANCE  
 6000 M $\Omega$  (MIN) AT 100 VDC

(W/O DISCHARGE RESISTOR)  
 20°C AND 50% RH

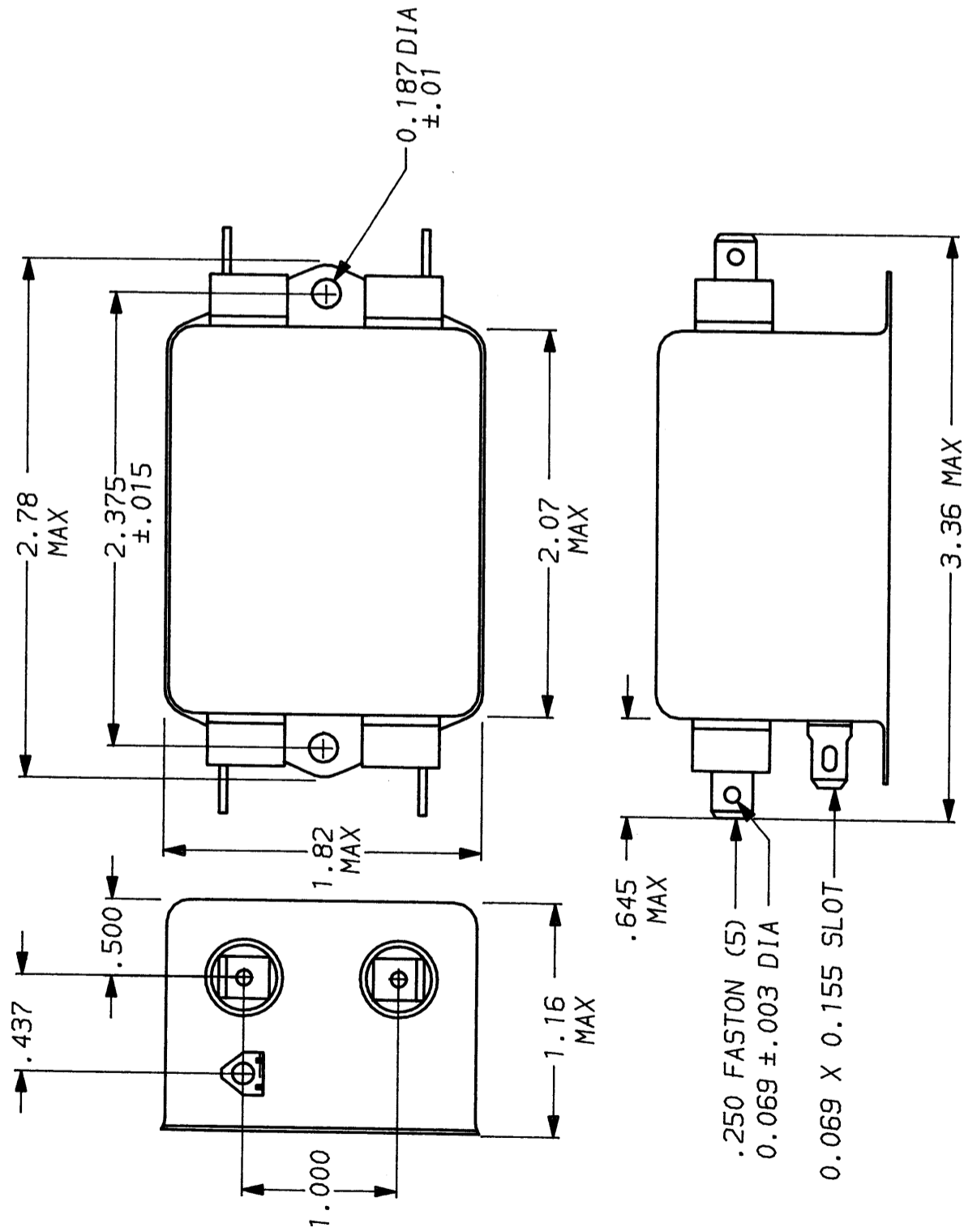
RECOMMENDED RECEIVING INSPECTION HIPOT:

LINES TO GROUND:  
 2250 VDC FOR 1 MINUTE

LINE TO LINE:  
 1450 VDC FOR 1 MINUTE

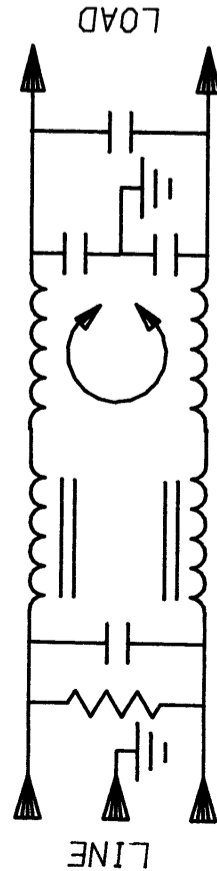
FILTER APPROVAL:

THE BEST WAY TO SELECT AND QUALIFY A FILTER IS FOR YOUR ENGINEERING TO TEST THE UNIT IN YOUR EQUIPMENT.



50 $\Omega$ - 50 $\Omega$ (MINIMUM)		INSERTION LOSS					
FREQUENCY MHz	.15.5	1	2	5	10	20	30
COMMON	15	27	35	40	45	47	47
DIFF. dB	35	65	65	65	62	50	40
							45

This document is proprietary to CORCOM INC. and is not to be reproduced nor used for manufacturing purposes except on CORCOM's order or prior written consent.



TOLERANCE EXCEPT AS NOTED  
 DECIMAL: .XXX .XX .X ANGLES  $\pm$  1°  
 ENGLISH:  $\pm$ .025  
 METRIC:  $\pm$  —  
 MATERIAL:  
 AS SUPPLIED



FINISH:  
 AS SUPPLIED

SCALE: NTS 9-12-89  
 DATE: 9-12-89  
 DRW. BY: TDL  
 ORIGINATOR: CW

DRG. NO. 3VS1.06  
 REV. 06