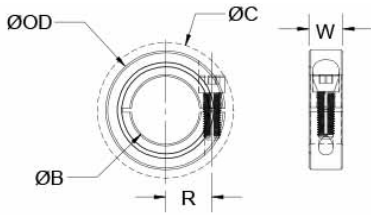




MCL-14-P

Ruland MCL-14-P, 14mm One-Piece Shaft Collar, Plastic, Clamp Style, 30mm OD, 11mm Width



Description


Ruland MCL-14-P is a one-piece shaft collar with a 14mm bore, 30mm OD, and 11mm width. The clamp style design does not mar the shaft, is easy to remove, and is indefinitely adjustable. It is commonly used for guiding, spacing, stopping, mounting, and component alignment. Equipment manufacturers benefit from the tightly controlled face to bore perpendicularity (TIR of ? .05mm). Perpendicularity is critical for alignment when the shaft collar is used as a load bearing face, mechanical stop, or for mounting components such as gears or bearings. Proprietary processes have been developed by Ruland to maintain superior fit, finish, and holding power. MCL-14-P is stamped with the Ruland name and bore size for ease of identification. Forged screws test beyond DIN 912 12.9 standards to ensure maximum holding power. MCL-14-P is manufactured from solid bar stock sourced from select North American mills and machined to a fine burr free finish. Ruland uses engineered acetal plastic for a consistent finish. MCL-14-P is RoHS3 and REACH compliant and manufactured in our Marlborough, MA factory under strict controls using proprietary processes.

Product Specifications

Bore (B)	14 mm	Bore Tolerance	+0.050 mm / +0.012 mm
Outer Diameter (OD)	30 mm	Clearance Diameter (C) MAX	33.7 mm
Width (W)	11 mm	Width Tolerance	+0.076 mm / -0.254 mm
Recommended Shaft Tolerance	+0.000 mm / -0.013 mm	Forged Clamp Screw	M4 x 14
Screw Material	18-8 300 Series Stainless Steel	Hex Wrench Size	3.0 mm
Screw Finish	Bright	Seating Torque	1.1 Nm
Screw Location (R)	11.00 mm	Number of Screws	1 ea
Material Specification	Acetal Bar	Finish Specification	Plain
Manufacturer	Ruland Manufacturing	Country of Origin	USA
Temperature	-10°F to 185°F (-23°C to 85°C)	Weight (lbs)	0.021500
UPC	634529113769	Tariff Code	8483.60.8000
UNSPC	31162811		

Note 1 Performance ratings are for guidance only. The user must determine suitability for a particular application.

Note 2 No backslot

Prop 65  **WARNING** This product can expose you to chemicals including Nickel (metallic) and Formaldehyde, known to the State of California to cause cancer. For more information go to www.P65Warnings.ca.gov.

Installation Instructions

1. Use the MCL-14-P one-piece shaft collar as it is received.
2. Wipe the bore clean.
3. Apply a thin coat of light oil to the shaft.
4. Place the collar onto the desired shaft location with the groove side as the work surface. Tighten the collar using a 3.0 mm hex wrench until a slight resistance is felt.
5. Wring collar into its final position and tighten the screw to the full recommended seating torque of 1.1 Nm using a 3.0 mm torque wrench.