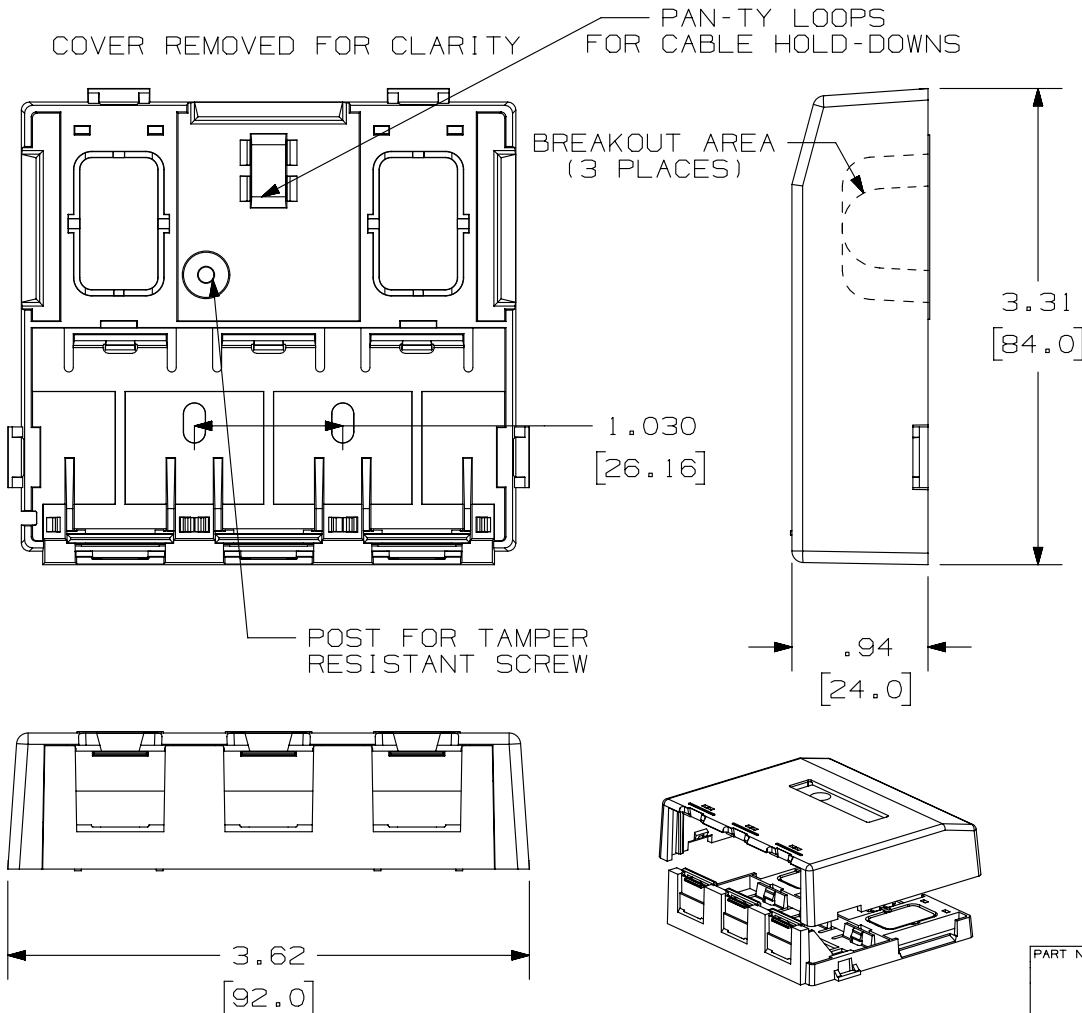


THIS COPY IS PROVIDED ON A RESTRICTED BASIS AND IS NOT TO BE USED IN ANY WAY DETRIMENTAL TO THE INTERESTS OF PANDUIT CORP.



PANDUIT P/N	WEIGHT
CBXS3**-AY	1.38 LB/10 PCS (624.2 g/10 PCS)

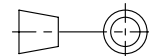
- NOTES:
- SEE CURRENT CATALOG FOR ADDITIONAL PART NUMBER SUFFIXES TO INDICATE COLOR AND OR PACKAGE QUANTITY.
  - SEE CATALOG FOR A COMPLETE LIST OF PARTS APPLICABLE FOR USE WITH THIS PART.
  - DIMENSIONS IN [ ] ARE IN METRIC.
  - BOX INCLUDES:
    - BOX BASE
    - BOX COVER
    - PLT1.5I-M PAN-TY™
    - LABEL/ LABEL COVER
    - MOUNTING SCREW
    - MOUNTING SCREW (USED TO SECURE COVER TO BASE)
    - STRIP OF 1.00" X .75" FOAM TAPE FOR MOUNTING
    - STRIP OF 3.00" X .75" FOAM TAPE FOR MOUNTING
  - BASE HAS TWO POCKETS FOR OPTIONAL MAGNET (CSBM-X)
  - BREAKOUTS DESIGNED TO ACCEPT LD5/LDPH5 RACEWAY. (DOES NOT ENTER BOX.)
  - BASE MATERIAL THICKNESS= .090 [ 2.29 ]

NO WARRANTY, EXPRESSED OR IMPLIED, IS MADE BY PANDUIT WITH RESPECT TO ADHESIVE BOND PERFORMANCE. AMONG OTHER THINGS, THE CONDITIONS UNDER WHICH THESE MOUNTS MAY BE APPLIED AND/OR THE SURFACE TO WHICH THEY MAY BE APPLIED ARE BEYOND PANDUIT'S CONTROL.

PART NUMBER		CBXS3**-AY	
TITLE			
MINI-COM 3 POSITION SHUTTERED SURFACE MOUNT BOX			
CUSTOMER DRAWING			
ITEM REVISION NAME		M02479ET/07	
DATASET FILE NAME		M02479ET_DC126/07A	
UNLESS OTHERWISE SPECIFIED, DIMENSIONAL TOLERANCES ARE: IN [ mm ]		MATERIAL:	
.x ± .xx ± .03 [ .8 ]		.xxx ± .010 [ .3 ]	
ANGLES ±		DRAWING NUMBER:	
THIRD ANGLE PROJECTION		02479-126	
DRAWN BY	DATE	CHK	SCALE
MDJR	7-29-06	MJD	NONE
SHT 1 OF 1			SIZE
			A

REV	DATE	BY	CHK	APR	DESCRIPTION	ECN
1	3/19/14	JSP	REFR	MMR	A. REVISED DRAWING TITLE BLOCK.	02479-126
R	7-29-06	MDJR	MJD	MJD	RELEASED TO PRODUCTION	02479-126

**PANDUIT**



THIRD ANGLE PROJECTION

D10100DA/14