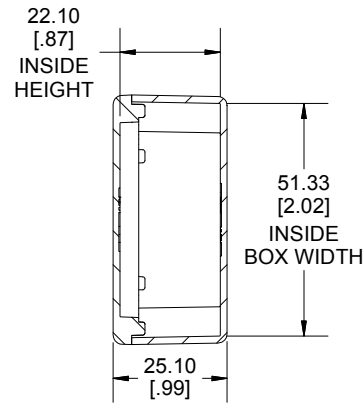
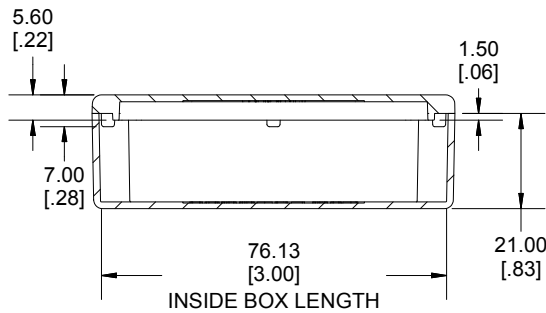
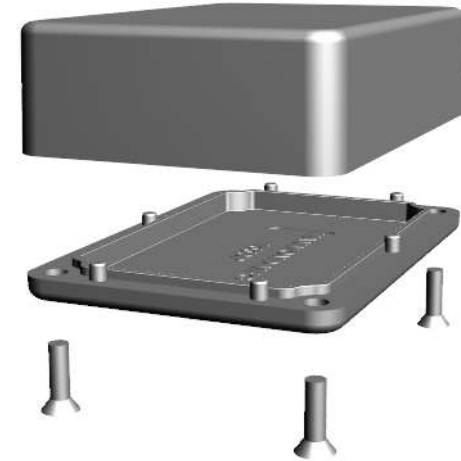


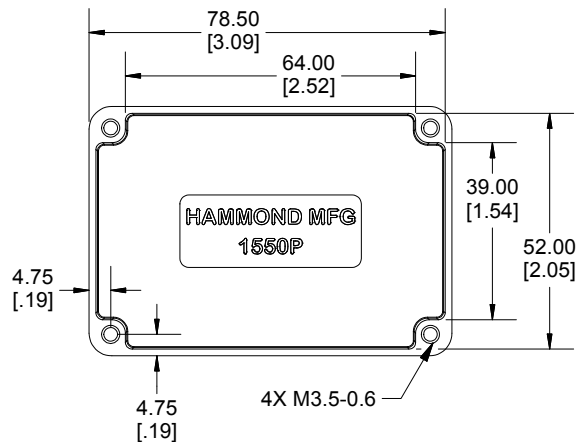
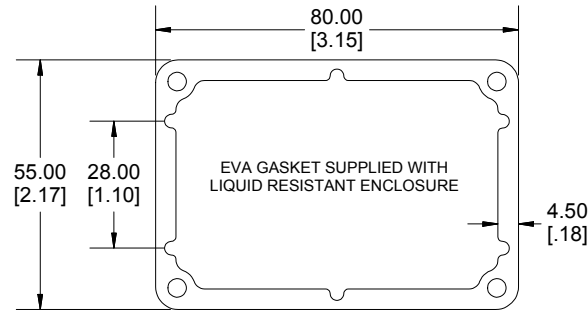
TOP VIEW



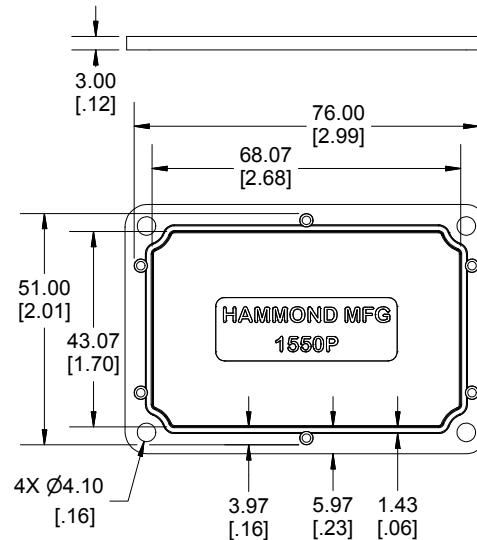
SECTION A-A
END VIEW



SECTION B-B
SIDE VIEW



INSIDE BOX



INSIDE LID

Enclosures can be Factory Modified (Milling, Drilling, Printing etc.)
Contact Factory mjm@hammondmfg.com for quotes
Solid models of this enclosure available in STEP or IGES.

| NOTE | |
|--|--|
| Purchased assembly includes box, lid and 4 cover screws. | |
| Box and lid are made from Diecast Aluminum Alloy. | |
| EVA Gasket supplied with liquid resistant enclosure. | |

| PART NUMBERS | |
|--|--------------|
| 1550P Enclosure | |
| Natural Finish Enclosure | 1550P |
| Black Textured Enclosure | 1550PBK |
| 1550P Liquid Resistant Enclosure (EVA Gasket) | |
| Natural Finish Enclosure | 1550WP |
| Black Textured Enclosure | 1550WPBK |
| ACCESSORIES | |
| Recommended Torque: 75 ozf.in / 55 cN.m | |
| Standard Cover Screws | |
| Plated Cover Screws (Pkg 100) [M3.5-0.6 x 12mm] | 1550MS100 |
| Black Cover Screws (Pkg 100) [M3.5-0.6 x 12mm] | 1550MS100BK |
| Liquid Resistant Cover Screws and Gaskets | |
| Stainless Steel Cover Screws (Pkg 100) [M3.5 x 12mm, With O-Ring] | 1550WMS100 |
| Black Stainless Steel Cover Screws (Pkg 100) [M3.5 x 12mm, With O-Ring] | 1550WMS100BK |
| EVA Pre-formed Gasket Black | 1550PEGASKET |
| Silicone Pre-formed Gasket Black | 1550PSGASKET |

Dimensions:
mm
[inches]

**HAMMOND
MANUFACTURING®**

1550P

www.hammondmfg.com